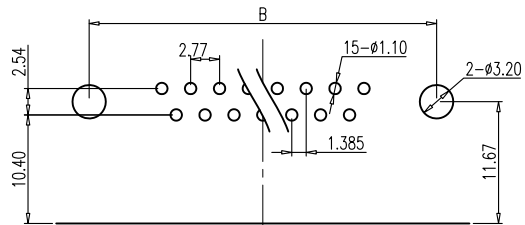
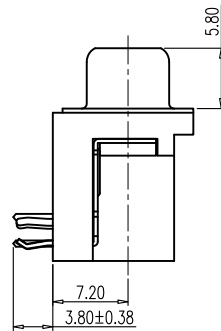
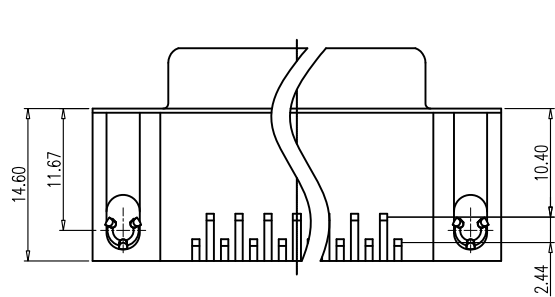
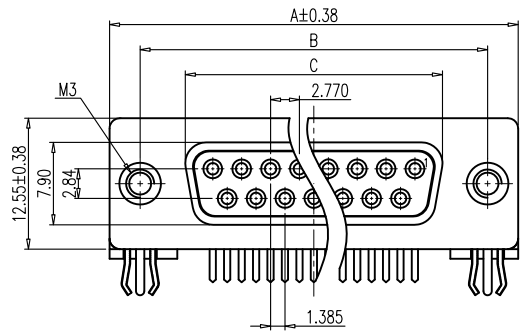


This document is the property of Amphenol Corporation and is delivered on the express condition that it is not to be disclosed, reproduced or used, in whole or in part, for manufacture or sale by anyone other than Amphenol Corporation without its prior consent, & that no right is granted to disclose or to use any information in this document.

Customer drawing



P.C.B EDGE
RECOMMENDED P.C.B LAYOUT
TOLERANCE ±0.05

| DIM.S | SHELL | A | B | C |
|-------|-------|-------|-------|-------|
| 09 | | 30.81 | 24.99 | 16.33 |
| 15 | | 39.19 | 33.32 | 24.66 |
| 25 | | 53.04 | 47.04 | 38.38 |
| 37 | | 69.32 | 63.50 | 54.84 |



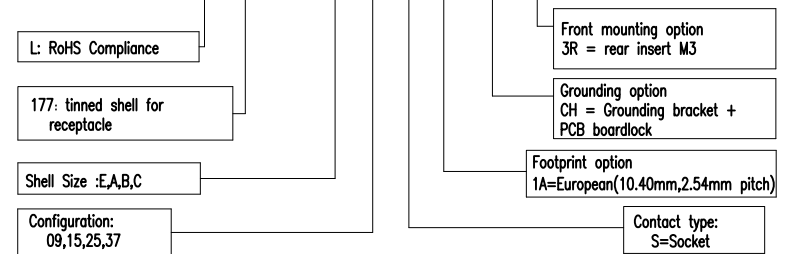
| REVISIONS | | | | |
|-----------|------|-----------------------|----------|----------|
| SYM | ECN | DESCRIPTION | DATE | APPROVED |
| 1 | HK-- | First Release Drawing | 12/06/13 | IP |

D-SUB TECHNICAL DATA

SHELL : SPCC, 80u" min nickel over 50u" copper
 BODY : PBT, UL 94V-0, Color:Black.
 CONTACTS : Copper Alloy
 15u" Gold over 50u" min nickel on mating area.
 100u" min tin over 50u" min nickel on solder area.
 BOARDLOCK: Copper Alloy, Tin plated.
 RIVET : Copper Alloy, Nickel plated.
 ELECTRICAL : Voltage rating 250 V Rms
 Current rating 3A.
 Withstanding Voltage >1000 V Rms
 Insulation resistance >1000 M Ohms
 Contact resistance 25 mOhms max.
 MARKING : Amphenol...(Series No.)
 Commercial reference
 Manufacturing date

PRODUCT CODE

L 177 SD X XX S 1A CH 3R



| UNLESS OTHERWISE SPECIFIED TOLERANCES | | APPROVAL | | DATE |
|---------------------------------------|--------|----------|-------|----------|
| U.S. | METRIC | DRAWN | FILED | 12/06/13 |
| .X +/- | 0.50 | | | |
| .XX +/- | 0.30 | | | |
| .XXX +/- | 0.20 | | | |
| FRACTIONS +/- | | | | |
| ANGLES +/- | 5° | | | |
| FOR MATERIALS AND FINISHES SEE NOTES | | | | |
| REMOVE SHARP EDGES | | | | |
| DIMENSIONS | | | | |
| U.S. INCHES | | | | |
| METRIC MM | | | | |
| ANGLE OF PROJECTION | | | | |
| DRAWING FILE : | | | | |

| | |
|---------------------------------------|--------------------|
| Amphenol | |
| Amphenol East Asia Limited | |
| TITLE | |
| Stamped and formed contact, SD series | |
| SIZE | DRAWING NO. |
| A4 | C L177SDXXXS1ACH3R |
| SCALE | NONE |
| SHEET | 1 OF 1 |
| REV. | 1 |