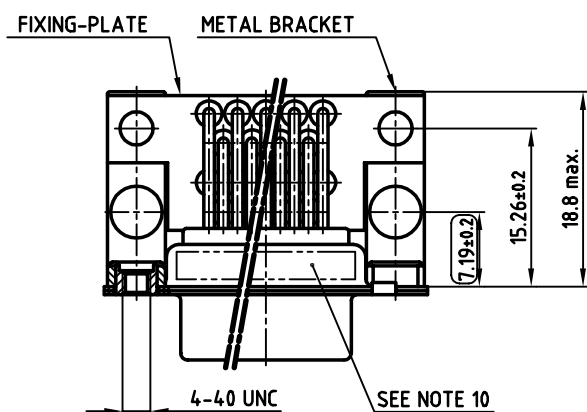
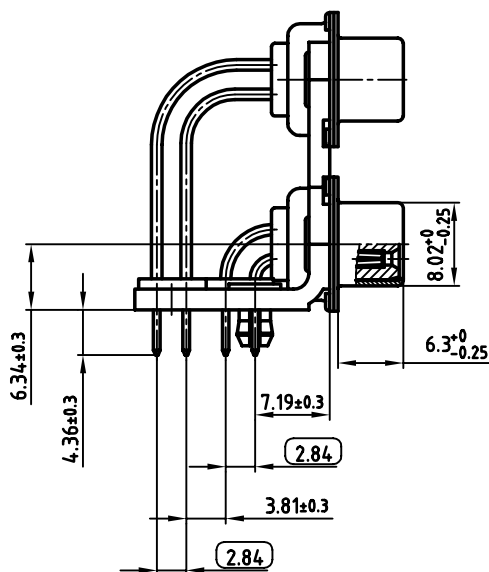
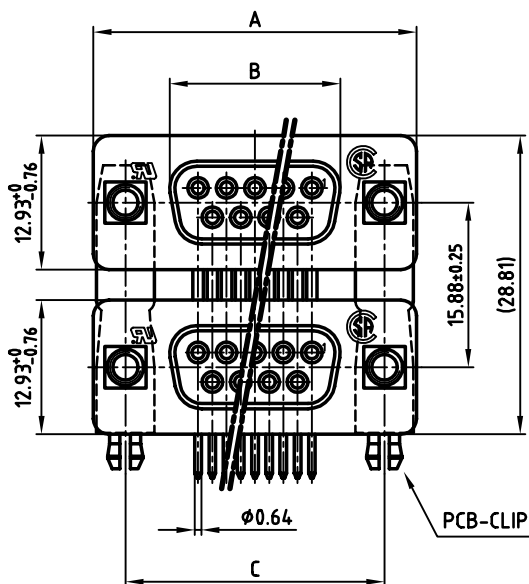


used for: D-SUB Dual Port

POS.	A -0.76	B -0.25	C	PART-NO.
2x 9	31.19	16.46	25.00 <sup>+0.12</sup> <sub>-0.13</sub>	<b>164A20409X</b>
2x15	39.52	24.79	33.30 <sup>+0.15</sup> <sub>-0.1</sub>	<b>164A20419X</b>
2x25	53.42	38.50	47.04 <sup>+0.13</sup>	<b>164A20429X</b>
2x37	69.70	54.96	63.50 <sup>+0.13</sup>	<b>164A20439X</b>



**NOTES:**

- METALSHELLS: STEEL; min. 320µ" TIN
- INSULATORS: PBT GF UL 94 V-0, BLACK
- CONTACTS: COPPER ALLOY  
PLATING: 8µ" HARD GOLD OVER min. 50µ" NICKEL
- METAL BRACKET: STEEL; min. 320µ" TIN over 80µ" NICKEL
- THREADED INSERT: COPPER ALLOY; min. 200µ" TIN over 80µ" NICKEL
- FIXING-PLATE: PBT GF UL 94 V-0, BLACK
- PCB-SNAP: COPPER ALLOY; min. 200µ" TIN over 80µ" NICKEL  
PCB-HOLE:  $\phi 3.1 \pm 0.1$ ; PCB THICKNESS 1.6mm
- P.C.B. HOLE DRILLINGS ON SHEET 2 + 3
- MAXIMUM TORQUE VALUE FOR THREAD: 6" LBS
- CONNECTOR IS PART MARKED: PART-NO. CONEC Y/WW
- = CHECK DIMENSION

Directive 2002/95 EC  
RoHS  
Compliant

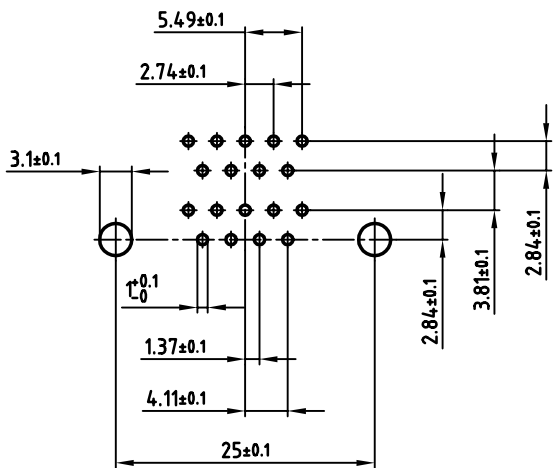
APPROVAL # FREIGABE # DEBLOCAGE # AUTORIZACION # APPROVAL	
CUSTOMER APPROVAL DATE:	
NAME:	TITLE:
COMPANY NAME:	
APPROVAL # FREIGABE # DEBLOCAGE # AUTORIZACION # APPROVAL	

THIS DRAWING MAY NOT BE COPIED OR REPRODUCED IN ANY WAY, AND MAY NOT BE PASSED ON TO A THIRD PARTY, WITHOUT WRITTEN PERMISSION. OWNERSHIP AND COPYRIGHT OF CONEC GmbH DO NOT ALTER CAD DRAWING BY HAND

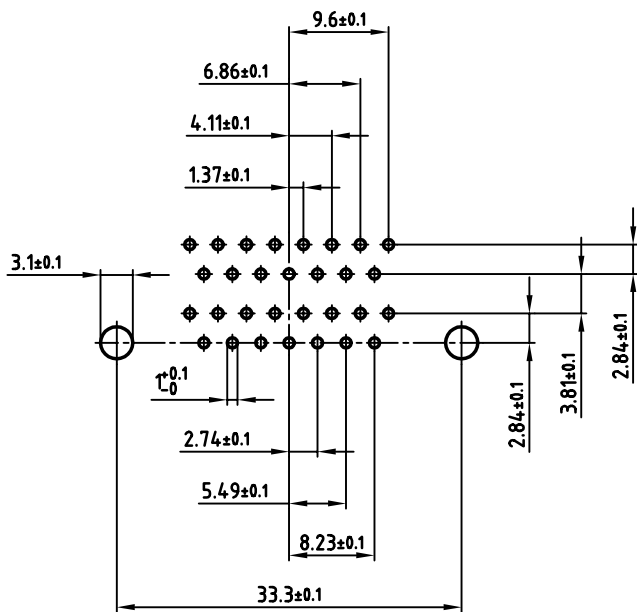
rev.	description	date	name

tolerance	dim. in mm	scale: 2:1
material:	SEE NOTES	material:
2003 date	name	title:
drawn 22.04.	Parei	<b>DUAL PORT 15.88mm</b>
appd. 22.04.	Kühle	FEMALE / FEMALE 2x9pos. - 2x37pos. with threaded insert and 2 x PCB clip
norm DIN 41652	d-old	dwg no: AutoCAD 2000 DIN-A
<b>CONEC</b>		16K1A945
part no: SEE TABLE		3 sh:1/3

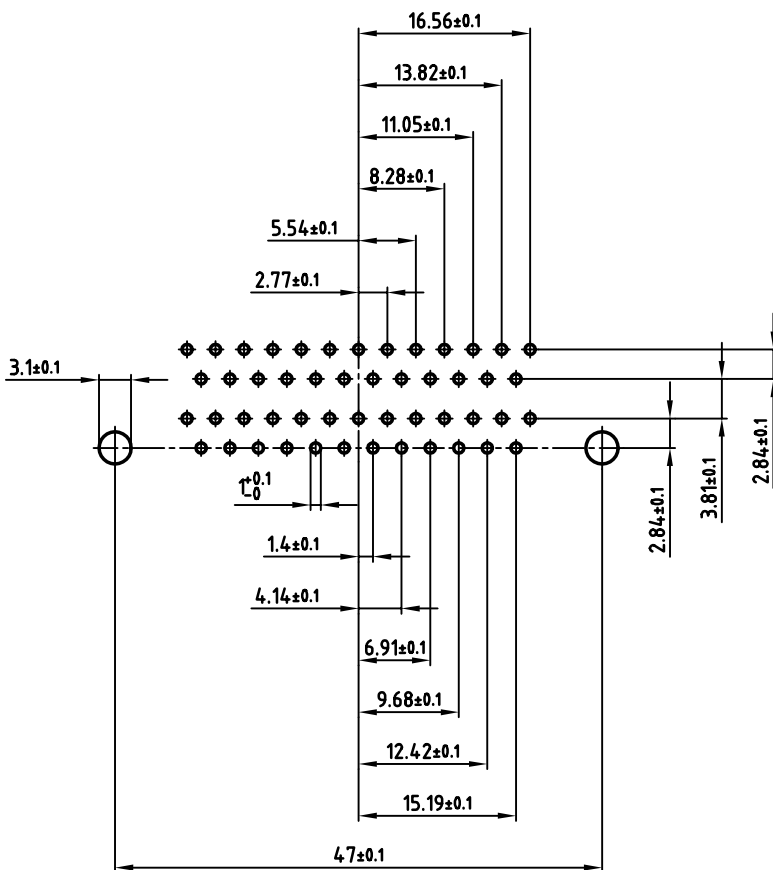
used for: D-SUB Dual Port



2x9 pos.



2x15 pos.



2x25 pos.

APPROVAL # FREIGABE # DEBLOCAGE # AUTORIZACION # APPROVAL

CUSTOMER APPROVAL DATE:

NAME: TITLE:

COMPANY NAME:

APPROVAL # FREIGABE # DEBLOCAGE # AUTORIZACION # APPROVAL

THIS DRAWING MAY NOT BE COPIED OR REPRODUCED IN ANY WAY, AND MAY NOT BE PASSED ON TO A THIRD PARTY, WITHOUT WRITTEN PERMISSION. OWNERSHIP AND COPYRIGHT OF CONEC Gmbh DO NOT ALTER CAD DRAWING BY HAND

rev.	description	date	name

tolerance	dim. in mm	
2003		
drawn	date	name
appd.	22.04.	Parei
norm	DIN 41652	
d-old		

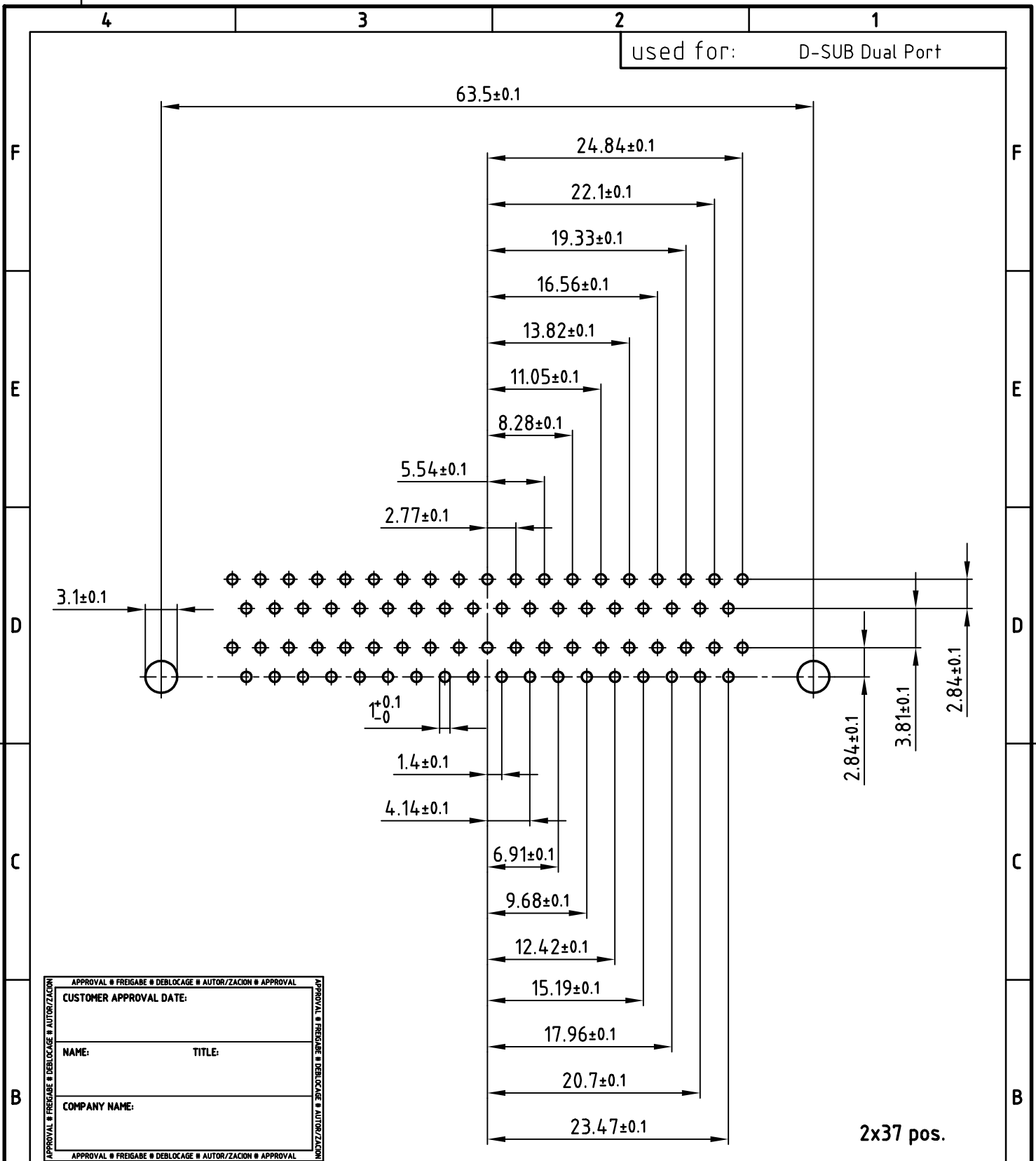
scale: 2:1

material: SEE SHEET 1

title: P.C.B. HOLE DRILLINGS  
DUAL PORT 15.88mm FEMALE / FEMALE  
with threaded insert and 2 x PCB clip

dwg no: AutoCAD 2000 DIN-A  
16K1A945 3 sh:2/3

part no: SEE SHEET 1



APPROVAL # FREIGABE # DEBLOCAGE # AUTORIZACION # APPROVAL	
CUSTOMER APPROVAL DATE:	
NAME:	TITLE:
COMPANY NAME:	
APPROVAL # FREIGABE # DEBLOCAGE # AUTORIZACION # APPROVAL	

THIS DRAWING MAY NOT BE COPIED OR REPRODUCED IN ANY WAY, AND MAY NOT BE PASSED ON TO A THIRD PARTY WITHOUT WRITTEN PERMISSION.  
 OWNERSHIP AND COPYRIGHT OF CONEC GmbH  
 DO NOT ALTER CAD DRAWING BY HAND

tolerance			dim. in mm		
2003	date	name	scale: 2:1		
drawn	22.04.	Parei	material: SEE SHEET 1		
appd.	22.04.	Kühle	title: P.C.B. HOLE DRILLINGS		
norm	DIN 41652		DUAL PORT 15.88mm FEMALE / FEMALE with threaded insert and 2 x PCB clip		
d-old			dwg no: AutoCAD 2000		
			DIN-A 4		
			sh:3/3		
rev.	description	date	name	part no: SEE SHEET 1	

A

A

4

3

2

1