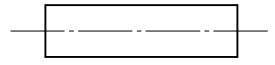
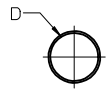


	12		11		10		9		8		7		6		5		4		3		2		1	
	BLACK		WHITE		RED		BLUE		CLEAR		YELLOW		MIN		MAX		RECOVERED		LENGTH					
	MATERIAL NUMBER	ENGINEERING NUMBER	MATERIAL NUMBER	ENGINEERING NUMBER	MATERIAL NUMBER	ENGINEERING NUMBER	MATERIAL NUMBER	ENGINEERING NUMBER	MATERIAL NUMBER	ENGINEERING NUMBER	MATERIAL NUMBER	ENGINEERING NUMBER	MATERIAL NUMBER	ENGINEERING NUMBER	EXPANDED ID "D"	RECOVERED ID	WALL THK REF	FEET/METERS						
J	192670015	PF-3/64-1BK	192670016	PF-3/64-1WT	192670017	PF-3/64-1RD	192670018	PF-3/64-1BL	192670019	PF-3/64-1CL	192670020	PF-3/64-1YL	.046/1.17	.023/0.58	.018/0.46									
	192670045	PF-1/16-1BK	192670046	PF-1/16-1WT	192670047	PF-1/16-1RD	192670048	PF-1/16-1BL	192670049	PF-1/16-1CL	192670050	PF-1/16-1YL	.063/1.60	.031/0.79	.018/0.46									
	192670075	PF-3/32-1BK	192670076	PF-3/32-1WT	192670077	PF-3/32-1RD	192670078	PF-3/32-1BL	192670079	PF-3/32-1CL	192670080	PF-3/32-1YL	.093/2.36	.046/1.17	.020/0.51									
	192670105	PF-1/8-1BK	192670106	PF-1/8-1WT	192670107	PF-1/8-1RD	192670108	PF-1/8-1BL	192670109	PF-1/8-1CL	192670110	PF-1/8-1YL	.125/3.18	.062/1.57	.020/0.51									
	192670135	PF-3/16-1BK	192670136	PF-3/16-1WT	192670137	PF-3/16-1RD	192670138	PF-3/16-1BL	192670139	PF-3/16-1CL	192670140	PF-3/16-1YL	.187/4.75	.093/2.36	.020/0.51									
	192670165	PF-1/4-1BK	192670166	PF-1/4-1WT	192670167	PF-1/4-1RD	192670168	PF-1/4-1BL	192670169	PF-1/4-1CL	192670170	PF-1/4-1YL	.250/6.35	.125/3.18	.025/0.64									
I	192670195	PF-3/8-1BK	192670196	PF-3/8-1WT	192670197	PF-3/8-1RD	192670198	PF-3/8-1BL	192670199	PF-3/8-1CL	192670200	PF-3/8-1YL	.375/9.53	.187/4.75	.025/0.64							4.0/1.2		
	192670225	PF-1/2-1BK	192670226	PF-1/2-1WT	192670227	PF-1/2-1RD	192670228	PF-1/2-1BL	192670229	PF-1/2-1CL	192670230	PF-1/2-1YL	.500/12.70	.250/6.35	.025/0.64									
	192670255	PF-3/4-1BK	192670256	PF-3/4-1WT	192670257	PF-3/4-1RD	192670258	PF-3/4-1BL	192670259	PF-3/4-1CL	192670260	PF-3/4-1YL	.750/19.05	.375/9.53	.030/0.76									
	192670285	PF-1-1BK	192670286	PF-1-1WT	192670287	PF-1-1RD	192670288	PF-1-1BL	192670289	PF-1-1CL	192670290	PF-1-1YL	1.000/25.40	.500/12.70	.035/0.89									
	192670315	PF-1-1/2-1BK	192670316	PF-1-1/2-1WT	192670317	PF-1-1/2-1RD	192670318	PF-1-1/2-1BL	192670319	PF-1-1/2-1CL	192670320	PF-1-1/2-1YL	1.500/38.10	.750/19.05	.040/1.02									
	192670345	PF-2-1BK	192670346	PF-2-1WT	192670347	PF-2-1RD	192670348	PF-2-1BL	192670349	PF-2-1CL	192670350	PF-2-1YL	2.000/50.80	1.000/25.40	.045/1.14									
	192670375	PF-3-1BK	192670376	PF-3-1WT	192670377	PF-3-1RD	192670378	PF-3-1BL	192670379	PF-3-1CL	192670380	PF-3-1YL	3.000/76.20	1.500/38.10	.050/1.27									
H	192670405	PF-4-1BK							192670409	PF-3-1CL			4.000/101.60	2.000/50.80	.055/1.40									
	192670033	PF-3/64-4BK	192670034	PF-3/64/4WT	192670035	PF-3/64-4RD	192670036	PF-3/64-4BL	192670037	PF-3/64-4CL	192670038	PF-3/64-4YL	.046/1.17	.023/0.58	.018/0.46									
	192670063	PF-1/16-4BK	192670064	PF-1/16-4WT	192670065	PF-1/16-4RD	192670066	PF-1/16-4BL	192670067	PF-1/16-4CL	192670068	PF-1/16-4YL	.063/1.60	.031/0.79	.018/0.46							1000/304.8		
	192670093	PF-3/32-4BK	192670094	PF-3/32-4WT	192670095	PF-3/32-4RD	192670096	PF-3/32-4BL	192670097	PF-3/32-4CL	192670098	PF-3/32-4YL	.093/2.36	.046/1.17	.020/0.51							SPOOL		
	192670123	PF-1/8-4BK	192670124	PF-1/8-4WT	192670125	PF-1/8-4RD	192670126	PF-1/8-4BL	192670127	PF-1/8-4CL	192670128	PF-1/8-4YL	.125/3.18	.062/1.57	.020/0.51									
	192670153	PF-3/16-4BK	192670154	PF-3/16-4WT	192670155	PF-3/16-4RD	192670156	PF-3/16-4BL	192670157	PF-3/16-4CL	192670158	PF-3/16-4YL	.187/4.75	.093/2.36	.020/0.51									
G	192670183	PF-1/4-4BK	192670184	PF-1/4-4WT	192670185	PF-1/4-4RD	192670186	PF-1/4-4BL	192670187	PF-1/4-4CL	192670188	PF-1/4-4YL	.250/6.35	.125/3.18	.025/0.64							500/152.4		
	192670213	PF-3/8-4BK	192670214	PF-3/8-4WT	192670215	PF-3/8-4RD	192670216	PF-3/8-4BL	192670217	PF-3/8-4CL	192670218	PF-3/8-4YL	.375/9.53	.187/4.75	.025/0.64							SPOOL		
	192670243	PF-1/2-4BK	192670244	PF-1/2-4WT	192670245	PF-1/2-4RD	192670246	PF-1/2-4BL	192670247	PF-1/2-4CL	192670248	PF-1/2-4YL	.500/12.70	.250/6.35	.025/0.64							200/60.96 SPOOL		
	192670273	PF-3/4-4BK	192670274	PF-3/4-4WT	192670275	PF-3/4-4RD	192670276	PF-3/4-4BL	192670277	PF-3/4-4CL	192670278	PF-3/4-4YL	.750/19.05	.375/9.53	.030/0.76									
	192670303	PF-1-4BK	192670304	PF-1-4WT	192670305	PF-1-4RD	192670306	PF-1-4BL	192670307	PF-1-4CL	192670308	PF-1-4YL	1.000/25.40	.500/12.70	.035/0.89							100/30.5		
	192670333	PF-1-1/2-4BK	192670334	PF-1-1/2-4WT	192670335	PF-1-1/2-4RD	192670336	PF-1-1/2-4BL	192670337	PF-1-1/2-4CL	192670338	PF-1-1/2-4YL	1.500/38.10	.750/19.05	.040/1.02							SPOOL		
F	192670363	PF-2-4BK	192670364	PF-2-4WT	192670365	PF-2-4RD	192670366	PF-2-4BL	192670367	PF-2-4CL	192670368	PF-2-4YL	2.000/50.80	1.000/25.40	.045/1.14									
	192670393	PF-3-4BK	192670394	PF-3-4WT	192670395	PF-3-4RD	192670396	PF-3-4BL	192670397	PF-3-4CL	192670398	PF-3-4YL	3.000/76.20	1.500/38.10	.050/1.27							50/15.2 SPOOL		
	192670423	PF-4-4BK							192670427	PF-4-4CL			4.000/101.60	2.000/50.80	.055/1.40									
	192670039	PF-3/64-5BK	192670040	PF-3/64-5WT	192670041	PF-3/64-5RD	192670042	PF-3/64-5BL	192670043	PF-3/64-5CL	192670044	PF-3/64-5YL	.046/1.17	.023/0.58	.018/0.46									
	192670069	PF-1/16-5BK	192670070	PF-1/16-5WT	192670071	PF-1/16-5RD	192670072	PF-1/16-5BL	192670073	PF-1/16-5CL	192670074	PF-1/16-5YL	.063/1.60	.031/0.79	.018/0.46									
	192670099	PF-3/32-5BK	192670100	PF-3/32-5WT	192670101	PF-3/32-5RD	192670102	PF-3/32-5BL	192670103	PF-3/32-5CL	192670104	PF-3/32-5YL	.093/2.36	.046/1.17	.020/0.51									
	192670129	PF-1/8-5BK	192670130	PF-1/8-5WT	192670131	PF-1/8-5RD	192670132	PF-1/8-5BL	192670133	PF-1/8-5CL	192670134	PF-1/8-5YL	.125/3.18	.062/1.57	.020/0.51							100/30.4		
E	192670159	PF-3/16-5BK	192670160	PF-3/16-5WT	192670161	PF-3/16-5RD	192670162	PF-3/16-5BL	192670163	PF-3/16-5CL	192670164	PF-3/16-5YL	.187/4.75	.093/2.36	.020/0.51							SPOOL		
	192670189	PF-1/4-5BK	192670190	PF-1/4-5WT	192670191	PF-1/4-5RD	192670192	PF-1/4-5BL	192670193	PF-1/4-5CL	192670194	PF-1/4-5YL	.250/6.35	.125/3.18	.025/0.64									
	192670219	PF-3/8-5BK	192670220	PF-3/8-5WT	192670221	PF-3/8-5RD	192670222	PF-3/8-5BL	192670223	PF-3/8-5CL	192670224	PF-3/8-5YL	.375/9.53	.187/4.75	.025/0.64									
	192670249	PF-1/2-5BK	192670250	PF-1/2-5WT	192670251	PF-1/2-5RD	192670252	PF-1/2-5BL	192670253	PF-1/2-5CL	192670254	PF-1/2-5YL	.500/12.70	.250/6.35	.025/0.64									

SALES DRAWING



NOTES:

- MATERIAL: POLYOLEFIN
- OTHER CUT LENGTHS ARE AVAILABLE.
- PARTS ARE RoHS COMPLIANT.

CHANGED TITLE EC NO: IPGZ2013-0982 DRWINGRO JASO1 2013/01/10 CHKD: JACNEIL 2013/01/10 APPR: JACNEIL 2013/01/31	DESCRIPTION REV: B1	QUALITY SYMBOLS ▽=0 ▽=0	GENERAL TOLERANCES (UNLESS SPECIFIED) <table border="1"> <tr> <th></th> <th>mm</th> <th>INCH</th> </tr> <tr> <td>4 PLACES</td> <td>± ---</td> <td>± ---</td> </tr> <tr> <td>3 PLACES</td> <td>± ---</td> <td>± ---</td> </tr> <tr> <td>2 PLACES</td> <td>± ---</td> <td>± ---</td> </tr> <tr> <td>1 PLACE</td> <td>± ---</td> <td>± ---</td> </tr> </table>		mm	INCH	4 PLACES	± ---	± ---	3 PLACES	± ---	± ---	2 PLACES	± ---	± ---	1 PLACE	± ---	± ---	DIMENSION STYLE IN/MM	SCALE 1:1	DESIGN UNITS INCH	THIRD ANGLE PROJECTION
			mm	INCH																		
		4 PLACES	± ---	± ---																		
		3 PLACES	± ---	± ---																		
2 PLACES	± ---	± ---																				
1 PLACE	± ---	± ---																				
DRAWN BY BENDERLE DATE 2004/08/04	CHECKED BY R DEROSS DATE 2004/08/04	APPROVED BY R DEROSS DATE 2004/08/04	TITLE POLYOLEFIN HEAT SHRINK TUBING 19267 SERIES	MATERIAL NO. SEE CHART	DOCUMENT NO. SD-19267-001	SHEET NO. 1 OF 1																
DRAFT WHERE APPLICABLE MUST REMAIN WITHIN DIMENSIONS			THIS DRAWING CONTAINS INFORMATION THAT IS PROPRIETARY TO MOLEX INCORPORATED AND SHOULD NOT BE USED WITHOUT WRITTEN PERMISSION																			