

SMA JACK

BODY, CRIMP TUBE, JAM NUT: BRASS
PLATED NICKEL

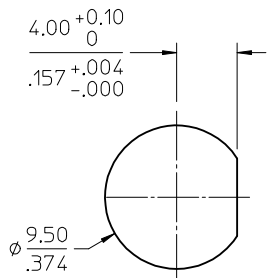
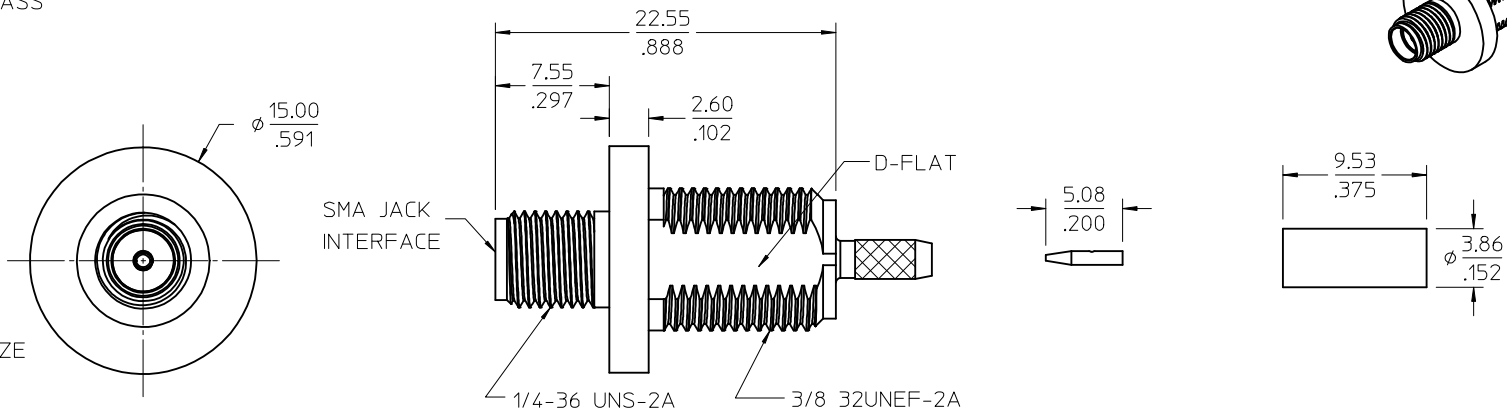
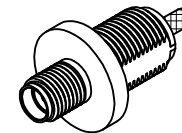
PIN CONTACT: BRASS
PLATED GOLD

CONTACT: BERYLLIUM COPPER
PLATED GOLD

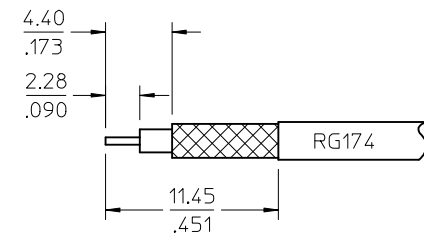
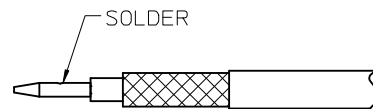
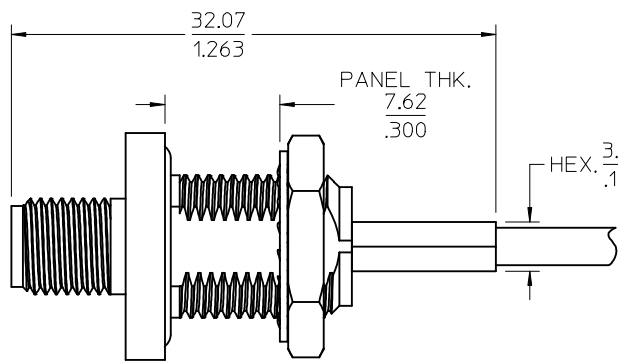
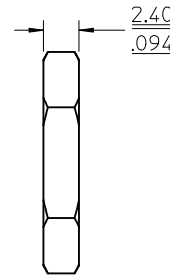
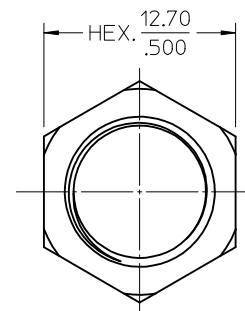
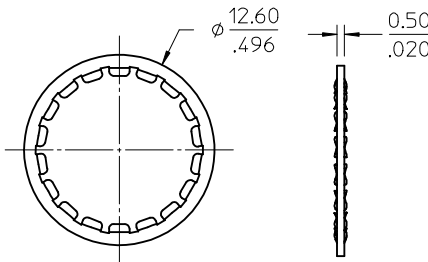
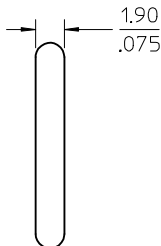
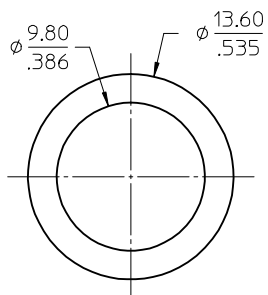
INSULATOR: TEFLON

LOCK WASHER: PHOSPHOR BRONZE
PLATED NICKEL

GASKET: SILICONE RUBBER



RECOMMENDED
PANEL CUTOUT



RECOMMENDED CABLE STRIPING DIM.

PART # 73251-5810

CHG: ORING, JAM NUT
i. THREAD DIM. 3/8
32UNEF-2A WAS M9
BODY OD Ø15 WAS 12
PER RFP13-E023
EC NO: URF2013-0113
2012/06/05
DRWN: CWE102
CHKD:
APPR: MHUANG
2012/09/06

REV	DESCRIPTION
0	QUALITY SYMBOLS
1	QUALITY SYMBOLS
2	QUALITY SYMBOLS

GENERAL TOLERANCES (UNLESS SPECIFIED)	
mm	INCH
4 PLACES ± .005	± .0005
3 PLACES ± .002	± .0002
2 PLACES ± .001	± .0001
1 PLACE ± .0005	± .00005
0 PLACE ± .0002	± .00002
ANGULAR ± 2°	
DRAFT WHERE APPLICABLE MUST REMAIN WITHIN DIMENSIONS	

DIMENSION STYLE	
MM/IN	
DRAWN BY	DATE
CWE102	2012/04/11
CHECKED BY	DATE
KERRIE	2012/04/11
APPROVED BY	DATE
MHUANG	2012/05/11
MATERIAL NO.	
732515810	

SCALE	DESIGN UNITS	THIRD ANGLE PROJECTION
	METRIC	
TITLE		
SMA JACK BULKHEAD 50 OHMS, IP65, FOR RG174 SMA-J		
molex		
DOCUMENT NO.	SHEET NO.	
SD-73251-581	1 OF 1	
THIS DRAWING CONTAINS INFORMATION THAT IS PROPRIETARY TO MOLEX INCORPORATED AND SHOULD NOT BE USED WITHOUT WRITTEN PERMISSION		