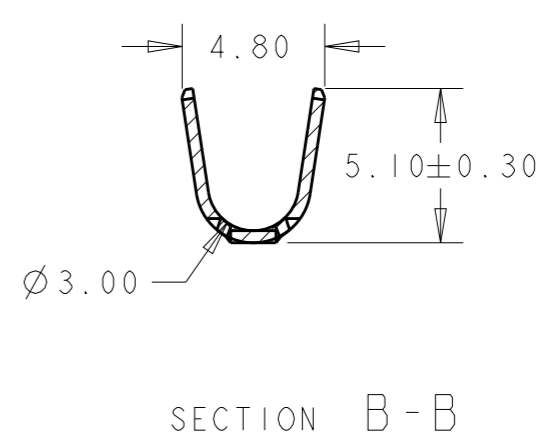
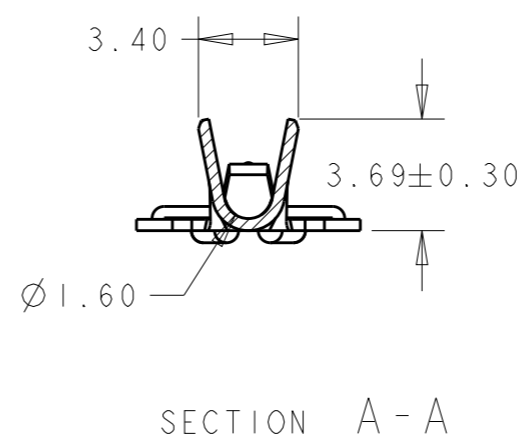
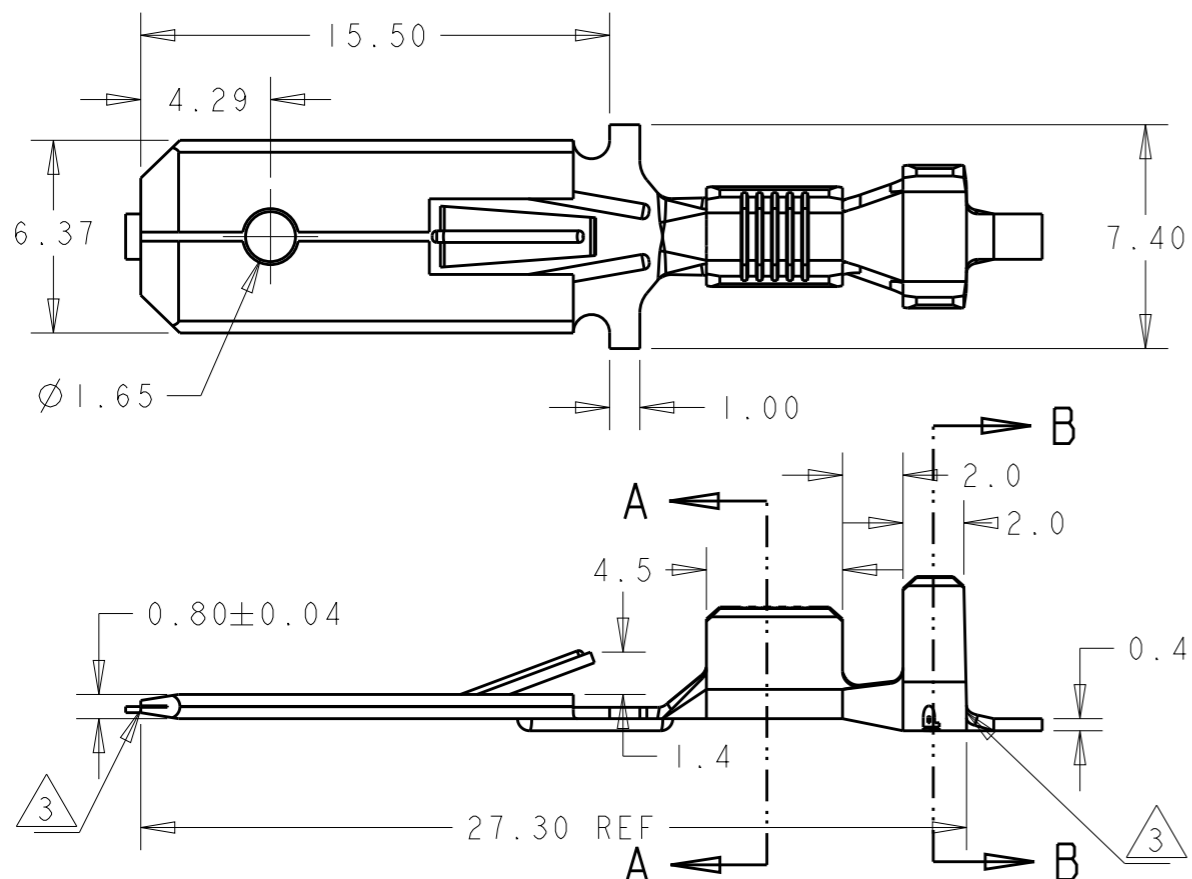



THIS DRAWING IS UNPUBLISHED. RELEASED FOR PUBLICATION 20  
 © COPYRIGHT 20 BY - ALL RIGHTS RESERVED.

REVISIONS					
P	LTR	DESCRIPTION	DATE	DWN	APVD
	A	INITIAL RELEASE	18MAY2018	JH	PKS
	AI	REVISED PER ECR-19-015041	04NOV2019	PC	MB



- NOTES: .
1. WIRE BARREL CRIMP, "F Crimp":  
 CRIMP WIDTH 2.54mm (.100 )  
 CRIMP HEIGHT (±0.05mm)=(TOTAL CMA+8000)\*25.4/171100
  2. INSULATION BARREL CRIMP: 4.06mm (.160 ) "OVERLAP"
  - 3 0.5 MAX CUT OFF TABS
  4. WIRE RANGE: MAGNET WIRE CMA 1500-5200  
 WIRE DIAMETER CANNOT BE LESS THAN 26AWG[0.40mm]  
 FOR SINGLE WIRE, THE BARE WIRE DIAMETER IS FROM 0.90mm TO 1.60mm.
  5. INSULATION RANGE: Ø2.2 - Ø3.3mm
  6. NO VISIBLE OIL RESIDUE
  7. REELED WITH INTERLEAVE PAPER

2309591-1 | PN

THIS DRAWING IS A CONTROLLED DOCUMENT.		DWN JUSTIN HUANG 15SEP2016	 TE Connectivity													
DIMENSIONS: mm		CHK TIM DING 15SEP2016														
TOLERANCES UNLESS OTHERWISE SPECIFIED:		APVD SENTHIL KUMAR 15SEP2016	NAME .250 SERIES FASTIN FASTON TAB - AMPLIVAR													
<table border="1"> <tr><td>0 PLC</td><td>±0.5</td></tr> <tr><td>1 PLC</td><td>±0.5</td></tr> <tr><td>2 PLC</td><td>±0.5</td></tr> <tr><td>3 PLC</td><td>±0.5</td></tr> <tr><td>4 PLC</td><td>±0.5</td></tr> <tr><td>ANGLES</td><td>±</td></tr> </table>		0 PLC	±0.5	1 PLC	±0.5	2 PLC	±0.5	3 PLC	±0.5	4 PLC	±0.5	ANGLES	±	PRODUCT SPEC 108-2086	SIZE A3	
0 PLC	±0.5															
1 PLC	±0.5															
2 PLC	±0.5															
3 PLC	±0.5															
4 PLC	±0.5															
ANGLES	±															
MATERIAL BRASS		APPLICATION SPEC 114-18022	CAGE CODE 00779	DRAWING NO C-2309591												
FINISH UNPLATED		WEIGHT -	RESTRICTED TO -													
-		CUSTOMER DRAWING		SCALE 4:1												
		SHEET 1 OF 1		REV AI												