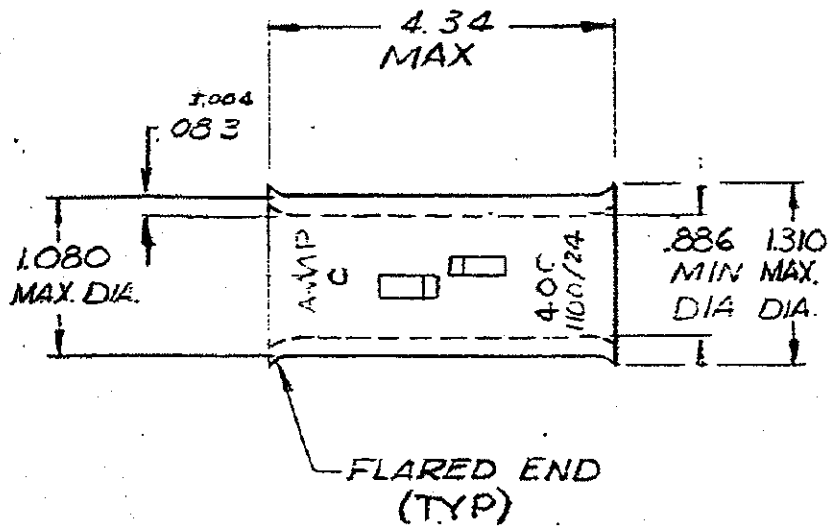


DRAWING MADE IN AMERICAN PROJECTION

LJC PRINT DIST  
6: 86

© 1972 BY AMP INCORPORATED  
RIGHTS RESERVED. AMP NOT TO BE  
COVERED BY PATENTS NOT TO BE  
REPRODUCED OR PUBLISHED  
UNPUBLISHED COPY NOT TO BE  
WITHOUT WRITTEN PERMISSION  
OF AMP INCORPORATED

| REVISIONS |                          |                    |          |
|-----------|--------------------------|--------------------|----------|
| TR        | DESCRIPTION              | DATE               | APPROVED |
| 0         | NPS 71-0920              | 8/6 2-10-72        | JMC      |
| A         | ADDED RE STAMPING        | P-7366 LB 12/17/74 | WJW      |
| B         | DELETE PER G-2173        | ST 8/18/78         | PMF      |
| C         | REACTIVATE PER G-5057    | 2/4/89             | PMF/WJV  |
| D         | REVISED PER Q63A-0637-01 | 1/10/02            | JL       |



UNLESS OTHERWISE SPECIFIED DIMENSIONS ARE IN INCHES - TOLERANCES UNLESS OTHERWISE SPECIFIED: DECIMALS ±.002 ANGLES ±5°

MATERIAL: ANNEALED COPPER (ASTM-B-75)  
FINISH: TIN PLATE (MIL-T-10727)

CONTRACT NO.                     

DR. Henry Bader 2-14-72

CRK. Am Engineering 2-14-72

APPL. Abel 2-14-72

REL. Engineering 2-14-72

DSGN APPL.                     

OTHER APPD                     

**AMP** AMP INCORPORATED HARRISBURG, PENNSYLVANIA

NAME: **WIRE SPLICE**  
**AMPPOWER-BUTT**  
**WIRE SIZE: 400 MCM**

|      |                |        |
|------|----------------|--------|
| SIZE | DOCS IDENT NO. | NUMBER |
| A    | 00779          | 53088  |

SCALE: NTS SHEET 1 OF 1