

4

3

2

1

THIS DRAWING IS UNPUBLISHED.

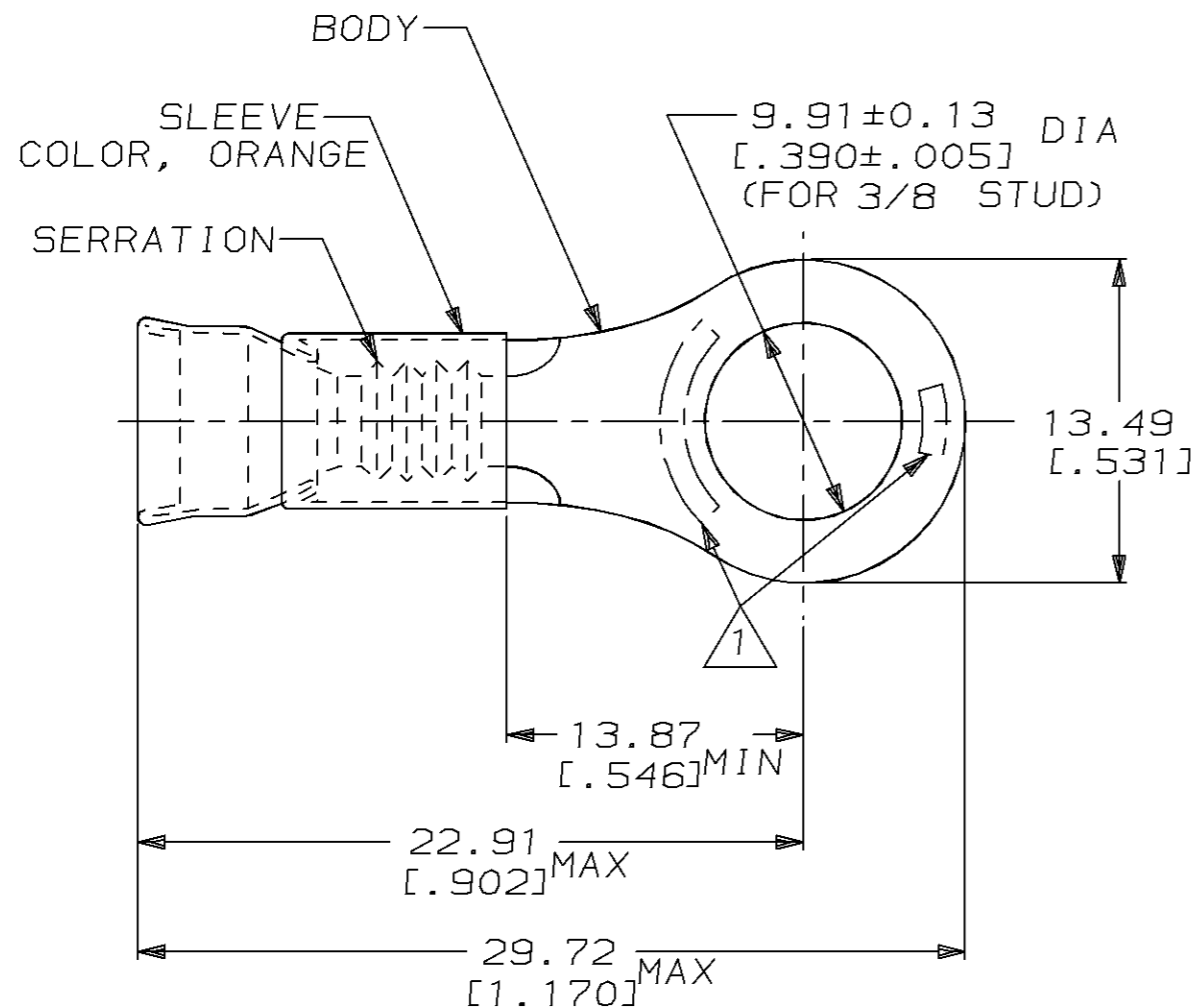
RELEASED FOR PUBLICATION

,19

© COPYRIGHT 19

BY AMP INCORPORATED. ALL RIGHTS RESERVED.

LOC	DIST	REVISIONS			
P	LTR	DESCRIPTION	DATE	DWN	APVD
G	14	B	REDRAWN PER 0720-0377-94	10OCT94	LO ME



△ STAMP AMP 16-14 2 1/2-4 APPROX AS SHOWN

- WIRE INSUL DIA, 3.05-4.32 [.120-.170]
- TONGUE MATL THK, 0.79±0.05 [.031±.002]

1000	LOOSE PIECE	322344
QTY	PACKAGE TYPE	PART NO

AMP INCORPORATED
CUSTOMER SERVICE SYSTEM

MAX RECOMMENDED OPERATING
TEMPERATURE:
649°C [1200°F]

THIS DRAWING IS A CONTROLLED DOCUMENT FOR AMP INCORPORATED.
IT IS SUBJECT TO CHANGE AND THE CONTROLLING ENGINEERING
ORGANIZATION SHOULD BE CONTACTED FOR THE LATEST REVISION.

DWN L OLMEDA 10OCT94

CHK M ELLIS 10OCT94

APVD S BORTNER 10OCT94

PRODUCT SPEC

APPLICATION SPEC

WEIGHT -

CUSTOMER DRAWING

AMP AMP Incorporated
Harrisburg, PA 17105-3608

NAME TERMINAL, RING TONGUE,
STRATOTHERM, DIAMOND GRIP,
WIRE SIZE, 16-14 AWG

SIZE A3 CAGE CODE 00779 DRAWING NO C-322344

SCALE 4:1 SHEET 1 OF 1 REV B

FOR ADDITIONAL
PRODUCT INFORMATION OR
COPIES OF DRAWINGS
AND TECHNICAL DOCUMENTS

PRODUCT INFORMATION CENTER
1-800-522-6752

FOR APPLICATION
TOOLING INFORMATION

TOOLING ASSISTANCE CENTER
1-800-722-1111

FOR ORDER ENTRY

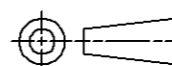
1-800-526-5142

VOLTAGE RATING:
-

CIRCULAR MIL AREA:
1.04mm²-2.62mm² [2050-5180]

STRANDED WIRE

DIMENSIONS:
mm [in]



TOLERANCES UNLESS
OTHERWISE SPECIFIED:

0 PLC ±-
1 PLC ±-
2 PLC ±0.20 [.008]
3 PLC ±-
4 PLC ±-
ANGLES ±-

MATERIAL
BODY, NI PER ASTM B162
SLEEVE, NI SIL PER
ASTM B122

FINISH -