

NO.	QUANTITY	SUPPLIER	DESCRIPTION	PART NO.	SEE NOTE
▽	1	NO PREFERRED SUPPLIER	14 CORE CABLE	99830-004	3, 4
▽	1	MOLEX	MOLDED ON GRONMET	99830-001	3
▽	1	MOLEX	LOWER SHELL	91200-0001	
▽	1	MOLEX	UPPER SHELL	91200-0002	2
▽	1	MOLEX	MOBILE PHONE CONTACT UNIT	9140-5001	L 2
▽	2	NO PREFERRED SUPPLIER	SELF TAPPING SCREWS	90640-0021	4
▽	1	NO PREFERRED SUPPLIER	PCB ASSEMBLY TEST CABLE	91254-0003	3
▽	1	NO PREFERRED SUPPLIER	HARNESS	9612-0001	5
▽	1	MOLEX	LATCH ACTUATOR	91200-0004	3

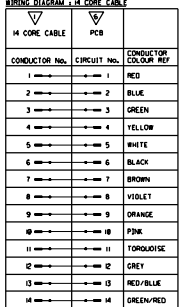
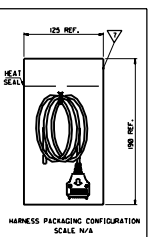


TABLE TYPE: PCB CONDUCTOR WIRE WIRE WIRE WIRE

NO OF CONDUCTORS: YES NO

ASSEMBLY SPECIFICATIONS: YES NO

CONDUCTOR NO. | CONDUCTOR NO. | CONDUCTOR NO.

1 | 1 | 1

2 | 2 | 2

3 | 3 | 3

4 | 4 | 4

5 | 5 | 5

6 | 6 | 6

7 | 7 | 7

8 | 8 | 8

9 | 9 | 9

10 | 10 | 10

11 | 11 | 11

12 | 12 | 12

13 | 13 | 13

14 | 14 | 14

15 | 15 | 15

16 | 16 | 16

17 | 17 | 17

18 | 18 | 18

19 | 19 | 19

20 | 20 | 20

21 | 21 | 21

22 | 22 | 22

23 | 23 | 23

24 | 24 | 24

25 | 25 | 25

26 | 26 | 26

27 | 27 | 27

28 | 28 | 28

29 | 29 | 29

30 | 30 | 30

31 | 31 | 31

32 | 32 | 32

33 | 33 | 33

34 | 34 | 34

35 | 35 | 35

36 | 36 | 36

37 | 37 | 37

38 | 38 | 38

39 | 39 | 39

40 | 40 | 40

41 | 41 | 41

42 | 42 | 42

43 | 43 | 43

44 | 44 | 44

45 | 45 | 45

46 | 46 | 46

47 | 47 | 47

48 | 48 | 48

49 | 49 | 49

50 | 50 | 50

51 | 51 | 51

52 | 52 | 52

53 | 53 | 53

54 | 54 | 54

55 | 55 | 55

56 | 56 | 56

57 | 57 | 57

58 | 58 | 58

59 | 59 | 59

60 | 60 | 60

61 | 61 | 61

62 | 62 | 62

63 | 63 | 63

64 | 64 | 64

65 | 65 | 65

66 | 66 | 66

67 | 67 | 67

68 | 68 | 68

69 | 69 | 69

70 | 70 | 70

71 | 71 | 71

72 | 72 | 72

73 | 73 | 73

74 | 74 | 74

75 | 75 | 75

76 | 76 | 76

77 | 77 | 77

78 | 78 | 78

79 | 79 | 79

80 | 80 | 80

81 | 81 | 81

82 | 82 | 82

83 | 83 | 83

84 | 84 | 84

85 | 85 | 85

86 | 86 | 86

87 | 87 | 87

88 | 88 | 88

89 | 89 | 89

90 | 90 | 90

91 | 91 | 91

92 | 92 | 92

93 | 93 | 93

94 | 94 | 94

95 | 95 | 95

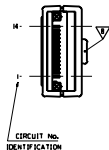
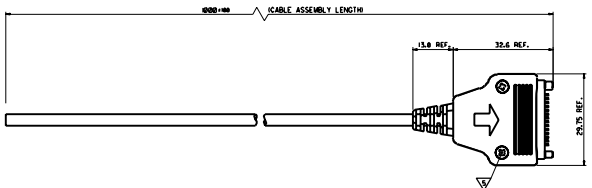
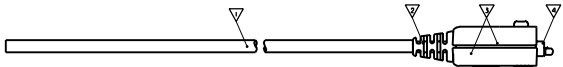
96 | 96 | 96

97 | 97 | 97

98 | 98 | 98

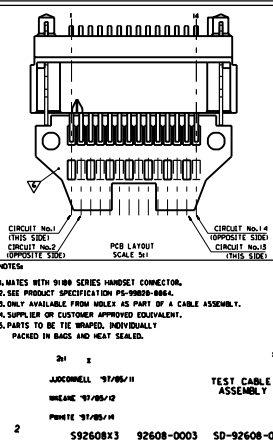
99 | 99 | 99

100 | 100 | 100



ACTUATOR NO. IDENTIFICATION
MOLEX 91200-0004

A3



SHFT. 1 OF 1

MRI-SD-92608-003

MODIFICATION RECORD INDEX

ECN	ISS.	DATE	INIT.	SYMS AFFECTED	DESCRIPTION OF MOD.
ECN E970571	A	91.02.2	JOC	1	ORIGINAL ISSUE
ECN E97066	A1	91.06.10	JOC	1	VARIUS MODS.
ECN E9900 R	A2	91.07.17	DOS	1	DOKE ADDED
ECN E9936	A3	91.08.29	JOC	1	ACTUATION BUTTON MOD

MOLEX EUROPE

REVISE ONLY ON CAD SYSTEM

592608X3, DCN A3

LEVEL CHART

1	17	33	49
2	18	34	50
3	19	35	51
4	20	36	52
5	21	37	53
6	22	38	54
7	23	39	55
8	24	40	56
9	25	41	57
10	26	42	58
11	27	43	59
12	28	44	60
13	29	45	61
14	30	46	62
15	31	47	63
16	32	48	64

LEVEL INDEX

RESERVED

RESERVED

Transp Top Ba / loose

91 DIMENSIONS

TABLES/CHARTS

91 REVISION TEXT & MRI

NOV/91/REV - Eng / far

91 01/09/91/REV - 1/10

NOV/91/REV - German

NOV/91/REV - French

RESERVED