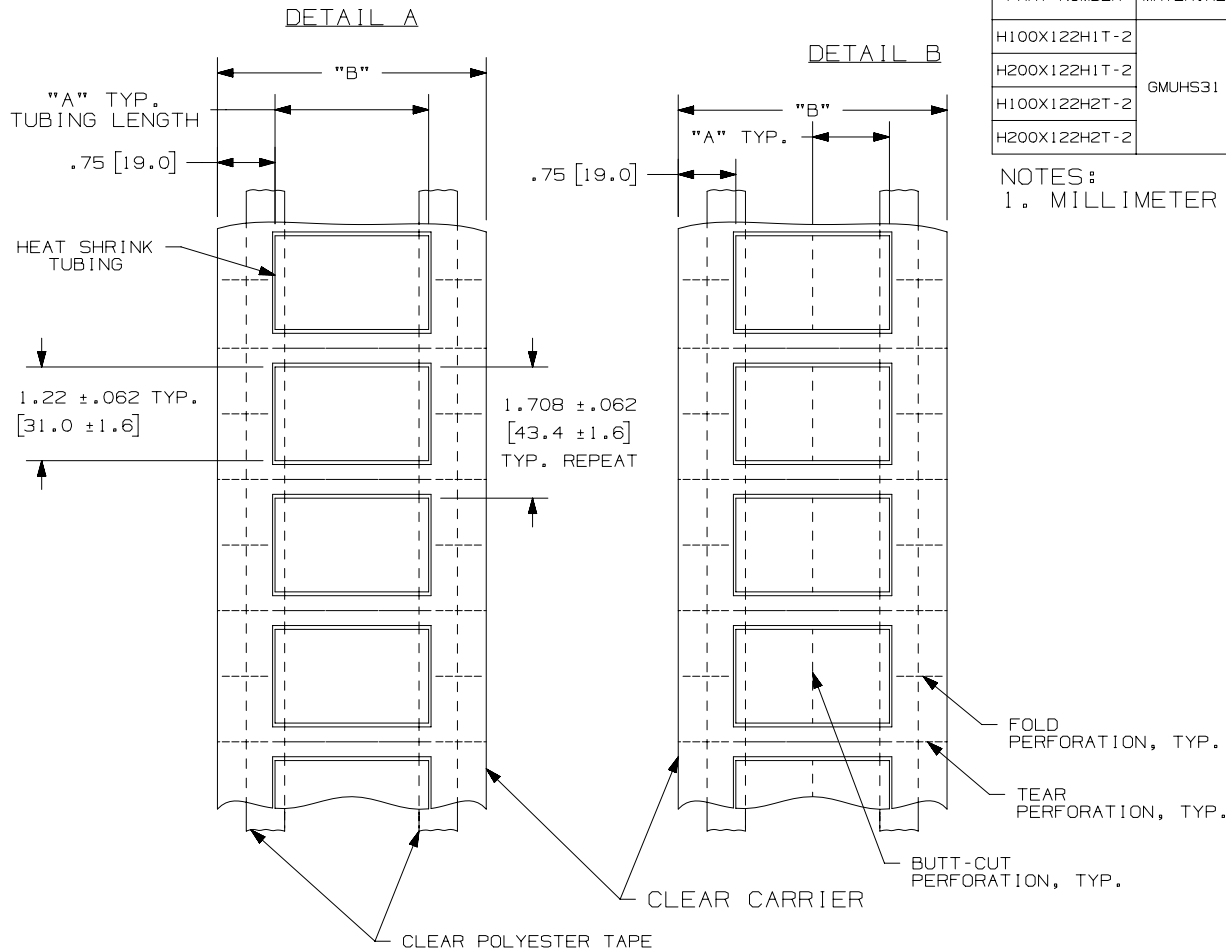
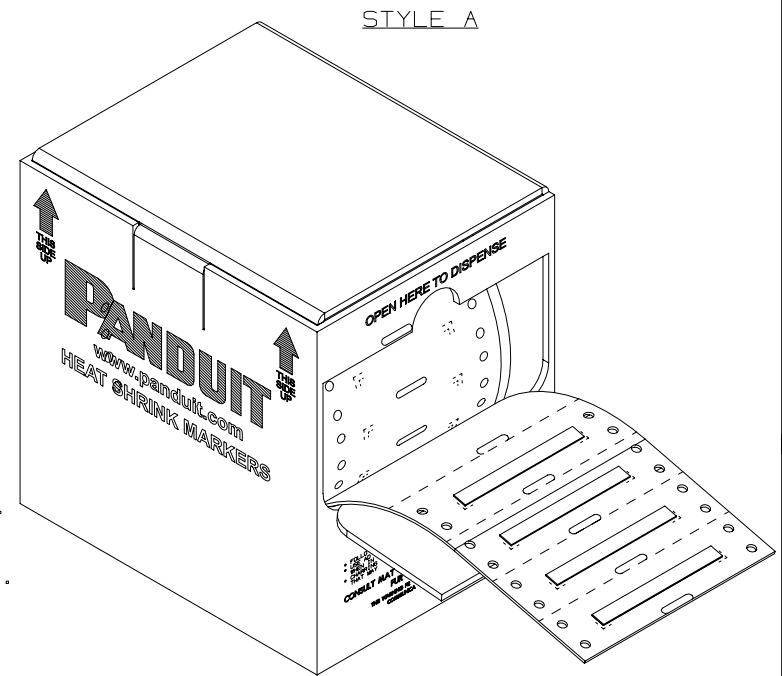


THIS COPY IS PROVIDED ON A RESTRICTED BASIS AND IS NOT TO BE USED IN ANY WAY DETRIMENTAL TO THE INTERESTS OF PANDUIT CORP.



PART NUMBER	MATERIAL	SEE DETAIL	"A" +/- .062	"B" +/- .062	INSIDE NOMINAL DIA.	MARKER ACROSS	TUBING COLOR	PKG. QTY.	SEE STYLE
H100X122H1T-2	GMUHS31	B	1.00 [25.4]	3.50 [88.9]	3/4 in. [19.0 mm]	2	WHITE	500	A
H200X122H1T-2		A	2.00 [50.8]			1	WHITE	250	A
H100X122H2T-2		B	1.00 [25.4]			2	YELLOW	500	A
H200X122H2T-2		A	2.00 [50.8]			1	YELLOW	250	A

NOTES:
1. MILLIMETER ARE IN [].



REV	DATE	BY	CHK	APR	DESCRIPTION	ECN
3	2/23/18	RVU	JW	JHAC	THE CUSTOMER DRAWING FOR H100X122H*T-2 SHOULD BE C10742. NOT C10642.	GAECN04497
2	1/22/14	RVU	SEWH	MSAD	UPDATE THE CURRENT PANDUIT LOGO.	GAECN01410
1	8/21/09	RVU		SCWE	CHANGING PKG. QTY. TO ALLOW ROLL TO FIT INTO STD. PKG. 500 WAS 1000. 250 WAS 500.	5832
0	7/7/09	RVU		SCWE	DRAWING RELEASE.	5791

TITLE						
H***X122H*T-2 TWO-SIDED HEAT SHRINK LABEL CUSTOMER DRAWING						
ITEM REVISION NAME					100472XF/06	
DATASET FILE NAME					100472XF_DC_C10742/04D	
UNLESS OTHERWISE SPECIFIED, DIMENSIONAL TOLERANCES ARE: IN [mm]					PANDUIT MATERIAL: HEAT SHRINK TUBING, GMUHS31	
.x ± .12 [3.05]		.xxx ± .020 [5.08]		DRAWING NUMBER: C10742		
.xx ± .062 [1.57]		ANGLES ±		THIRD ANGLE PROJECTION		
DRAWN BY		DATE		CHK		SCALE
RVU		7/7/09		SCWE		NTS
SHT 1 OF 1					A	

D10100DA/16