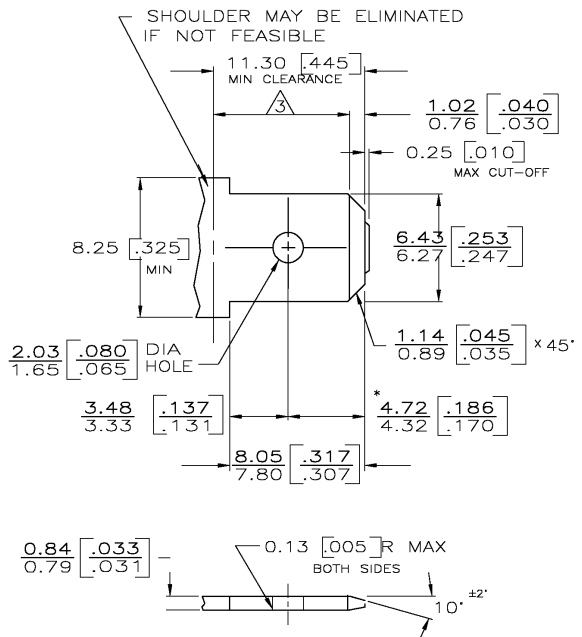
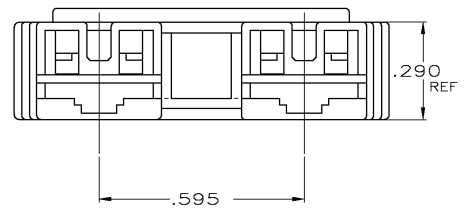
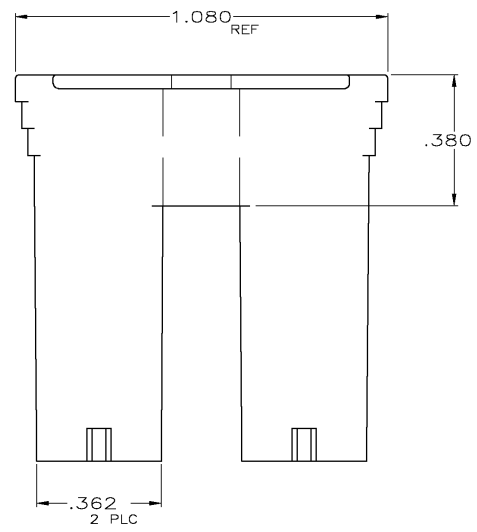


| LOC | DIST | REVISIONS |    |                      |         |     |      |
|-----|------|-----------|----|----------------------|---------|-----|------|
| AF  | 50   | P         | LR | DESCRIPTION          | DATE    | DWN | APVD |
|     |      | M         |    | REV PER 0G3A-0753-03 | 08DEC03 | JR  | KY   |

### SUGGESTED MATING TAB

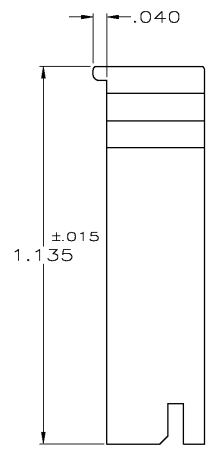


- 1 - MATL: 1/2H BRASS OR NICKEL PL STEEL.
  - 2 - NO BURRS PERMISSIBLE AT HOLE.
  - 3 - MUST BE FLAT WITHIN 0.076 [0.003] OVER THIS LENGTH.
  - 4 - TIN PLATING IS REQUIRED ON BRASS WHEN TERMINAL TEMP. IS OVER 225° F.
  - 5 - HOLE MUST BE SYMMETRICAL ABOUT TAB  $\phi$  WITHIN 0.076 [0.003]
- \* TO BE USED ONLY WHEN SHOULDER IS ELIMINATED.



1 FOR USE WITH MKII POSITIVE LOCK, LOW INSERTION FORCE FASTON RECEPTACLES AND MOST BUDGET FASTON RECEPTACLES.

2 PRELIMINARY - NOT FOR PRODUCTION



|                      |            |
|----------------------|------------|
| VO BLACK             | 1-520935-8 |
| VO YELLOW            | 1-520935-6 |
| VO BLUE              | 1-520935-5 |
| VO RED               | 1-520935-2 |
| VO NATURAL           | 1-520935-1 |
| BLACK                | 520935-8   |
| BROWN                | 520935-7   |
| YELLOW               | 520935-6   |
| BLUE                 | 520935-5   |
| GREEN                | 520935-4   |
| WEATHER RESIST BLACK | 520935-3   |
| RED                  | 520935-2   |
| NATURAL              | 520935-1   |
| COLOR                | PART NO    |

|                                        |        |                   |         |                    |      |                                                                   |  |               |      |
|----------------------------------------|--------|-------------------|---------|--------------------|------|-------------------------------------------------------------------|--|---------------|------|
| THIS DRAWING IS A CONTROLLED DOCUMENT. |        | DWN               | JR RUTH | 4/14/88            |      | Tyco Electronics Corporation<br>Harrisburg, PA 17105              |  |               |      |
| DIMENSIONS: INCHES                     |        | CHK               | M FEHER | 4/14/88            |      | HOUSING, RECP, POSITIVE-LOCK & STANDARD FASTON, .250 SERIES, MKII |  |               |      |
| TOLERANCES UNLESS OTHERWISE SPECIFIED: |        | APVD              | R KUZO  | 4/14/88            | NAME |                                                                   |  |               | SIZE |
| 0 PLC                                  | ± -    | PRODUCT SPEC      |         |                    |      |                                                                   |  |               |      |
| 1 PLC                                  | ± -    | APPLICATION SPEC  |         |                    |      |                                                                   |  |               |      |
| 2 PLC                                  | ± -    | WEIGHT            |         |                    |      |                                                                   |  |               |      |
| 3 PLC                                  | ± .010 | CUSTOMER DRAWING  |         |                    |      |                                                                   |  |               |      |
| 4 PLC                                  | ± -    | SCALE             |         |                    |      |                                                                   |  |               |      |
| ANGLES                                 | ± -    | SHEET             |         |                    |      |                                                                   |  |               |      |
| MATERIAL: 6/6 NYLON                    |        | FINISH: SEE TABLE |         | WEIGHT: -          |      | SIZE: A2                                                          |  | CODE: 00779   |      |
|                                        |        |                   |         | DRAWING NO: 520935 |      | SCALE: 4:1                                                        |  | SHEET: 1 OF 1 |      |
|                                        |        |                   |         |                    |      |                                                                   |  | REV: M        |      |

520935

A