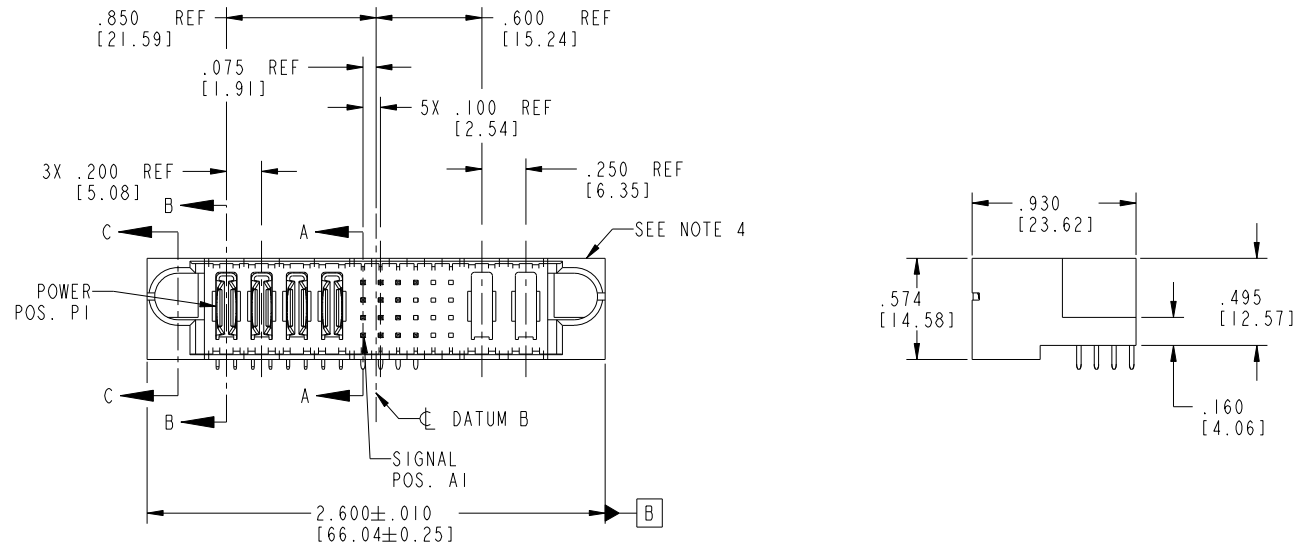


Tous droits strictement reserves. Reproduction ou communication a des tiers interdite sous quelque forme que ce soit sans autorisation ecrite du propriétaire. Propriete de c FCI. Droits de reproduction FCI.



All rights strictly reserved. Reproduction or issue to third parties in any form whatever is not permitted without written authority from the proprietor. Property of FCI. Copyright FCI.

PRODUCT NO.	ROWS	POWER				SIGNAL						POWER			
		E1	P1	P2	P3	P4	1	2	3	4	5	6	P5	P6	E2
51939-118	D C B A		PA	PA	PA	PA	UUUU	XX	XX	XX	XX	XX	XX	XX	
NOTE: 3						TTTT	XX	XX	XX	XX	XX	XX	XX		
						RRRR	XX	XX	XX	XX	XX	XX	XX		



CODE	DIM "M" MATING LENGTH	CONTACT TYPE
F	.220 [5.59]	SIGNAL
R	.270 [6.86]	SIGNAL
S	.270 [6.86]	SIGNAL
T	.270 [6.86]	SIGNAL
U	.270 [6.86]	SIGNAL
PA	N/A [N/A]	POWER
X	OMITTED	OMITTED

mat'l code				SEE NOTE 2		tolerances unless otherwise specified		CUSTOMER		FCI	
ltr	ecn no.	dr	date	linear	.XX±.01/0.X±0.3	projection		COPY		www.fciconnect.com	
A	V04-0488	TAB	05/13/04	angles	.XXX±.005/0.XX±0.13	INCH/MM		title		4P + 24S + 2P	
B	DG05-0135	GJM	06/06/05		.XXX±.0020/0.XXX±0.051	scale		RIGHT ANGLE SOLDER HEADER		product family	
C	DG06-0013	RYAN	01/10/06		0°±2°	1:1		PwrBlade		code	
D	DG09-0003	WD	02/12/09	dr	T. BRUNGARD	05/13/04		size		213	
				engr	M. GRAY	05/13/04		dwg no		sheet	
				chr	M. GRAY	05/13/04		A		51939-118	
				appd	M. GRAY	05/13/04		1 of 4			
sheet index	revision sheet	D	D	D	D			cage code		22526	
		1	2	3	4						

1 | 2

Pro/E

3 |

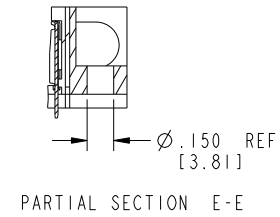
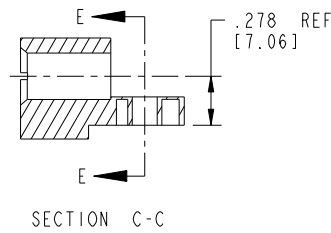
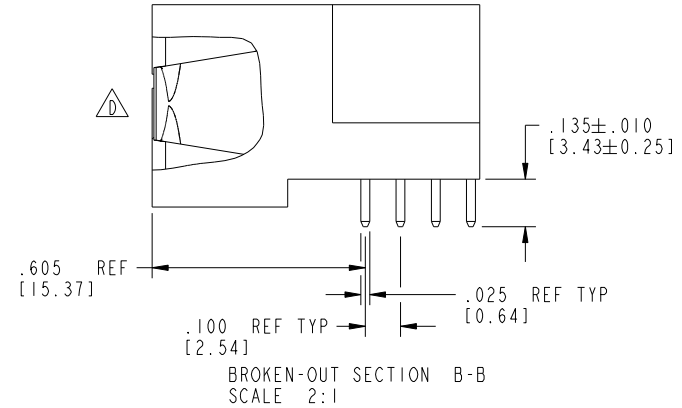
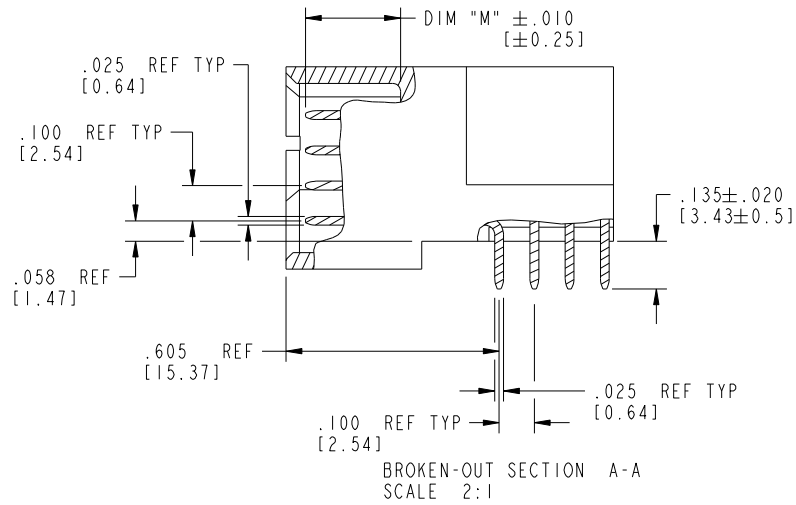
cage code 22526

4

Tous droits strictement réservés. Reproduction ou communication à des tiers interdite sous quelque forme que ce soit sans autorisation écrite du propriétaire. Propriété de c FCI. Droits de reproduction FCI.

All rights strictly reserved. Reproduction or issue to third parties in any form whatsoever is not permitted without written authority from the proprietor. Property of FCI. Copyright FCI.

PRODUCT NUMBER  
51939-118\_\_



mat'l code		SEE NOTE 2		tolerances unless otherwise specified		CUSTOMER		FCI	
lfr	ecn no.	dr	date	linear	.XX±.01/0.X±0.3	COPY		www.fciconnect.com	
D					.XXX±.005/0.XX±0.13	projection		title 4P + 24S + 2P	
				angles	.XXX±.0020/0.XXX±0.051	INCH/MM		RIGHT ANGLE SOLDER HEADER	
				dr	0°±2°	scale		product family PwrBlade code 213	
				enr	T. BRUNGARD 05/13/04	1:1		size dwg no 51939-118 sheet 2 of 4	
				chr	M. GRAY 05/13/04				
				appd	M. GRAY 05/13/04				
sheet index	revision sheet								

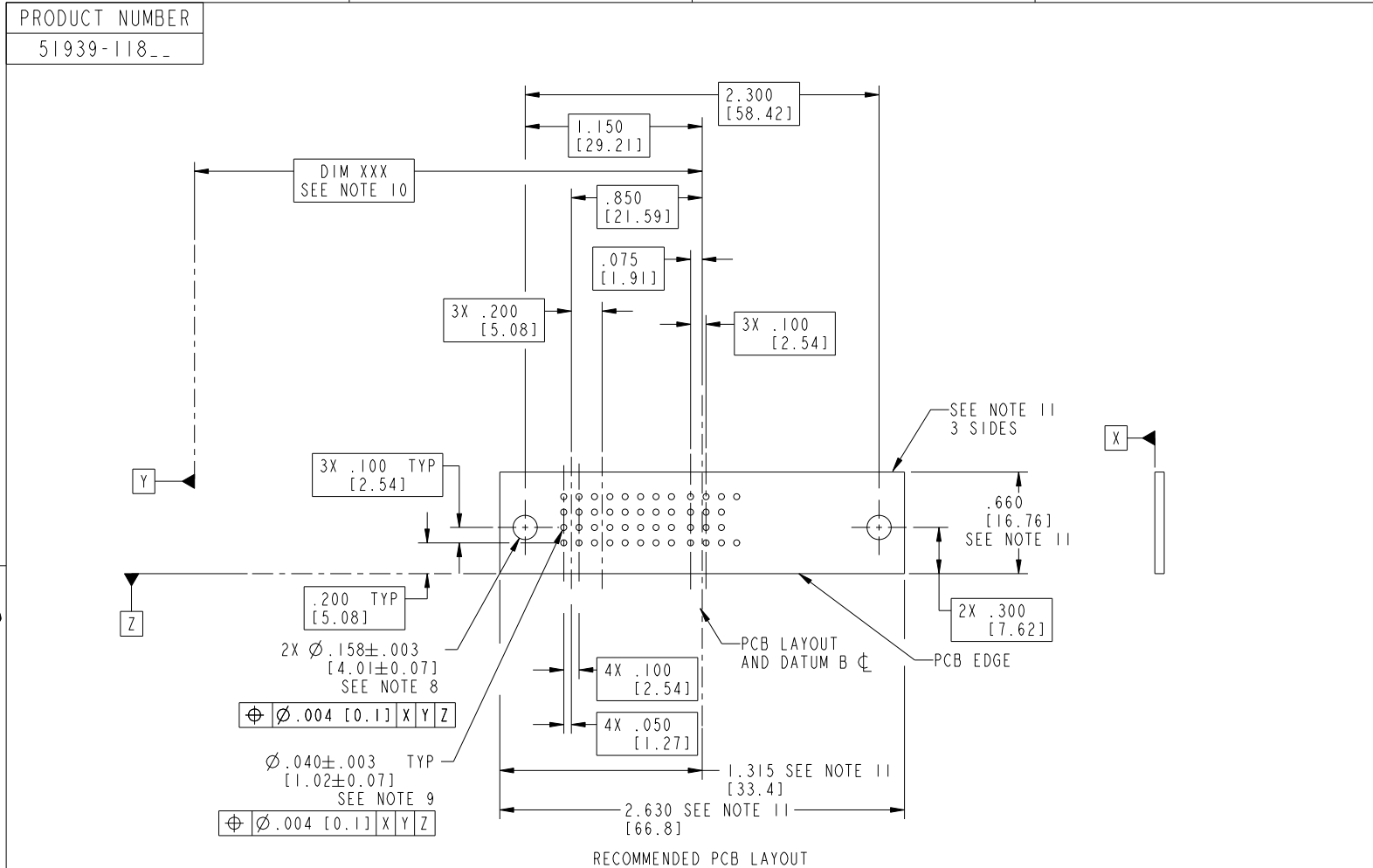
Pro/E

cage code 22526

Tous droits strictement réservés. Reproduction ou communication à des tiers interdite sous quelque forme que ce soit sans autorisation écrite du propriétaire. Propriété de c.FCI. Droits de reproduction FCI.



All rights strictly reserved. Reproduction or issue to third parties in any form whatever is not permitted without written authority from the proprietor. Property of FCI. Copyright FCI.



mat'l code		SEE NOTE 2		tolerances unless otherwise specified		CUSTOMER		FCI		www.fciconnect.com	
lfr	ecn no.	dr	date	linear	.XX±.01/0.X±0.3	COPY		title 4P + 24S + 2P			
D					.XXX±.005/0.XX±0.13	projection		RIGHT ANGLE SOLDER HEADER			
				angles	.XXX±.002/0.XXX±0.051	INCH/MM		product family		code	
				dr	0°+2°	scale		PwrBlade		213	
				enr	T. BRUNGARD 05/13/04	1:1		size		sheet	
				chr	M. GRAY 05/13/04	A		dwg no		3 of 4	
				appd	M. GRAY 05/13/04	cage code		51939-118			
sheet index	revision sheet					22526					

Pro/E

cage code 22526

Tous droits strictement reserves. Reproduction ou communication a des tiers interdite sous quelque forme que ce soit sans autorisation écrite du propriétaire. Propriete de c FCI. Droits de reproduction FCI.



All rights strictly reserved. Reproduction or issue to third parties in any form whatever is not permitted without written authority from the proprietor. Property of FCI. Copyright FCI.

PRODUCT NUMBER  
51939-118\_\_

NOTES:

1. DIMENSIONS AND TOLERANCES ARE IN ACCORDANCE WITH ASME Y14.5M, 1994 UNLESS OTHERWISE SPECIFIED.

CONNECTOR NOTES:

- 2. HOUSING MATERIAL: UL 94 V-0 GLASS FILLED HIGH-TEMP THERMOPLASTIC  
POWER CONTACT MATERIAL: COPPER ALLOY  
SIGNAL PIN MATERIAL: COPPER ALLOY

3. SEE ITEM 1 & 2 IN PRINT 10064183 FOR PLATING SPEC OF 51939-118 AND 51939-118LF RESPECTIVELY.

- 4. MANUFACTURER'S NAME, P/N, AND DATE CODE TO APPEAR ON THIS SURFACE.

5. PRODUCT SPECIFICATION GS-12-149.  
APPLICATION SPECIFICATION BUS-20-067.

6. PACKAGED IN TRAYS.

PCB NOTES:

7. ALL HOLE DIAMETERS ARE FINISHED HOLE SIZE.

- 8. MOUNTING HOLES, WHERE APPLICABLE, ARE UNPLATED.

- 9.  $\varnothing .0453 \pm .0010$  [1.151  $\pm$  0.025] DRILLED HOLES PLATED WITH  
.0003 [0.008] MIN SnPb OVER .001 [0.03]  
TO .003 [0.08] Cu PLATING TO ACHIEVE  
 $\varnothing .040 \pm .003$  [1.02  $\pm$  .07] HOLE.

- 10. "DIM XXX" TO BE DETERMINED BY THE CUSTOMER.

- 11. CONNECTOR KEEP-OUT ZONE.

12. A  $\Delta$  SYMBOL WILL BE NEXT TO ANY DIMENSION, VIEW, OR NOTE WHICH HAS BEEN MODIFIED WITH THE CURRENT DRAWING REVISION.

mat'l code		SEE NOTE 2		tolerances unless otherwise specified		CUSTOMER		 www.fciconnect.com	
ltr	ecn no.	dr	date	linear	.XX±.01/0.X±0.3		COPY		 title 4P + 24S + 2P RIGHT ANGLE SOLDER HEADER
D					.XXX±.005/0.XX±0.13		 product family PwrBlade code 213		
				angles	.XXX±.002/0.XXX±0.051		 size dwg no 51939-118 sheet 4 of 4		
				dr	0°±2°		 scale 1:1		
				enr	T. BRUNGARD	05/13/04	 cage code 22526		
				enr	M. GRAY	05/13/04			
				chr	M. GRAY	05/13/04			
				appd	M. GRAY	05/13/04			
sheet index	revision sheet								

1 | 2

3 |

4

1 | 2

Pro/E

3 |

cage code 22526

4