

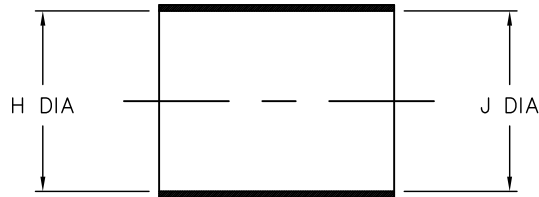
4

3

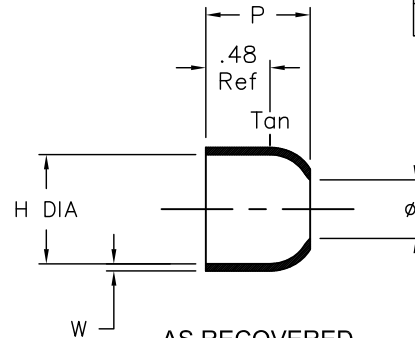
2

1

REVISIONS		
LTR	DESCRIPTION	DATE
A	INITIAL RELEASE OF DWG PER ECO-10-025273	12/09/2010



AS EXPANDED



AS RECOVERED

## NOTES:

- PART IS TO BE MADE FROM 202A132.
- DIMENSION APPEARING IN TABLE ARE AS FOLLOWS:  
a - AS SUPPLIED  
b - AFTER UNRESTRICTED RECOVERY
- COATING (ADHESIVE) IS OPTIONAL. AS SUPPLIED DIMENSIONS APPEARING IN TABLE ARE FOR UNCOATED PARTS. WHEN COATING IS ADDED, ENTRY DIAMETER WILL BE REDUCED BY .06 MAX.

ORDERING INFORMATION: 202A132 -XX -20 /XX -0

BASE PART NUMBER

MATERIAL DASH NUMBER  
(See Compatibility Chart)

MODIFICATION NUMBER

ADHESIVE SLASH NUMBER  
(See Compatibility Chart)

COLOR DESIGNATOR

TABLE OF DIMENSIONS

PART DESCRIPTION	H		J		P	W
	MIN a	MAX b	±10% a	±10% b	±10% b	±20% b
202A132-12-20	.70 [17,8]	.56 [14,2]	.70 [17,8]	.30 [7,6]	.78 [19,8]	.07 [1,78]

## CUSTOMER DRAWING

UNLESS OTHERWISE SPECIFIED  
DIMENSIONS ARE INCHES. METRIC  
DIMENSIONS ARE IN BRACKETS.

DECIMAL TOLERANCES

.XXX ± 0.005 [0.13 mm]  
.XX ± 0.01 [0.25 mm]  
.X ± 0.1 [0.50 mm]

ANGLE TOLERANCE

.X ± 1 DEG.

DRAWN

G.Rositano  
12/03/10

APPROVED

D.Hurrell  
12/08/10

Tyco Electronics

Raychem Molded Parts  
305 Constitution Dr  
Menlo Park, CA 94025

TITLE

BOOT, STRAIGHT

TYCO ELECTRONICS RESERVES THE RIGHT TO  
AMEND THIS DRAWING AT ANY TIME. USERS  
SHOULD EVALUATE THE SUITABILITY OF THE  
PRODUCT FOR THEIR APPLICATION.THIRD ANGLE  
PROJECTIONSIZE  
BCODE IDENT. NO.  
06090

DWG. NO.

202A132-XX-20

© 2009 Tyco Electronics Corporation. All rights reserved.

DO NOT SCALE THIS DRAWING

SHEET 1 OF 1

If this document is printed it becomes uncontrolled. Check for the latest revision

COMPATIBILITY CHART

MATERIAL DASH No.	MATERIAL DESCRIPTION	MATERIAL SPEC	ADHESIVE COATING SLASH No.	ADHESIVE COATING "S" No.
-12	FLUROELASTOMER, FLEXIBLE	RT-1312	N/A	N/A

D

D

C

C

B

B

B

B

A

A

3

2

1