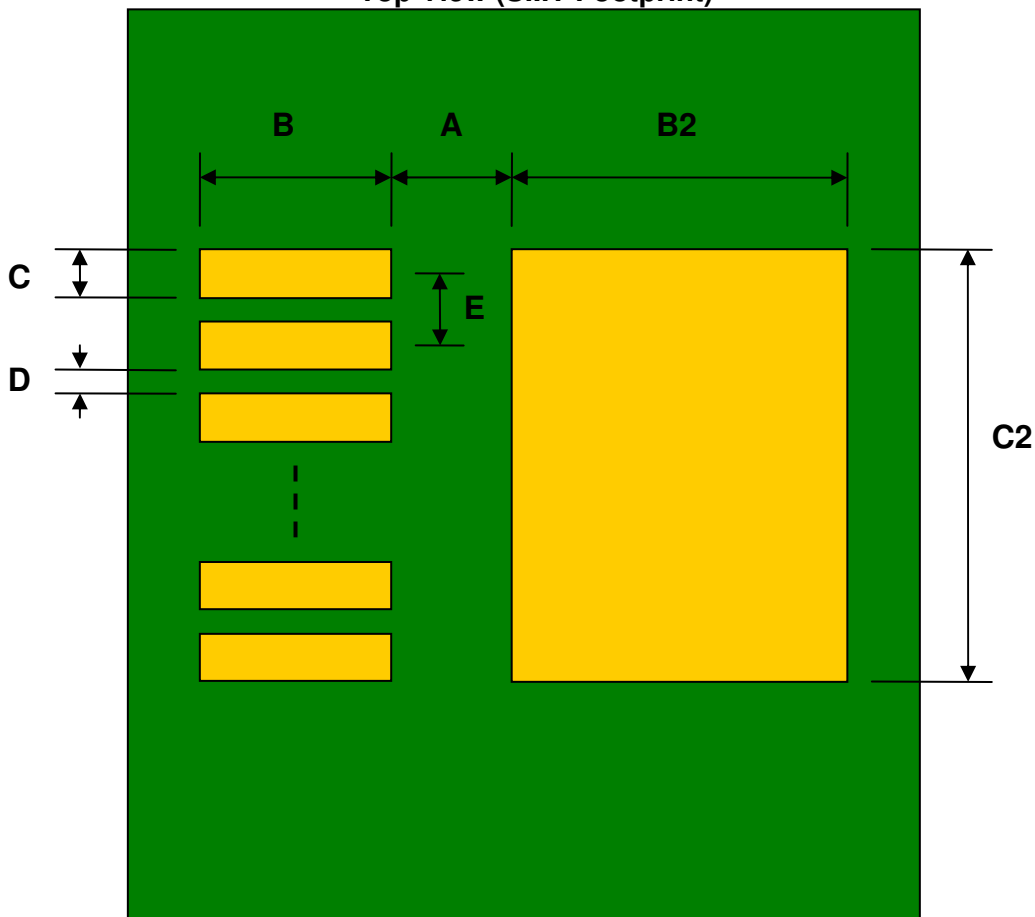


TO-252-5 to DIP-10 SMT Adapter (1.14 mm pitch, 6.5 x 6.2 mm body)

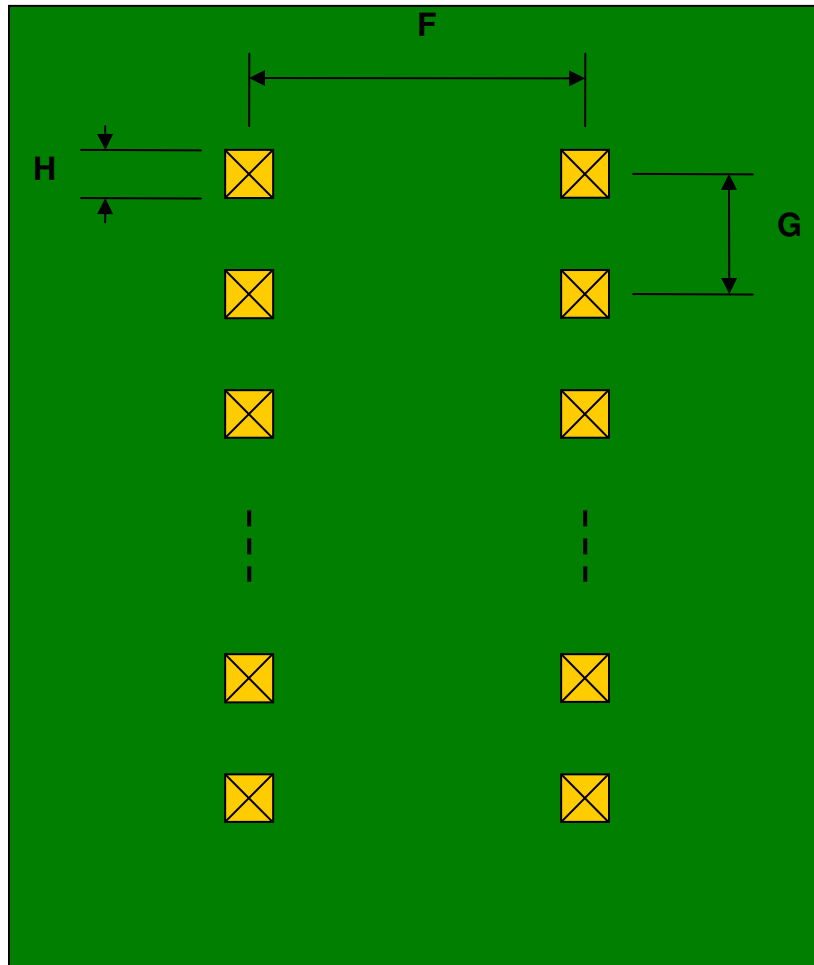
| REF. | DIMENSIONS | | | | | |
|------|------------|-------|------|--------|-------|------|
| | mm | | | inches | | |
| | MIN. | TYP. | MAX. | MIN. | TYP. | MAX. |
| A | | 1.825 | | | | |
| B | | 2.75 | | | | |
| C | | 0.80 | | | | |
| B2 | | 7.00 | | | | |
| C2 | | 6.00 | | | | |
| D | | 0.345 | | | | |
| E | | 1.145 | | | | |
| F | | | | | 0.300 | |
| G | | | | | 0.100 | |
| H | | | | | 0.025 | |

Top View (SMT Footprint)



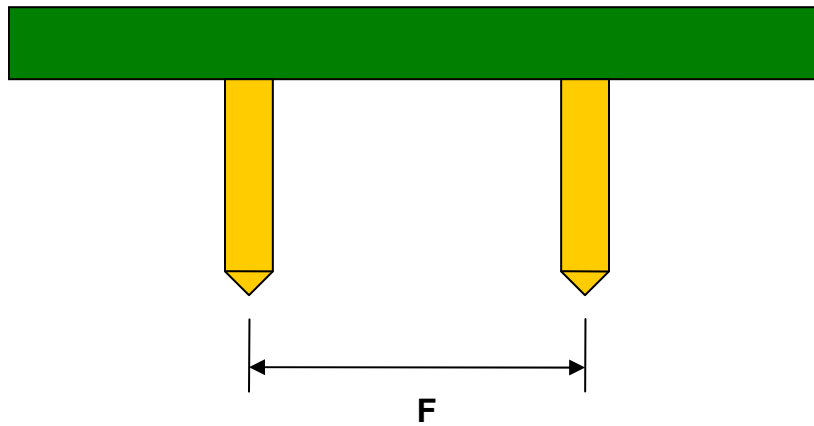
(Representative drawing only - not to scale)

Bottom View (DIP Pins)



(Representative drawing only - not to scale)

Side View (DIP Pins)



(Representative drawing only - not to scale)