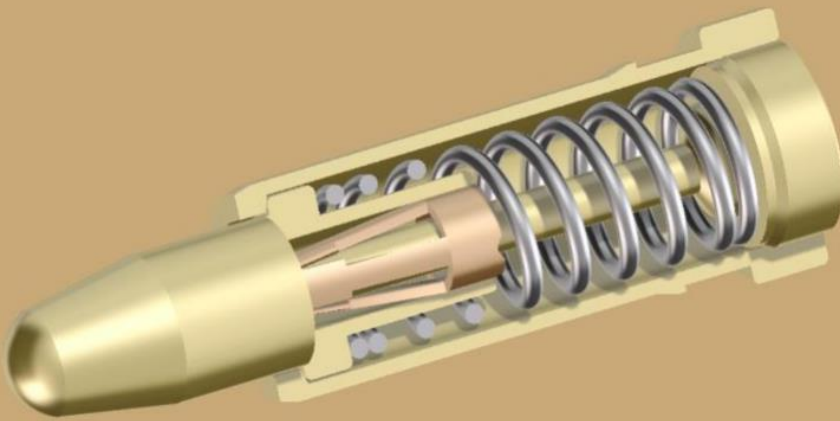


SERIES 0900-CLIP

SPRING LOADED CONNECTIONS

PRECISE, RELIABLE, AND COST EFFECTIVE STANDARD SOLUTIONS



preci-dip

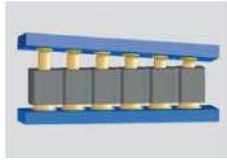
swiss world connects



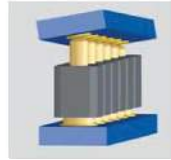
preci-dip

ADVANTAGES OF SPRING LOADED CONTACTS

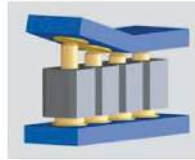
Spring loaded contacts facilitate blind mating requirements, are more tolerant to misaligned and non-coplanar mating conditions, and capable of achieving up to one million mating cycles.



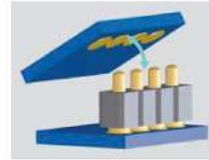
Accepts important positioning tolerances of the



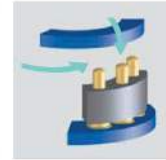
Connects surfaces non-perpendicular to



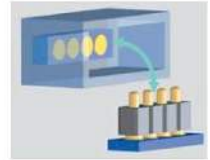
Compensates errors of parallelism and flatness



Connects pivoting or rotating elements



Connects with sliding mating action (push & lock)

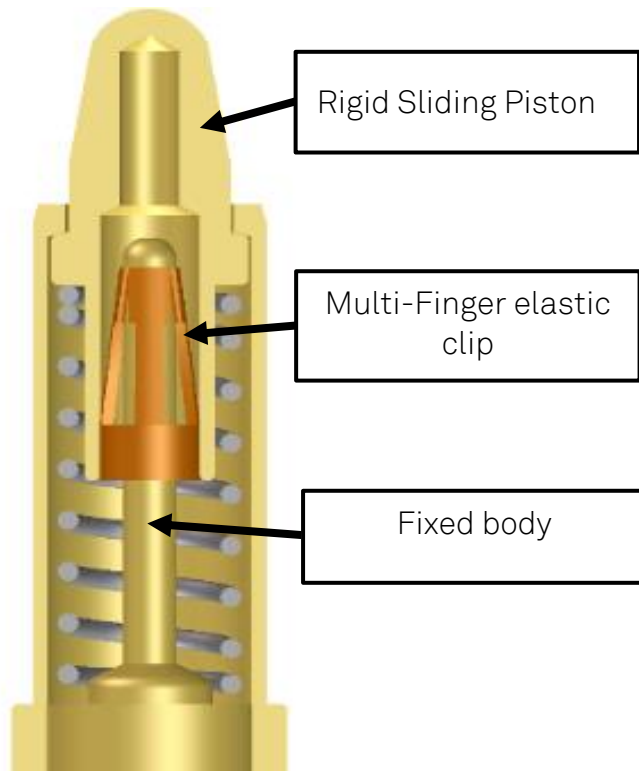


Suitable for blind mating

CLIP TECHNOLOGY IN SPRING LOADED CONTACTS

With many years of experiences in spring loaded contacts manufacturing, PRECI-DIP has developed a unique patented design with integrated multi-finger clip, which establishes high-reliability and electrical continuity between bodies and pistons. It also ensures low, stable electrical resistance value without micro-discontinuities, even when the piston is moving or exposed to intensive shocks and vibration.

Want to know more? [Watch the video.](#)



preci-dip
swiss world connects

CLIP establishes a reliable and efficient connection between body and piston.



Compliant to:

- Shock and Vibration up to 2000Hz
- Current up to 5A

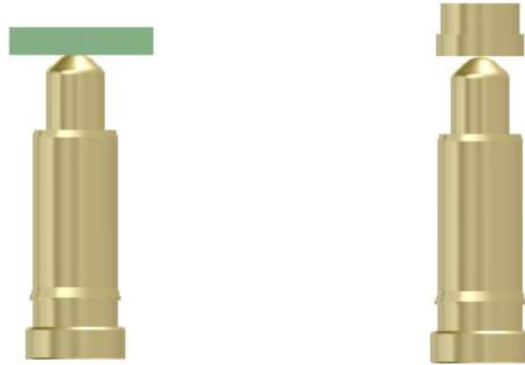


preci-dip

DESIGN RULES

PRECI-DIP Spring loaded contact solutions are designed to mate to various kinds of surfaces:

- A gold plated surface on a printed circuit board.
- A gold target pad with a SMT, a soldering tail, a solder cup or a wire termination.

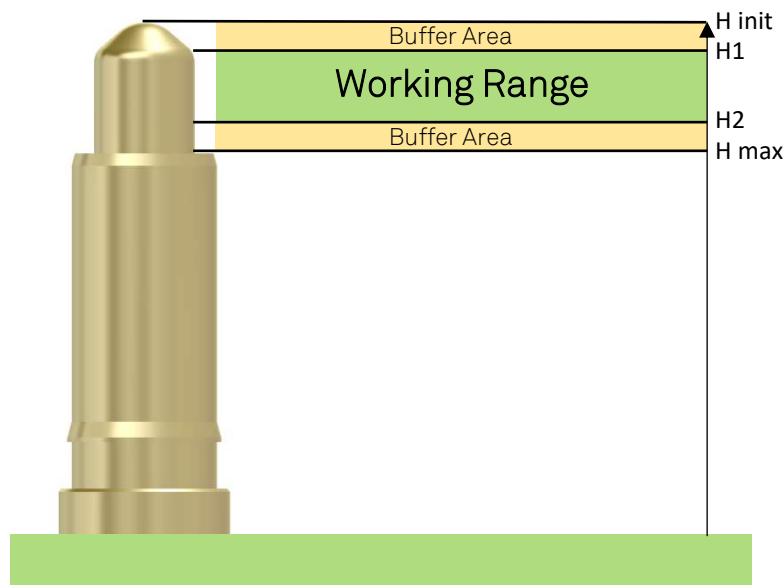


PRINTED CIRCUIT BOARD

A TARGET PAD

In all cases, a key parameter for designing a reliable connection is the distance between the mating surface and the base of the spring pin, commonly named “H”.

To make a reliable connection, the mating surface must be located in the working area between H1 and H2.



For each application, we always ask for working range in order to propose the best design to fit customer applications.



preci-dip

PRECI-DIP HIGH RELIABILITY SPRING PIN SERIES

SERIES 0900-CLIP

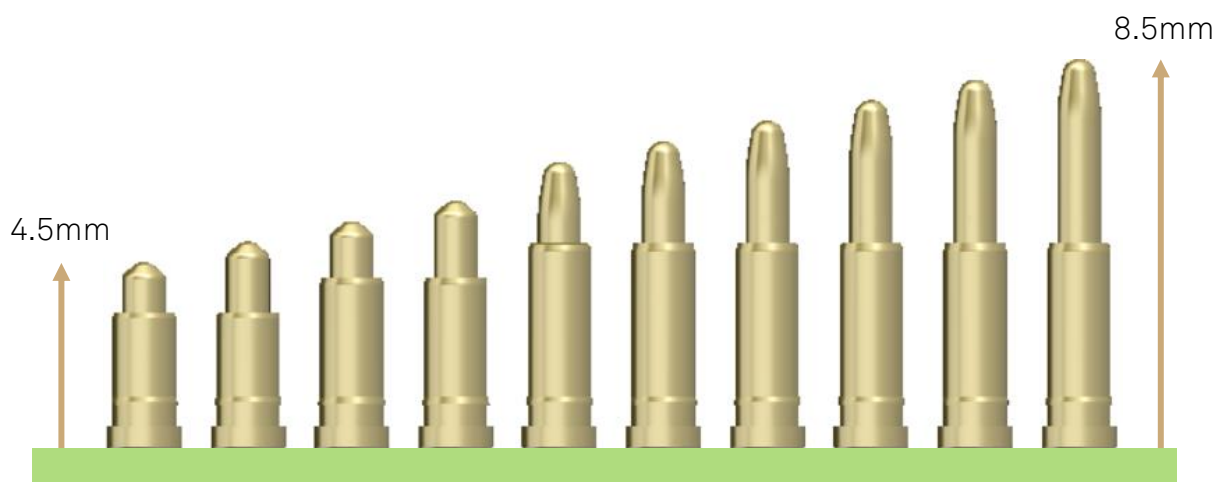
&

SERIES 811/813-CLIP

To increase its line of catalogue products, PRECI-DIP has created a new line of spring loaded contacts with an integrated multi-finger clip:



This new line of products have been designed to fit with most of applications, length of the contact is adaptive according your working range from 4.5 mm up to 8.5 mm. Base diameter is only 1.83 mm which allows to implant it with pitch of 0.1' (2.54mm).



On the next page, you can see all the technical details to help you choose the best contact or connector for your application.



preci-dip

SERIES 0900-CLIP

TECHNICAL SPECIFICATIONS:

OPERATING CURRENT: Max 5 A
DYNAMIC CONTACT RESISTANCE: 20mΩ
OPERATING TEMPERATURE RANGE: -55/+125 °C
DURABILITY: 20'000 cycles
PRESS-IN MOUNT: Dia 1.58 mm hole insulator

MATERIALS / PLATINGS:

Barrel : CuZn36Pb3 - 0.125 μm Au / 2.5 μm Ni
Rod : CuSn4Pb4Zn4 - 0.5μm Au / 2.5 μm Ni
Piston : CuZn36Pb3 - 0.5 μm Au / 2.5 μm Ni
Clip : BeCu C17200 - 0.5 μm Au / 2.5 μm Ni
Spring: Stainless steel DIN 17224

High reliability spring loaded contact (SLC) surface mount, clip design.

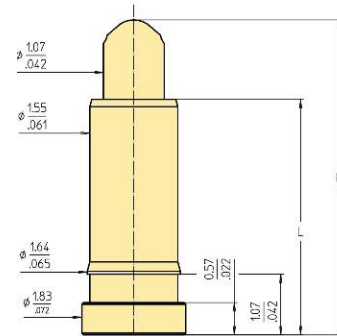
ORDERING NUMBER:

Bulk:

T&R Packaging:

090X-X-CLIP:

090X-X-CLIP-02:



See table below for final ordering number according height and working range specifications

Ordering Number	Barrel Length (L)	Total Height (H init)	Initial Force	WORKING RANGE CHARACTERISTIC			
				Start height (H1)	Start Force (F1)	End Height (H2)	End force (F2)
<u>0900-1-CLIP</u>	3.4	4.55	0.35 N	4.35	0.45 N	3.75	0.85 N
<u>0900-2-CLIP</u>	3.9	5.05	0.40 N	4.85	0.5 N	4	0.90 N
<u>0900-3-CLIP</u>	4.15	5.55	0.50 N	5.35	0.57N	4.25	1.0N
<u>0900-4-CLIP</u>	4.15	6	0.50 N	5.8	0.57 N	4.6	1.0N
<u>0907-0-CLIP</u>	5	6.55	0.50 N	6.35	0.57 N	4.95	1.0 N
<u>0907-1-CLIP</u>		7		6.8		5.45	
<u>0907-2-CLIP</u>		7.5		7.3		5.95	
<u>0907-3-CLIP</u>		8		7.8		6.45	
<u>0907-4-CLIP</u>		8.5		8.3		6.95	

Options available:

- Other plating options on request
- Other height or termination, please consult

Spring loaded contacts can be customized if required for specific needs. For any technical questions about specifications of the product, do not hesitate to contact us: sales@precidip.com .



preci-dip

SERIE 811/813-CLIP

TECHNICAL SPECIFICATION

INSULATOR: Black glass filled polyester PCT-GF30-FR

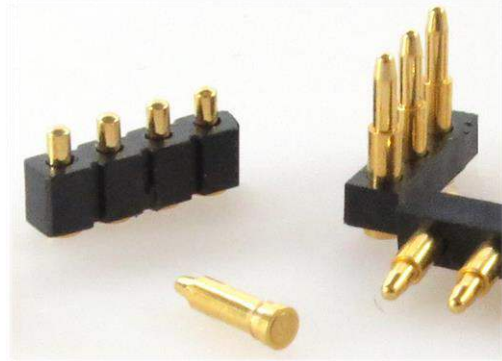
DYNAMIC CONTACT RESISTANCE: 20mΩ

OPERATING TEMPERATURE RANGE: -55/+125 °C

COPLANARITY SMD: 0.1 mm (on 25 mm long)

DURABILITY: 20'000 cycles

OPERATING CURRENT: Max 5 A

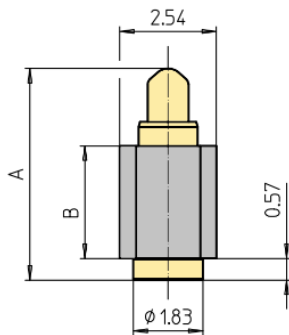


ORDERING NUMBER

Single row:

Bulk: **811-SS-NNN-30-6XX101-CLIP**

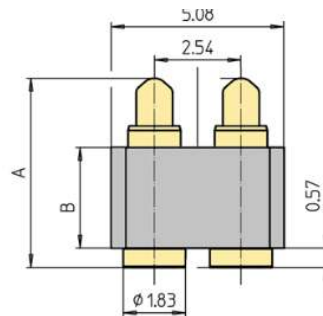
T&R: **811-SS-NNN-30-6XX191-CLIP**



Double row:

Bulk: **813-SS-NNN-30-6XX101-CLIP**

T&R: **813-SS-NNN-30-6XX191-CLIP**



Replace NNN by number of poles, standard number of contact 2 to 20contacts

See table below for final ordering number according to height and working range specifications

AVAILABLE CONECTOR HEIGHTS				WORKING RANGE CARACTERISTIC			
6XX Code	Initial Height A (mm)	Stroke (S)	Plastic Body Height B(mm)	Start height (H1)	Start Force (F1)	End Height (H2)	End force (H2)
675	4.5	0.6	2.95	4.35	0.45 N	3.75	0.85 N
676	5	0.85		4.85	0.5 N	4	0.90 N
677	5.5	1.1		5.35	0.57N	4.25	1.0N
678	6	1.4		5.8	0.57 N	4.4	1.0N
679	6.5	1.4	4	6.35	0.57 N	4.95	1.0 N
680	7			6.8		5.45	
681	7.5			7.3		5.95	
682	8			7.8		6.45	
683	8.5			8.3		6.95	

Example: For a 5.5 mm height connector, single row with 4 poles ordering number will be: 811-SS-004-30-677101-CLIP.

Options available:

- Tape and reel on request; replace suffixes 101 by 191 at the end of the ordering number
- Other plating options on request.