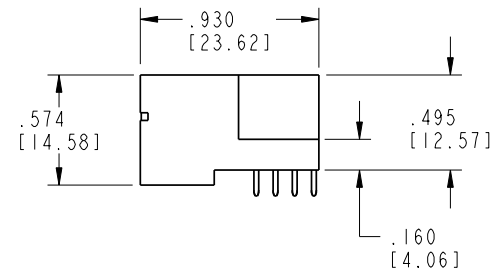
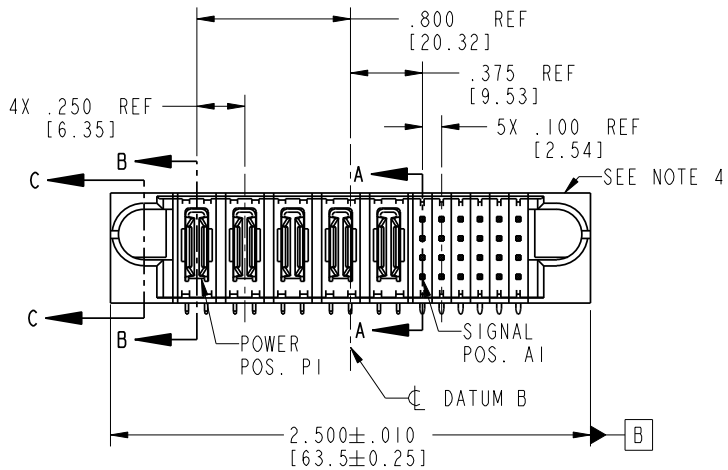
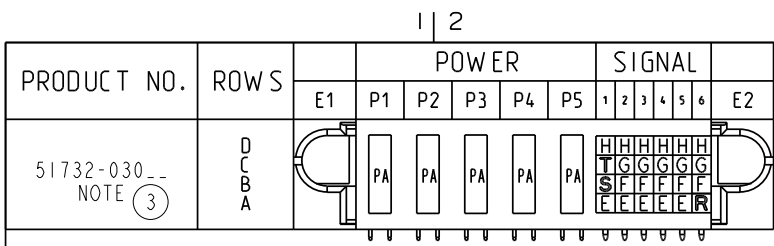


Tous droits strictement réservés. Reproduction ou communication o des liers interdite sous quelque forme que ce soit sans autorisation écrite du propriétaire. Propriété de c FCI. Droits de reproduction FCI.

All rights strictly reserved. Reproduction or issue to third parties in any form whatever is not permitted without written authority from the proprietor. Property of FCI. Copyright FCI.

**FCI**



CODE	DIM "M" MATING LENGTH	CONTACT TYPE
H	.220 [5.59]	SIGNAL
E	.220 [5.59]	SIGNAL
G	.220 [5.59]	SIGNAL
F	.220 [5.59]	SIGNAL
PA	N/A [N/A]	POWER
R	.270 [6.86]	SIGNAL
T	.270 [6.86]	SIGNAL
S	.270 [6.86]	SIGNAL

mat'l code				SEE NOTE 2		tolerances unless otherwise specified		CUSTOMER	
lir	ecn no.	dr	date	linear	.XX±.01/0.X±0.3	COPY		FCI www.fciconnect.com	
A	DG06-0119	JMG	03/20/06	angles	.XXY±.005/0.XX±0.13	projection		title 5P + 24S	
				dr	.XXX±.0020/0.XXX±0.051	INCH/MM		RIGHT ANGLE SOLDER HEADER	
				enr	JMG 03/20/06	scale		product family PwrBlade code 213	
				chr	SLUO 03/20/06	1:1		size dwg no 51732-030 sheet 1 of 4	
				appd	BEER FU 03/20/06				
					JOSEPH HSIA 03/20/06				
sheet index	revision sheet	A	A	A	A				
		1	2	3	4				

CUSTOMER		FCI		www.fciconnect.com	
COPY		projection		title 5P + 24S	
INCH/MM		scale		product family PwrBlade code 213	
1:1				size dwg no 51732-030 sheet 1 of 4	

1 | 2

3 |

4

Pro/E

**PDM: Rev: A**

STAT **US: Released**

Printed: Dec 20, 2010

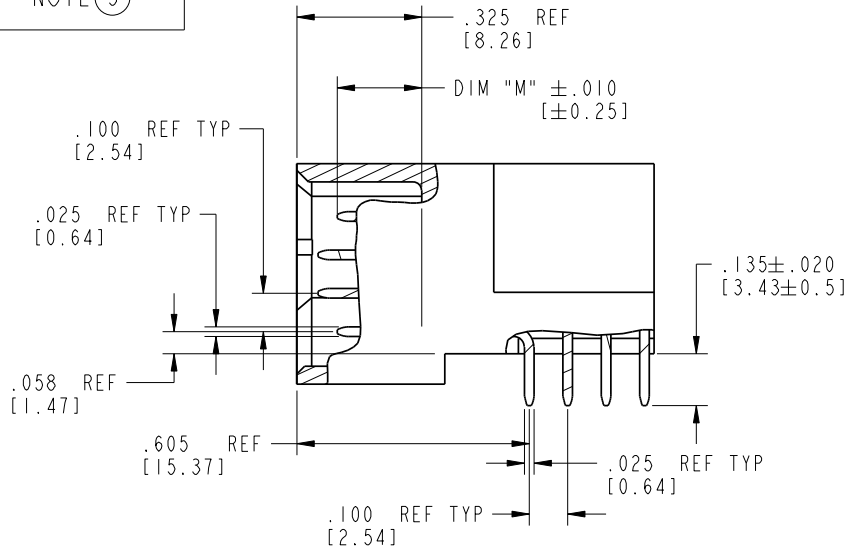
Tous droits strictement réservés. Reproduction ou communication o des liers interdite sous quelque forme que ce soit sans autorisation écrite du propriétaire. Propriété de c FCI. Droits de reproduction FCI.

All rights strictly reserved. Reproduction or issue to third parties in any form whatever is not permitted without written authority from the proprietor. Property of FCI. Copyright FCI.

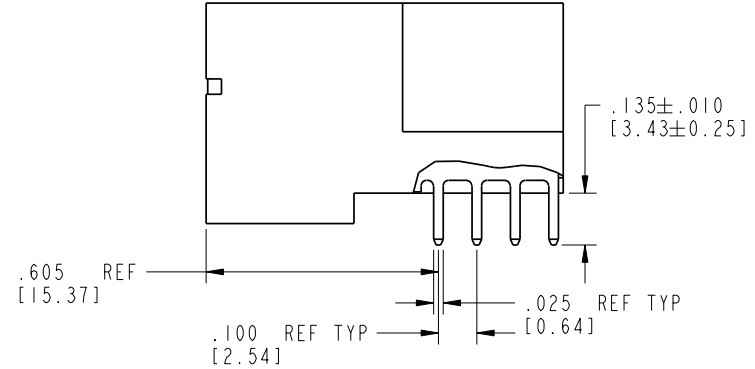
**FCI**

PRODUCT NUMBER

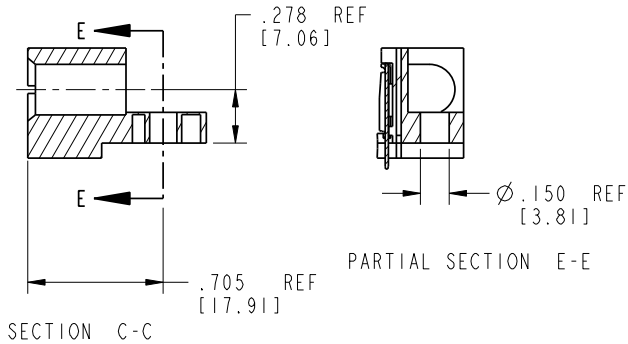
51732-030  
NOTE (3)



BROKEN-OUT SECTION A-A  
SCALE 2:1



BROKEN-OUT SECTION B-B  
SCALE 2:1



SECTION C-C

PARTIAL SECTION E-E

mat'l code		SEE NOTE 2		tolerances unless otherwise specified		CUSTOMER		<b>FCI</b>		www.fciconnect.com			
lir	ecn no.	dr	date	linear	.XX±.01/0.X±0.3	projection	COPY	title		5P + 24S			
A					.XX±.005/0.XX±0.13			RIGHT ANGLE SOLDER HEADER		product family			
				angles	.XXX±.0020/0.XXX±0.051			PwrBlade		code		213	
				dr	JMG 03/20/06			size		dwg no			
				enrg	SLUO 03/20/06			A		51732-030		sheet	2 of 4
				chr	BEER FU 03/20/06								
				appd	JOSEPH HSIA 03/20/06								
sheet index	revision sheet												

Pro/E

**PDM: Rev: A**

STAT **US: Released**

Printed: Dec 20, 2010

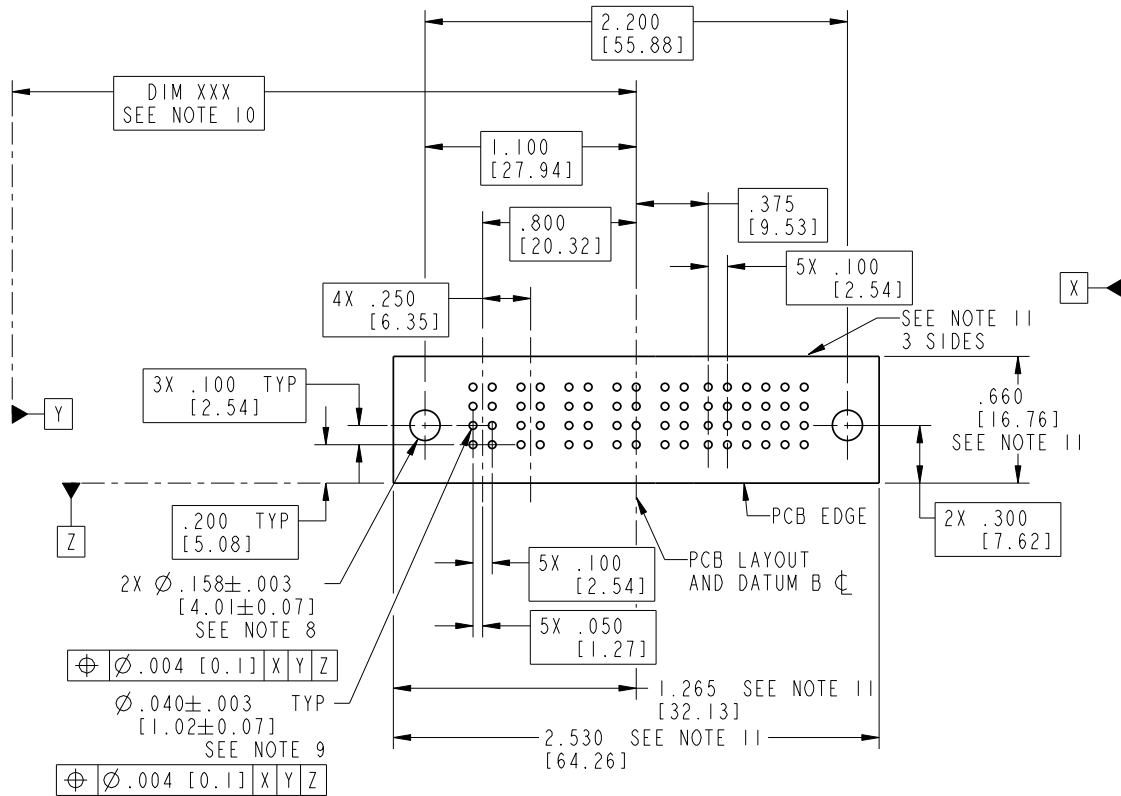
Tous droits strictement réservés. Reproduction ou communication o des liers interdite sous quelque forme que ce soit sans autorisation écrite du propriétaire. Propriete de c FCI. Droits de reproduction FCI.

**FCI**

All rights strictly reserved. Reproduction or issue to third parties in any form whatever is not permitted without written authority from the proprietor. Property of FCI. Copyright FCI.

PRODUCT NUMBER

51732-030\_\_  
NOTE ③



RECOMMENDED PCB LAYOUT

mat'l code		SEE NOTE 2		tolerances unless otherwise specified		CUSTOMER		<b>FCI</b>		www.fciconnect.com	
lir	ecn no.	dr	date	linear	.XX ± .01 / 0.X ± 0.3	COPY		projection		title	
A				linear	.XX ± .005 / 0.XX ± 0.13	INCH/MM		FIRST ANGLE		5P + 24S	
				angles	.XXX ± .002 / 0.XXX ± 0.051	scale		product family		code	
				dr	JMG 03/20/06	1:1		PwrBlade		213	
				enrg	SLUO 03/20/06			size		sheet	
				chr	BEER FU 03/20/06			A		3 of 4	
				appd	JOSEPH HSIA 03/20/06			51732-030			
sheet index	revision sheet										

Pro/E

**PDM: Rev: A**

STAT **Released**

Printed: Dec 20, 2010

Tous droits strictement réservés. Reproduction ou communication a des tiers interdite sous quelque forme que ce soit sans autorisation écrite du propriétaire. Propriété de c FCI. Droits de reproduction FCI.

**A**  
**FCI**

All rights strictly reserved. Reproduction or issue to third parties in any form whatever is not permitted without written authority from the proprietor. Property of FCI. Copyright FCI.

**B**

1 | 2

3 |

4

**A**

**B**

**PRODUCT NUMBER**

51732-030\_\_  
NOTE ③

**NOTES:**

1. DIMENSIONS AND TOLERANCES ARE IN ACCORDANCE WITH ASME Y14.5M, 1994 UNLESS OTHERWISE SPECIFIED.

**CONNECTOR NOTES:**

- ② HOUSING MATERIAL: UL 94 V-0 GLASS FILLED HIGH-TEMP THERMOPLASTIC  
POWER CONTACT MATERIAL: COPPER ALLOY  
SIGNAL PIN MATERIAL: COPPER ALLOY
- 3. PLATING:  
51732-030, 51732-030LF PLATING SPEC. WAS SHOWN IN THE PRINT OF 10064183.
- ④ MANUFACTURER'S NAME, P/N, AND DATE CODE TO APPEAR ON THIS SURFACE.
- 5. PRODUCT SPECIFICATION GS-12-149.  
APPLICATION SPECIFICATION BUS-20-067.
- 6. PACKAGED IN TRAYS.

**PCB NOTES:**

- 7. ALL HOLE DIAMETERS ARE FINISHED HOLE SIZE.
- ⑧ MOUNTING HOLES, WHERE APPLICABLE, ARE UNPLATED.
- ⑨  $\varnothing .0453 \pm .0010$  [1.151  $\pm$  0.025] DRILLED HOLES PLATED WITH .0003 [0.008] MIN SnPb OVER .001 [0.03] TO .003 [0.08] Cu PLATING TO ACHIEVE  $\varnothing .040 \pm .003$  [1.02  $\pm$  .07] HOLE.
- ⑩ "DIM XXX" TO BE DETERMINED BY THE CUSTOMER.
- ⑪ CONNECTOR KEEP-OUT ZONE.

mat'l code		SEE NOTE 2		tolerances unless otherwise specified		CUSTOMER		<b>A</b> <b>FCI</b>		www.fciconnect.com	
lir	ecn no.	dr	date	linear	.XX±.01/0.X±0.3	COPY		projection		title	
A					.XXX±.005/0.XX±0.13	⑩		⑩		5P + 24S	
				angles	.XXX±.0020/0.XXX±0.051	INCH/MM		product family		code	
				dr	JMG 03/20/06	scale		PwrBlade		213	
				enrg	SLUO 03/20/06	1:1		size		sheet	
				chr	BEER FU 03/20/06			A		4 of 4	
				appd	JOSEPH HSIA 03/20/06			51732-030			
sheet index	revision sheet										

1 | 2

Pro/E

**PDM: Rev: A**

STAT **US: Released**

code code 22526  
4  
Printed: Dec 20, 2010