

RUGGED HIGH-SPEED STRIPS

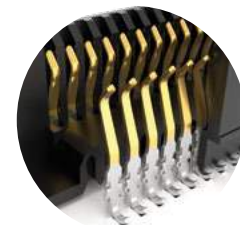


| | |
|------------|------------|
| NRZ | PAM4 |
| 28 Gbps | 56 Gbps |

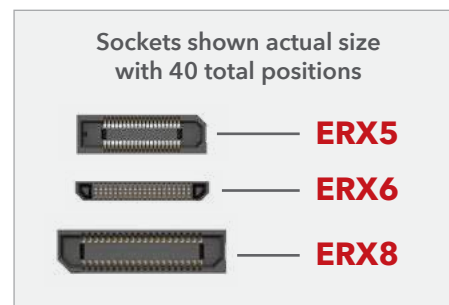
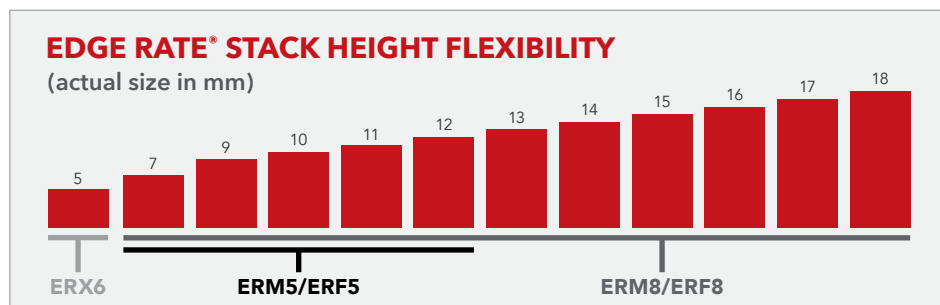
FEATURES & BENEFITS

Edge Rate® rugged high-speed connector strips are designed for high speed, high cycle applications, and enabled by Samtec's signal integrity-optimized Edge Rate® contact system.

- Choice of 0.50 mm, 0.635 mm or 0.80 mm pitch
- 0.50 mm pitch system offers up to 40% PCB space savings vs. 0.80 mm pitch
- 0.635 mm pitch system with extremely slim 2.5 mm body width
- Rugged latching, locking and 360° shielding
- Up to 1.5 mm contact wipe; robust when "zippered" during unmating
- Compatible with UMPT/UMPS for power/signal flexibility



Signal integrity-optimized Edge Rate® contact system reduces broadside coupling



KEY SPECIFICATIONS

| SERIES | PITCH | STACK HEIGHTS | TOTAL PINS / PAIRS | INSULATOR MATERIAL | TERMINAL MATERIAL | PLATING | OPERATING TEMP RANGE | LEAD-FREE SOLDERABLE |
|-------------|----------|---------------|--------------------|--------------------|---|----------------------------------|----------------------|----------------------|
| ERM5 / ERF5 | 0.50 mm | 7-12 mm | 20-150 | Black LCP | Phosphor Bronze or BeCu (ERM5), BeCu (ERF5) | Au or Sn over 50 μ" (1.27 μm) Ni | -55 °C to +125 °C | Yes |
| ERM6 / ERF6 | 0.635 mm | 5 mm | 20-120 | | Copper Alloy | | | |
| ERM8 / ERF8 | 0.80 mm | 7-18 mm | 10-200 | | Phosphor Bronze or BeCu (ERM8), BeCu (ERF8) | | | |

(0.80 mm) .0315" PITCH • RUGGED HIGH-SPEED HEADERS & SOCKETS

| TYPE | POSITIONS PER ROW | LEAD STYLE | PLATING OPTION | DV | OPTIONS | "X"R |
|------|-------------------|------------|----------------|----|---------|------|
|------|-------------------|------------|----------------|----|---------|------|

ERM8
= Header
ERF8
= Socket

-005, -010, -011, -013, -020, -025, -030, -035, -040, -049, -050, -060, -070, -075, -100

(100 Position Only Available with ERM8-09.0 & ERF8-05.0 Lead Styles; -L or -EPG N/A)

SPECIFY LEAD STYLE FROM CHART

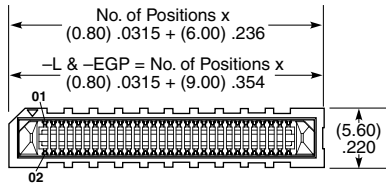
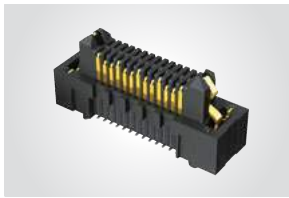
-L
= 10 μ" (0.25 μm)
Gold on contact, Matte Tin on tail
-S
= 30 μ" (0.76 μm)
Gold on contact, Matte Tin on tail

-DS
= Differential Pair (ERM8 -05.0 Lead Style with -010, -013, -025, -049 Positions only) (-P not available)
-L
= Latching (ERM8 -03.0, -05.0 & -09.0 Lead Styles only & -EGP Option not available) (ERF8 -05.0, -07.0 & -09.0 Lead Style only and -L to -EGP Option not available)

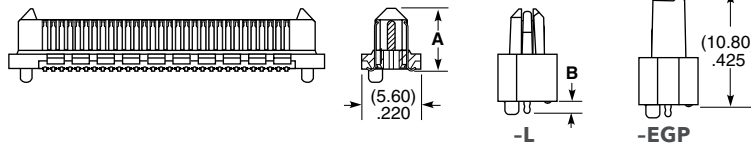
-TR
= Tape & Reel (100 Positions N/A)
-FR
= Full Reel Tape & Reel (must order maximum quantity per reel; contact Samtec for quantity breaks) (100 Positions N/A)

ERM8
Board Mates:
ERF8, ERM8

Cable Mates:
ERCD, ERDP



| ERM8 LEAD STYLE | A | B |
|-----------------|--------------|-------------|
| -02.0 | (5.97) .235 | N/A |
| -03.0 | (6.97) .274 | (1.60) .063 |
| -05.0 | (8.91) .351 | (1.17) .046 |
| -08.0 | (11.91) .469 | N/A |
| -09.0 | (12.91) .508 | (1.60) .063 |

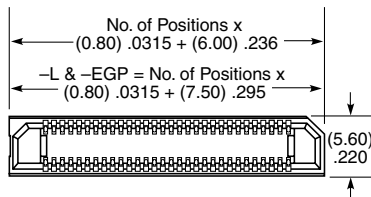
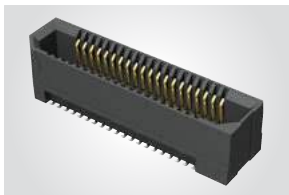


-EGP
= Extended Guide Post (ERM8 -05.0 & ERF8 -07.0 Lead Style Only & -L Option not available)
-DSP
= Differential Pair with Extended Guide Post (ERM8 -05.0 Lead Style with -013 and -025 Positions only)
-K
= Polyimide Film Pick & Place Pad (-02.0 Lead Style N/A)
-P
= Pick & Place Pad (ERM8 and -02.0 & -05.0 Lead Styles only) (-DS not available)

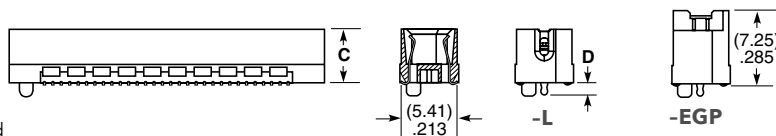
View complete specifications at: samtec.com?ERM8

ERF8
Board Mates:
ERM8

ERF8
Cable Mates:
ERCD, ERDP



| ERF8 LEAD STYLE | C | D |
|-----------------|-------------|-------------|
| -05.0 | (5.34) .210 | (1.60) .063 |
| -07.0 | (7.25) .285 | (1.17) .046 |
| -09.0 | (9.34) .367 | (1.60) .063 |



| ERM8 LEAD STYLE | MATED HEIGHT* | | |
|-----------------|-----------------------|--------------|--------------|
| | ERF8 LEAD STYLE -05.0 | -07.0 | -09.0 |
| -02.0 | (7.00) .276 | (9.00) .354 | (11.00) .433 |
| -03.0 | (8.00) .315 | (10.00) .394 | (12.00) .472 |
| -05.0 | (10.00) .394 | (12.00) .472 | (14.00) .551 |
| -08.0 | (13.00) .512 | (15.00) .591 | (17.00) .669 |
| -09.0 | (14.00) .551 | (16.00) .629 | (18.00) .709 |

*Processing conditions will affect mated height.

Note:
Some lengths, styles and options are non-standard, non-returnable.

View complete specifications at: samtec.com?ERF8