

Electronic housing - CM125-LG/H 35/BO/DB/GH BK - 2941840

Please be informed that the data shown in this PDF Document is generated from our Online Catalog. Please find the complete data in the user's documentation. Our General Terms of Use for Downloads are valid (<http://phoenixcontact.com/download>)



Electronic module, for PCB insertion, with a 35 mm tall covering hood plus spacer pins


The illustration shows versions CM 125-LG/H 35/BO/DB/GH

Product Features

- ✓ Easy snap-on mounting on symmetrical DIN rails according to EN 60715
- ✓ Rugged housing technology
- ✓ Flexible accommodation of different connection elements (from high-position connectors to electronic PCBs)
- ✓ Shock and contamination-proof accommodation of electronic components



Key commercial data

Packing unit	1 pc
GTIN	 4 017918 126377
Weight per Piece (excluding packing)	375.94 GRM
Custom tariff number	85369010
Country of origin	Germany

Technical data

General

Housing type	Complete housing
Housing material	Polycarbonate fiber reinforced
Color	black

Ambient conditions

Ambient temperature (operation)	-40 °C ... 125 °C
---------------------------------	-------------------

Dimensions

Electronic housing - CM125-LG/H 35/BO/DB/GH BK - 2941840

Technical data

Dimensions

Length	102 mm
Constructional height	138 mm
Width	125 mm

Technical data

Inflammability class according to UL 94	V0
Power dissipation at 20°C in the horizontal mounting position	84.4 W 109.7 W

Classifications

eCl@ss

eCl@ss 4.0	27180401
eCl@ss 4.1	27180401
eCl@ss 5.0	27180506
eCl@ss 5.1	27180506
eCl@ss 6.0	27180802
eCl@ss 7.0	27182702
eCl@ss 8.0	27182702

ETIM

ETIM 2.0	EC001031
ETIM 3.0	EC001031
ETIM 4.0	EC001031
ETIM 5.0	EC001031

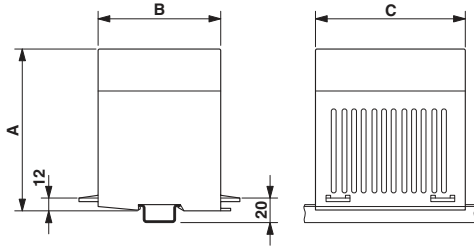
UNSPSC

UNSPSC 6.01	31261501
UNSPSC 7.0901	31261501
UNSPSC 11	31261501
UNSPSC 12.01	31261501
UNSPSC 13.2	31261501

Drawings

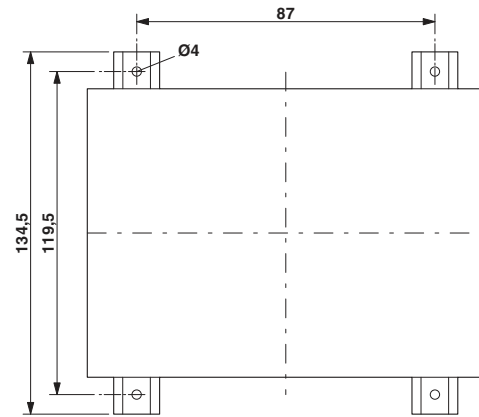
Electronic housing - CM125-LG/H 35/BO/DB/GH BK - 2941840

Dimensioned drawing

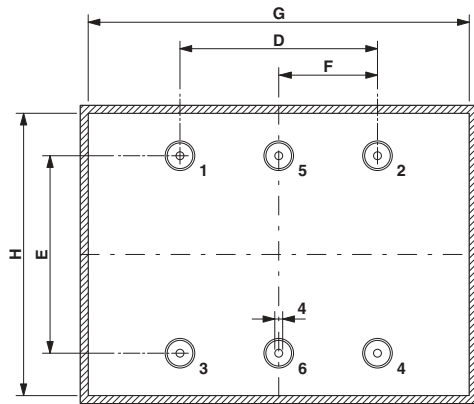


Dimension A: 138 mm; dimension B: 102 mm; dimension C: 125 mm

Dimensioned drawing

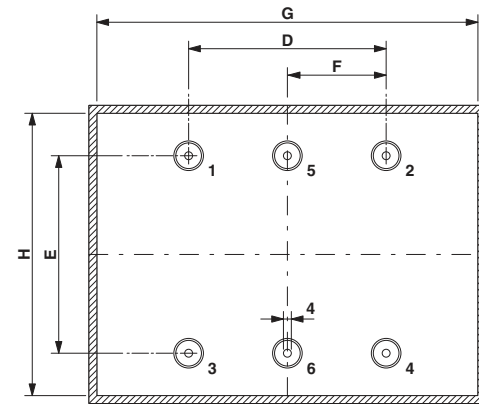


Dimensioned drawing



Dimension D: 87.5 mm; E: 70.0 mm; G: 119.0 mm; H: 96.0 mm
Spacer pins 1 - 4: Height 23 mm; ϕ 4 mm

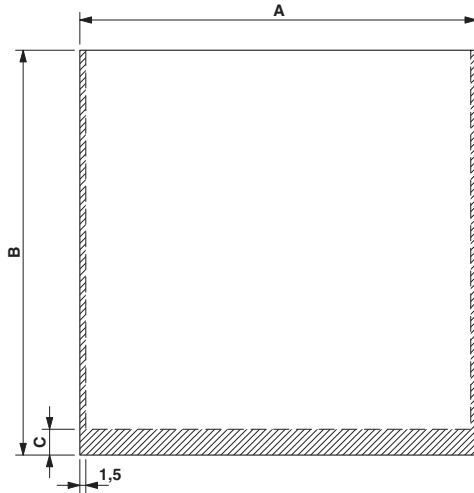
Dimensioned drawing



Dimension D: 87.5 mm; E: 70.0 mm; G: 119.0 mm; H: 96.0 mm
Spacer pins 1 - 4: Height 23 mm; ϕ 4 mm

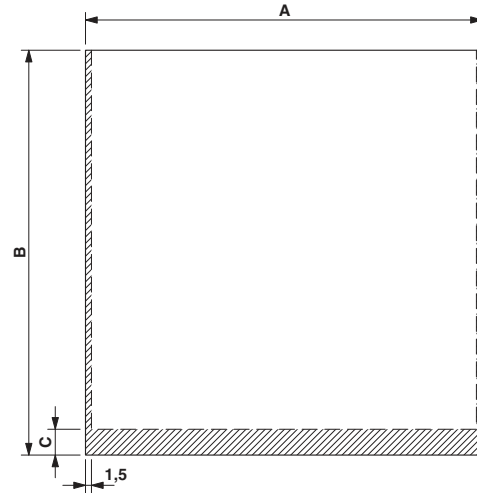
Electronic housing - CM125-LG/H 35/BO/DB/GH BK - 2941840

Dimensioned drawing



PCB 1, 7: Dimension A: 122.5 mm; B: 124.8 mm; C: 0 mm
PCB 8, 13: Dimension A: 100.0 mm; B: 124.8 mm; C: 6.5 mm
PCB 9-12: Dimension A: 100.0 mm; B: 124.8 mm; C: 0 mm

Dimensioned drawing



PCB 1, 7: Dimension A: 122.5 mm; B: 124.8 mm; C: 0 mm
PCB 8, 13: Dimension A: 100.0 mm; B: 124.8 mm; C: 6.5 mm
PCB 9-12: Dimension A: 100.0 mm; B: 124.8 mm; C: 0 mm

Electronic housing - CM125-LG/H 35/BO/DB/GH BK - 2941840

Schematic diagram

