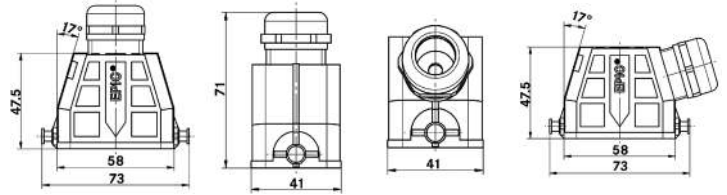
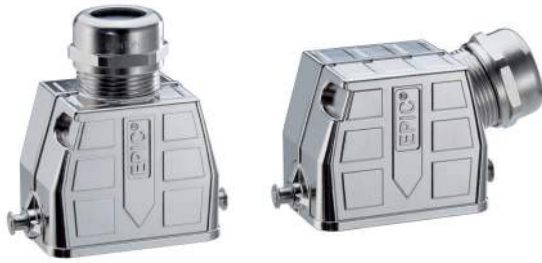


EPIC® ULTRA HB 6 hood

Hood with single lever bolts



all dimensions are in mm

Technical data

IP Protection class: UL 50E Type 4, 4X, 12 IP65

Complete the installation

 ULTRA HB covers page 429

Approvals

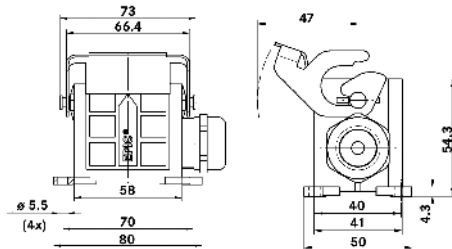


Part number	Brush included	Cable OD mm	Min. OD for braided shield mm
Top entry			
70250200	no	6 - 13	—
70250201	no	9 - 17	—
70250202	yes	9 - 17	6
Side entry			
70250203	no	6 - 13	—
70250204	no	9 - 17	—
70250205	yes	9 - 17	6

not for use with inserts requiring high profile housing

EPIC® ULTRA HB 6 surface mount base

Surface mount base with single lever



all dimensions are in mm

Technical data

IP Protection class: UL 50E Type 4, 4X, 12 IP65

Complete the installation

 ULTRA HB covers page 429

Approvals



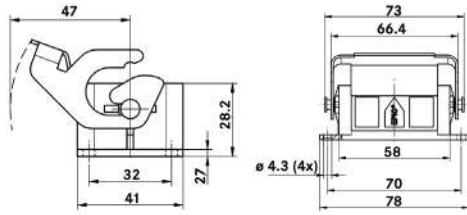
Part number	Brush included	Cable OD mm	Min. OD for braided shield mm
70250207	no	6 - 13	—
70250208	no	9 - 17	—
70250209	yes	9 - 17	6

not for use with inserts requiring high profile housing

If not otherwise specified, all values relating to the product are nominal values. Photographs are not to scale and are not true representations of the products in question.

EPIC® ULTRA HB 6 panel mount base

Panel mount base with single lever



all dimensions are in mm

Technical data

IP Protection class: UL 50E Type 4, 4X, 12
IP65

Complete the installation



ULTRA HB covers
page 429

Approvals



Dust cover included	Part number
no	70250206