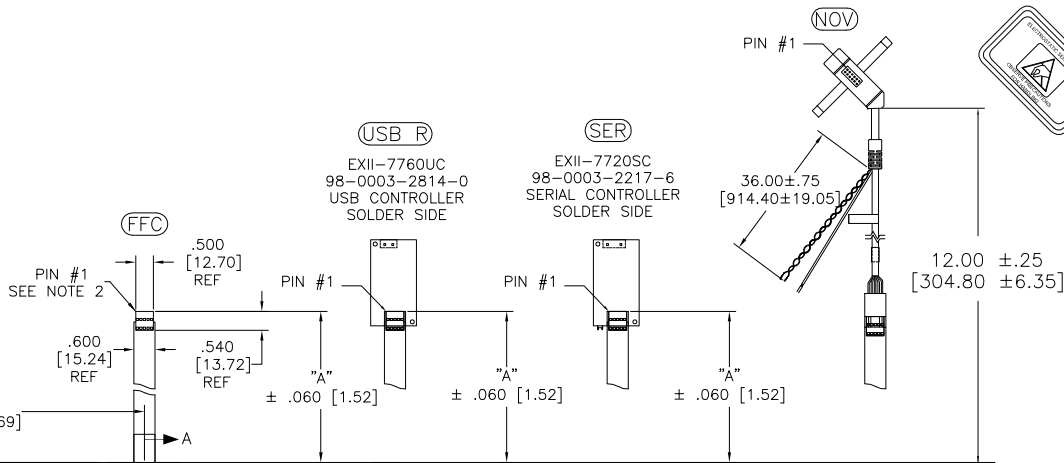
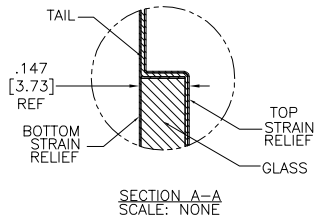
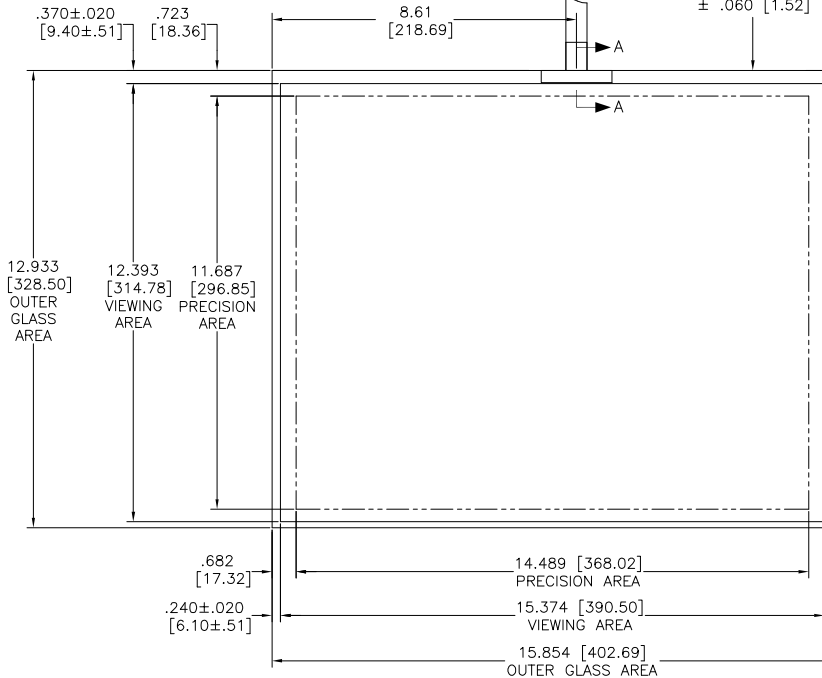


OGA DIAGONAL: 20.46 [519.68]
 VA DIAGONAL: 19.75 [501.58]
 PA DIAGONAL: 18.61 [472.82]

TOP LEVEL NUMBER	US NUMBER	TYPE	DIM "A" (TOTAL GLASS TO CONNECTOR)	A/G FINISH	PROD SPEC
17-8511-203	98-0003-2609-4	FFC	4.27" [108.46]	AG500	23655
17-8511-221	98-0003-2613-6	SER	4.27" [108.46]	AG500	23655
17-8511-206	98-0003-2611-0	NOV	SEE DWG	AG500	23655
17-8511-218	98-0003-3156-5	USB R	4.27" [108.46]	AG500	23655
17-8511-205	98-0003-2610-2	FFC	8.00" [203.20]	AG500	23655
17-8511-226	98-0003-3157-3	USB R	8.00" [203.20]	AG500	23655
17-8511-227	98-0003-2615-1	SER	8.00" [203.20]	AG500	23655



.147 ± .020 [3.73 ± .51]
 TOTAL THICKNESS
 OF GLASS, CABLE
 AND STRAIN RELIEF



PINOUT	
1	LL
2	UL
3	SHLD
4	UR
5	LR

REV	CHANGE NOTICE	DATE	DRW
H	REVISED PER CO 036256	4/13	SB
G	REVISED PER CO 033533	2/12	SB
F	REVISED PER CO 033457	9/11	SB

NOTES:

1. WEIGHT OF GLASS IN GRAMS: 1008 ± 10%
2. NICOMATIC HOUSING P/N: OLO5
 NICOMATIC RECEPTACLES (PINS) MATTE TIN PLATED P/N: 14106-12
 HOUSING ORIENTED WITH LATCH DOWN

UNITS	INCHES [MM]
TOLERANCES UNLESS OTHERWISE SPECIFIED	
.X	± .03 [.76]
.XX	± .015 [.38]
.XXX	± .01 [.25]
ANGLES	± 1°

3M 3M TOUCH SYSTEMS
 METHUEN, MA
 USA
 © COPYRIGHT 2004
 THIS DOCUMENT IS COPYRIGHTED PROPERTY OF THE 3M COMPANY AND MAY NOT BE REPRODUCED WITHOUT 3M WRITTEN PERMISSION OR USED OR DISCLOSED FOR OTHER THAN 3M AUTHORIZED PURPOSES.

TITLE		MARKETING DRAWING	
SCT32NN 19.75"			
DRAWN	K CROWLEY	9/05	
CAD FORMAT	AUTOCAD	SHEET	1 OF 1
SIZE	C	DOCUMENT NO.	28382-MKT
REV	H		