

4

3

2

1

THIS DRAWING IS UNPUBLISHED.

RELEASED FOR PUBLICATION

© COPYRIGHT

ALL RIGHTS RESERVED.

LOC DIST

REVISIONS

P	LTR	DESCRIPTION	DATE	DWN	APVD
	B1	ECR-13-003195	20FEB2013	XZ	SX

REPLACED BY OCEAN STYLE APPLICATOR PART NUMBER 2151191-6

FOR REPLACEMENT PARTS FOR APPLICATOR 1911011 REFER TO ADDITIONAL PAGE(S). SPARE PARTS KIT (IF LISTED) WILL REMAIN AVAILABLE.

THE REPLACEMENT OCEAN STYLE APPLICATOR HAS THE SAME TERMINATOR/PRESS INTERFACE AS APPLICATOR 1911011

Dimensioning and tolerancing per ASME Y14.5M-2009


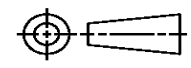
B

A

Dimensioning and tolerancing per ASME Y14.5M-2009

B

A

THIS DRAWING IS A CONTROLLED DOCUMENT.		DWN X. ZHAO	 TE Connectivity			
DIMENSIONS:		CHK S. XI				
TOLERANCES UNLESS OTHERWISE SPECIFIED:		APVD S. XI	NAME			
		PRODUCT SPEC	SIDE FEED SYSTEM III APPLICATOR			
		APPLICATION SPEC				
MATERIAL	FINISH	WEIGHT	SIZE	CAGE CODE	DRAWING NO	RESTRICTED TO
			A3		©- 1911011	
			SCALE	SHEET 1 OF 2	REV B1	

Dimensioning and tolerancing per ASME Y14.5M-2009

PART NUMBER	REV	DESCRIPTION	PROGRAMMED MEMORY CHIP
1911011-1	B	CUTS CARRIER	8-1911011-1
1911011-6	B	CONTINUOUS CARRIER	8-1911011-6
7-1911011-1	B	-1 AND SPARE PARTS	9-1911011-1
7-1911011-6	B	-6 AND SPARE PARTS	9-1911011-6
7-1911011-7	B	SPARE PARTS KIT	-

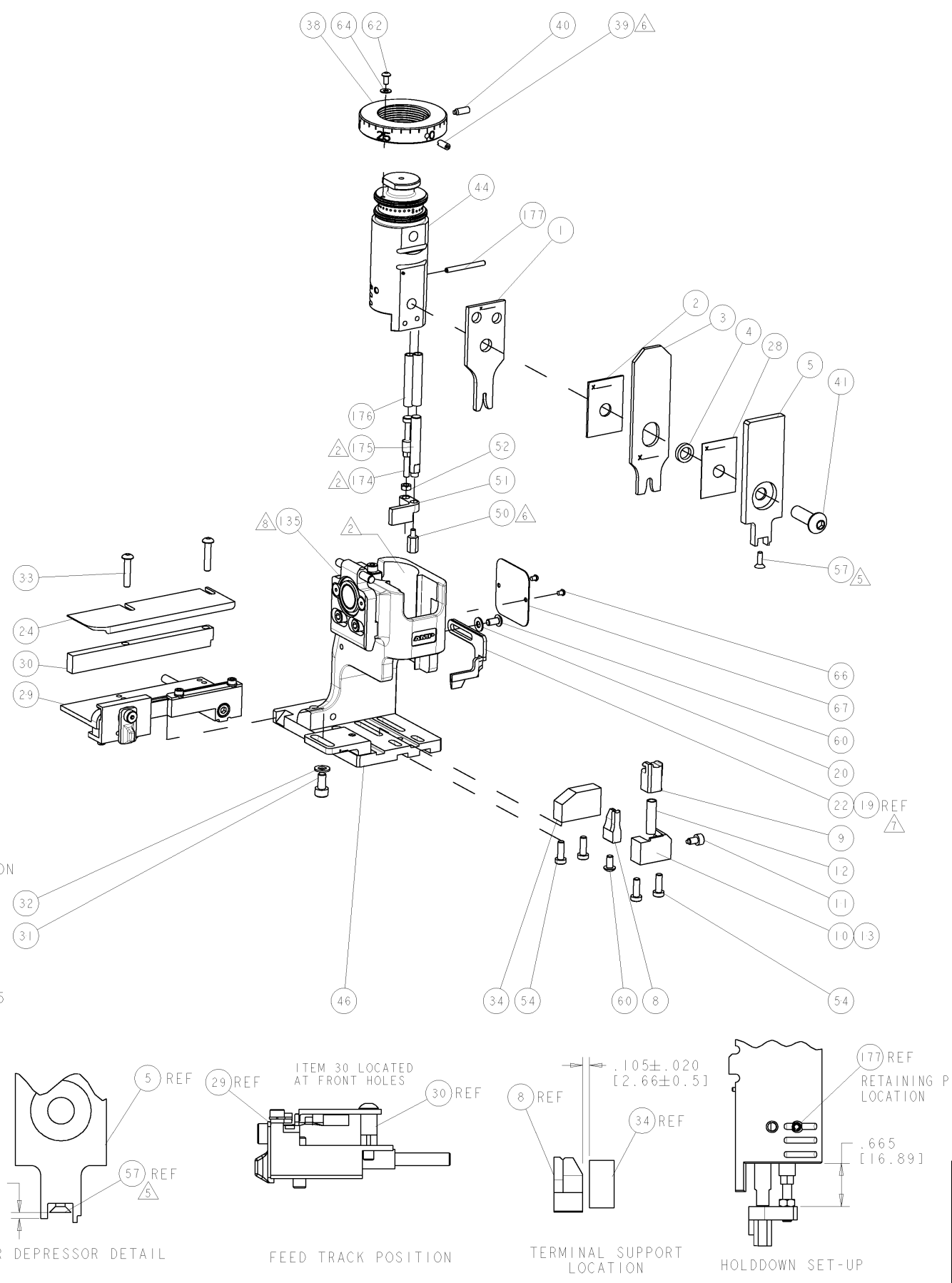
APPLICATOR DATA		
CRIMP	SIZE	TYPE
WIRE	2.03mm [.080]	F
INSUL	4.06mm [.160]	O
APPL INSTRUCTIONS 408-10135		

TERMINAL DATA: TE TERMINAL	TYCO ELECTRONICS CRIMP SPEC
TERMINAL NAME: JUNIOR POWER TIMER CONTACT	
WIRE STRIP LENGTH 4.4-5.0mm [.173-.197]	INSULATION DIAMETER RANGE 1.20-2.99mm [.047-.118]

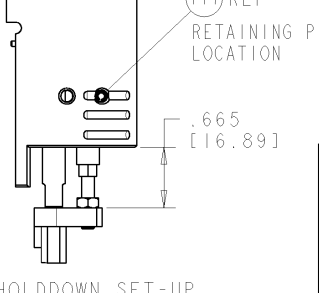
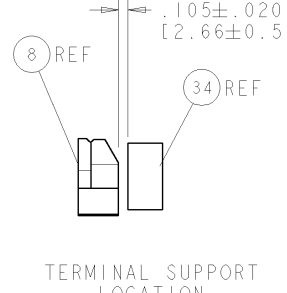
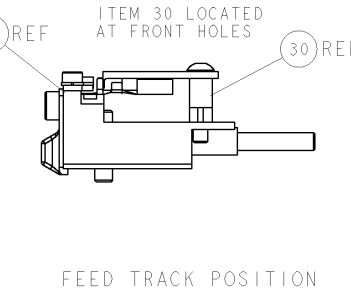
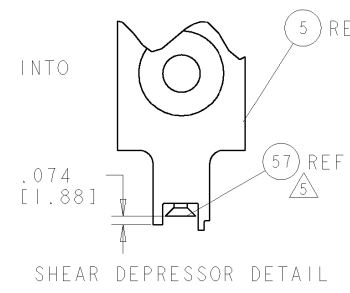
TE TERMINAL	TE TERMINAL	TE SEAL	TE SEAL
929939-3	927770-3	828904	828905
929939-1	927770-6	828904	828905
929939-6	927770-8	828904	828905
1-929939-1	1-927770-1	828904	828905
2-929939-1	2-927770-1	828904	828905
927770-1	929280-1	828904	828905

WIRE SIZE	CRIMP HEIGHT
mm [INCH]	mm [INCH]
1mm2	1.36±.05 [.054±.002]
0.85mm2	1.32±.05 [.052±.002]
0.75mm2	1.27±.05 [.050±.002]
0.5mm2	1.18±.05 [.046±.002]

REV	DESCRIPTION	DATE	BY	APPV
A1	ECR-07-004822	01MAR2007	RD	ND
B	ECR-07-011464	22MAY2007	GH	ND



REV	DESCRIPTION	DATE	BY	APPV
-	1 1 1 1	1-993111-6	PIN, SLOTTED SPRING 3.0 X 30.0	177
-	2 2 2 2	3-22280-7	SPRING, COMPRESSION	176
-	1 1 1 1	1752353-1	GUIDE PIN, HOLDDOWN	175
-	1 1 1 1	1901680-1	GUIDE PIN, HOLDDOWN	174
-	REF REF REF REF	SEE TABLE	MEMORY CHIP, PROGRAMMED	135
-	1 1 1 1	1633565-1	DOCUMENTATION PACKAGE	71
-	1 1 1 1	1901048-1	TAG, IDENTIFICATION	67
-	2 2 2 2	21017-1	SCREW, DRIVE	66
-	1 1 1 1	18028-1	WASHER, FLAT, REG M3	64
-	1 1 1 1	1655785-9	SCR, BTN SKT HD CAP (M3 X 6)	62
-	2 2 2 2	1655785-1	SCR, BTN SKT HD CAP (M4 X 8)	60
-	1 1 1 1	985575-3	SCR, FLT SKT HD CAP M3 X 10.0	57
-	4 4 4 4	1655783-3	SCR, CAP, SOC HD, LOW HEAD, M4 X 12	54
-	1 1 1 1	1-18030-0	NUT, HEX, REG M3.5	52
-	1 1 1 1	1901681-1	HOLDDOWN, TERMINAL	51
-	1 1 1 1	2-1752354-5	STANDOFF, HOLD-DOWN	50
-	1 1 1 1	1752300-1	SF SYSTEM III APPLICATOR	46
-	1 1 1 1	1752308-1	RAM	44
-	1 1 1 1	2-1655785-3	SCR, BTN SKT HD CAP (M8 X 25)	41
-	1 1 1 1	993002-4	SCREW, SET, SFT TIP	40
-	1 1 1 1	1962043-1	PLUNGER, BALL, METRIC	39
-	1 1 1 1	1752309-1	RING, INSULATION CRIMP	38
-	1 1 1 1	1-1752356-3	SUPPORT, TERMINAL	34
-	2 2 2 2	3-1655785-3	SCR, BTN SKT HD CAP (M4 X 20)	33
-	1 1 1 1	18028-3	WASHER, FLAT, REG M5	32
-	1 1 1 1	5-1655316-3	SCR, SKT HD CAP, M5 X 10.0	31
-	1 1 1 1	1-1320908-5	SPACER, STRIP GUIDE	30
-	1 1 1 1	1901087-1	ASSEMBLY, STRIP GUIDE	29
-	1 1 1 1	455888-3	SPACER, CRIMPER	28
-	1 1 1 1	1320928-1	PLATE, STRIP GUIDE	24
-	1 1 1 1	1976045-1	STRIPPER	22
-	1 1 1 1	18028-2	WASHER, FLAT, REG M4	20
-	REF REF REF REF	1752311-1	STRIPPER	19
-	1 1 1 1	1338684-2	SHEAR HOLDER, FRONT	13
-	1 1 1 1	3-22280-3	SPRING, COMPRESSION	12
-	1 1 1 1	356885-5	STOP, SHEAR	11
-	1 1 1 1	1-1320921-0	SHEAR HOLDER, FRONT, CUT	10
-	1 1 1 1	318707-1	FLOATING SHEAR, FRONT	9
-	1 2 2 1	9-1333204-9	ANVIL, COMBINATION	8
-	1 1 1 1	1338680-1	DEPRESSOR, SHEAR	5
-	1 1 1 1	3-238011-3	BLOCK, CRIMPER SPACER	4
-	1 2 2 1	8-683454-9	CRIMPER, INSULATION O	3
-	1 1 1 1	1-455888-1	SPACER, CRIMPER	2
-	1 2 2 1	1-456405-5	CRIMPER, WIRE PREMIUM	1
-77	-76 -71 -6 -1	PART NO	DESCRIPTION	ITEM NO



DIMENSIONS: 1 INCHES (mm)		TOLERANCES UNLESS OTHERWISE SPECIFIED:		OWN: D Wright 15DEC2006		DRAWN: N. DEMING 15DEC2006		Tyco Electronics Harrisburg, PA 17105-3608	
0 PLC	±	1 PLC	±	2 PLC	±	3 PLC	±	4 PLC	±
MATERIAL:				FINISH:				APPLICATOR SPEC: SEE TABLE	
CUSTOMER DRAWING				WEIGHT:				SCALE: 3:5	
PART NO: 1911011				DESCRIPTION: SIDE FEED SYSTEM III APPLICATOR				SHEET 1 OF 1	