

Test Procedure for the NCP58302DSADGEVB Evaluation Board

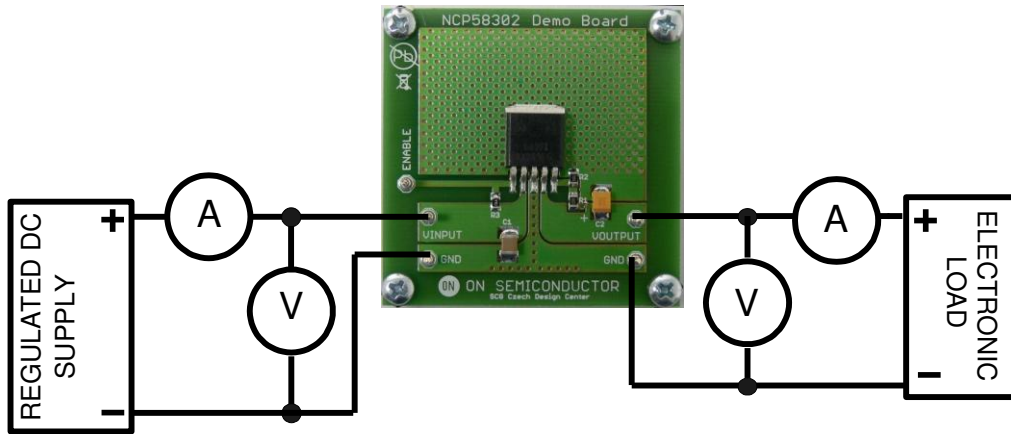


Figure 1: Test Setup

Test Procedure:

1. Connect the test setup as shown in Figure 1.
2. Apply an input voltage, $V_{in} = 3.5 \text{ V dc}$
3. Apply $I_{out} = 10 \text{ mA}$ load.
4. Check that V_{out} is 2.5 V
5. Increase I_{out} load to 3.0 A
6. Check that V_{out} is 2.5 V
7. Power down the load
8. Power down V_{in}
9. End of test