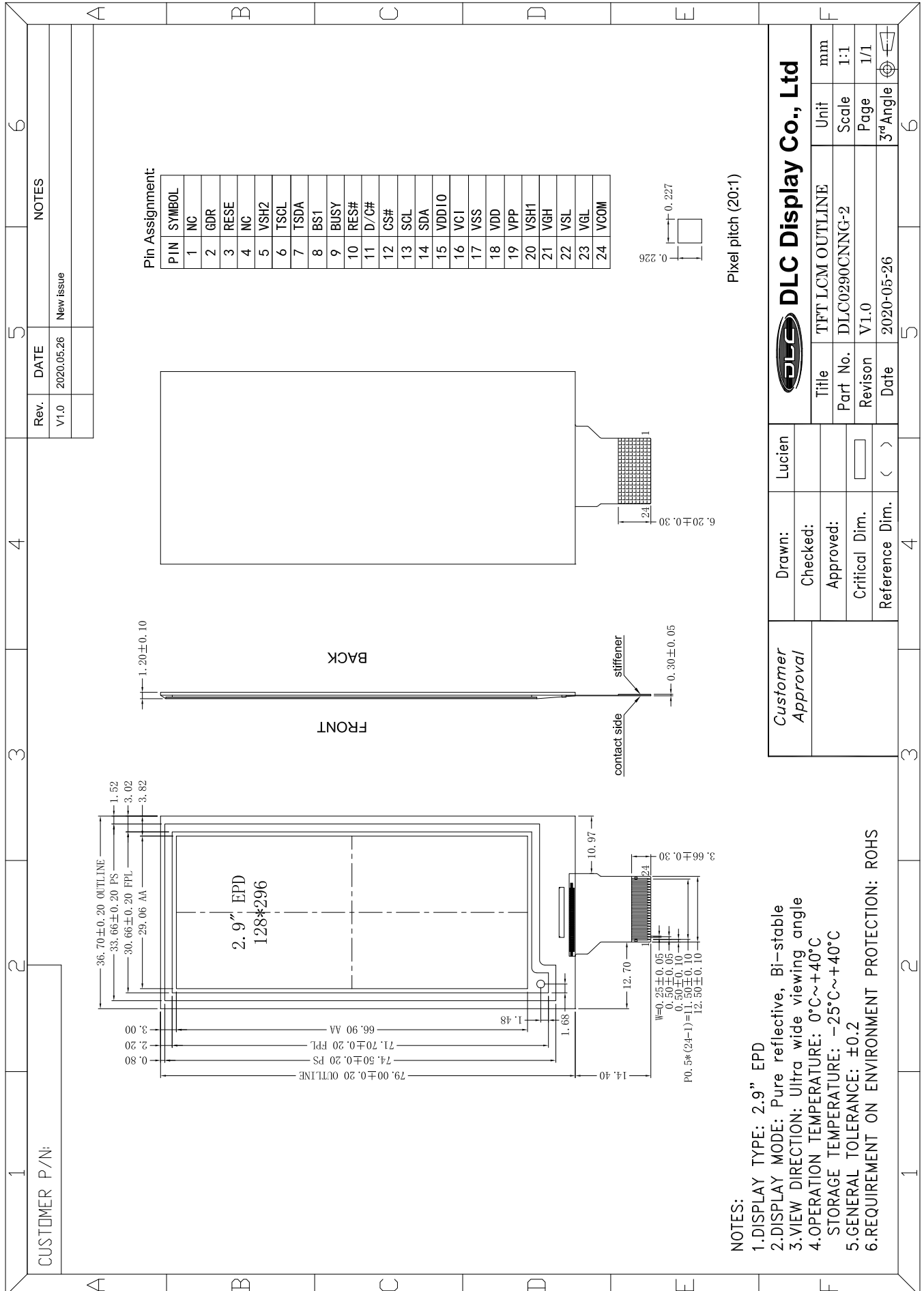




Outline Drawing



- NOTES:**
- 1.DISPLAY TYPE: 2.9" EPD
 - 2.DISPLAY MODE: Pure reflective, Bi-stable
 - 3.VIEW DIRECTION: Ultra wide viewing angle
 - 4.OPERATION TEMPERATURE: 0°C~+40°C
STORAGE TEMPERATURE: -25°C~+40°C
 - 5.GENERAL TOLERANCE: ±0.2
 - 6.REQUIREMENT ON ENVIRONMENT PROTECTION: ROHS