

1

2

3

4

A

A

REFERENCE FOR REEL ACCORDING TO FEEDING DIRECTION			
GAUGE	REEL OF 400 FEMALE CONTACTS	GAUGE	REEL OF 400 PIN CONTACTS
# 24-28	86563004064LF	# 24-28	86563003064LF
# 20-24	86563006064LF	# 20-24	86563005064LF
# 24-28	86563004065LF	# 24-28	86563003065LF
# 20-24	86563006065LF	# 20-24	86563005065LF
# 20-24	86563006067LF	# 20-24	86563005067LF

B

B

Amphenol
FCi

C

C

NOTE : ROHS INFORMATIONS
 The LF products meet European union directives and other country regulations as described in GS-47-0004
 Terminations plating spec : 1.3um Nickel min + 1.3um Sn min
 Packaging Spec : see GS-14-920

© 2016 AFCI

D

D

spec ref		dr	P-Mathew Nebu	2011/05/17	projection	MM	size	A3	scale	10:1
tolerance std		eng	Paul Mithun	2019/03/18		← →	ecn no		ELX-I-32091-1	
ISO 406 ISO 1101		chr	-	-			rel level		Released	
surface	linear	0.X	±0.3	Amphenol FCi	CRIMP PIN & SOCKET		dwg no	C01-8656-0426		rev
		0.XX	±0.1							
		0.XXX	±0.05							
ISO 1302	angular	0°	±2°	cat. no.	-	Product - Customer Drw		sheet 1 of 2		

2

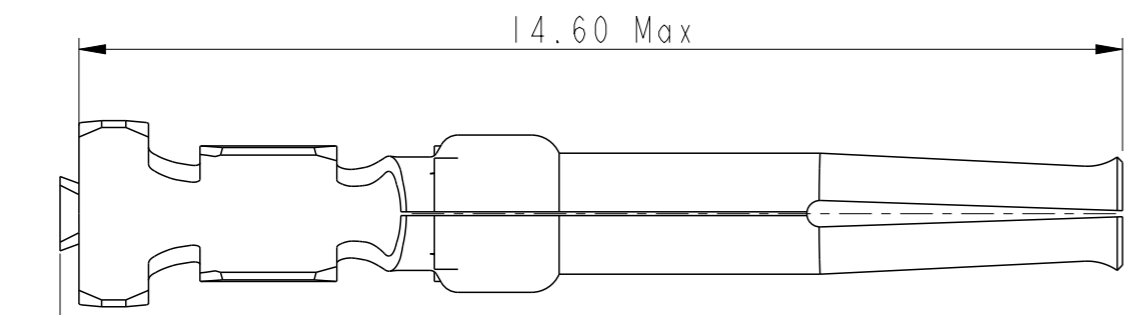
3

PDS: Rev :K

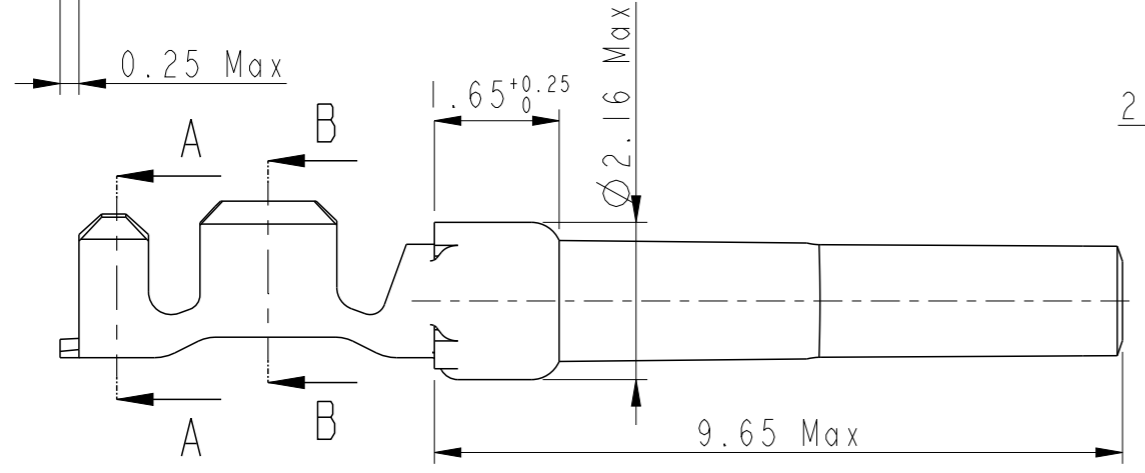
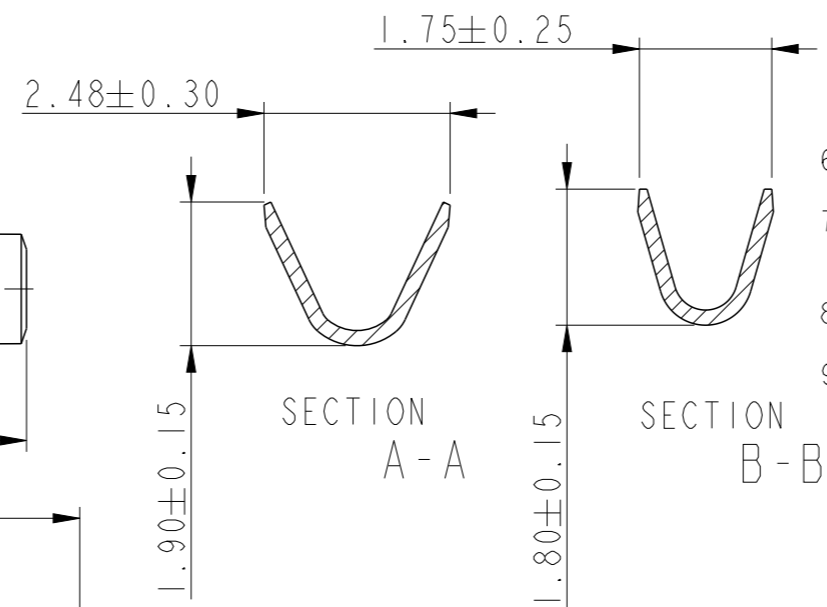
STATUS:Released

Printed: Mar 19, 2019

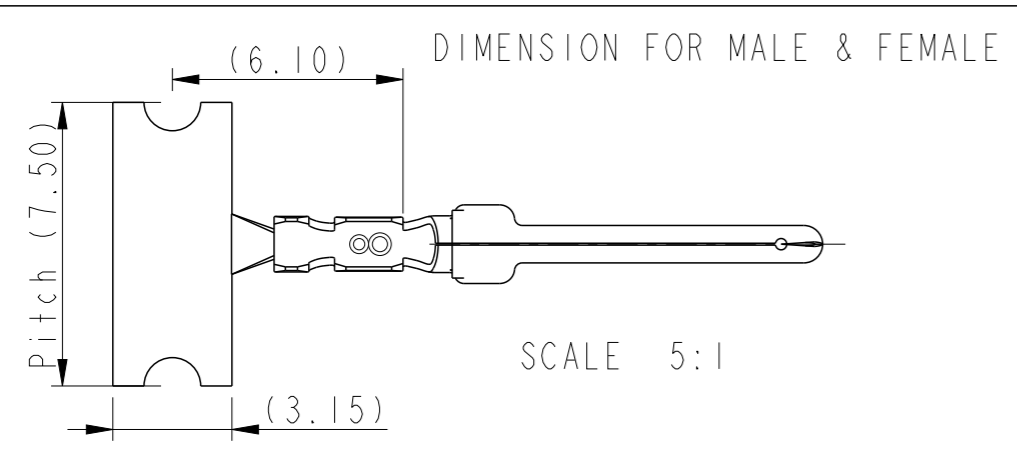
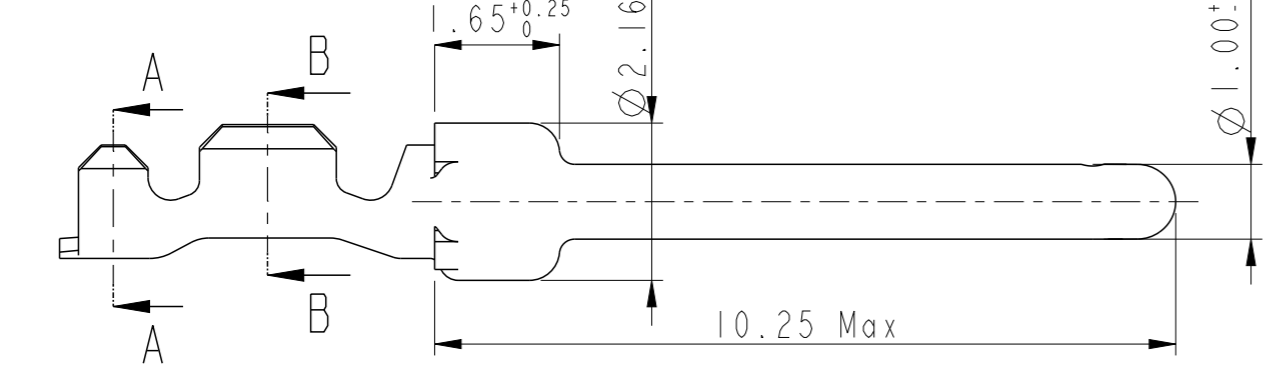
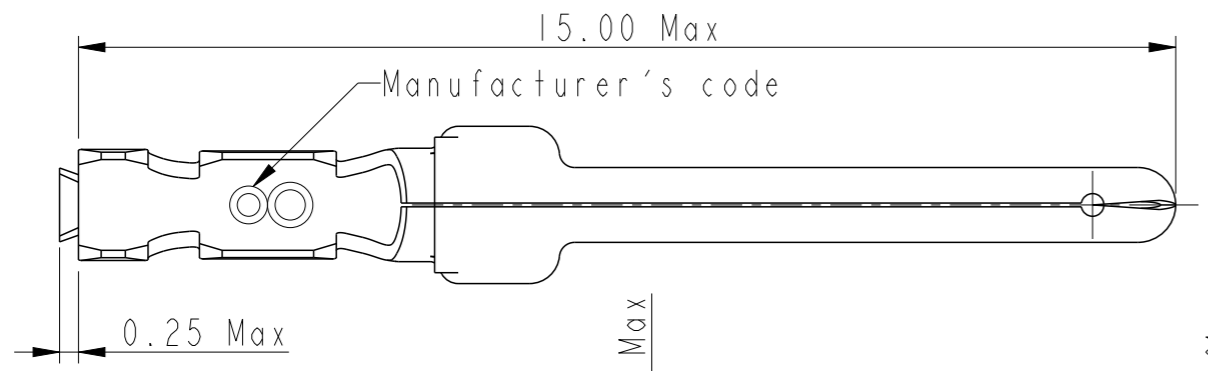
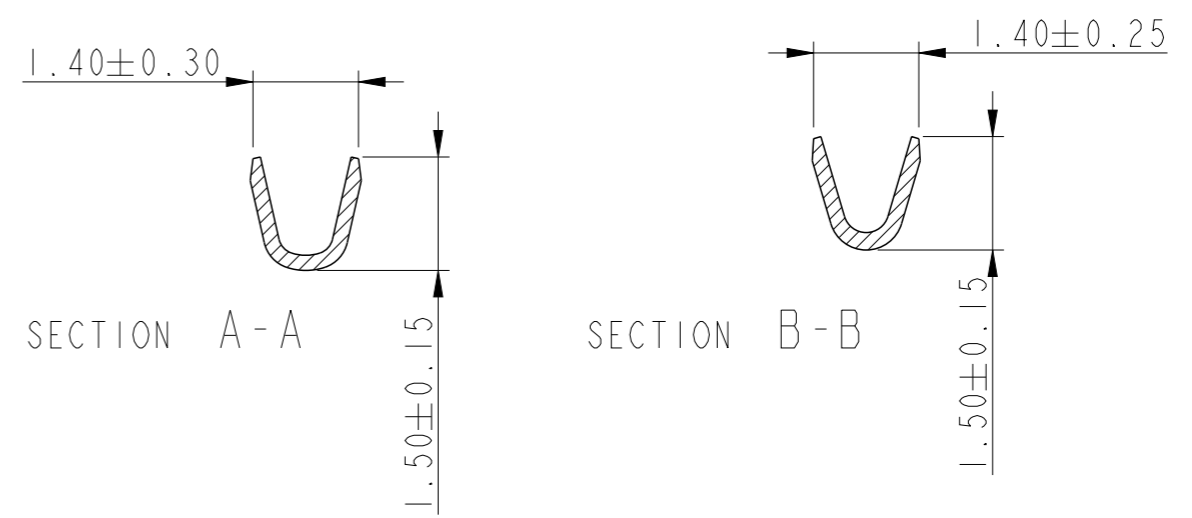
- NOTES
- 1- Material : Phosphor bronze, thickness 0.20
 - 2 -Finish on contact area : termination 064:gold flash
termination 065:076μ Au / GXT
termination 067:0,4μ Au / GXT
finish on termination : Tin over Nickel
 - 3 -Wire range :20 to 28 AWG(see ref sheet 1/2)
 - 4 -Max outer dia of wire insulator:
-1.52 mm max for contact #20-24
-1.02 mm max for contact #24-28
 - 5 -Current carrying capacity per contact:
5 Amps max when crimped to #20 AWG
5 Amps max when crimped to #22 AWG
3 Amps max when crimped to #24 AWG
2 Amps max when crimped to #26 AWG
1 Amps max when crimped to #28 AWG
 - 6 -After 5 insertions into connector,
contact retention must be 5 pounds axial load min
 - 7 -When contact is crimped to 20 AWG, the insulation
support crimped height must be 1.78 mm max to ensure
a proper insertion into housing.
 - 8-Reel should be continuous without any contacts
missing in between
 - 9 -Packaging : 400 Contacts Per Reel



CROSS SECTION FOR CT #20-24



CROSS SECTION FOR CT #24-28



spec ref	dr	P-Mathew Nebu	2011/05/17	projection	MM	size	A3	scale	5:1
tolerance std	eng	Paul Mithun	2019/03/18			ecn no	ELX-I-32091-1	rel level	Released
ISO 406 ISO 1101	chr	-	-						
surface	linear	0.X	±0.3		CRIMP PIN & SOCKET 20-28AWG, 400 Reel Qty	dwg no	C01-8656-0426	rev	K
		0.XX	±0.1						
ISO 1302	angular	0°	±2°	cat. no.	-	Product - Customer Drw	sheet 2 of 2		

Amphenol FCI

© 2016 AFCI