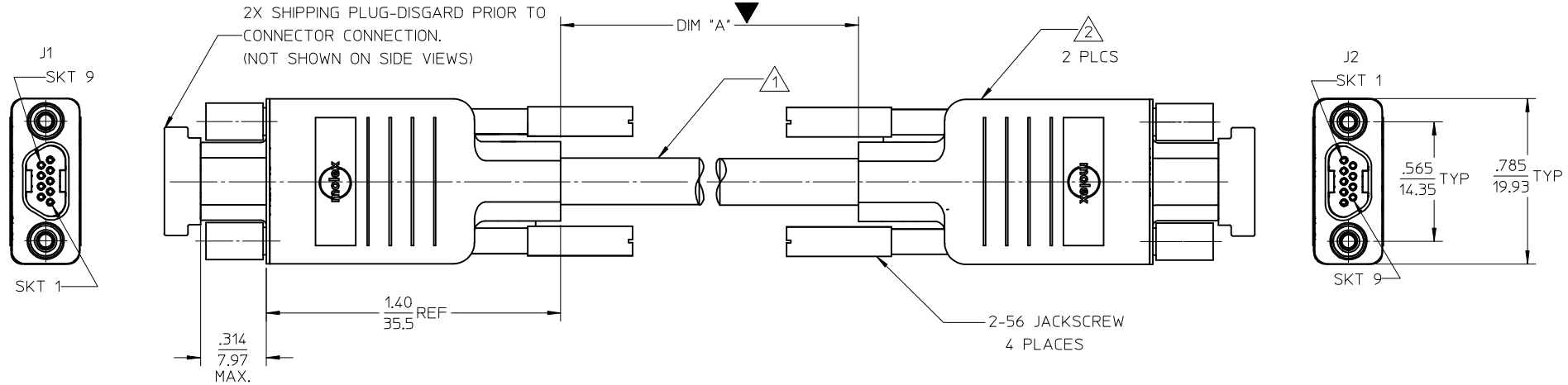


10	9	8	7	6	5	4	3	2	1
MATERIAL NO.	ENGINEERING NO.	DIM "A" INCH	DIM "A" (MM)						
834219049	83421-9049	18.00 +.39/- .39	457.0 +.10.0/-10.0						

ⓓ



NOTES UNLESS OTHERWISE SPECIFIED

- 1 CABLE, 28 AWG, 9 CONDUCTOR
TINNED COPPER
SHIELD: AL-FOIL/MYLAR, INCLUDING DRAIN WIRE & BRAID
WIRE INSULATION: PVC
OUTER CABLE JACKET: BLACK PVC
- 2 MOLEX COMMERCIAL MICRO-D:
EXTERNAL INSULATOR: MOLDED PVC, COLOR: BLACK
INTERNAL BACK SHELL: NICKEL PLATED STEEL
CONTACTS: COPPER ALLOY, GOLD PLATED OVER NICKEL
INTERNAL INSULATOR: THERMOPLASTIC UL 94V-0
- 3. REFER TO PS-83421-9000 FOR PRODUCT SPEC.
- 4. REFER TO PK-83421-011 FOR PACKAGING SPEC.
- 5. ALL DIMS ARE FOR REFERENCE ONLY UNLESS NOTED OTHERWISE.
- 6. RoHS COMPLIANT

J1								J2
1								1
2								2
3								3
4								4
5								5
6								6
7								7
8								8
9								9
SHELL								SHELL

SALES DRAWING

ADD/REMOVE P.N.'S. EC NO: IPG2017-0103 DRAWN: BRUPERT 2016/07/27 CHKD: APPR: BWOODMAN 2016/08/05	DESCRIPTION QUALITY SYMBOLS ▽=1 ◻=0	GENERAL TOLERANCES (UNLESS SPECIFIED)		DIMENSION STYLE IN/MM		SCALE 2:1	DESIGN UNITS INCH	THIRD ANGLE PROJECTION			
			mm	INCH	DRAWN BY JAL	DATE 02/03/26	TITLE COMMERCIAL MICRO-D 9 SOCKET CABLE ASS'Y				
		4 PLACES ± --- ± ---	3 PLACES ± --- ± .005	2 PLACES ± 0.13 ± .010	1 PLACE ± 0.3 ± .020	CHECKED BY HEB	DATE 02/03/27	MOLEX INCORPORATED DOCUMENT NO. SD-83421-9049 SHEET NO. 1 OF 1			
		ANGULAR ± 1/2°				APPROVED BY RWD	DATE 02/03/28				
DRAFT WHERE APPLICABLE MUST REMAIN WITHIN DIMENSIONS		SIZE A3		THIS DRAWING CONTAINS INFORMATION THAT IS PROPRIETARY TO MOLEX INCORPORATED AND SHOULD NOT BE USED WITHOUT WRITTEN PERMISSION							