

NUMBER  
**C-180913**

180913 CLEAR Polyamide 6.6  
 -1 RED \*  
 -3 BLUE \*  
 -5 BLACK \*  
 -7 GRAY \*  
 ORANGE \*

\* NOT YET RELEASED FOR PRODUCTION.

OPTIONAL WAY TO MAKE

DRAFT OPTIONAL

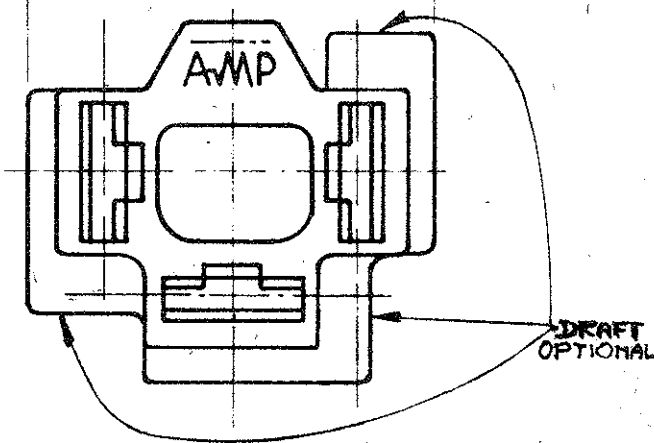
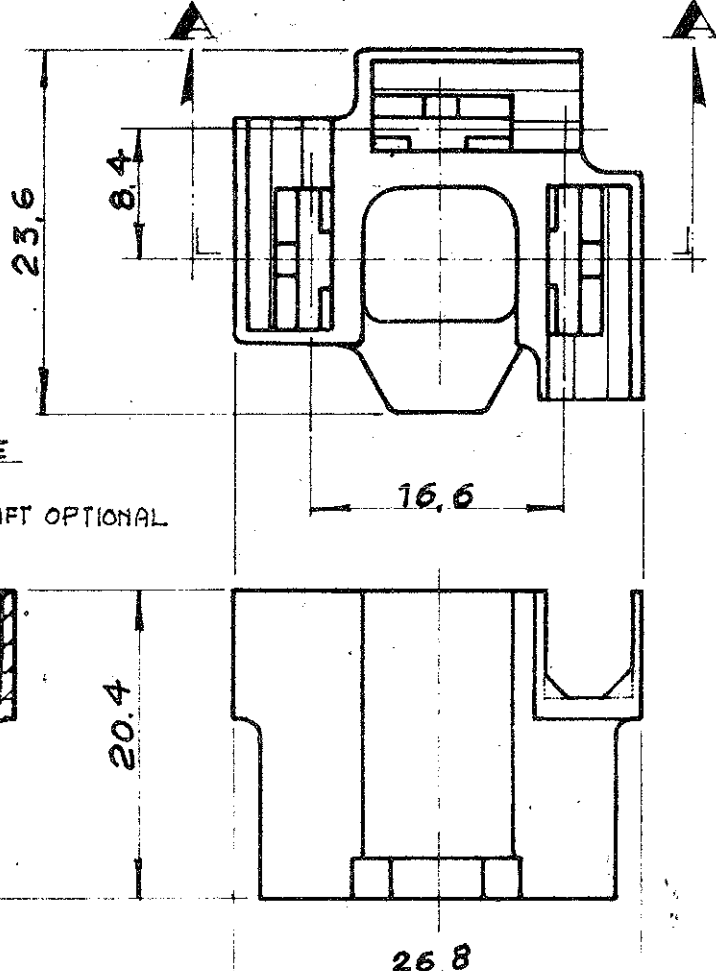
RADII  
OPTIONAL

SEC. **AA**

POLYPROPYLENE	3-180913-0	NOTE 1
A.B.S. BLACK	2-180913-5	NOTE 1
A.B.S. NATURAL	2-180913-0	NOTE 1
RHODIACETA A 21212 BLACK	1-180913-5	
Polyamide 6.6	180913	
MATERIAL	AMP PART NUMBER	

NOTE

1) NOT PRODUCED BY AMP ITALY



DIMENSIONS IN INCHES. DO NOT SCALE PRINTING

M1	REVISED PER ECO-10-000445	KK	HMR	29 JAN 10
M	Revised	EB.		9-9-83
L	UP-DATED MATERIAL TABLE			29/6/1983
K	UP-DATED COLOR TABLE			MARCH 77
J	ADDED OPTIONAL WAY TO MAKE			22/15 APR '75
H	Aggiornato			May 75
G	REVISED			3-75
F	ADDED NOTES OPTIONAL			25-77
E	REVISED & REDRAWN			Nov. 19-78
LTR	REVISION RECORD	DR	CHK	DATE
DR	A MERLINO 12-10-62	DE		
CHK	B '62	APP	R. Baker 12-10-62	

© 1962 BY AMP INCORPORATED ALL RIGHTS RESERVED. AMP PRODUCTS COVERED BY PATENTS AND/OR PATENTS PENDING.

CUSTOMER COPY  
REFERENCE ONLY

MATERIAL AND FINISH  
SEE TABLE



AMP - ITALIA  
CORSO PESCHIERA 299/6  
TORINO - ITALIA

CLASS AUTO-MACH.

WIRE RANGE INSULATION

TYPE 312 FLAG FASTEN-ON

TOLERANCE EXCEPT AS NOTED

SCALE

LOC

NO

**C-180913**

REV

M1

NAME

3 WAY FASTEN-ON RECEPTACLE HOUSING