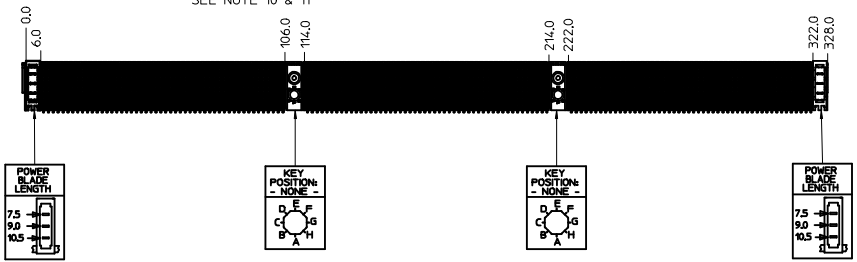


- NOTES:
- MATERIALS: HOUSING - LIQUID CRYSTAL POLYMER (LCP), GLASS-FILLED, UL 94V-0, TERMINALS - HIGH PERFORMANCE COPPER ALLOY, STIFFENER - STAINLESS STEEL.
  - FINISH: SELECTIVE GOLD (Au) IN CONTACT AREA, 0.76 micrometers MINIMUM THICKNESS; SELECTIVE MATTE TIN (Sn) ON PCB TAILS, NICKEL (Ni) UNDERPLATE OVERALL.
  - PRODUCT CONFORMS TO MOLEX PRODUCT SPECIFICATION PS-74031-999.
  - PARTS ARE PACKAGED PER PK-70873-5041. MOUNTING SCREWS WILL BE BAGGED WITH EACH CONNECTOR.
  - REFER TO MOLEX DOCUMENT SD-74681-002 FOR ADDITIONAL DETAIL ON THE HSD SIGNAL WAFER.
  - REFER TO MOLEX DOCUMENT SD-74037-006 FOR ADDITIONAL DETAIL ON THE HSD GUIDANCE MODULE.
  - REFER TO MOLEX DOCUMENT SD-75885-002 FOR ADDITIONAL DETAIL ON THE HSD POWER MODULE.
  - REFER TO MOLEX DOCUMENT SD-74039-027 FOR ADDITIONAL DETAIL ON THE HSD GROUND MODULE.
  - PRODUCT CONFORMS TO CLASS B REQUIREMENTS OF MOLEX COSMETIC SPECIFICATION PS-45499-002.
  - GUIDANCE MODULE (ITEM 4) WILL BE SHIPPED LOOSE WITH LEFT SIDE CONNECTOR. END USER TO INSERT ON CONNECTOR AFTER INSTALLATION OF BOTH SUB-ASSEMBLIES ON DAUGHTERCARD.
  - GUIDANCE MODULE (ITEM 4), MOUNTING SCREWS (ITEMS 5 & 11) AND KEY BUSHINGS (ITEMS 6 & 12) TO BE PLACED IN A BAG AND SHIPPED WITH LEFT SIDE CONNECTOR. LEFT & RIGHT SIDE CONNECTORS TO BE SHIPPED IN SEPARATE TUBES.

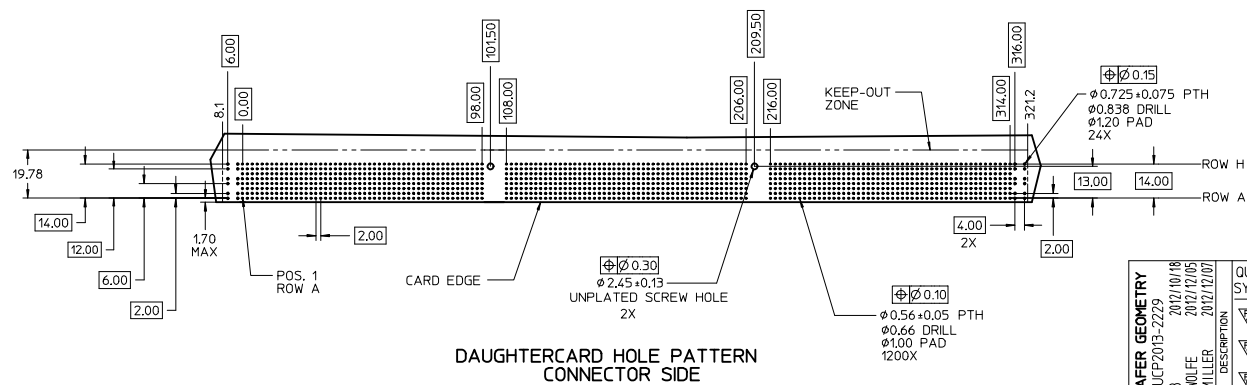


LEFT SIDE CONNECTOR

ITEM	PART NUMBER	QTY	DESCRIPTION
1	74046-0111	1	STIFFENER
2	74681-1001	50	HSD SIGNAL WAFER, LF
3	75885-8321	1	POWER MODULE, LF
4	74037-0008	1	GUIDE MODULE
5	73726-0000	1	MOUNTING SCREW
6	73661-0000	1	KEY BUSHING

RIGHT SIDE CONNECTOR

ITEM	PART NUMBER	QTY	DESCRIPTION
7	74046-0217	1	STIFFENER
8	74681-1001	100	HSD SIGNAL WAFER, LF
9	75885-8321	1	POWER MODULE, LF
10	74037-0008	1	GUIDE MODULE
11	73726-0000	1	MOUNTING SCREW
12	73661-0000	1	KEY BUSHING



LEAD-FREE  
PLATING

CUSTOMER: GRASS VALLEY GROUP

DAUGHTERCARD HOLE PATTERN  
CONNECTOR SIDE

REV WAFER GEOMETRY EC NO: UCP2013-2229 DRAWN BY: 2012/10/18 CHKD: MWLF 2012/12/05 APPR: SMILLER 2012/12/07	QUALITY SYMBOLS	GENERAL TOLERANCES (UNLESS SPECIFIED)	DIMENSION STYLE	SCALE	DESIGN UNITS	THIRD ANGLE PROJECTION
	∇=0 ∇=0 ∇=0	mm INCH 4 PLACES ± --- ± --- 3 PLACES ± --- ± --- 2 PLACES ± 0.25 ± --- 1 PLACE ± 0.38 ± --- 0 PLACE ± --- ± ---	MM ONLY	DATE	METRIC	TITLE VHDM 8 ROW HSD, LF DAUGHTERCARD SALES DRAWING
	ANGULAR ±1/2° DRAFT WHERE APPLICABLE MUST REMAIN WITHIN DIMENSIONS	DRAWN BY: THOMAS 2004/11/19 CHECKED BY: DATE APPROVED BY: SMILLER 2012/03/14	MATERIAL NO. 74680-0299	DOCUMENT NO. SD-74680-299	SHEET NO. 1 OF 1	
	THIS DRAWING CONTAINS INFORMATION THAT IS PROPRIETARY TO MOLEX INCORPORATED AND SHOULD NOT BE USED WITHOUT WRITTEN PERMISSION					