

SAW Filter 996.34MHz
Part No: MP03067

Model: TA0820A
Rev No: 2.1

A. MAXIMUM RATING:

1. Input Power Level: 10dBm
2. DC voltage: 5V
3. Operating Temperature: -40°C to +85°C
4. Storage Temperature: -40°C to +85°C

B. ELECTRICAL CHARACTERISTICS:

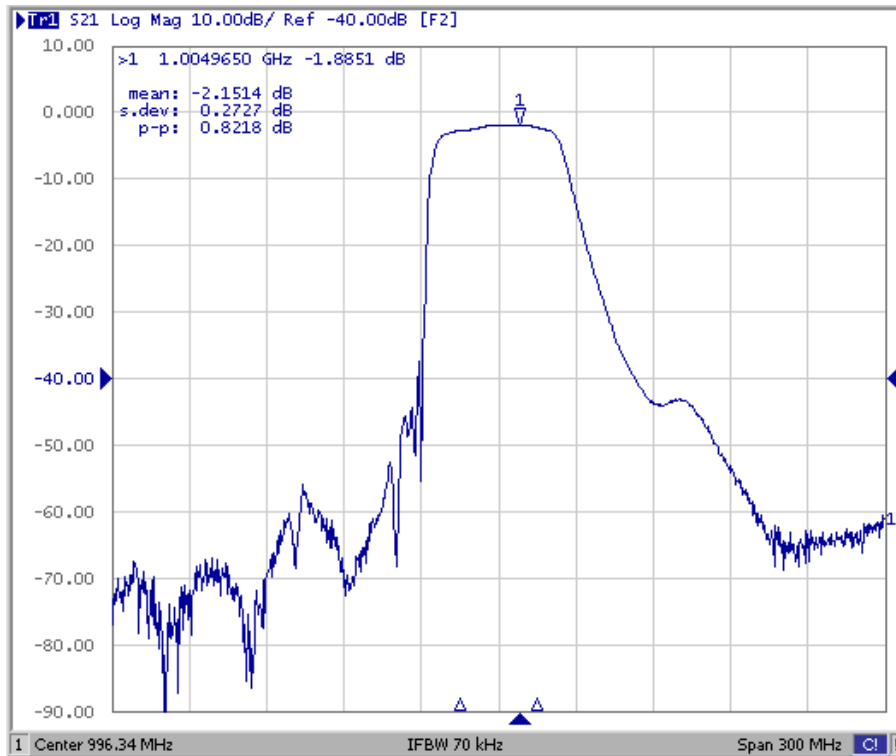
Item	Unit	Min.	Typ.	Max.
Center frequency Fc	MHz	-	996.34	-
Insertion loss at Fc IL	dB	-	1.9	-
1dB bandwidth	MHz	30	38	-
3dB bandwidth	MHz	-	48	-
Insertion loss at 981.34 ~ 1011.34MHz	dB	-	2.6	4.8
Ripple (981.34 ~ 1011.34MHz)	dB	-	0.85	1.6
VSWR (981.34 ~ 1011.34MHz)		-	1.6	2.5
Group Delay ripple at 981.34 ~ 1011.34MHz	nsec		15	80
Attenuation (Reference level from IL)				
10 ~ 956MHz	dB	40	50	-
1046 ~ 1097MHz	dB	28	35	-
1097 ~ 1146MHz	dB	40	60	-

SAW Filter 996.34MHz
Part No: MP03067

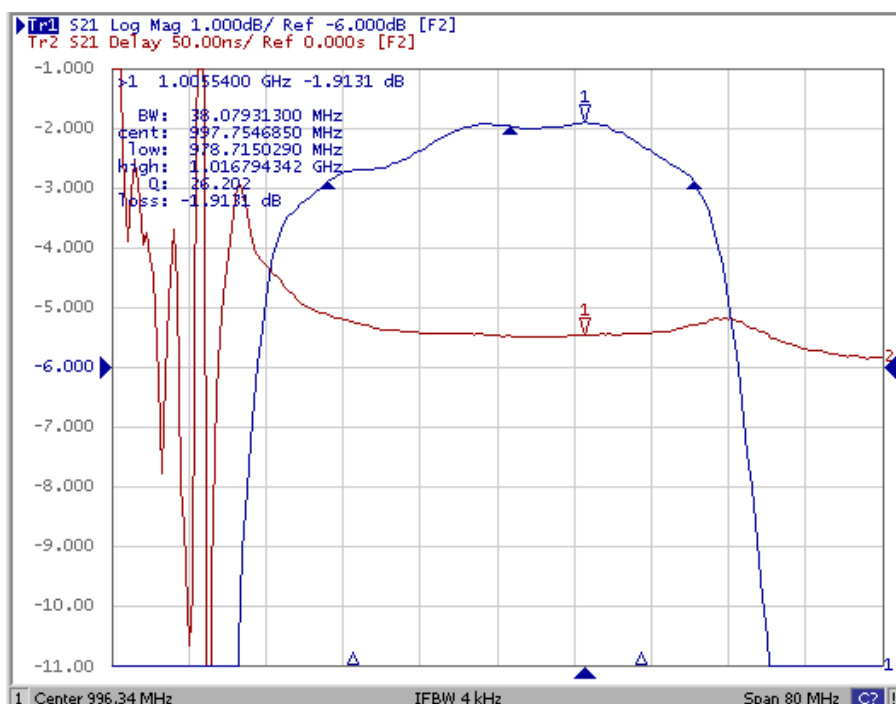
Model: TA0820A
Rev No: 2.1

C. FREQUENCY CHARACTERISTICS:

1. Wide band Response: (span 300MHz)



2. Pass band Response: (span 80MHz)



SAW Filter 996.34MHz
Part No: MP03067

Model: TA0820A
Rev No: 2.1

3. S11 VSWR Variation: (span 200MHz)



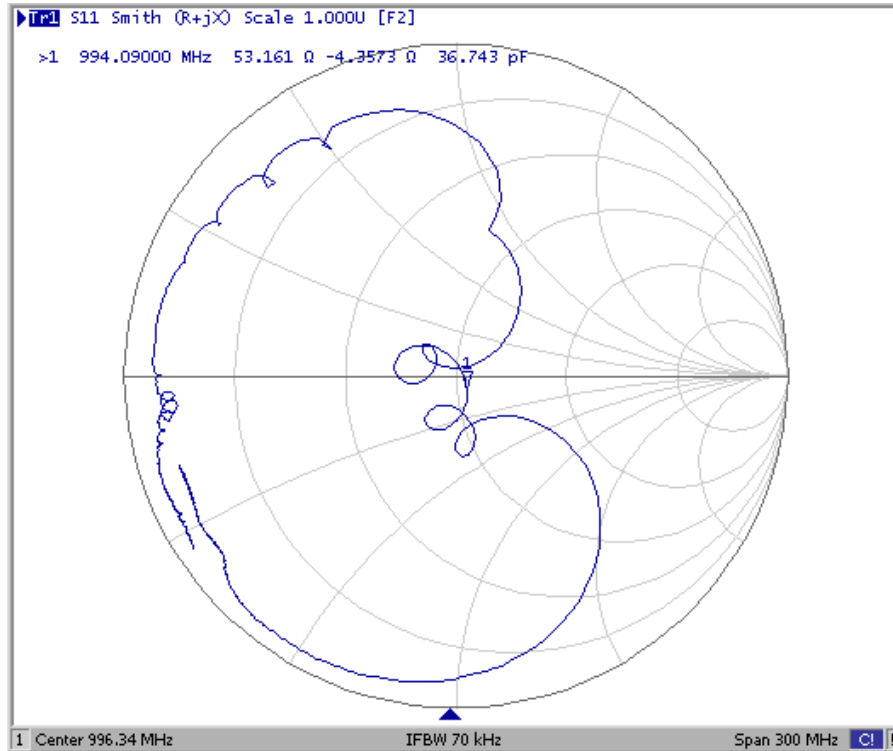
4. S22 VSWR Variation: (span200MHz)



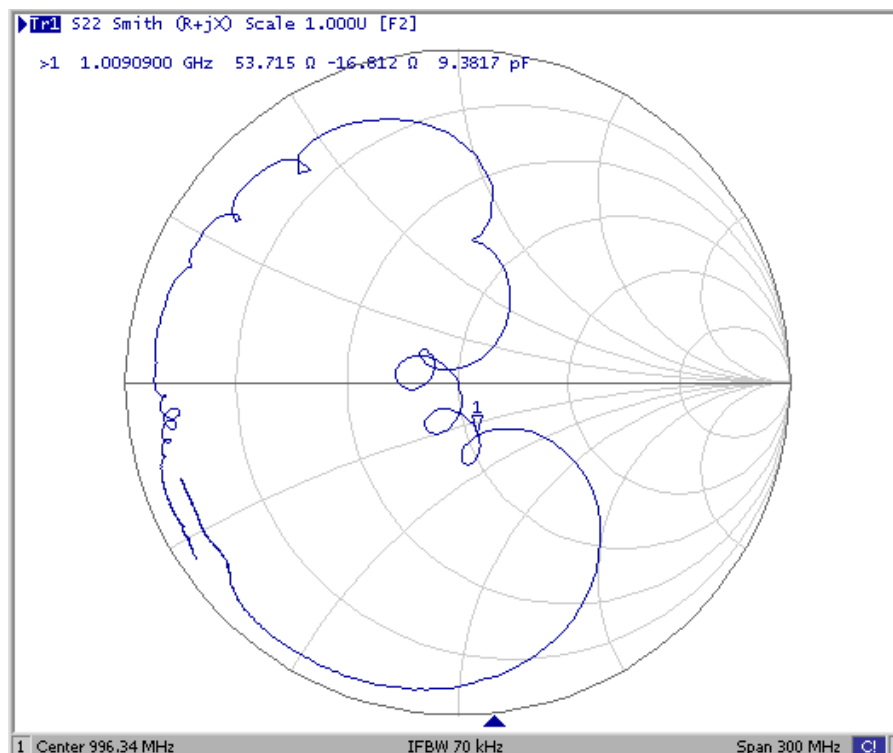
SAW Filter 996.34MHz
Part No: MP03067

Model: TA0820A
Rev No: 2.1

5. S11 Smith-Chart: (span 300MHz)



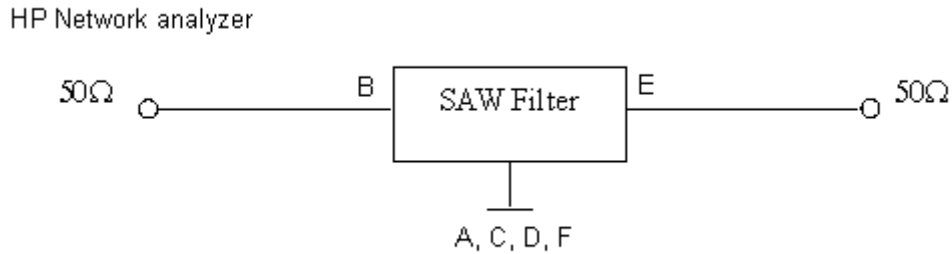
6. S22 Smith-Chart: (span 300MHz)



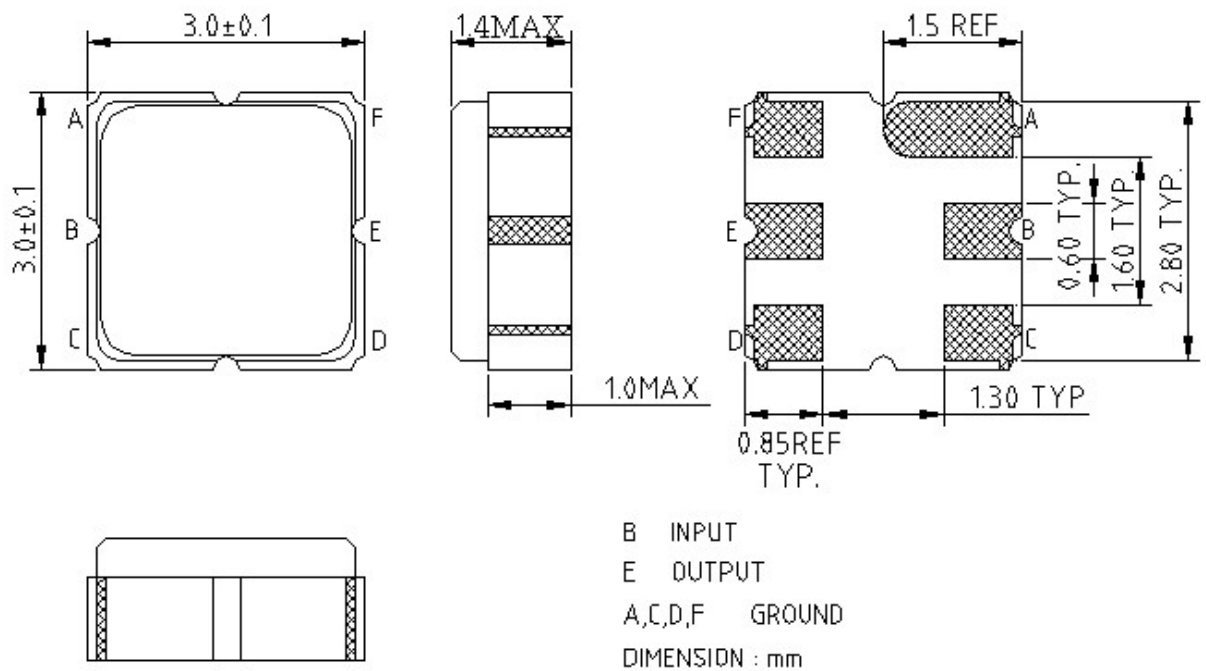
SAW Filter 996.34MHz
Part No: MP03067

Model: TA0820A
Rev No: 2.1

D. MEASUREMENT CIRCUIT:



E. OUTLINE DRAWING:



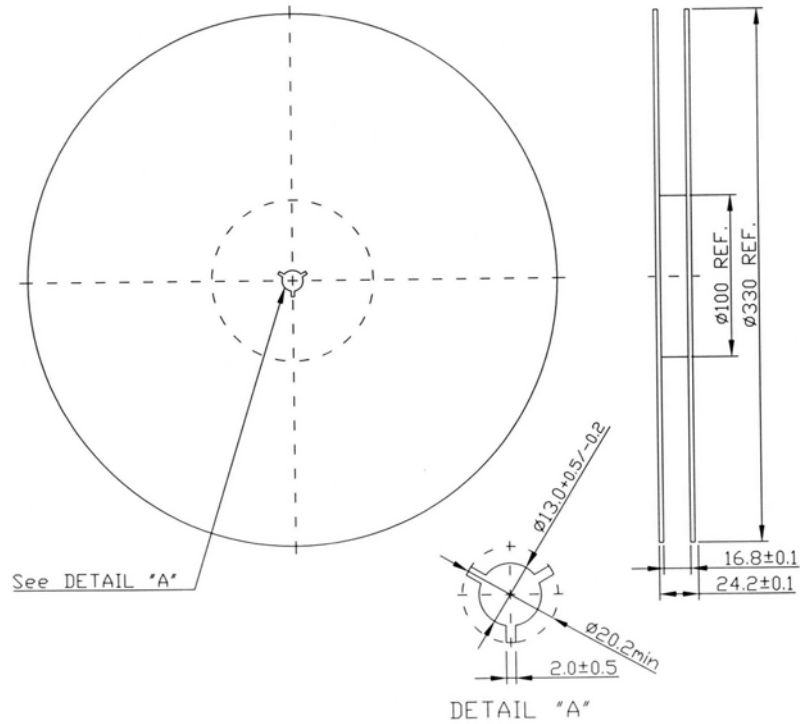
B: Input
 E: Output
 A, C, D, F: Ground
 Unit: mm

SAW Filter 996.34MHz
Part No: MP03067

Model: TA0820A
Rev No: 2.1

F. PACKING:

1. Reel Dimension



2. Tape Dimension

