



# *SAW Components*

*Data Sheet B5025*

Data Sheet

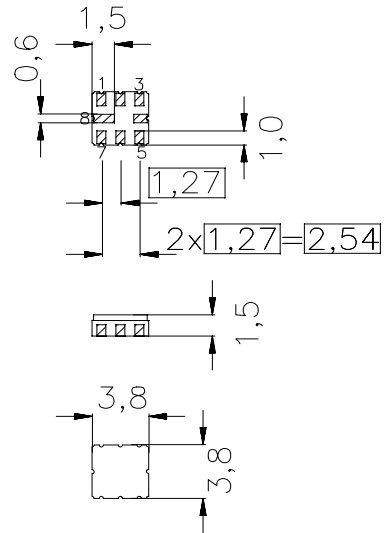
A large, stylized, 3D-rendered graphic of the EPCOS logo. The letters "EPCOS" are rendered in a bold, sans-serif font, appearing to be part of a curved, metallic-looking structure. The background is dark and textured, suggesting a globe or a complex surface.

**Data Sheet**
**Ceramic package QCC8B**
**Features**

- Low-loss IF filter
- Ceramic SMD package
- Balanced or unbalanced operation

**Terminals**

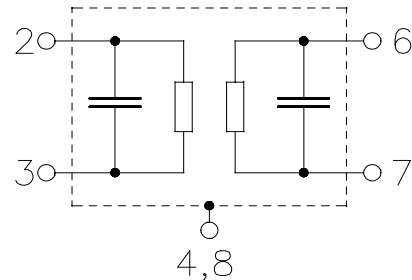
- Gold plated



typ. Dimensions in mm, approx. weight 0,1 g

**Pin configuration**

3	Input
2	Input or input ground
7	Output
6	Output or output ground
4, 8	Case ground
1, 5	To be grounded



Type	Ordering code	Marking and Package according to	Packing according to
B5025	B39371-B5025-Z810	C61157-A7-A46	F61074-V8167-Z000

**Electrostatic Sensitive Device (ESD)**
**Maximum ratings**

Operable temperature range	$T$	-40 / +85	°C	Machine Model, 10 pulses
Storage temperature range	$T_{stg}$	-40 / +85	°C	
DC voltage	$V_{DC}$	5	V	
ESD voltage	$V_{ESD}^*$	100*	V	
Source power	$P_s$	10	dBm	

\*-acc. to JESD22-A115A(Machine Model), 10 negative &amp; 10 positive pulses



Data Sheet

**Characteristics**

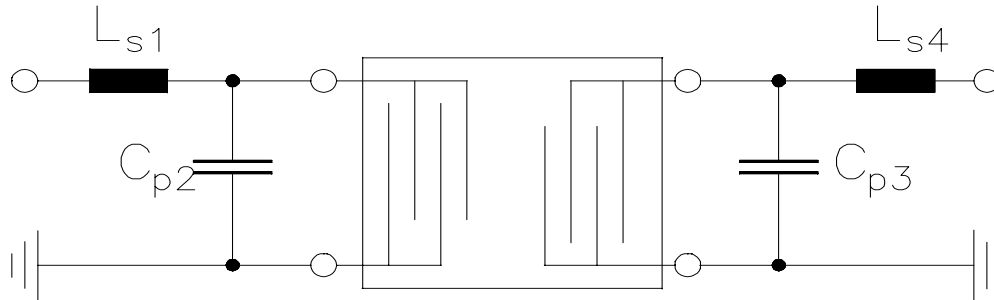
Operating temperature range:  $T = -10 \dots 80 \text{ }^\circ\text{C}$   
 Terminating source impedance:  $Z_S = 50 \text{ } \Omega$  unbalanced and matching network.  
 Terminating load impedance:  $Z_L = 50 \text{ } \Omega$  unbalanced and matching network.

		min.	typ.	max.	
<b>Nominal frequency</b>	$f_N$	—	374,0	—	MHz
<b>Minimum insertion attenuation</b> (including matching network)	$\alpha_{\min}$	—	4,1	6,0	dB
<b>Bandwidth</b>	$B_{3\text{dB}}$				
$\alpha_{\text{rel}} \leq 3 \text{ dB}$		17	20,5	—	MHz
<b>Amplitude ripple (peak-to-peak)</b>	$\Delta\alpha$				
$f_N \pm 7 \text{ MHz}$		—	1,0	1,5	dB
<b>Group delay ripple (p-p)</b>	$\Delta\tau$				
$f_N \pm 7 \text{ MHz}$		—	45	100	ns
<b>Relative attenuation (relative to <math>\alpha_{\min}</math>)</b>	$\alpha_{\text{rel}}$				
$f_N - 65,0 \text{ MHz} \dots f_N - 22,0 \text{ MHz}$		40	54	—	dB
$f_N - 22,0 \text{ MHz} \dots f_N - 16,5 \text{ MHz}$		35	41	—	dB
$f_N + 16,5 \text{ MHz} \dots f_N + 20,0 \text{ MHz}$		27	35	—	dB
$f_N + 20,0 \text{ MHz} \dots f_N + 30,0 \text{ MHz}$		35	37	—	dB
$f_N + 30,0 \text{ MHz} \dots f_N + 80,0 \text{ MHz}$		40	50	—	dB
<b>Temperature coefficient of frequency</b>	$TC_f$	—	- 70	—	ppm/K

## Data Sheet

**Matching network to 50  $\Omega$** 

(Element values depend upon PCB layout)



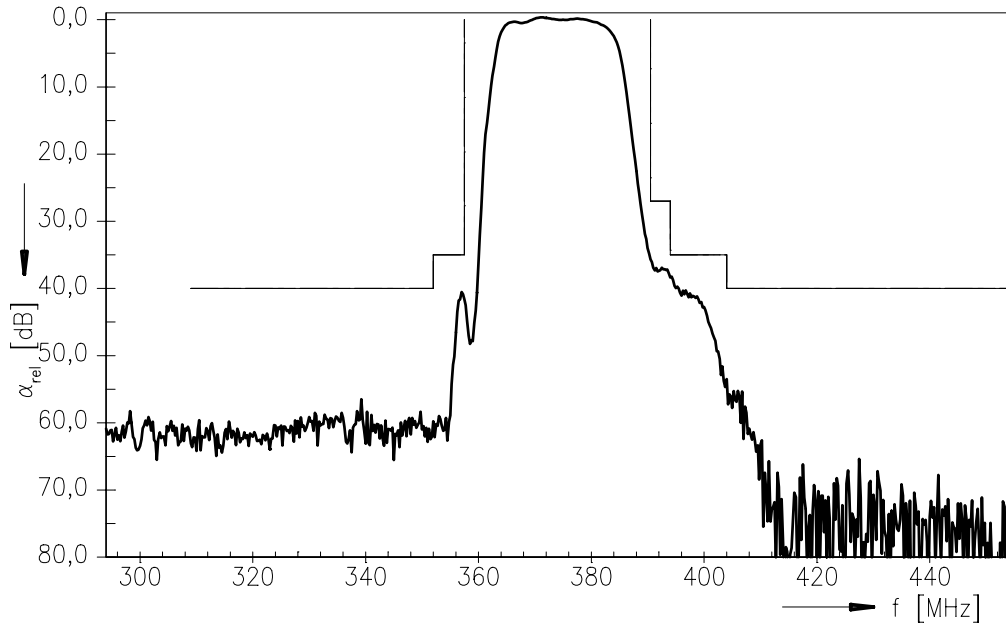
$$L_{s1} = 39\text{nH}$$
$$C_{p2} = 1,2\text{pF}$$

$$C_{p3} = 1,0\text{pF}$$
$$L_{s4} = 47\text{nH}$$

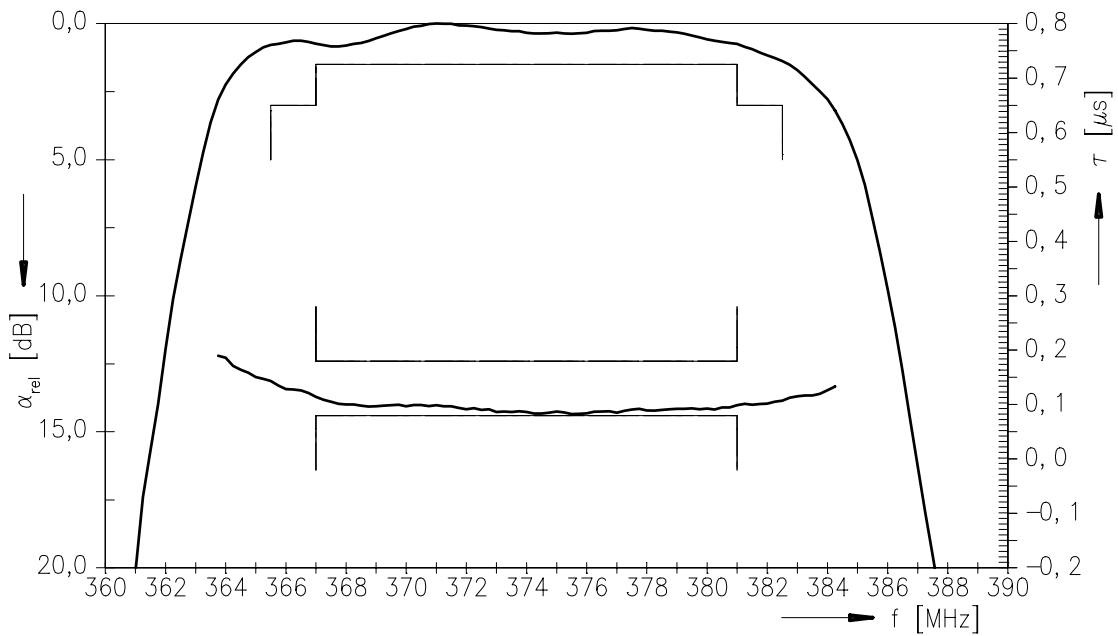


Data Sheet

Transfer function:



Transfer function (pass band):





**SAW Components**

**B5025**

**Low-Loss Filter**

**374,0 MHz**

Data Sheet

**Published by EPCOS AG**

**Surface Acoustic Wave Components Division, SAW MC PD**

**P.O. Box 80 17 09, 81617 Munich, GERMANY**

© EPCOS AG 2005. Reproduction, publication and dissemination of this brochure and the information contained therein without EPCOS' prior express consent is prohibited.

Purchase orders are subject to the General Conditions for the Supply of Products and Services of the Electrical and Electronics Industry recommended by the ZVEI (German Electrical and Electronic Manufacturers' Association), unless otherwise agreed.

This brochure replaces the previous edition.

For questions on technology, prices and delivery please contact the Sales Offices of EPCOS AG or the international Representatives.

Due to technical requirements components may contain dangerous substances. For information on the type in question please also contact one of our Sales Offices.