

WC26SM Series



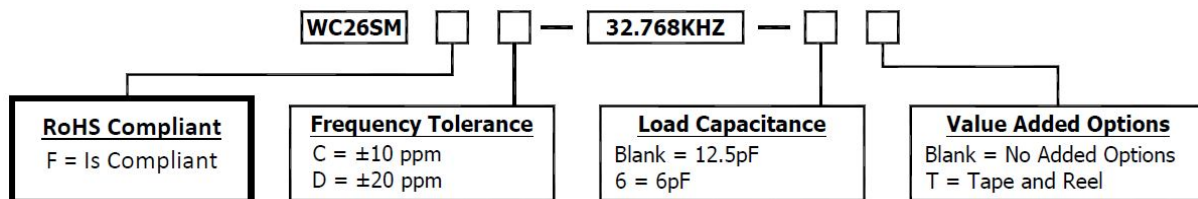
- **Surface Mountable Clock Crystal**
- **32.768 kHz**
- **Small Compact Size**
- **RoHS Compliant**



Electrical Specifications:

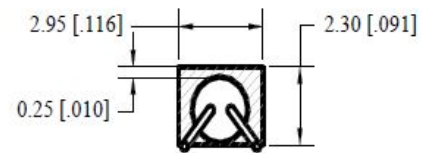
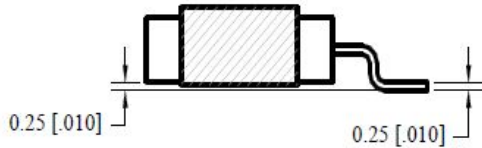
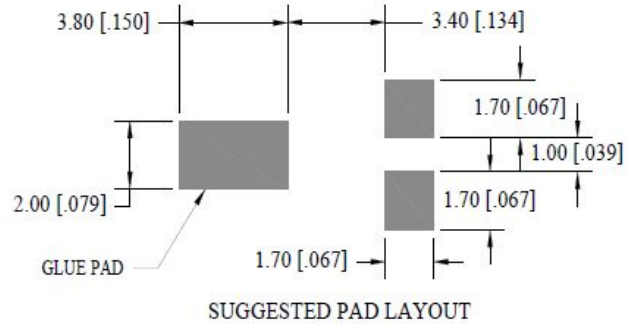
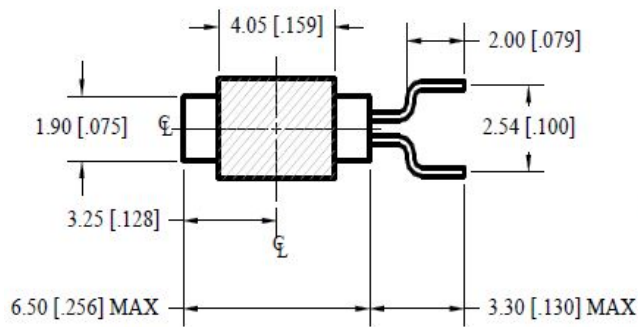
Frequency	32.768 kHz
Tolerance at +25°C	See Part Number Guide for Options
Stability	-0.034 ppm (± 0.006)/C°2
Aging	± 5 ppm/ yr
Shunt Capacitance	1.5 pF
Load Capacitance	12.5 pF Typ (6pF Option)
Motional Capacitance	0.003 pF TYP
Operating Temperature	-40°C to +85°C
Storage Temperature	-40°C to +85°C
Equivalent Resistance	50k Ohms Max
Drive Level	1 μ W Max
Temperature Coefficient	0.04 ppm / ° C
Insulation Resistance	500 Mega ohms Min / DC 100 V
Shock Resistance	± 5 ppm Max (Drop test 3 times on a hard board from 75 cm)

Part Number Guide



Please consult with MMD sales department for any other parameters or options.

Mechanical Details

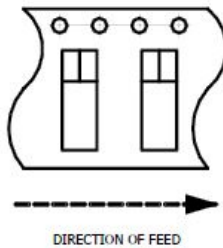
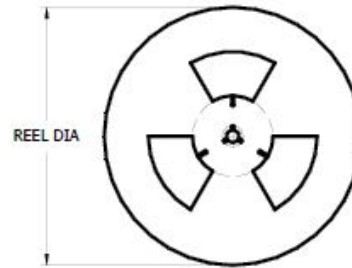
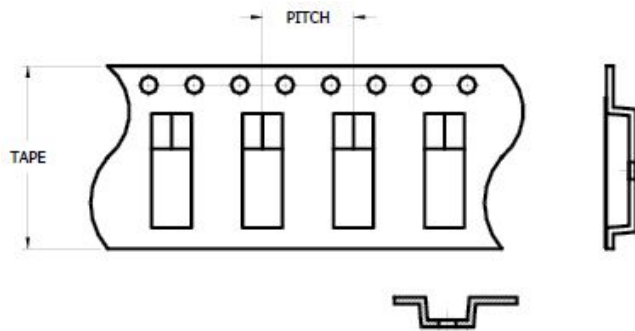


Dimensions in brackets are in inches

NOTES

1. CAN PLATING = Ni
2. LEAD PLATING = Sn 95% - 98%, Cu 2% - 5%

Tape & Reel Dimensions



PITCH	8.0
TAPE	16.0
REEL	330 [13 IN]
COUNT	1000

Notes: UNLESS OTHERWISE SPECIFIED

1. Applicable Standards / Specifications
ANSI Y14.5M, Dimensions and Tolerances
EIA-481-B, 8mm through 200mm Embossed
Carrier Tapping and 8mm and 12mm
Punched Carrier Tapping of Surface Mount
Components for Automatic Handling.
2. Dimensions are in millimetres.
3. Tolerances are ± 0.1 mm unless otherwise
specified.
4. Do not scale drawing.