

10 9 8 7 6 5 4 3 2 1

F F

E E

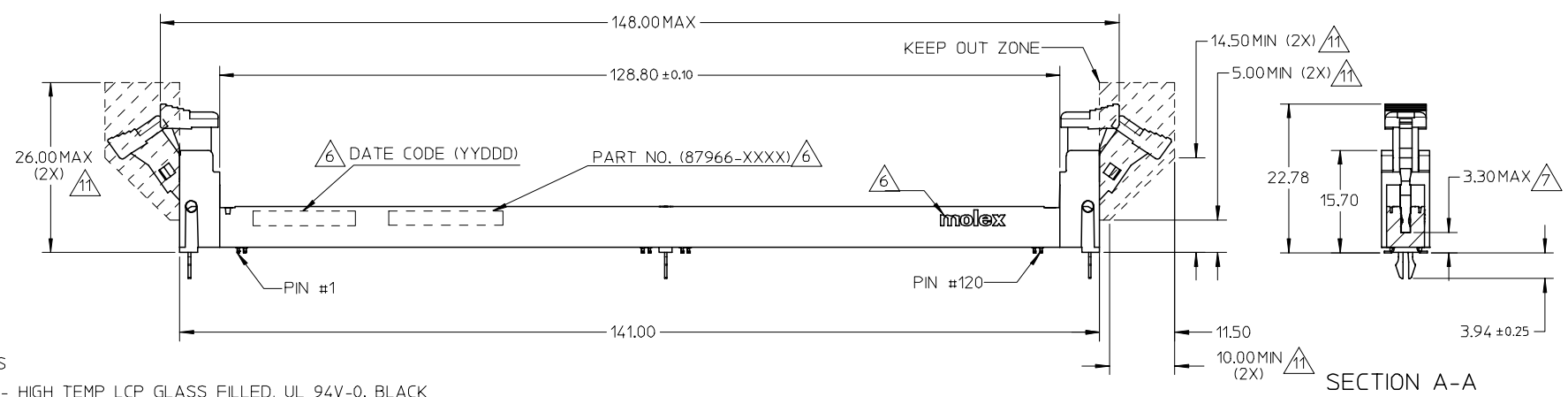
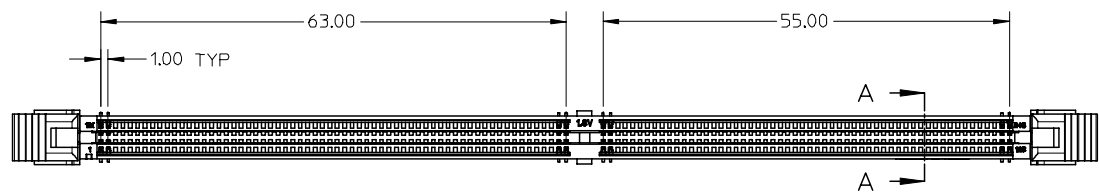
D D

C C

B B

A A

9 8 7 6 5 4 3 2 1

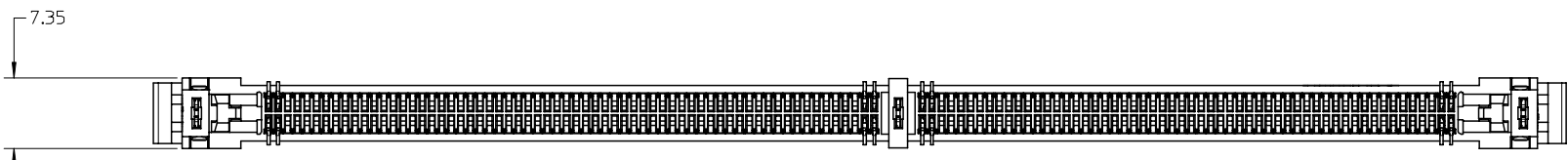


- NOTES:
- MATERIALS  
HOUSING - HIGH TEMP LCP GLASS FILLED, UL 94V-0, BLACK  
EJECTORS - HIGH TEMP NYLON GLASS FILLED, UL 94V-0, BLACK  
TERMINALS - COPPER ALLOY
  - PLATING OPTION - PLS REFER TO SHEET 5.
  - CARD SLOT ACCEPTS 1.27±0.10MM MODULE THICKNESS. (MEASURED OVER PC PADS)
  - RECOMMENDED MODULE LAYOUT SHALL BE AS PER JEDEC MO-237. PLS REFER TO SHEET 3.
  - PRODUCT IS PACKED INTO TRAYS.
  - MOLEX LOGO, DATE CODE & PART NO. INDICATED ON HOUSING.
  - DIMM MODULE SEATING PLANE FROM TOP OF PCB.
  - COPLANARITY FOR SOLDER TAILS SHALL NOT EXCEED 0.20MM.
  - REFER TO PRODUCT SPEC. PS-87966-001 FOR PERFORMANCE SPECIFICATIONS.
  - THE KEEP OUT AREA IS THE AREA WHERE THE CONNECTOR IS MOUNTED ONTO THE PCB, WHICH DOES NOT INCLUDE THE LATCH.
  - KEEP OUT ZONE AS PER JEDEC SO-001.
  - CONTACT MOLEX FOR AVAILABILITY OF PRODUCT OPTIONS.

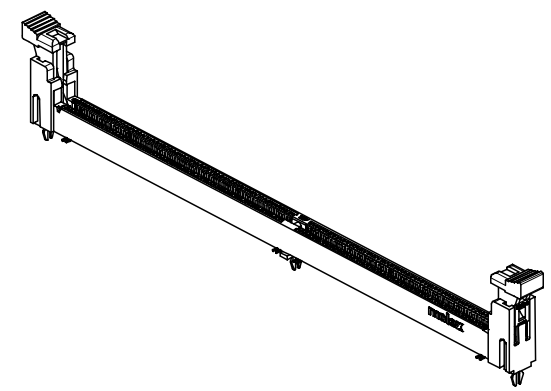
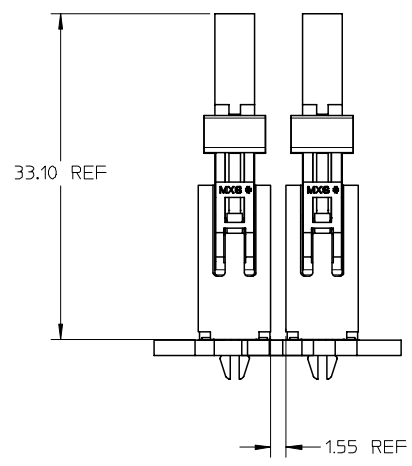
|   |                               |                                       |               |                            |                       |   |   |                        |  |  |
|---|-------------------------------|---------------------------------------|---------------|----------------------------|-----------------------|---|---|------------------------|--|--|
| REVISED PAD SIZE<br>EC NO: S2007-0667<br>DRWN: CCTEH<br>CHKD: SRAMESH<br>APPR: SILENI | QUALITY SYMBOLS<br>▽=0<br>◻=0 | GENERAL TOLERANCES (UNLESS SPECIFIED) |               | DIMENSION STYLE<br>MM ONLY |                       | SCALE<br>NTS  | DESIGN UNITS<br>METRIC  | THIRD ANGLE PROJECTION |  |  |
|   |                               |                                       | mm            | INCH                       | DRAWN BY<br>CCTEH     | DATE<br>2005/10/19                                      | TITLE<br>DDR2 DIMM, 1.00MM PITCH<br>240 CKTS, SMT   |                        |  |  |
|   |                               | 4 PLACES                              | ± ---         | ± ---                      | CHECKED BY<br>SRAMESH | DATE<br>2005/11/21                                      | MATERIAL NO.<br>GGLEE   |                        |  |  |
|   |                               | 3 PLACES                              | ± ---         | ± ---                      | APPROVED BY<br>GGLEE  | DATE<br>2005/11/21                                      | DOCUMENT NO.<br>SD-87966-002  |                        |  |  |
|   |                               |                                       | 2 PLACES      | ± 0.10                     | ± ---                 | MOLEX INCORPORATED                                      |   |                        |  |  |
|   |                               |                                       | 1 PLACE       | ± ---                      | ± ---                 | SHEET NO.<br>1 OF 5                                     |   |                        |  |  |
|   |                               |                                       | ANGULAR ± 1 ° |                            |                       | DRAFT WHERE APPLICABLE<br>MUST REMAIN WITHIN DIMENSIONS |   |                        |  |  |
| B1  | REV                           | DESCRIPTION                           |               |                            | SIZE<br>A3            |   | THIS DRAWING CONTAINS INFORMATION THAT IS PROPRIETARY TO MOLEX INCORPORATED AND SHOULD NOT BE USED WITHOUT WRITTEN PERMISSION |                        |  |  |

10 9 8 7 6 5 4 3 2 1

F



E



D

C

B

A

REVISED PAD SIZE  
 EC NO: S2007-0667  
 DRWN: CCTEH  
 CHKD: SRRAMESH  
 APPR: SHLENI

DESCRIPTION  
 2007/02/08  
 2007/02/08  
 2007/02/09

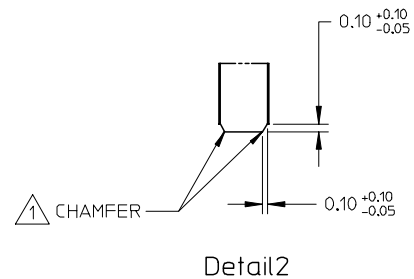
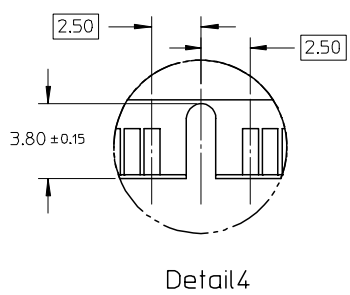
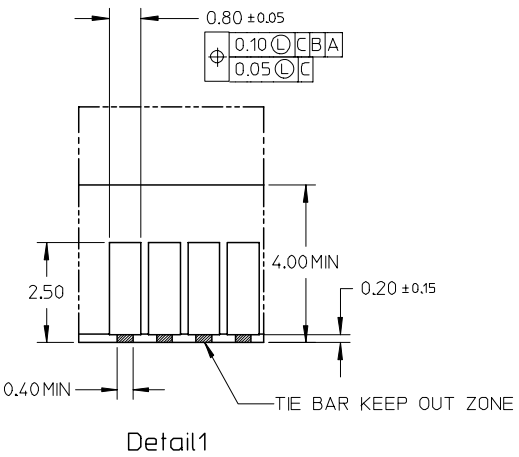
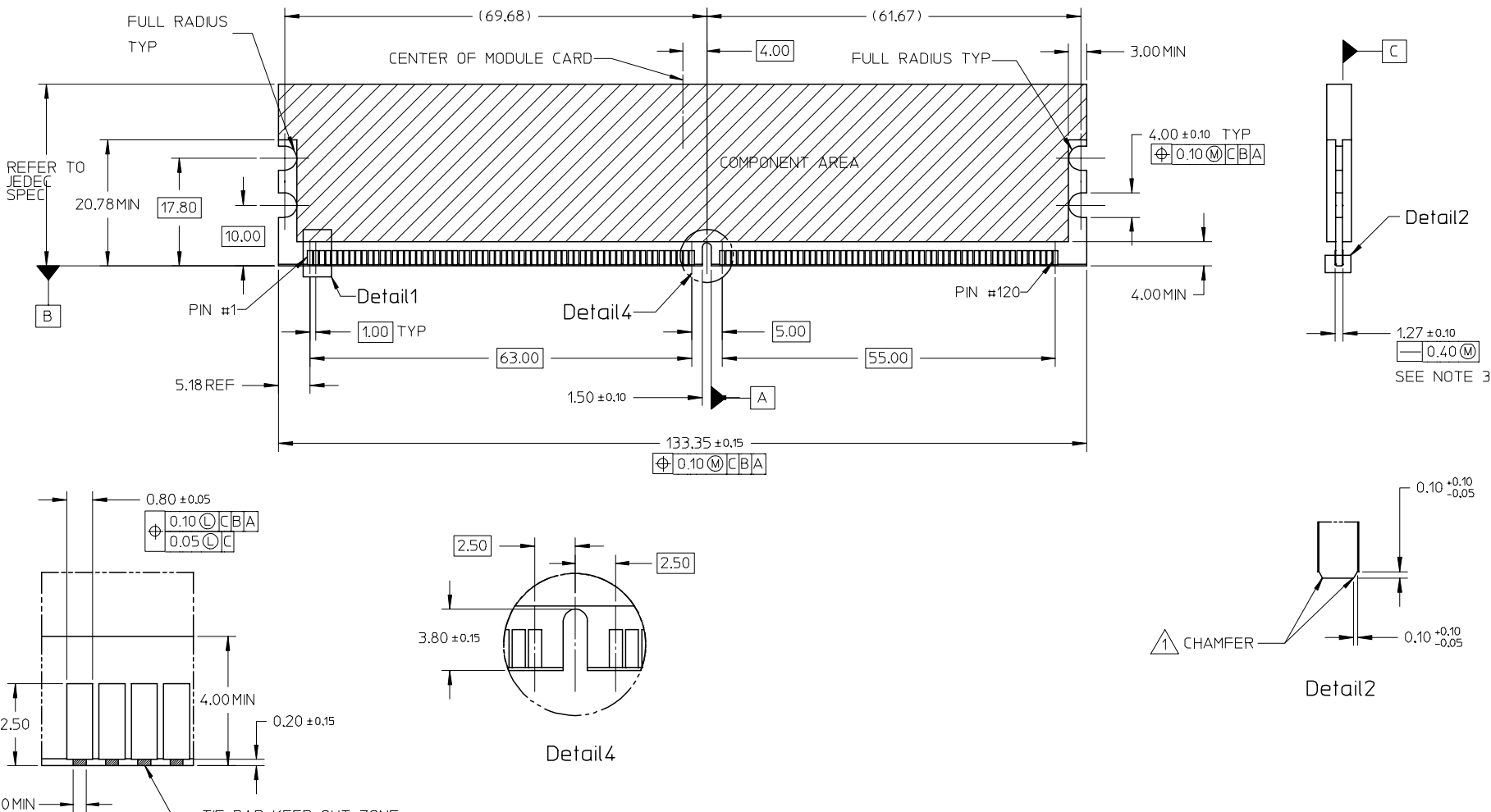
|               | GENERAL TOLERANCES (UNLESS SPECIFIED) |       |
|---------------|---------------------------------------|-------|
|               | mm                                    | INCH  |
| 4 PLACES      | ± ---                                 | ± --- |
| 3 PLACES      | ± ---                                 | ± --- |
| 2 PLACES      | ± 0.10                                | ± --- |
| 1 PLACE       | ± ---                                 | ± --- |
| ANGULAR ± 1 ° |                                       |       |

| DIMENSION STYLE |            |
|-----------------|------------|
| MM ONLY         |            |
| DRAWN BY        | DATE       |
| CCTEH           | 2005/10/19 |
| CHECKED BY      | DATE       |
| SRRAMESH        | 2005/11/21 |
| APPROVED BY     | DATE       |
| GGLEE           | 2005/11/21 |
| MATERIAL NO.    |            |
| SEE TABLE       |            |

| SCALE                                    | DESIGN UNITS | THIRD ANGLE PROJECTION |
|--|--------------|------------------------|
| NTS                                      | METRIC       |                        |
| TITLE                                    |              |                        |
| DDR2 DIMM, 1.00MM PITCH<br>240 CKTS, SMT |              |                        |
| MOLEX INCORPORATED                       |              |                        |
| DOCUMENT NO.                             |              | SHEET NO.              |
| SD-87966-002                             |              | 2 OF 5                 |

9 8 7 6 5 4 3 2 1

# RECOMMENDED MODULE LAYOUT



NOTES:  
 1. MODULE CARD USED IN PRODUCT TESTING ARE CHAMFER.

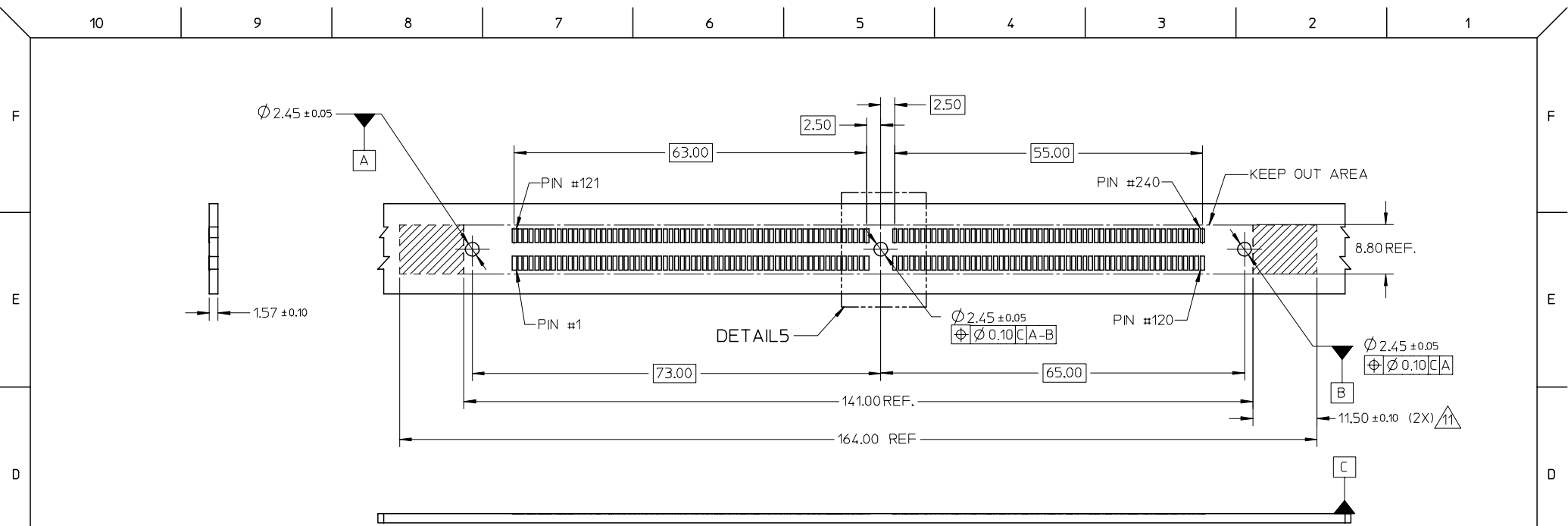
|                   |             |
|-------------------|-------------|
| REVISED PAD SIZE  | DESCRIPTION |
| EC NO: S2007-0667 | 2007/02/08  |
| DRWN: CTEH        | 2007/02/08  |
| CHKD: SRRAMESH    | 2007/02/09  |
| APPR: SHLENI      | 2007/02/09  |
| B1                | REV         |

|                 |             |
|-----------------|-------------|
| QUALITY SYMBOLS | DESCRIPTION |
| ▽=0             |             |
| ∇=0             |             |

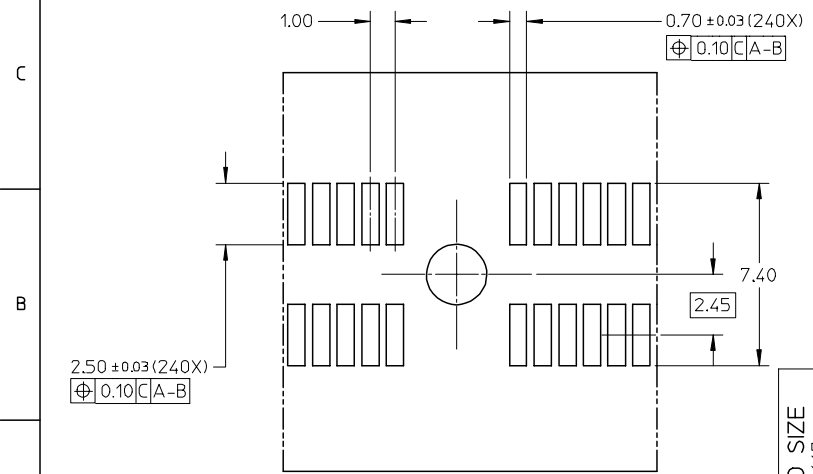
| GENERAL TOLERANCES (UNLESS SPECIFIED)                |           |
|--|-----------|
| PLACES   | TOLERANCE |
| 4 PLACES   | ± ---     |
| 3 PLACES   | ± ---     |
| 2 PLACES   | ± 0.10    |
| 1 PLACE  | ± ---     |
| ANGULAR ± 1 °  |           |
| DRAFT WHERE APPLICABLE MUST REMAIN WITHIN DIMENSIONS |           |

| DIMENSION STYLE |            |
|-----------------|------------|
| MM ONLY         |            |
| DRAWN BY        | DATE       |
| CTEH            | 2005/10/19 |
| CHECKED BY      | DATE       |
| SRRAMESH        | 2005/11/21 |
| APPROVED BY     | DATE       |
| GGLEE           | 2005/11/21 |
| MATERIAL NO.    |            |
| SEE TABLE       |            |
| SIZE            |            |
| A3              |            |

| SCALE                                   | DESIGN UNITS | THIRD ANGLE PROJECTION |
|---|--------------|------------------------|
| NTS                                     | METRIC       |                        |
| TITLE                                   |              |                        |
| DDR2 DIMM, 100MM PITCH<br>240 CKTS, SMT |              |                        |
| MOLEX INCORPORATED                      |              |                        |
| DOCUMENT NO.                            | SHEET NO.    |                        |
| SD-87966-002                            | 3 OF 5       |                        |



RECOMMENDED STENCIL THICKNESS = 150µM.



DETAILS 5

|                   |             |
|-------------------|-------------|
| REVISED PAD SIZE  | DESCRIPTION |
| EC NO: S2007-0667 | 2007/02/08  |
| DRWN: CCTEH       | 2007/02/08  |
| CHKD: SRRAMESH    | 2007/02/08  |
| APPR: SILENI      | 2007/02/09  |
| B1                | REV         |

|                 |             |
|-----------------|-------------|
| QUALITY SYMBOLS | DESCRIPTION |
| ▽=0             |             |
| ▽=0             |             |

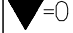
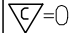
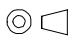
|  |        |
|--|--------|
| GENERAL TOLERANCES (UNLESS SPECIFIED)                |        |
|  | mm     |
|  | INCH   |
| 4 PLACES   | ± ---  |
| 3 PLACES   | ± ---  |
| 2 PLACES   | ± 0.10 |
| 1 PLACE  | ± ---  |
| ANGULAR ± 1 °  |        |
| DRAFT WHERE APPLICABLE MUST REMAIN WITHIN DIMENSIONS |        |

|                 |            |
|-----------------|------------|
| DIMENSION STYLE |            |
| MM ONLY         |            |
| DRAWN BY        | DATE       |
| CCTEH           | 2005/10/19 |
| CHECKED BY      | DATE       |
| SRRAMESH        | 2005/11/21 |
| APPROVED BY     | DATE       |
| GGLEE           | 2005/11/21 |
| MATERIAL NO.    |            |
| SEE TABLE       |            |
| SIZE            |            |
| A3              |            |

|   |              |                        |
|---|--------------|------------------------|
| SCALE   | DESIGN UNITS | THIRD ANGLE PROJECTION |
| NTS   | METRIC       |                        |
| TITLE   |              |                        |
| DDR2 DIMM, 100MM PITCH<br>240 CKTS, SMT   |              |                        |
| MOLEX INCORPORATED  |              |                        |
| DOCUMENT NO.  |              | SHEET NO.              |
| SD-87966-002  |              | 4 OF 5                 |
| THIS DRAWING CONTAINS INFORMATION THAT IS PROPRIETARY TO MOLEX INCORPORATED AND SHOULD NOT BE USED WITHOUT WRITTEN PERMISSION |              |                        |

10 9 8 7 6 5 4 3 2 1

| ASSEMBLY PART NO. | VOLTAGE KEY POS. | PLATING                                   | LATCH COLOR | LUBRICATION |
|-------------------|------------------|---|-------------|-------------|
| 87966-0001        | CENTRE<br>1.8V   | 0.76µM (30µ IN) MIN. GOLD ON CONTACT      | BLACK       | NO          |
| 87966-0002        |                  | 2.54µM (100µ IN) MIN. TIN ON SOLDER TAILS |             | YES         |
|                   |                  | 1.27µM (50µ IN) MIN. NICKEL UNDERPLATE    |             |             |

|   |  |   |                                       |                        |   |   |   |                        |  |  |  |
|---|--|---|---------------------------------------|------------------------|---|---|---|------------------------|--|--|--|
| REVISED PAD SIZE<br>EC NO: S2007-0667<br>DRWN: CTEH<br>CHKD: SRRAMESH<br>APPR: SILENI | 2007/02/08<br>2007/02/08<br>2007/02/09 | QUALITY SYMBOLS<br> =0<br> =0 | GENERAL TOLERANCES (UNLESS SPECIFIED) |                        | DIMENSION STYLE<br>MM ONLY                              |   | SCALE<br>NTS  | DESIGN UNITS<br>METRIC |  THIRD ANGLE PROJECTION |  |  |
|   |  |   | 4 PLACES ± --- ± ---                  | DRAWN BY<br>CTEH       | DATE<br>2005/10/19                                      | TITLE<br>DDR2 DIMM, 1.00MM PITCH<br>240 CKTS, SMT |   |                        |  |  |  |
|   |  |   | 3 PLACES ± --- ± ---                  | CHECKED BY<br>SRRAMESH | DATE<br>2005/11/21                                      | MOLEX INCORPORATED                                |   |                        |  |  |  |
|   |  |   | 2 PLACES ± 0.10 ± ---                 | APPROVED BY<br>GGLEE   | DATE<br>2005/11/21                                      | MATERIAL NO.<br>SEE TABLE                         | DOCUMENT NO.<br>SD-87966-002  | SHEET NO.<br>5 OF 5    |  |  |  |
|   |  | 1 PLACE ± --- ± ---   | ANGULAR ± 1 °                         |                        | DRAFT WHERE APPLICABLE<br>MUST REMAIN WITHIN DIMENSIONS |   | THIS DRAWING CONTAINS INFORMATION THAT IS PROPRIETARY TO MOLEX INCORPORATED AND SHOULD NOT BE USED WITHOUT WRITTEN PERMISSION |                        |  |  |  |
| B1  |  | REV   |                                       |                        |   |   |   |                        |  |  |  |

9 8 7 6 5 4 3 2 1