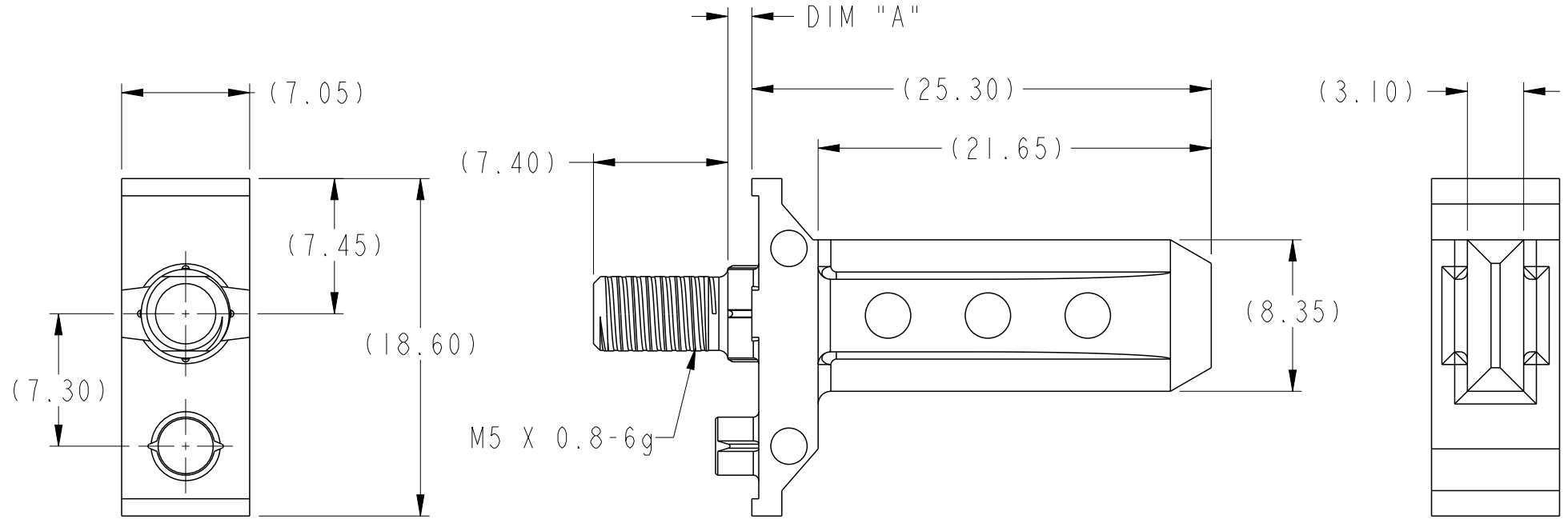


PRODUCT NUMBER
SEE TABLE, SHT 2



spec ref		dr Chen-Hong Tan		2005/08/18		projection		size A4		scale 3:1	
tolerance std		eng Terry Luo		2019/04/24						ecn no ELX-DG-33324-1	
ASME Y14.5		chr -		-						rel level Released	
-		app Heaven Cen		2019/04/25		product family AirMax VS		-		-	
surface 3.200		TOLERANCES UNLESS OTHERWISE SPECIFIED		Amphenol FCi		title 7.2mm GUIDE PIN 25.3mm LONG		dwg no 10037908		rev D	
ASME Y14.5											
		angular 0° ±2°									

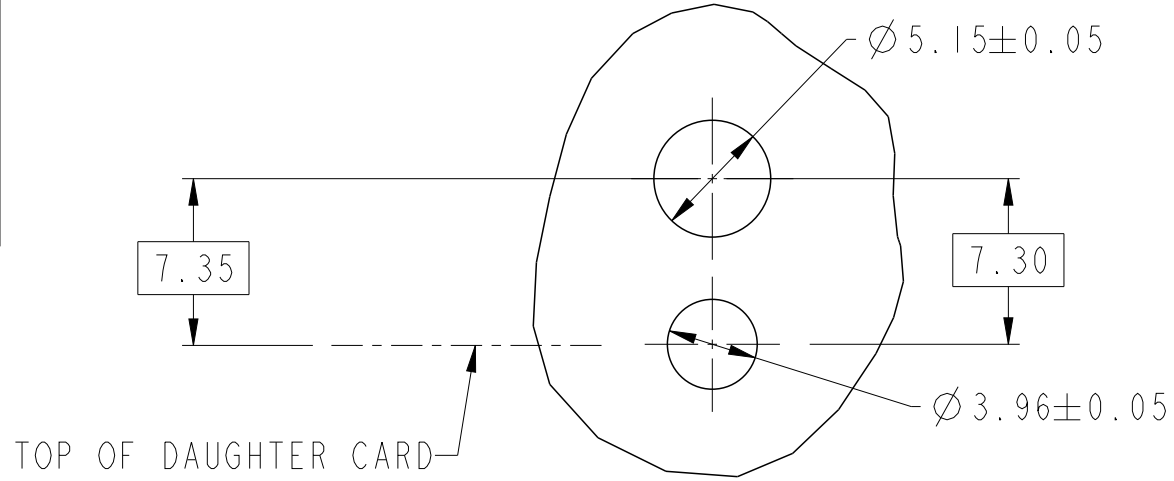
A

B

C

D

PART NUMBER	DIM "A"
10037908-101LF	1.32
10037908-102LF	2.60
10037908-103LF	4.20
10037908-104LF	5.70



SEE NOTE 3
SCALE 3:1

1. MATERIAL: ZINC ALLOY.
2. FINISH: ZINC YELLOW CHROMATE.
3. APPLICATION SPECIFICATION: GS-20-045
- ④ REFER TO CUSTOMER DRAWING 10035911 FOR INFORMATION REGARDING PCB LAYOUT OF POWER AND GUIDE MODULES RELATIVE TO SIGNAL MODULES.
5. THIS PRODUCT MEETS EUROPEAN UNION DIRECTIVES AND OTHER COUNTRY REGULATIONS AS DESCRIBED IN GS-22-008
6. PACKAGING MEETS GS-14-920 LEAD FREE LABELING SPECIFICATION.

spec ref		dr	Chen-Hong Tan	2005/08/18	projection 	MM ←→	size	A4	scale	3:1
tolerance std ASME Y14.5	TOLERANCES UNLESS OTHERWISE SPECIFIED	eng	Terry Luo	2019/04/24			ecn no	ELX-DG-33324-1		
		chr	-	-				rel level	Released	
surface	3.200	appr	Heaven Cen	2019/04/25	product family	AirMax VS				
ASME Y14.5	linear	0.X	±0.3	Amphenol FCi	title	7.2mm GUIDE PIN	dwg no	10037908	rev	D
		0.XX	±0.10							
0.XXX	±0.05									
ASME Y14.5	angular	0°	±2°	cat. no.	-	Product - Customer Drw	sheet 2 of 2			