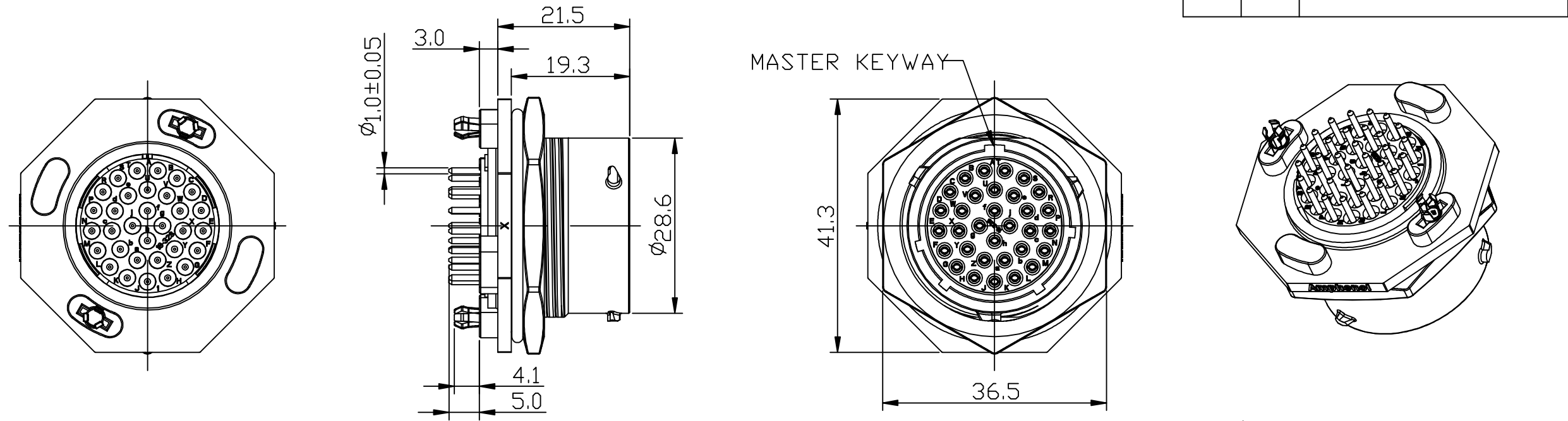
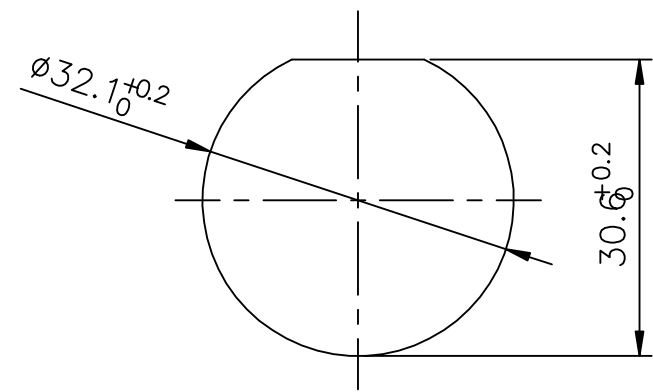


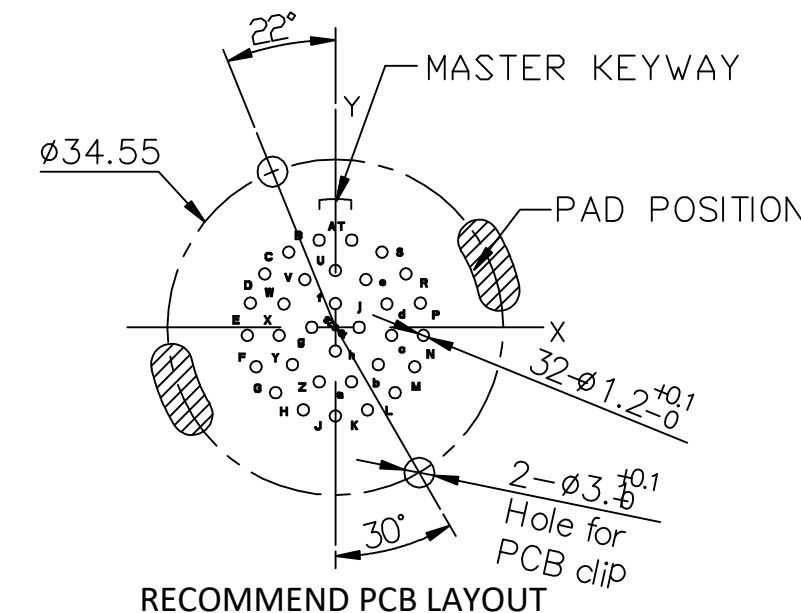
REVISIONS					
REV	ECD	DESCRIPTION	DATE	BY	APPR
A1	-	RELEASED DRAWING	Jul-26-2019	Ronald	Tommy



Position number	X	Y
A	-1.680	8.970
B	-4.800	7.750
C	-7.260	5.510
D	-8.760	2.490
E	-9.070	-0.840
F	-8.150	-4.060
G	-6.150	-6.730
H	-3.300	-8.500
J	0.000	-9.120
K	3.300	-8.500
L	6.150	-6.730
M	8.150	-4.060
N	9.070	-0.840
P	8.760	2.490
R	7.260	5.510
S	4.800	7.750
T	1.680	8.970
U	0.000	5.840
V	-3.150	4.900
W	-5.310	2.410
X	-5.790	-0.840
Y	-4.420	-3.830
Z	-1.650	-5.610
a	1.650	-5.610
b	4.420	-3.830
c	5.790	-0.840
d	5.310	2.410
e	3.150	4.900
f	0.000	2.440
g	-2.440	0.000
h	0.000	-2.440
j	2.440	0.000



RECOMMEND MOUNTING HOLE



RECOMMEND PCB LAYOUT

NOTES: (UNLESS OTHERWISE SPECIFIED)

- MATERIAL:
  - SHELL: THERMOPLASTIC, UL94 V-0.
  - INSERT: THERMOPLASTIC, UL94 V-0.
  - O-RING: NBR/SILICONE RUBBER.
  - FIXED RUBBER: NBR.
  - SEAL GASKET: NBR/SILICONE RUBBER.
  - JAM NUT: ALUMINIUM ALLOY, BLACK ANODIZING.
  - CONTACT: COPPER ALLOY.
  - LOCKING POSTS: COPPER ALLOY, TIN PLATED.
- SPECIFICATIONS:
  - 2.1 RATED CURRENT: 7.5A(MAX).
  - 2.2 RATED VOLTAGE: 250V(AC/DC).
  - 2.3 OPERATING TEMPERATURE: -40C - 125C.
  - 2.4 DIELECTRIC WITHSTANDING VOLTAGE: LESS THAN 2 MILLIAMPS CURRENT LEAKAGE@1500 VOLTS AC.
  - 2.5 INSULATION RESISTANCE: 5000 MEGOHMS MIN.
  - 2.6 IP--CLASS: IP67 AND IP69K IN THE MATED CONDITION.
  - 2.7 MATING CYCLES DURABILITY: 500 CYCLES MIN.
  - 2.8 RoHS COMPLIANT.
- SUITABLE CONTACTS: 20# CONTACT.
- ALL DIMENSIONS ARE FOR REFERENCE USE ONLY.

KEY	PART NUMBER
N	RTS718ND32S0332
W	RTS718WD32S0332
X	RTS718XD32S0332
Y	RTS718YD32S0332
Z	RTS718ZD32S0332

QUANTITY	PART NUMBER	DESCRIPTION	ITEM
<b>MATERIALS LIST</b>			

**Amphenol**

Sine Systems – www.amphenol-sine.com  
44724 Morley Drive  
Clinton Township, MI 48036

ECOMATE® AQUARIUS™, RECEPTACLE, JAM NUT,  
SIZE 18, 32POS, SOCKET, DIPSOLDER

UNLESS OTHERWISE SPECIFIED  
1) All dimensions are in metric(mm).  
2) Tolerances are as follows:  
1 PL DEC ±0.30  
2 PL DEC ±0.15  
3 PL DEC ±0.08  
Fractions ±1/64  
Angles ±1°

3) Note reference =

SIGNATURES	DATE
DRAWN: Ronald	Jul-26-2019
CHECKED: Marlin	Jul-26-2019
ENGINEER:	
APPROVAL: Tommy	Jul-26-2019

MATERIAL SPECIFICATIONS:

CUSTOMER:

THIS DRAWING IS SUPPLIED FOR INFORMATION ONLY. DESIGN FEATURES, SPECIFICATIONS AND PERFORMANCE DATA SHOWN HEREON ARE THE PROPERTY OF THE AMPHENOL CORPORATION. NO RIGHTS OF REPRODUCTION ARE IMPLIED. ALL DIMENSIONS ARE SUBJECT TO NORMAL MANUFACTURING VARIATIONS.

PROCESS SPECIFICATIONS:

NEXT ASS'Y:

SIZE	TYPE	DWG NO:	REVISION
B	C-	RTS718*D32S0332	A1

SCALE: NONE SHEET 1 OF 1

RECEPTACLE, JAM NUT, 32 POS, SOCKET CONTACT, DIPSOLDER SIZE 18  
 QTY: 10000  
 PART NO: RTS718ND32S0332  
 REV: A1  
 SH: 1  
 OF: 1