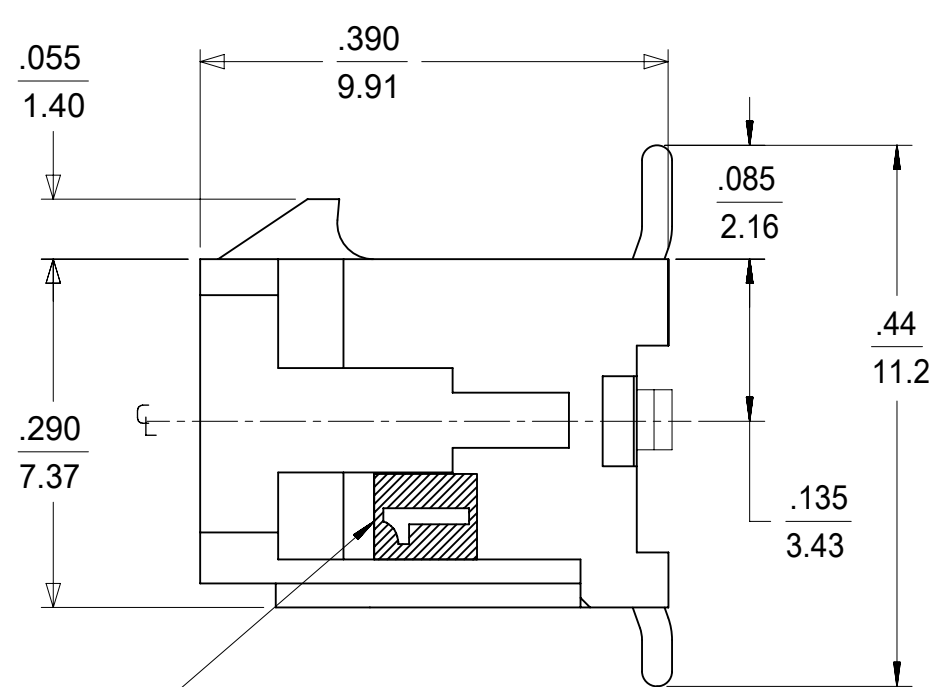
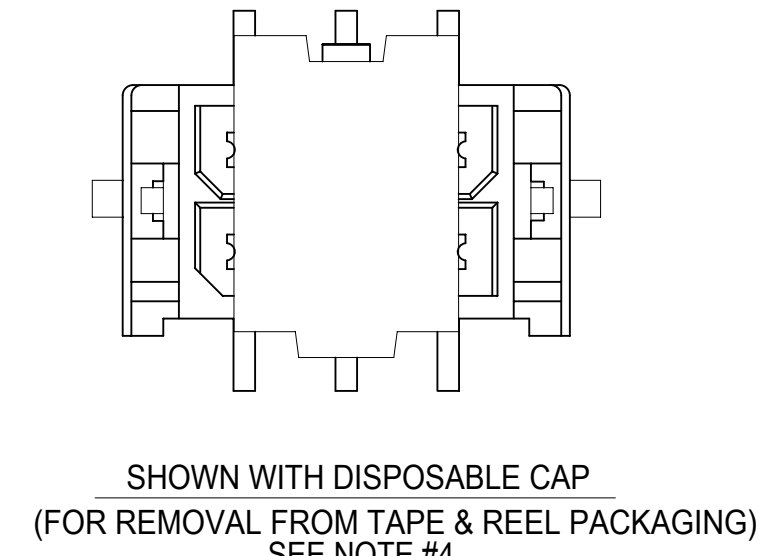
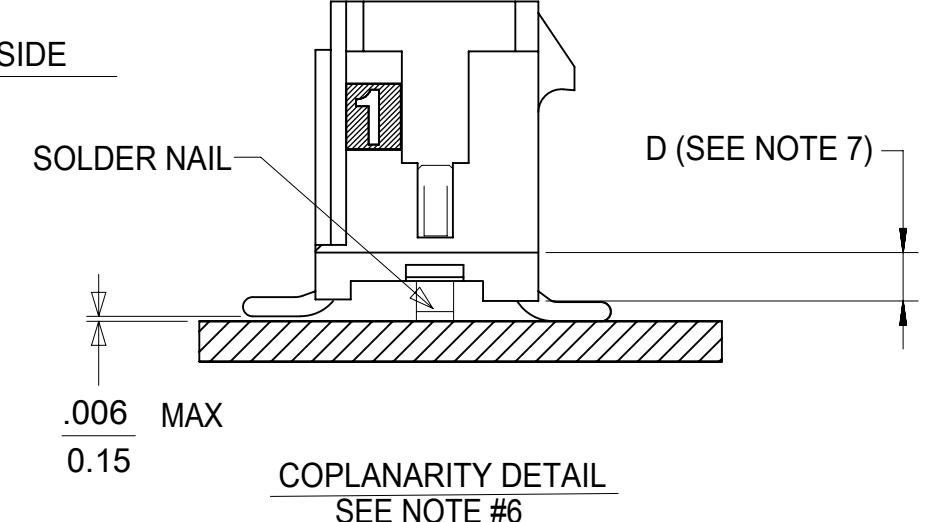
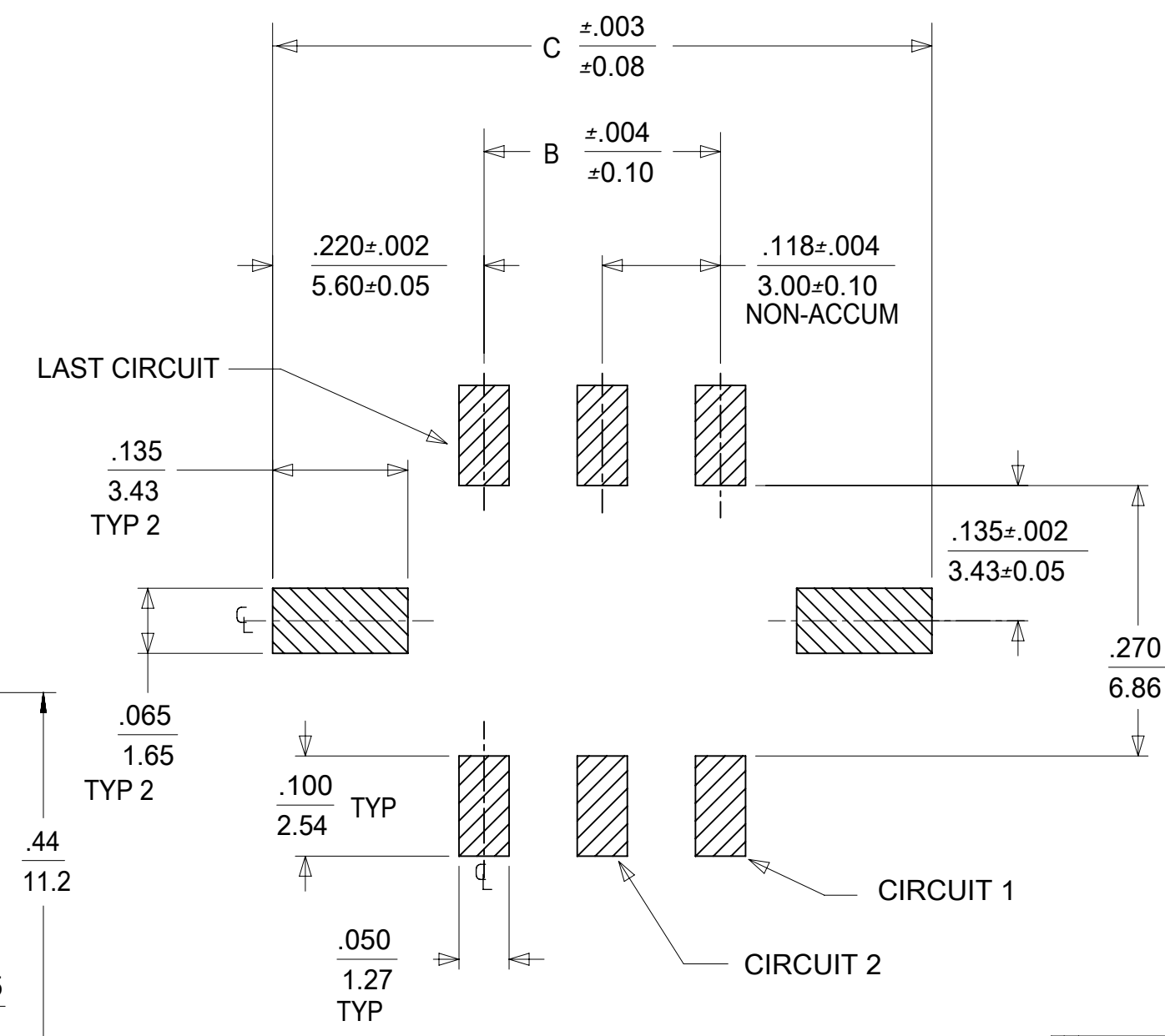


- NOTES:**
- HOUSING MATERIAL: GLASS FILLED LIQUID CRYSTAL POLYMER, UL94V-0, COLOR: BLACK  
 TERMINAL MATERIAL: BRASS ALLOY
  - FINISH:
    - A = .000060/(0.00152) MIN. REFLOWED MATTE TIN OVER .000050/(0.00127) MIN. NICKEL PLATE. (FINISH IS BRIGHT IN APPEARANCE, THICKNESS AS APPLIED PRIOR TO REFLOW)
    - B = .000015/(0.00038) MIN. SELECT GOLD IN CONTACT AREA; .000100/(0.00254) MIN. SELECT MATTE TIN ON SOLDER TAILS; BOTH OVER .000050/(0.00127) MIN. NICKEL PLATE.
    - C = .000030/(0.00076) MIN. SELECT GOLD IN CONTACT AREA; .000100/(0.00254) MIN. SELECT MATTE TIN ON SOLDER TAILS; BOTH OVER .000050/(0.00127) MIN. NICKEL PLATE.
  - PRODUCT SPECIFICATION: PS-43045
  - TAPE AND REEL PACK : SEE MOLEX DRAWING 430450002-PK
  - MATES WITH MICRO FIT (3.0) RECEPTACLE SERIES 43025
  - THE COPLANARITY DIMENSION IS ESTABLISHED BY PLACING THE ASSEMBLY ON A FLAT SURFACE. THE DISTANCE FROM THAT SURFACE TO THE BOTTOM OF ANY TERMINAL OR SOLDER NAIL MUST NOT EXCEED .006/0.15
  - CIRCUIT SIZES 2-6: "D" IS .265/6.74 FOR .010/0.25 STEP  
 CIRCUIT SIZES 8-24: "D" IS .063/1.60 FOR .010/0.25 STEP.
  - THIS PART CONFORMS TO CLASS B REQUIREMENTS OF COSMETIC SPECIFICATION PS-45499-002.
  - TEXT ON PART IS FOR REFERENCE ONLY. TEXT AND TEXT LOCATION MAY VARY DEPENDING ON PART NUMBER AND/OR TOOL.



CIRCUIT "1" IDENTIFIED ON THIS SURFACE (APPROX. LOCATION SHOWN FOR REF.)



CKTS	A	B	C
02	.262 6.65	N/A	.441 11.20
04	.380 9.65	.118 3.00	.559 14.20
06	.498 12.65	.236 6.00	.667 17.20
08	.616 15.65	.354 9.00	.795 20.20
10	.734 18.65	.472 12.00	.913 23.20
12	.852 21.65	.591 15.00	1.031 26.20
16	1.088 27.65	.827 21.00	1.268 32.20
20	1.325 33.65	1.063 27.00	1.504 38.20
22	1.443 36.65	1.181 30.00	1.622 41.20
24	1.561 39.65	1.299 33.00	1.740 44.20

FINISH A		FINISH B		FINISH C	
CKTS	MATERIAL NO:	CKTS	MATERIAL NO:	CKTS	MATERIAL NO:
04	43045-5418	04	43045-5419	04	43045-5420
		06	43045-5619		
10	43045-6018			08	43045-5820
				10	43045-6020
20	43045-7018			12	43045-6220
22	43045-7218				

THIS DRAWING CONTAINS INFORMATION THAT IS PROPRIETARY TO MOLEX ELECTRONIC TECHNOLOGIES, LLC AND SHOULD NOT BE USED WITHOUT WRITTEN PERMISSION

SYMBOLS	DIMENSION UNITS	SCALE	CURRENT REV DESC: MICROFIT PK SPEC REF
	IN/MM	NTS	
GENERAL TOLERANCES (UNLESS SPECIFIED)	MM	INCH	EC NO: 611607 DRWN: SALHAMY 2018/12/27 CHK'D: SSOUSEK 2019/08/09 APPR: FSMITH 2019/08/15
	4 PLACES ±	±	
DRAFT WHERE APPLICABLE MUST REMAIN WITHIN DIMENSIONS	3 PLACES ±	± 0.01	INITIAL REVISION: DRWN: RHOLTS 2000/07/16 APPR: FSMITH 2004/07/16
	2 PLACES ±	0.25 ± 0.014	
THIRD ANGLE PROJECTION	1 PLACE ±	0.36 ±	DRAWING SERIES C-SIZE 43045
	0 PLACES ±	±	
DRAWING SERIES	ANGULAR TOL	± 0.5 °	MATERIAL NUMBER CUSTOMER SHEET NUMBER SEE CHART GENERAL MARKET 1 OF 1

**molex**

MICROFIT(3.0) VERTICAL SMT NAIL CAP (LF)  
DUAL ROW HEADER / TAPE / LEAD-FREE

PRODUCT CUSTOMER DRAWING

DOCUMENT NUMBER: SD-43045-021 | DOC TYPE: PSD | DOC PART: 001 | REVISION: C4

DOCUMENT STATUS: P1 | RELEASE DATE: 2019/08/15 16:29:02