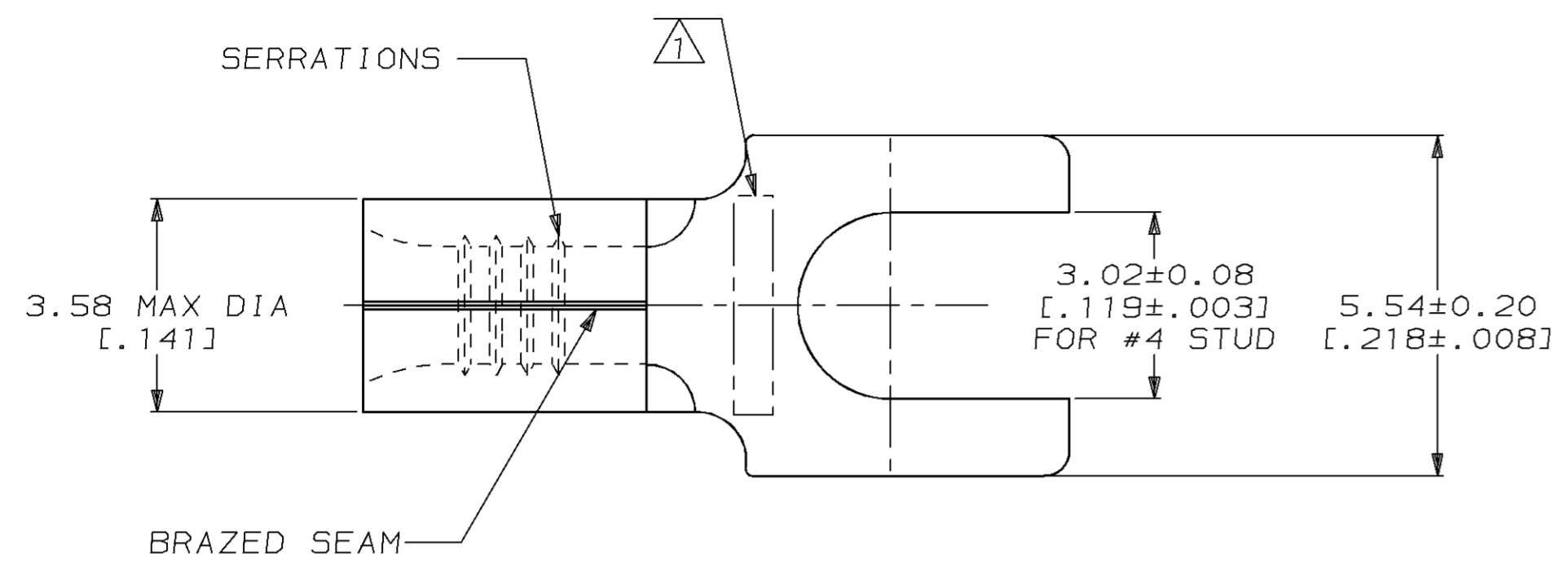


THIS DRAWING IS UNPUBLISHED. RELEASED FOR PUBLICATION ,19 .  
 © COPYRIGHT 19 BY AMP INCORPORATED. ALL INTERNATIONAL RIGHTS RESERVED.

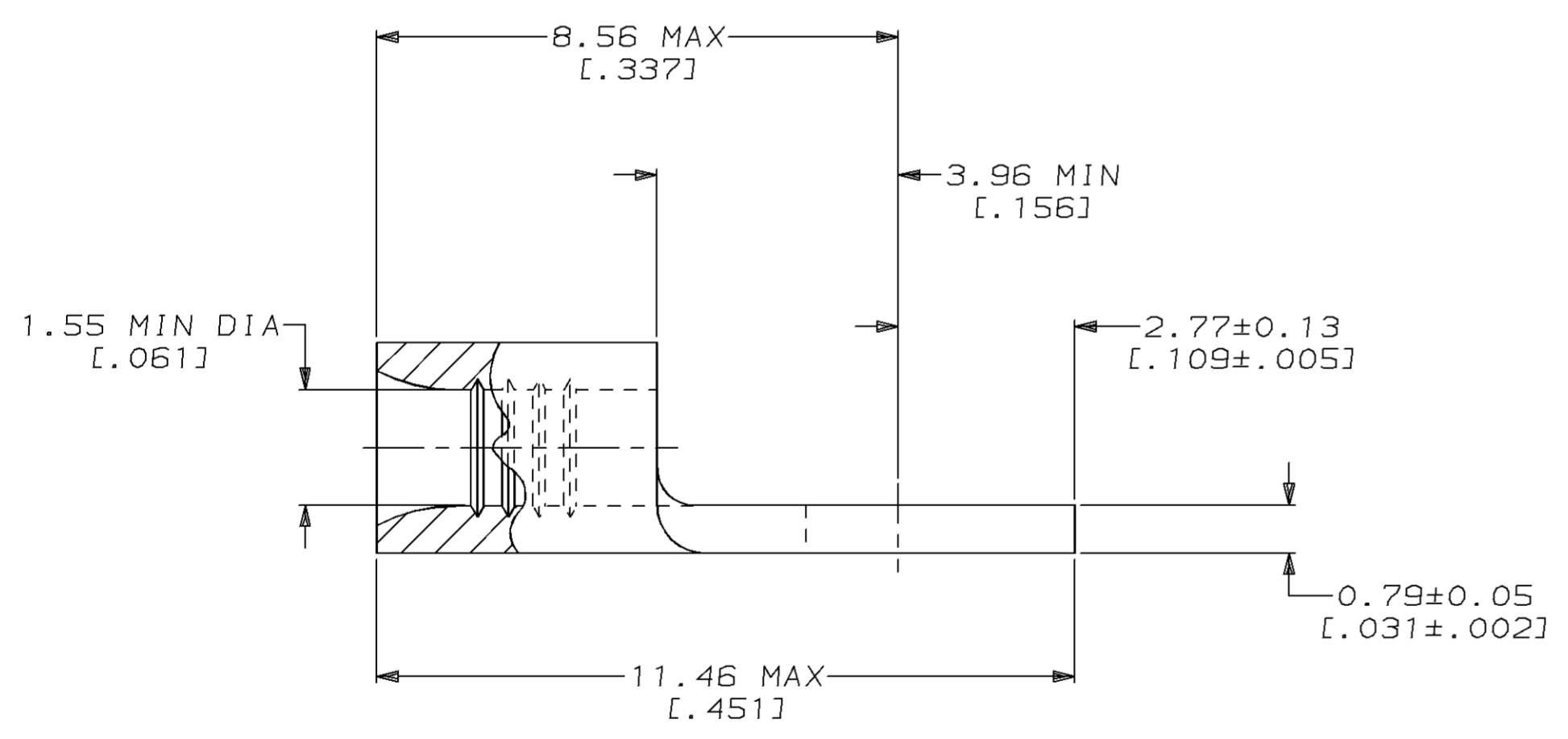
| LOC | DIST | P | F | ZONE | LTR | DESCRIPTION              | DATE    | APPD |
|-----|------|---|---|------|-----|--------------------------|---------|------|
| G   | 14   |   |   |      | F   | REVISED PER 0720-0962-96 | 06JUN96 | MJS  |

**METRIC**  
 DIMENSIONS LISTED IN mm [ INCHES ]



|                                |                                |
|--------------------------------|--------------------------------|
| <b>AMP</b><br>WIRE RANGE       | <b>UL</b> E13288<br>Listed     |
| 22-16 AWG<br>SOLID OR STRANDED | 22-16 AWG<br>SOLID OR STRANDED |
| <b>SR</b> LR7189<br>Certified  | MILITARY P/N<br>AND CLASS      |
| 22-16 AWG<br>SOLID OR STRANDED | NOT APPLICABLE                 |

⚠ STAMP AMP 22-18\* APPROX AS SHOWN  
 22-16 TERMINALS ARE STAMPED 22-18 IN  
 ACCORDANCE WITH MILITARY SPECIFICATION  
 MIL-T-7928; COMMERCIAL WIRE RANGE IS 22-16



|          |          |                |            |
|----------|----------|----------------|------------|
| OBSOLETE | -5000    | ON TAPE        | 2 321463 1 |
|          | ----     | LOOSE PIECE    | 321463     |
|          | QUANTITY | PACKAGING TYPE | PART NO    |

|   |  |  |  |   |  |
|---|--|--|--|---|--|
| <b>AMP INCORPORATED</b><br>CUSTOMER SERVICE SYSTEMS                                       |  | MAX RECOMMENDED OPERATING TEMPERATURE:<br>170°C MAX  | DO NOT SCALE PRINT.<br>UNLESS SPECIFIED<br>DIMENSIONS IN mm [INCHES]<br>TOLERANCES ON:<br>2 PLC DEC ± -<br>3 PLC DEC ± -<br>ANGLES ± - | DR 3-26-93<br>TA BRINKMAN<br>CHK 3-26-93<br>DA PATTERSON<br>APPD 3-26-93<br>DE MILLER<br>APPD 3-26-93<br>JL MECKLEY<br>PRODUCT SPEC -<br>APPLICATION SPEC -<br>WEIGHT - | <b>AMP</b> AMP Incorporated<br>Harrisburg, PA 17105-3608<br>NAME<br>TERMINAL, SPADE<br>TONGUE, SOLISTRAND™ |
| FOR ADDITIONAL<br>PRODUCT INFORMATION OR<br>COPIES OF DRAWINGS<br>AND TECHNICAL DOCUMENTS | PRODUCT INFORMATION CENTER<br>1-800-522-6752 | VOLTAGE RATING:<br>NOT APPLICABLE  | MATERIAL<br>COPPER PER<br>ASTM B-152<br>ANNEALED   | FINISH<br>TIN PLATE<br>0.00254 [.000100] MIN<br>THK PER MIL-T-10727   | SIZE<br>C 00779<br>DRAWING NO<br>G=321463  |
| FOR APPLICATION<br>TOOLING INFORMATION  | TOOLING ASSISTANCE CENTER<br>1-800-722-1111  | WIRE CROSS SECTIONAL AREA RANGE:<br>0.26-1.65mm² [509-3,260] CIR MILS<br>SOLID OR STRANDED   |  |   | SCALE 10:1   |
| FOR ORDER ENTRY   | 1-800-526-5142                               | THIS DRAWING IS A CONTROLLED DOCUMENT FOR<br>AMP INCORPORATED. IT IS SUBJECT TO CHANGE<br>AND THE CONTROLLING ENGINEERING ORGANIZATION<br>SHOULD BE CONTACTED FOR THE LATEST REVISION. |  |   | SHEET 1 OF 1   |