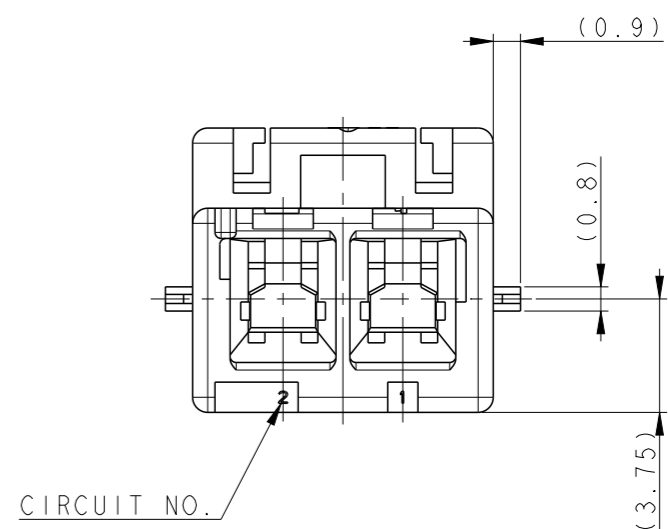
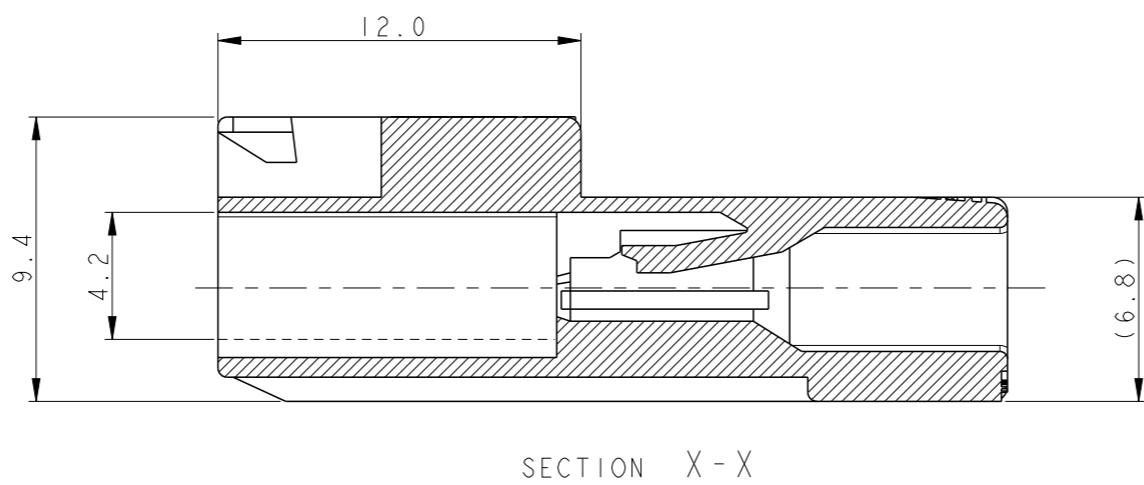
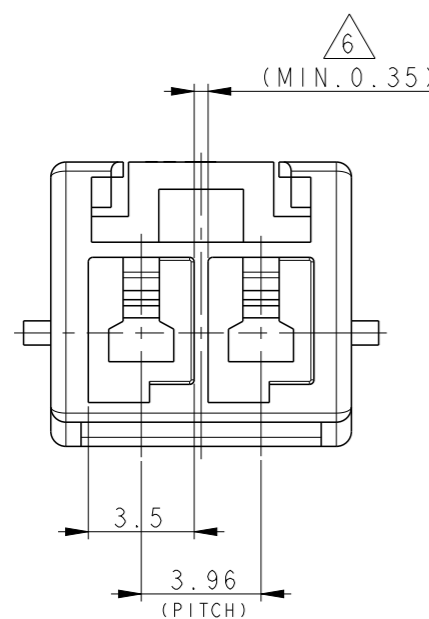
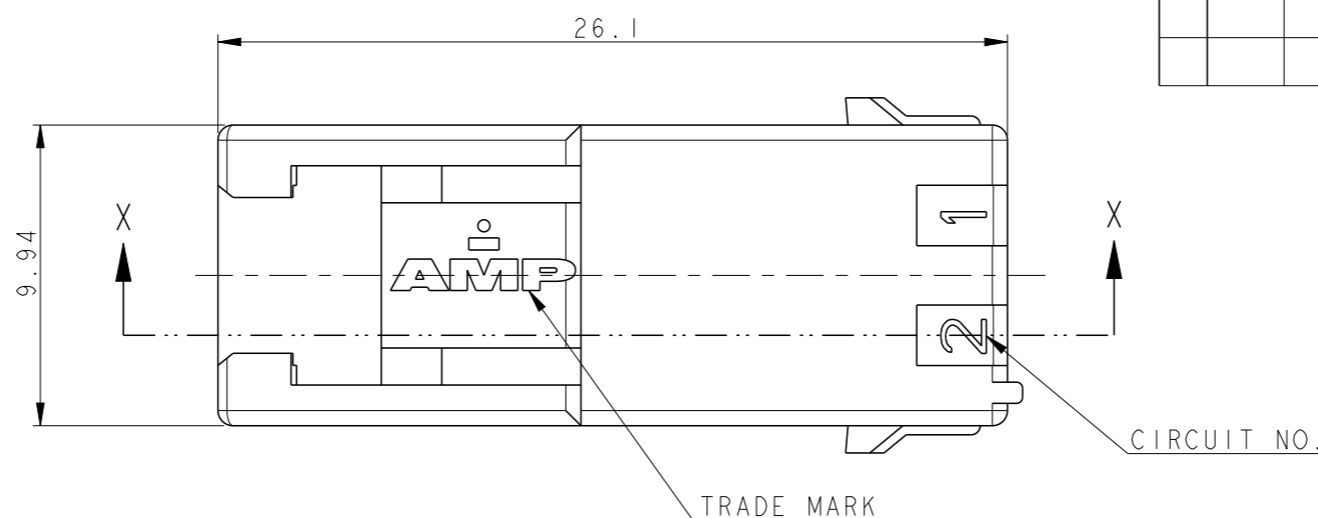


P	LTR	DESCRIPTION	DATE	DWN	APVD
	B	REVISED PER ECR-18-016962	29OCT2018	SC	BH



- NOTE;
1. APPLICABLE CONTACT P/N
-TAB CONTACT: 177917-□ (AWG#16-#20)
177916-□ (AWG#22-#26)
 2. MATING CONN. P/N
-PLUG HSG: 2005247-□
-REC CONTACT: 177915-□ (AWG#16-#20)
: 177914-□ (AWG#22-#26)
 3. APPLICABLE DOUBLE LOCK PLATE:
177918-1(V-0) / □ -368590-1(V-2,GWT)
*IT SHOULD BE USED CERTAINLY WHEN CABLE ASS'Y
 4. GENERAL TOLERANCES: ±0.3
 5. MATERIAL: PA66, UL94V-0, GWIT 775°C, GWEPT 750°C,
CTI 250V AND BALL PRESSURE 125°C
 6. MIN. THICKNESS OF INSULATING WALL

2005248-9	BLACK
2005248-6	BLUE
2005248-4	YELLOW
2005248-2	RED
2005248-1	NATURAL
P/N	COLOR

THIS DRAWING IS A CONTROLLED DOCUMENT.		DWN SC KIM		TE Connectivity			
DIMENSIONS: mm		CHK BW KANG				NAME PDL 2P CAP HSG 3.96mm F/H (GWT)	
TOLERANCES UNLESS OTHERWISE SPECIFIED:		APVD JK SONG				PRODUCT SPEC 108-61106	
0 PLC ±- 1 PLC ±- 2 PLC ±- 3 PLC ±- 4 PLC ±- ANGLES ±- MATERIAL FINISH -		PRODUCT SPEC 108-61106				APPLICATION SPEC -	
MATERIAL		WEIGHT -		SIZE A3			
5		CUSTOMER DRAWING		CAGE CODE 00779			
				DRAWING NO. C-2005248			
				RESTRICTED TO			
				SCALE 4:1 SHEET 1 OF 1 REV B			