

4

3

2

1

THIS DRAWING IS UNPUBLISHED.

RELEASED FOR PUBLICATION

© COPYRIGHT

ALL RIGHTS RESERVED.

LOC DIST

REVISIONS

P	LTR	DESCRIPTION	DATE	DWN	APVD
	F2	ECR-13-005640	03APR2013	XZ	LZ

REPLACED BY OCEAN STYLE APPLICATOR PART NUMBER 2151468-1

FOR REPLACEMENT PARTS FOR APPLICATOR 1528150
REFER TO ADDITIONAL PAGE(S). SPARE PARTS KIT (IF LISTED)
WILL REMAIN AVAILABLE.

THE REPLACEMENT OCEAN STYLE APPLICATOR HAS THE
SAME TERMINATOR/PRESS INTERFACE AS APPLICATOR
1528150

Dimensioning and tolerancing per ASME Y14.5M-2009


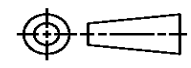
B

A

Dimensioning and tolerancing per ASME Y14.5M-2009

B

A

THIS DRAWING IS A CONTROLLED DOCUMENT.		DWN X. ZHAO	 TE Connectivity		
DIMENSIONS:		CHK L. ZHANG			
		APVD L. ZHANG	NAME		
TOLERANCES UNLESS OTHERWISE SPECIFIED:		PRODUCT SPEC	FINE ADJ SIDE FD HD-I APPL		
0 PLC ± 1 PLC ± 2 PLC ± 3 PLC ± 4 PLC ± ANGLES ±		APPLICATION SPEC	SIZE	CAGE CODE	DRAWING NO
MATERIAL		WEIGHT	A3		©- 1528150
FINISH		SCALE		SHEET 1 OF 2	REV F2

Dimensioning and tolerancing per ASME Y14.5M-2009

THIS DRAWING IS UNPUBLISHED. RELEASED FOR PUBLICATION.
 BY TYCO ELECTRONICS CORPORATION. ALL RIGHTS RESERVED.

LOC	DIST	REVISONS					
A	66	P	LTR	DESCRIPTION	DATE	DWN	APVD
		F1		ECR-08-017380	7-2008	MY	GB

PART NUMBER	REV	FIRST USED	TERMINATOR	FEED TYPE	DESCRIPTION
1528150-1	F	-	LEADMAKER	MECH POST FEED	CUTS CARRIER
1528150-2	F	-	BENCH	MECH PRE FEED	CUTS CARRIER
1528150-6	F	-	LEADMAKER	MECH POST FEED	CONTINUOUS CARRIER
7-1528150-1	F	-	LEADMAKER	MECH POST FEED	-1 AND SPARE PARTS
7-1528150-2	F	-	BENCH	MECH PRE FEED	-2 AND SPARE PARTS
7-1528150-6	F	-	LEADMAKER	MECH POST FEED	-6 AND SPARE PARTS
7-1528150-7	C	-	LEADMAKER	-	SPARE PARTS KIT FOR -1/-6/7-1/7-6
7-1528150-8	C	-	BENCH	-	SPARE PARTS KIT FOR -2 & 7-2

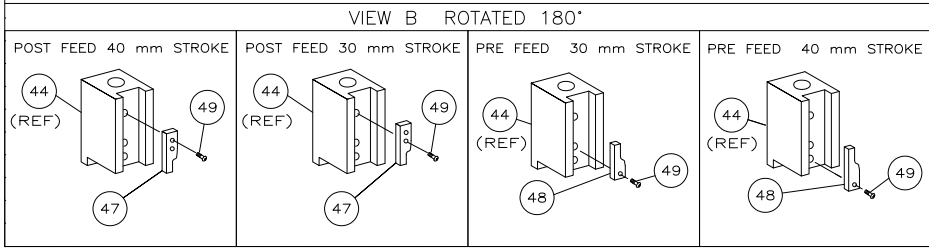
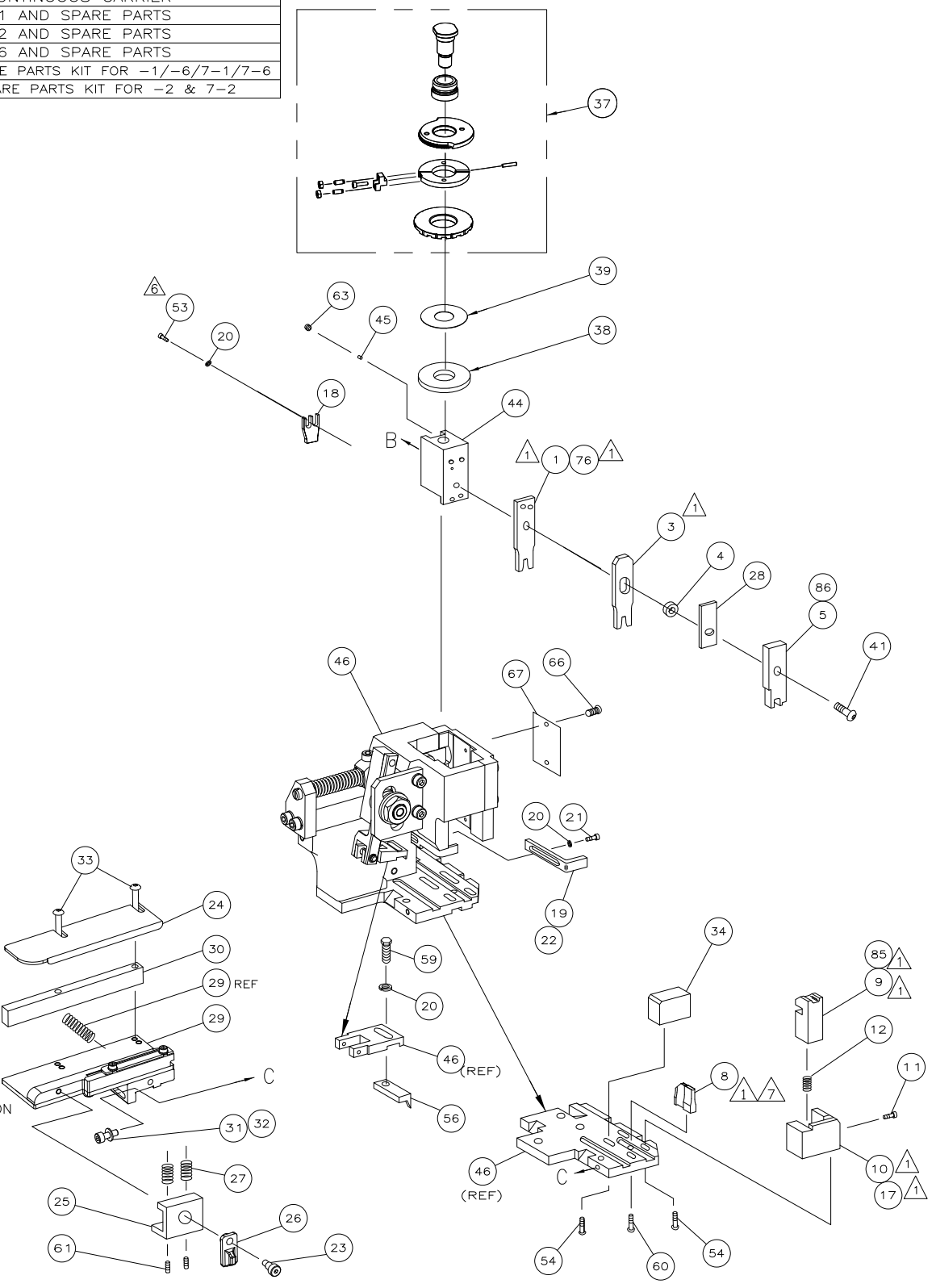
CRIMP DATA AMP TERMINAL AMP CRIMP SPECS			
TERMINAL NAME: AMP MCP 1.2 - CB			
CRIMP	SIZE	TYPE	RANGE
WIRE	1.78 [.070 IN]	F	1.00-1.50mm ² or 18-16 AWG
INSUL	2.29 [.090 IN]	SPECIAL	1.90-2.40 [.075-.094 IN]
WIRE STRIP LENGTH		APPL INSTRUCTION	
3.00-3.60 [.118-.142 IN]		408-8322 & 408-8490	
TERMINAL APPL SPEC	114-18464		FEED 7.50 [.295 IN]

TERMINALS APPLIED			
1452503	-	-	-
-	-	-	-
-	-	-	-
-	-	-	-
-	-	-	-
-	-	-	-
-	-	-	-

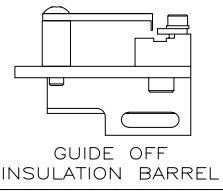
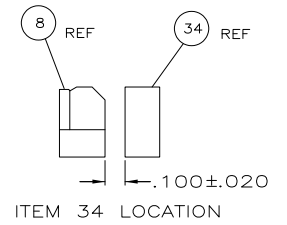
WIRE SIZE mm ² AWG	CRIMP HEIGHT *	REF SETTING
1.50mm ²	1.36 ±0.05 [.054 ±0.002 IN]	B3
16 AWG	1.31 ±0.05 [.052 ±0.002 IN]	B6
2x0.50mm ² or 1.00mm ²	1.18 ±0.05 [.046 ±0.002 IN]	C6
18 AWG	1.11 ±0.05 [.044 ±0.002 IN]	D3

SET UP GAGE	LAYOUT
458637-3	L1426418

- 1. RECOMMENDED SPARE PARTS.
- 2. GREASE RAM, CAM, CAM FOLLOWER AND FEED ROD LIGHTLY.
- 3. LUBRICATE DAILY PER THE APPLICATOR INSTRUCTION SHEET SUPPLIED WITH THE APPLICATOR.
- 4. THIS APPLICATOR HAS BEEN DESIGNED TO APPLY WIRES WITH THIN WALL (FLR) INSULATION.
- 5. MAXIMUM INSULATION CRIMP WIDTH 2.45mm & MAXIMUM INSULATION CRIMP HEIGHT 2.45mm. SEE APPLICATION SPECIFICATION TO CLARIFY.
- 6. CUT TO LENGTH AT ASSY.
- 7. DUE TO THE DEMANDS OF APPLICATION SPEC 114-18464 IT IS IMPORTANT, IF THE ANVIL IS MOVED OR REPLACED, THAT IT IS BIASED TOWARDS THE OPERATOR'S POSITION AS FAR AS POSSIBLE WHEN RE-SECURING TO THE BASE PLATE.



*** WARNING:**
 ON INSTALLATION, SET WIRE DISC TO LARGEST WIRE SIZE SETTING. USE OF SETTINGS BELOW MIN REQUIRED CRIMP HEIGHT SETTING WILL CAUSE DAMAGE TO CRIMP TOOLING.



TOOLING APPROVED BY GB GATD & TERMINAL PRODUCT ENGINEERING GERMANY.

QTY	REQD	PER	ASSY	PART NO	DESCRIPTION	ITEM NO	
-	-	1	1	1	562605-2	DEPRESSOR, SHEAR ASSY	86
-	-	1	1	1	1-879745-2	SHEAR, FLOAT (FRONT)	85
-	-	1	2	-	1-1752057-3	CRIMPER, WIRE, STEPPED	76
-	-	1	1	1	1528150	PRINT, APPLICATOR LOG SHEET	72
-	-	1	1	1	1338705-3	DOCUMENTATION PACKAGE	71
-	-	1	1	1	461264-5	PLATE, IDENTIFICATION	68
-	-	2	2	2	21017-2	SCR,DRIVE(#2x.19)ID PLATE	66
-	-	1	1	1	3-18031-0	SCR,SKT SET(M6X6)RAM	63
-	-	2	2	2	2-18032-5	SCR,SET(M5X20)DRAG	61
-	-	1	1	1	18024-7	SCR,BHC(M4X10)ANVIL	60
-	-	1	1	1	5-18022-2	SCR,HEX(M4X8)FEED FINGER	59
-	-	1	1	1	1338685-1	PAWL, FEED	56
-	-	4	4	4	18024-8	SCR,BHC(M4X12)SHEAR HOLDER	54
-	-	2	2	2	1-18023-2	SCR,SHC(M4X12)TERM HLD DWN	53
-	-	1	1	1	18024-3	SCR,BHC(M3X10)CAM	49
-	-	1	-	-	1338675-1	CAM, PRE FEED 30 & 40 mm ST	48
-	-	1	-	-	1338676-1	CAM, POST FEED 30 & 40 mm ST	47
-	-	1	1	1	1320999-3	APPLICATOR BASIC SUBASSY	46
-	-	1	1	1	690191-1	PLUG, NYLON	45
-	-	1	1	1	1338660-1	RAM	44
-	-	1	1	1	2-18024-6	SCR,BHC(M8X25)RAM	41
-	-	1	1	1	690125-1	SHIM SUBASSY	39
-	-	1	1	1	469367-9	SPACER, FINE ADJUST	38
-	-	1	1	1	879103-3	FINE ADJUST HEAD SUBASSY	37
-	-	1	1	1	1320934-6	SUPPORT, TERMINAL	34
-	-	2	2	2	1-18024-0	SCR,BHC(M4X20)STRIP GUIDE	33
-	-	1	1	1	18027-2	WASHER, FLAT(M4)	32
-	-	1	1	1	1-18023-2	SCR,SKT CAP(M4X12)MOUNT BLOCK	31
-	-	1	1	1	1320908-1	SPACER, STRIP GUIDE	30
-	-	1	1	1	1633073-2	STRIP GUIDE PLATE ASSY	29
-	-	1	1	1	455888-6	SPACER, CRIMPER	28
-	-	2	2	2	1-22284-0	SPRING, DRAG	27
-	-	1	1	1	356835-1	LEVER, DRAG RELEASE	26
-	-	1	1	1	240792-1	DRAG, TERMINAL	25
-	-	1	1	1	1320928-1	PLATE, STRIP GUIDE	24
-	-	1	1	1	980371-4	SCR,SHC SHLD	23
-	-	1	-	-	690472-5	STRIPPER	22
-	-	1	1	1	1-18023-1	SCR,SHC(M4X10)STRIPPER	21
-	-	4	4	4	18025-2	WASHER,LOCK(M4)STRIPPER	20
-	-	1	-	-	1424364-1	STRIPPER	19
-	-	1	1	1	1333264-1	HOLDER, TERMINAL	18
-	-	1	-	-	1338684-1	HOLDER, SHEAR, FRONT (NO-CUT)	17
-	-	1	1	1	3-22280-3	SPRING, SHEAR	12
-	-	1	1	1	356885-4	STOP, SHEAR	11
-	-	1	1	1	1320921-1	HOLDER, SHEAR, FRONT (CUT)	10
-	-	1	1	1	1-462006-6	SHEAR, FLOAT (FRONT)	9
-	-	1	1	1	4-1333203-2	ANVIL	8
-	-	1	1	1	1-455889-4	DEPRESSOR, SHEAR (FRONT)	5
-	-	1	1	1	4-238011-2	SPACER, BLOCK CRIMPER	4
-	-	1	1	1	1752766-2	CRIMPER, INSULATION	3
-	-	1	1	1	1633169-2	CRIMPER, WIRE	1

THIS DRAWING IS A CONTROLLED DOCUMENT.		OWN: LLOFHOUSE	25FEB03	Tyco Electronics Corporation Harrisburg, PA 17105-3608	
DIMENSIONS: INCHES		APVD: F BACKHURST	25FEB03	NAME: FINE ADJ SIDE FD HD-I APPL	
TOLERANCES UNLESS OTHERWISE SPECIFIED:		APPLICATION SPEC: -			
0 PLC	±	SIZE: A1			
1 PLC	±	CAGE CODE: 00779			
2 PLC	±	DRAWING NO: 1528150			
3 PLC	±	RESTRICTED TO: -			
4 PLC	±	CUSTOMER DRAWING: -			
ANGLES	±	SCALE: -			
FINISH	-	SHEET 1 OF 1			