

BILL OF MATERIALS

NO.	QTY	SUPPLIER	DESCRIPTION	PART No.	SEE NOTE
1	17	PAN	MALE CRIMP TERMINAL	95065-CM2	1,2
2	1	PAN	25 POSITION MALE DSUB CONNECTOR	95065-C25T	1,2,4
3	2	ELDON ELECTRONICS	SHELL/SCREW KIT	6260-0101-03	1,2
4	1	MOLEX	17 CORE CABLE SEE CABLE SPECIFICATION	99036-0065	2,4
5	1	BRADY	LABEL	THT-9-427-10	1,2,3
6	1	PAN	25 POSITION FEMALE DSUB CONNECTOR	95066-C25T	1,2,4
7	17	PAN	FEMALE CRIMP TERMINAL	95066-CF2	1,2

WIRING DIAGRAM : 17 CORE CABLE

2		4		6	
25 POS. D SUB MALE CONN. A		17 CORE CABLE		25 POS. D SUB FEMALE CONN B	
CIRCUIT No.	CONDUCTOR No.	CIRCUIT No.	CONDUCTOR No.	CIRCUIT No.	CONDUCTOR COLOUR REF
2	1	2	1	2	RED
3	2	3	2	3	BLUE
4	3	4	3	4	GREEN
5	4	5	4	5	YELLOW
6	5	6	5	6	WHITE
7	6	7	6	7	BLACK
8	7	8	7	8	BROWN
11	8	11	8	11	VIOLET
15	9	15	9	15	ORANGE
17	10	17	10	17	PINK
18	11	18	11	18	TURQOISE
20	12	20	12	20	GREY
21	13	21	13	21	RED/BLUE
22	14	22	14	22	GREEN/RED
23	15	23	15	23	YELLOW/RED
24	16	24	16	24	WHITE/RED
25	17	25	17	25	RED/BLACK

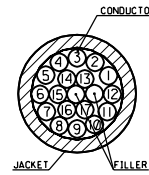
4 CABLE SPECIFICATION : 17 CORE CABLE

1. CABLE TYPE: FLAT RIBBON ROUND OTHER
 SPIRAL CABLE YES NO
 NO. OF CONDUCTORS 17

2. CABLE REQUIREMENTS : CABLE MUST UNWIND FROM REEL WITH ORIENTATION AS PER DIAGRAM BELOW

3. CONDUCTOR SPECIFICATIONS :

CONDUCTOR NO.		COLOURS:
1 - 17		1. RED
CONDUCTOR :		2. BLUE
- MATERIAL		3. GREEN
- A.W.G.		4. YELLOW
- STRANDING QTY/GUAGE		5. WHITE
- TENSILE STRENGTH		6. BLACK
INSULATION :		7. BROWN
- MATERIAL		8. VIOLET
- TEMPERATURE RATING		9. ORANGE
- VOLTAGE RATING		10. PINK
- NOM. WALL THICKNESS		11. TURQUOISE
- COLOUR		12. GREY
SEE CABLE DIAGRAM/COLOUR CODE		13. RED/BLUE
- OUTSIDE DIAMETER		14. GREEN/RED
DIRECTION OF LAY		15. YELLOW/RED
LENGTH OF LAY		16. WHITE/RED
U.L. RATING		17. RED/BLACK



SCALE 5:1

4. FILLER : ENOUGH TO MAKE CABLE ROUND

5. SEPARATOR : TYPE MYLAR BINDER
LAY DIRECTION N/A

6. SHIELD : FOIL TYPE N/A
FOIL PACING N/A

7. DRAIN WIRE : GAUGE N/A
STRANDING N/A
REQUIREMENT N/A

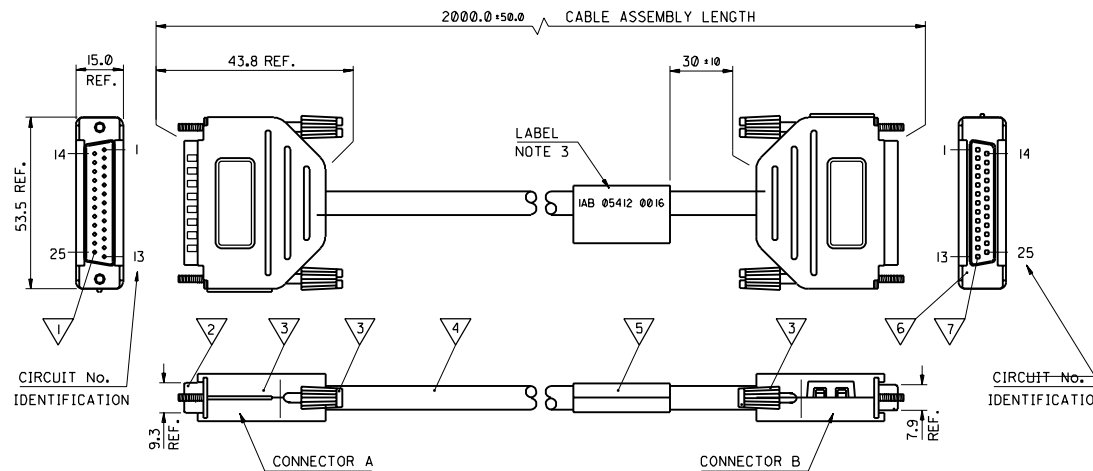
8. SPIRAL/BRAID : GAUGE N/A
COPPER TYPE N/A
COVERAGE

9. CABLE JACKET : TYPE PVC
TEMP. RATING 80°C
VOLTAGE RATING 500V
FINAL DIAMETER 7.40 ± 0.20
NOM. THICKNESS 0.90 ± 0.20
COLOUR BLACK
FINISH GLOSS
U.L. RATING N/A
HARDNESS 84 SHORE A
STRIPABILITY GOOD
MARKINGS N/A

NOTES:-

- SUPPLIER OR CUSTOMER APPROVED EQUIVALENT.
- ONLY AVAILABLE FROM MOLEX AS PART OF A CABLE ASSEMBLY.
- LABEL TO BE PRINTED WITH PART NO. IAB 05412 0016.
- ASSEMBLIES TESTED FOR SHORTS AND DISCONTINUITIES BETWEEN ALL CIRCUITS.
- PARTS TO BE PACKED INDIVIDUALLY IN BAGS AND LABELLED AS SHOWN, YEAR AND MONTH, "XX", TO BE PRINTED ACCORDING TO IEC 62 INDEX 5.1.

MOLEX 92605-0004
XX MXI



ORIGINAL ISSUE	REVISIONS	DRWG BY	SCALE
EN 17/086	1	AMC	1:1

CONDUCTOR NO.	COLOURS
1	RED
2	BLUE
3	GREEN
4	YELLOW
5	WHITE
6	BLACK
7	BROWN
8	VIOLET
9	ORANGE
10	PINK
11	TURQUOISE
12	GREY
13	RED/BLUE
14	GREEN/RED
15	YELLOW/RED
16	WHITE/RED
17	RED/BLACK

REVISE ONLY ON CAD SYSTEM

CAD/CAM FILE NAME: SDA92605.DGN

TITLE: 25 POS MALE TO 25 POS FEMALE DSUB HARNESS ASSEMBLY

MOLEX EUROPE

PART NO. 92605-0004

DWG NO. SDA-92605-0004

SHEET NO. 1 OF 1

DATE: 97/05/12

SIZE: C

PART NO. 92605-0004
REV. 001
SDA-92605-0004