

735278 ✓ ACTIVE

FASTON | FASTON 250

TE Internal #: 735278

Quick Disconnects, Receptacle, 17 – 15 AWG Wire Size, 1 – 1.5 mm² Wire Size, 1980 – 3260 CMA Wire Size, Mating Tab Width 6.35 mm [.25 in], FASTON 250

[View on TE.com >](#)



Terminals & Splices > Quick Disconnects



Quick Disconnect Terminal Type: **Receptacle**

Wire Size: **1980 – 3260 CMA**

Mating Tab Width: **6.35 mm [.25 in]**

Features

Product Type Features

Insertion Force	Normal
-----------------	--------

Configuration Features

Compatible With Wire & Cable Type	Discrete Wire
-----------------------------------	---------------

Electrical Characteristics

Voltage Rating	300 V
----------------	-------

Body Features

Insulation Material	Nylon
---------------------	-------

Contact Features

Quick Disconnect Terminal Type	Receptacle
--------------------------------	------------

Mating Tab Width	6.35 mm [.25 in]
------------------	------------------

Mating Tab Thickness	.81 mm [.032 in]
----------------------	------------------

Terminal Orientation	Straight
----------------------	----------

Contact Base Material	Brass
-----------------------	-------

Terminal Plating Material	Tin
---------------------------	-----

Crimp Type	Compression
------------	-------------

Barrel Type	Closed
-------------	--------

Termination Features

Product Terminates To	Wire & Cable
-----------------------	--------------



Mechanical Attachment

Wire Insulation Support	With
Mating Retention Type	Dimple

Dimensions

Product Length	21.6 mm[.85 in]
Compatible Insulation Diameter Range	3.3 mm[.13 in]
Wire Size	1980 – 3260 CMA

Usage Conditions

Insulation Option	Fully Insulated
Operating Temperature Range	105 °C[221 °F]

Packaging Features

Packaging Quantity	100
Packaging Method	Bag

Other

Barrel Color	Red
Terminals & Splices Comment	CERTI-CRIMP Hand Tool P/N 90035-3 is for Wire Range [0.3 - 1.0]mm ² CERTI-CRIMP Hand Tool P/N 47386-4 is for Wire Range [1.0 - 1.5]mm ² , Fully Insulated

Product Compliance

[For compliance documentation, visit the product page on TE.com>](#)

EU RoHS Directive 2011/65/EU	Compliant
EU ELV Directive 2000/53/EC	Compliant
China RoHS 2 Directive MIIT Order No 32, 2016	No Restricted Materials Above Threshold
EU REACH Regulation (EC) No. 1907/2006	Current ECHA Candidate List: JUNE 2023 (235) Candidate List Declared Against: JAN 2023 (233) Does not contain REACH SVHC
Halogen Content	Low Halogen - Br, Cl, F, I < 900 ppm per homogenous material. Also BFR/CFR/PVC Free
Solder Process Capability	Not applicable for solder process capability

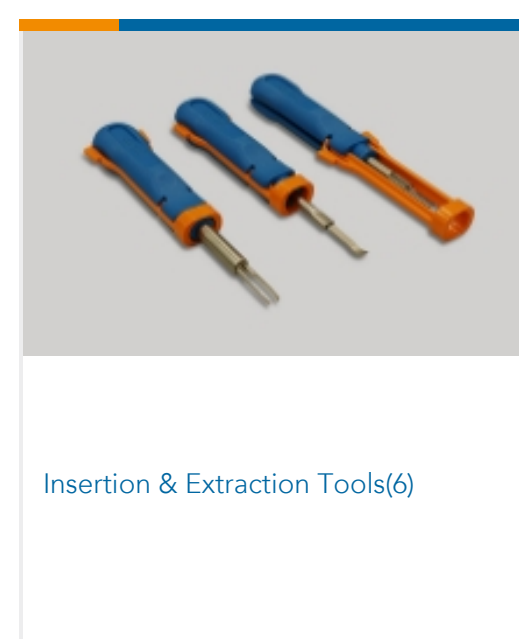
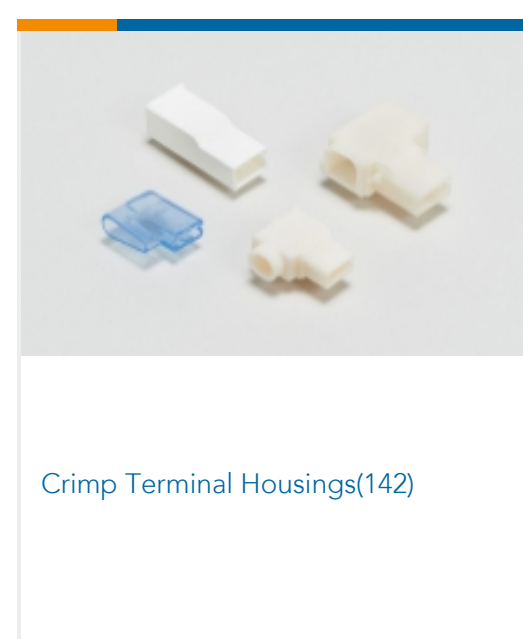
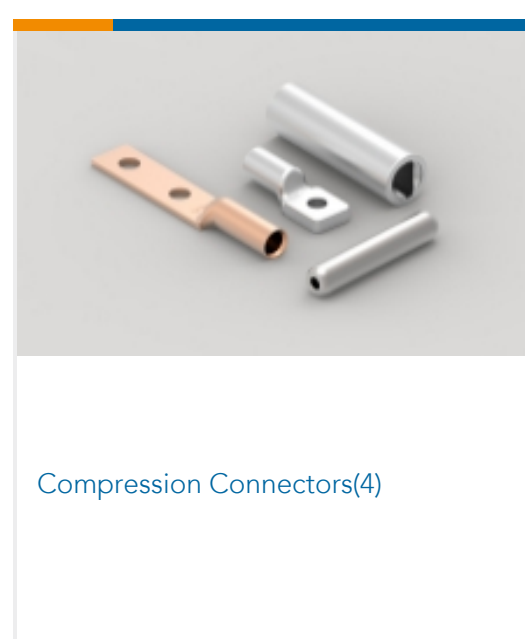
Product Compliance Disclaimer

This information is provided based on reasonable inquiry of our suppliers and represents our current actual knowledge based on the information they provided. This information is subject to change. The part numbers that TE has identified as EU RoHS compliant have a maximum concentration of 0.1% by weight in homogenous materials for lead, hexavalent chromium, mercury, PBB, PBDE, DBP, BBP, DEHP, DIBP, and 0.01% for cadmium, or qualify for an exemption to these limits as defined in the Annexes of Directive 2011/65/EU (RoHS2). Finished electrical and electronic equipment products will be CE marked as required by Directive 2011/65/EU. Components may not be CE marked. Additionally, the part numbers that TE has identified as EU ELV compliant have a maximum concentration of 0.1% by weight in homogenous materials for lead, hexavalent chromium, and mercury, and 0.01% for cadmium, or qualify for an exemption to these limits as defined in the Annexes of Directive 2000/53/EC (ELV). Regarding the REACH Regulation, the information TE provides on SVHC in articles for this part number is based on the latest European Chemicals Agency (ECHA) 'Guidance on requirements for substances in articles' posted at this URL: <https://echa.europa.eu/guidance-documents/guidance-on-reach>

Compatible Parts



Also in the Series | FASTON 250





PCB Terminals(135)

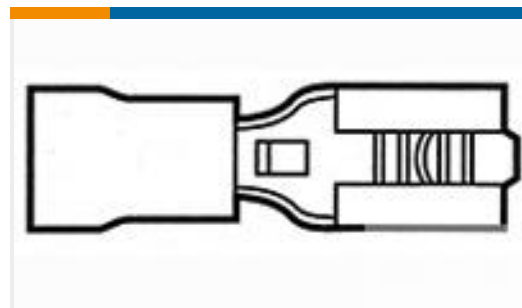
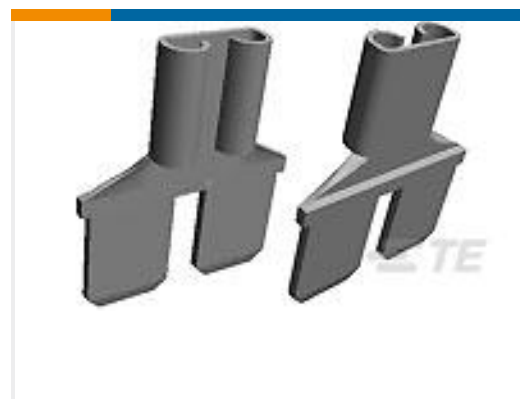


Quick Disconnects(445)



Splices(4)

Customers Also Bought

TE Part #8-1377174-5
SMP 9-0160481-1TE Part #1377173-4
SMP 0-0034160-0TE Part #4-1879352-6
RR02 5% 24R AMMOTE Part #EH3263-000
ZH150-5/2.5-0-SPTE Part #1-1377175-2
SMP 0-0735278-0TE Part #8-61765-1
FASTON,ADAPTER 250 HOUSING
REC&TAB TPBRTE Part #90872-1
PROC RMP TL W/DIE COMM .093 P/STE Part #2255144-1
MINI SAHT D2000-M

Documents

Product Drawings

[EPEZT * STECKHUELSE ISOLIERT 6,3 X 1,0 *](#)

English

CAD Files

[3D PDF](#)

3D

Customer View Model

[ENG_CVM_CVM_735278_L.2d_dxf.zip](#)

English

Customer View Model

[ENG_CVM_CVM_735278_L.3d_igs.zip](#)

English

Customer View Model

[ENG_CVM_CVM_735278_L.3d_stp.zip](#)

English

[3D PDF](#)



English

Customer View Model

[ENG_CVM_735278_F.3d_igs.zip](#)

English

Customer View Model

[ENG_CVM_735278_F.3d_stp.zip](#)

English

Customer View Model

[ENG_CVM_735278_F.2d_dxf.zip](#)

English

By downloading the CAD file I accept and agree to the [Terms and Conditions](#) of use.

Product Specifications

Product Specification

English

Product Environmental Compliance

[MD_735278_12262011229](#)

English

[MD_735278_12262011229](#)

English

Instruction Sheets

Instruction Sheet (non U.S.)

English

[APPLICATION OF AMP FULLY INSULATED FASTON* RECEPTACLES \(6,35mm\)](#)

English