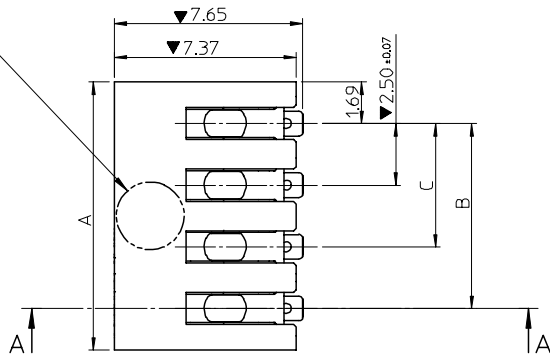
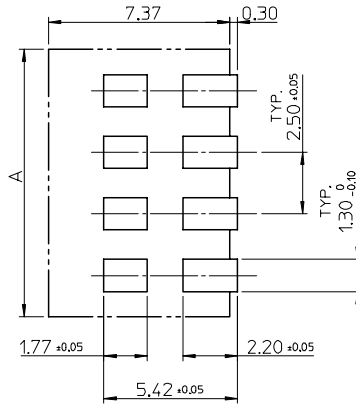


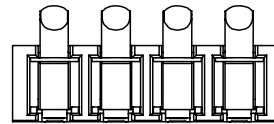
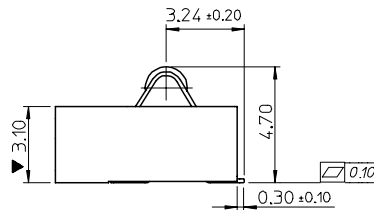
PICK-N-PLACE AREA
2.75 MIN. NOZZLE AREA



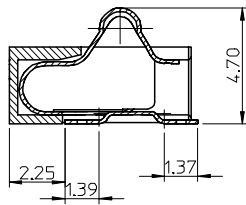
TAPE FEED DIRECTION →



RECOMMENDED PCB LAYOUT



Section A-A



NOTES:

1. MATERIAL :

HOUSING : LIQUID CRYSTAL POLYMER (LCP) 30% GLASS FILLED,
UL 94V-0 , COLOR : BLACK .

TERMINAL : BERYLLIUM COPPER (BeCu) , 190 HM (TM04),
THICKNESS : 0.15mm +/- 0.01mm, PER : 67999-0101

2. FINISH :

CONTACT AREA : GOLD (Au) , THICKNESS = 3 MICROINCH MINIMUM
/ 0.08 MICROMETER MINIMUM.

OVER PALLADIUM NICKEL (Pd/Ni, 80/20),
THICKNESS=25 MICROINCH MINIMUM.
/ 0.64 MICROMETER MINIMUM.

SOLDER TAIL : PURE TIN THICKNESS = 150
MICROINCH MINIMUM. / 3.8 MICROMETER MINIMUM.

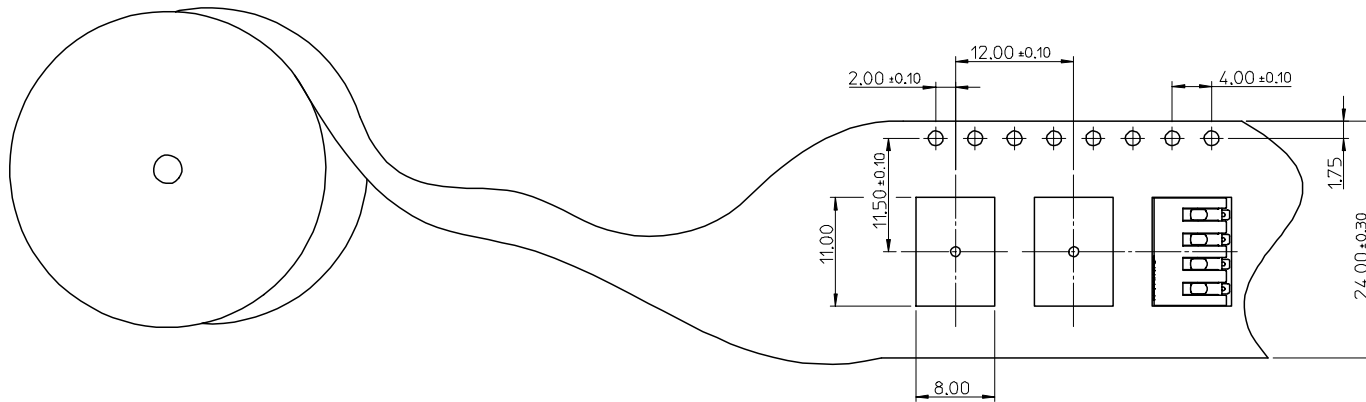
UNDER PLATE : SOFT NICKEL (Ni) OVERALL, THICKNESS= 50
MICROINCH MINIMUM./ 1.3 MICROMETER MINIMUM.

3. PACKAGING SPECIFICATION REFER TO: PK-67370-001

4. PRODUCT SPECIFICATION REFER TO: PS-67370-001

P/N	CKTS	A	B	C
67370-8001	4	10.87±0.15	7.50	5.00
67370-8003	3	8.37±0.15	/	5.00
67370-8002	2	5.87±0.15	/	/
67370-8004	4	10.87±0.15	7.50	5.00

NEW RELEASE EC NO: DRAWN: LISA 2004/11/10 CHKD: HARVEY APPR:	QUALITY SYMBOLS ▽ = 4 ∇ = 0	GENERAL TOLERANCES (UNLESS SPECIFIED)		SCALE 5:1	DESIGN UNITS METRIC	THIRD ANGLE PROJECTION	REVISE ON CAD ONLY	
				DIMENSION STYLE MM ONLY		TITLE 2.50 MM SMT BATTERY CONNECTOR (LEAD-FREE)		
		4 PLACES ± ---	± ---	DRAWN BY LISA	DATE 2004/11/10	MOLEX INCORPORATED		
		3 PLACES ± ---	± ---	CHECKED BY HARVEY	DATE 2004/11/11	MATERIAL NO. SEE TABLE	DOCUMENT NO. SD-67370-003	SHEET NO. 1 OF 2
A	REV	DRAFT WHERE APPLICABLE MUST REMAIN WITHIN DIMENSIONS		APPROVED BY	DATE	THIS DRAWING CONTAINS INFORMATION THAT IS PROPRIETARY TO MOLEX INCORPORATED AND SHOULD NOT BE USED WITHOUT WRITTEN PERMISSION		



TAPE FEED DIRECTION

NEW RELEASE	EC NO: 2004/11/10	DRAWN: LISA	CHKD: HARVEY	APPR:	REV	DESCRIPTION	QUALITY SYMBOLS	GENERAL TOLERANCES (UNLESS SPECIFIED)		SCALE 2:1	DESIGN UNITS METRIC	THIRD ANGLE PROJECTION	REVISE ON CAD ONLY
							= 0	mm	INCH	DIMENSION STYLE MM ONLY		TITLE	
							= 0	4 PLACES ± ---	± ---	DRAWN BY LISA	DATE 2004/11/10	2.50 MM SMT BATTERY CONNECTOR (LEAD-FREE)	
								3 PLACES ± ---	± ---	CHECKED BY HARVEY	DATE 2004/11/11		
	2 PLACES ± 0.25	± ---	APPROVED BY		DATE	MATERIAL NO.	DOCUMENT NO.	SHEET NO.					
	1 PLACE ± 0.25	± ---	DRAFT WHERE APPLICABLE			SEE SHEET 1	SD-67370-003	2 OF 2					
			MUST REMAIN WITHIN DIMENSIONS			THIS DRAWING CONTAINS INFORMATION THAT IS PROPRIETARY TO MOLEX INCORPORATED AND SHOULD NOT BE USED WITHOUT WRITTEN PERMISSION							



MOLEX INCORPORATED

A

A3