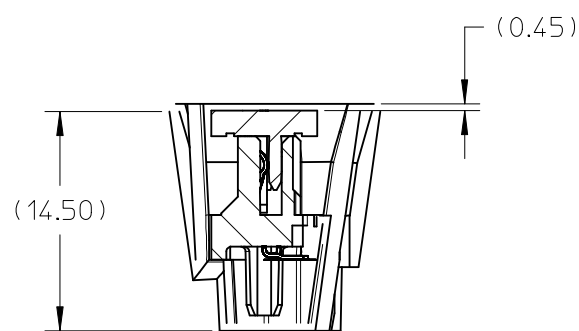
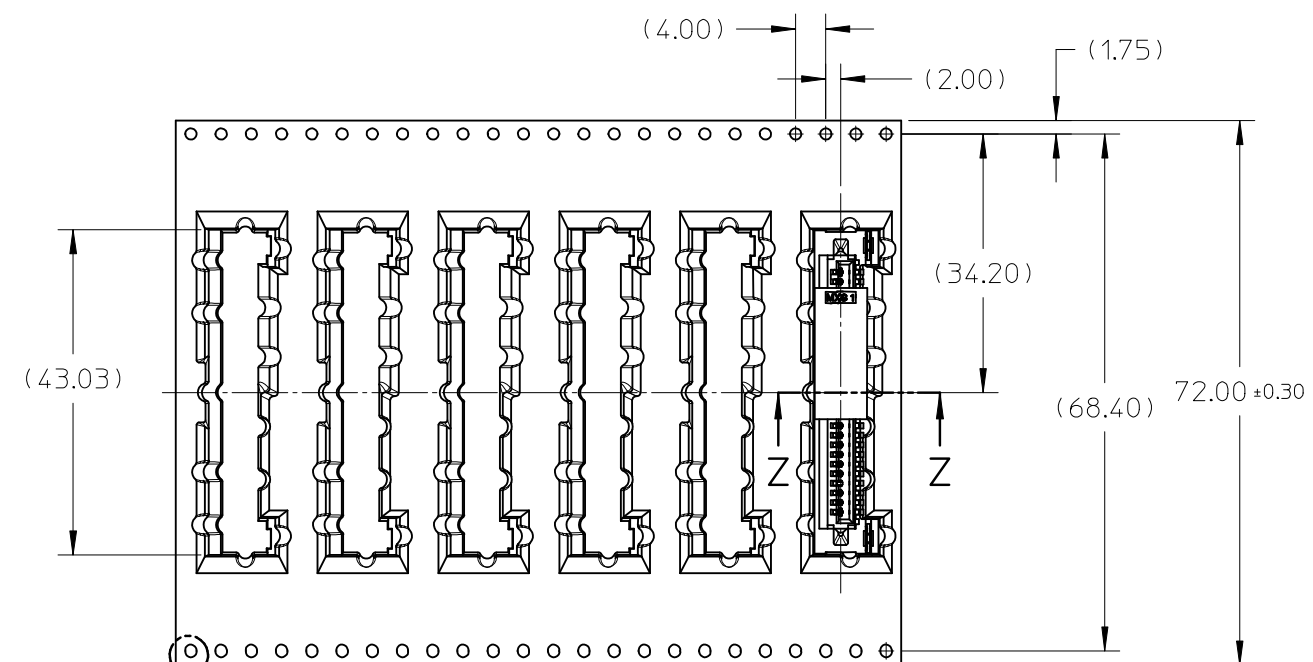


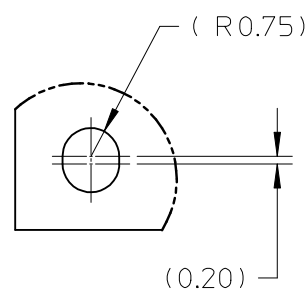
EMBOSSED TAPE PART NO	REEL PART NO	TOP TAPE PART NO	ASSEMBLY PART NO	QUANTITY/ REEL	REELS/ CARTON
78888-2117	89990-5772	89990-5607	78715-0004	250	4 REELS/ CARTON
			78715-0005		
			78715-0007		
			78715-0011		
			78715-0013		
			78715-0026		
			78715-0025		



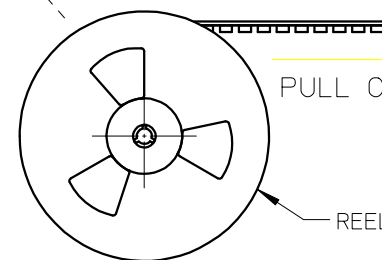
SECTION Z-Z



DETAIL1

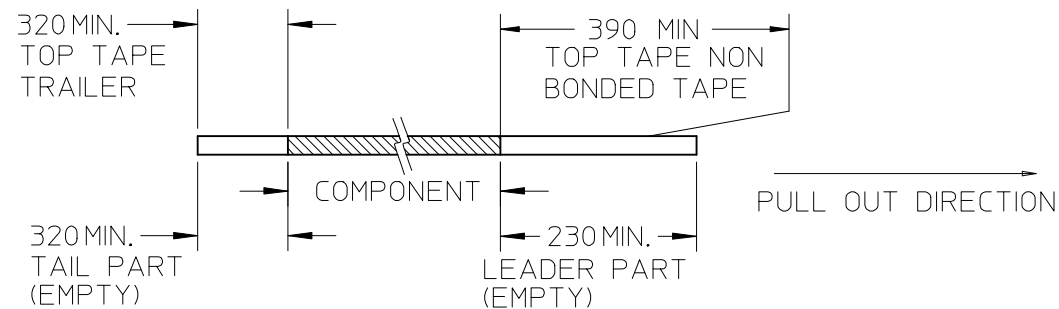


DETAIL1

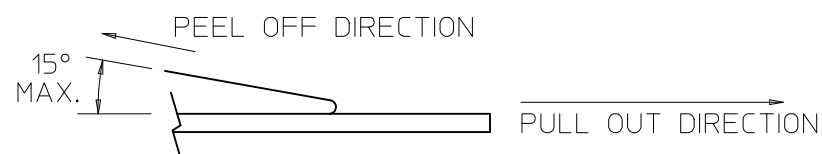


NOTES:

1. LEADER AND TRAILER TAPE



2. PEELING OFF FORCE OF THE TOP TAPE: 20 - 80gf.  
(PEELING DIRECTION AS SHOWN IN FOLLOWING FIGURE)



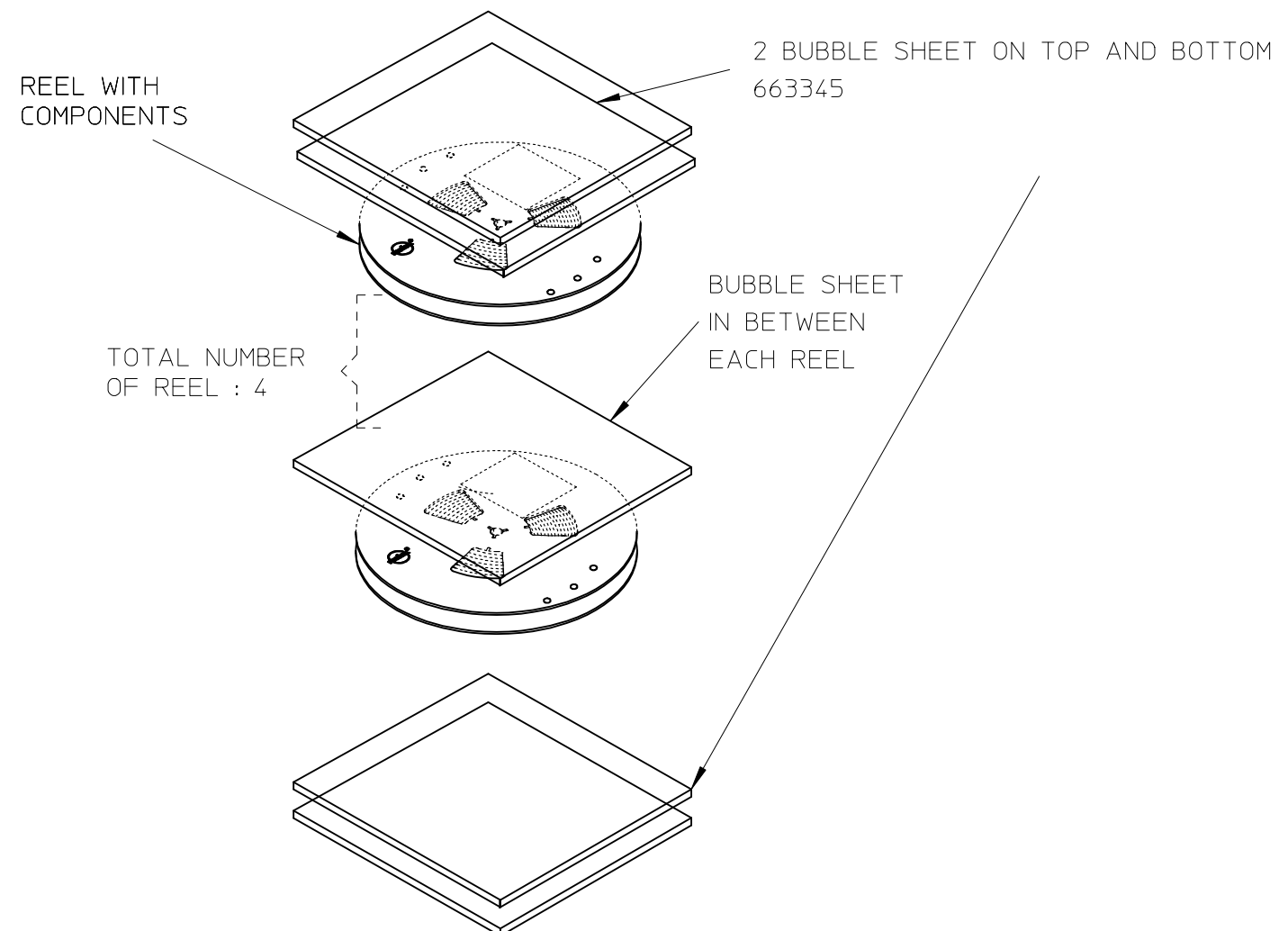
3. TAPE AND REEL SPECIFICATION IS AS PER EIA-481.
4. TAPE AND REEL QUANTITY : 250 PCS/ REEL.
5. THE TAPE IS TREATED FOR ANTI-STATIC.
6. PARTS TO BE PACKED AND ORIENTATED AS PER DETAIL SHOWN.
7. CLOSE CARTON WITH TAPE.
8. ORIENTATION OF THE CONNECTOR IN ALL OTHER PRODUCTS ARE SAME AS THE SHOWN.

ADD P/N 78715-0025 EC NO: S2015-0542 DRWN:HCGOH 2014/12/04 CH'KD:JESSIECHUA 2014/12/04 APPR:SHONG 2015/01/05	QUALITY SYMBOLS $\nabla_A = 0$ $\nabla_C = 0$ $\nabla_P = 0$	GENERAL TOLERANCES (UNLESS SPECIFIED)		DIMENSION STYLE	SCALE	DESIGN UNITS	THIRD ANGLE PROJECTION	
				MM ONLY	NTS	METRIC		
		4 PLACES	± ---	± ---	DRAWN BY	DATE		TITLE
		3 PLACES	± ---	± ---	CGOH	2011/10/11		PACKAGING SPECIFICATION FOR 78715 (TAPE & REEL) SAS RECEPTACLES
2 PLACES	± ---	± ---	CHECKED BY	DATE				
1 PLACE	± ---	± ---	SCHEONG	2011/10/20				
0 PLACE	±	±	APPROVED BY	DATE				
		ANGULAR ± --- °	BOKOK	2011/10/20				
		DRAFT WHERE APPLICABLE MUST REMAIN WITHIN DIMENSIONS	MATERIAL NO.	SEE TABLE	DOCUMENT NO.			
			SIZE	A3	THIS DRAWING CONTAINS INFORMATION THAT IS PROPRIETARY TO MOLEX INCORPORATED AND SHOULD NOT BE USED WITHOUT WRITTEN PERMISSION			

**molex**

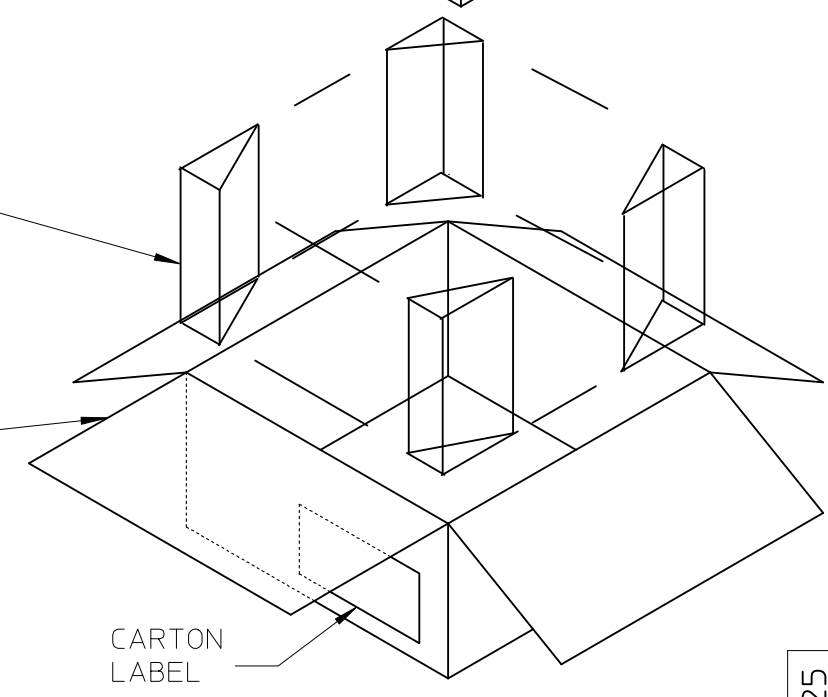
PK-78715-003

SHEET NO. 1 OF 2



CORNER GUARD:  
78888-1250

CARTON  
899901011



Stack Reel

ADD P/N 78715-0025  
EC NO: S2015-0542  
DRWN:HCGOH 2014/12/04  
CHKD:JESSIECHUA 2014/12/04  
APPR:SHONG 2015/01/05

REV	DESCRIPTION
A2	

QUALITY SYMBOLS	GENERAL TOLERANCES (UNLESS SPECIFIED)	
	mm	INCH
$F_A=0$	4 PLACES $\pm$ ---	$\pm$ ---
$F_E=0$	3 PLACES $\pm$ ---	$\pm$ ---
$F_P=0$	2 PLACES $\pm$ ---	$\pm$ ---
	1 PLACE $\pm$ ---	$\pm$ ---
	0 PLACE $\pm$	$\pm$
	ANGULAR $\pm$ ---°	
	DRAFT WHERE APPLICABLE MUST REMAIN WITHIN DIMENSIONS	

DIMENSION STYLE MM ONLY	
DRAWN BY CGOH	DATE 2011/10/11
CHECKED BY SCHEONG	DATE 2011/10/20
APPROVED BY BOKOK	DATE 2011/10/20
MATERIAL NO. SEE TABLE	
SIZE A3	THIS DRAWING CONTAINS INFORMATION THAT IS PROPRIETARY TO MOLEX INCORPORATED AND SHOULD NOT BE USED WITHOUT WRITTEN PERMISSION

SCALE NTS	DESIGN UNITS METRIC	THIRD ANGLE PROJECTION
TITLE PACKAGING SPECIFICATION FOR 78715 (TAPE & REEL) SAS RECEPTACLES	<b>molex</b>	
DOCUMENT NO. PK-78715-003	SHEET NO. 2 OF 2	