

A

B

C

D

A

B

C

D

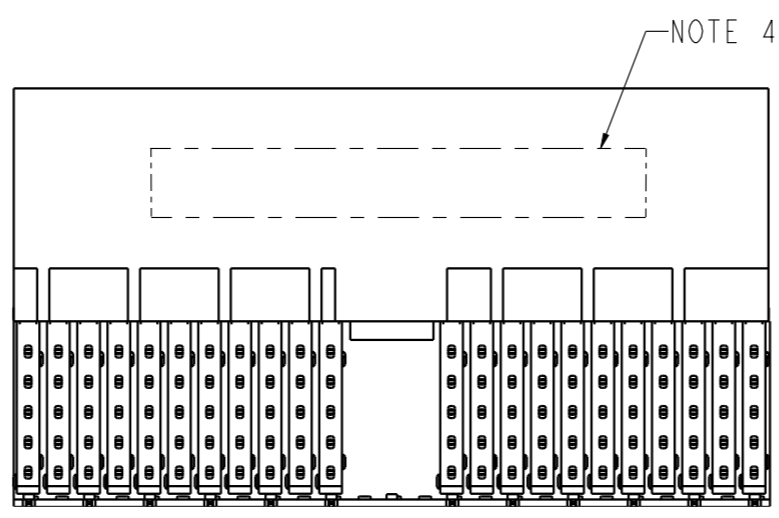
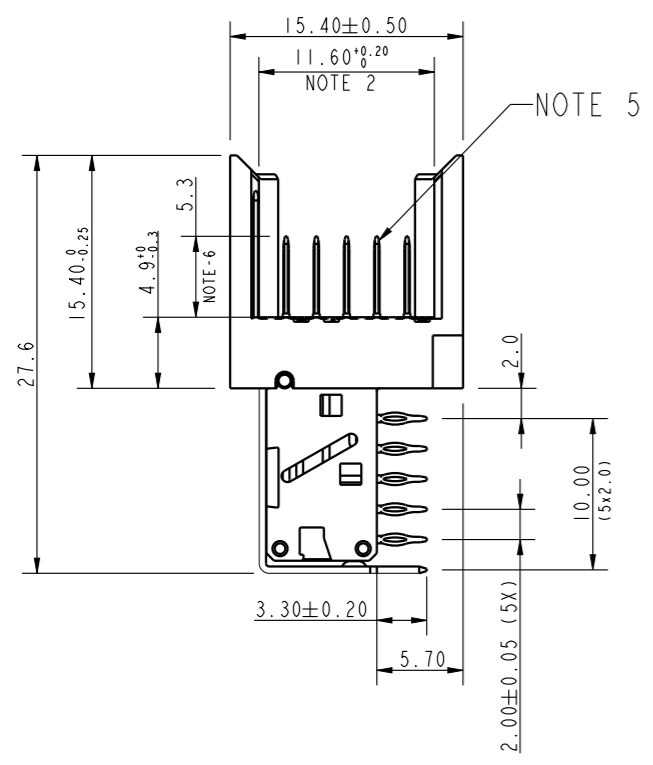
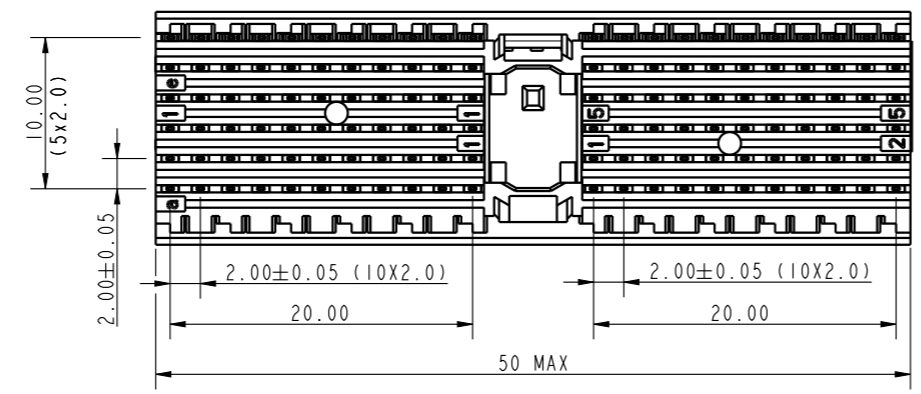
PERFORMANCE CHARACTERISTICS :

CURRENT RATING : 1.5A AT 20°C (FULLY LOADED)  
 1A AT 70°C (FULLY LOADED)  
 RATED VOLTAGE : 500V AC (CONT / CONT)  
 OPERATING TEMPERATURE : -55°C TO 125°C  
 CONTACT RESISTANCE : 25mΩ MAX.  
 INSERTION FORCE : 0.75 N MAX / CONT  
 EXTRACTION FORCE : 0.15 N MIN / CONT  
 INSULATION RESISTANCE : 10<sup>4</sup> MΩ MIN.

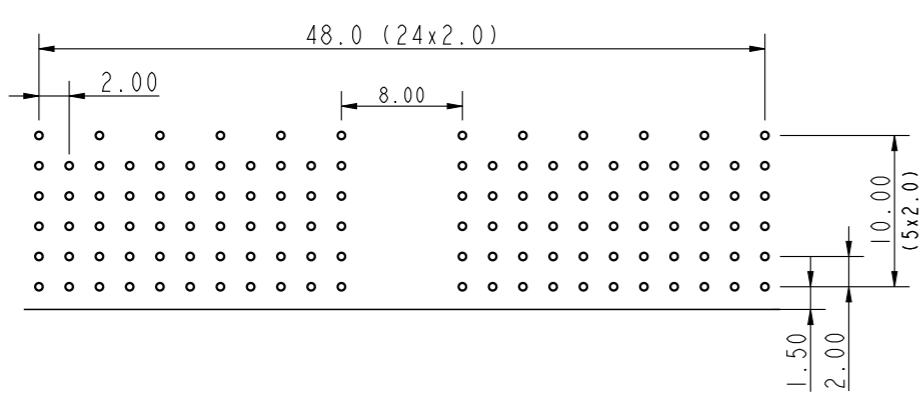
NOTES :

- UL APPROVED WITH USR AND CNR.
- MEASURED AT THE BOTTOM.
- MATERIAL CONTACT : PHOSPHORBRONZE.  
HOUSING : LCP 30% GLASS-FILLED.
- CONNECTOR PRINTED WITH P/N AND DATE CODES.
- FOR ACTUAL CONTACT LOADINGS, SEE LOADING PATTERN MATING SIDE.)
- 4 = LEVEL 1 (5.30)  
5 = LEVEL 2 (6.80)  
6 = LEVEL 3 (8.30)

- LEAD FREE INDICATOR : LF = LEAD FREE
- 'HM2J07PE5118' PERFORMANCE LEVEL INDICATOR (Ref DWG No BS,C ,201844,003)
- FOR RECOMMENDED PTH DIMENSIONS REFER DRAWING : BS,A ,201572,001
- THIS PRODUCT (LF) MEETS EUROPEAN UNION DIRECTIVES AND OTHER COUNTRY REGULATIONS AS DESCRIBED IN GS-47-0004



PCB HOLE LAY-OUT



LOADING PATTERN : MATING SIDE

F	6	6	6	6	6	6	6	6	6	6	X	X	X	6	6	6	6	6	6	6	6	6	6	6	6
E	4	4	4	4	4	4	4	4	4	4	X	X	X	4	4	4	4	4	4	4	4	4	4	4	4
D	4	4	4	4	4	4	4	4	4	4	X	X	X	4	4	4	4	4	4	4	4	4	4	4	4
C	4	4	4	4	4	4	4	4	4	4	X	X	X	4	4	4	4	4	4	4	4	4	4	4	4
B	4	4	4	4	4	4	4	4	4	4	X	X	X	4	4	4	4	4	4	4	4	4	4	4	4
A	4	4	4	4	4	4	4	4	4	4	X	X	X	4	4	4	4	4	4	4	4	4	4	4	4
Z	X	X	X	X	X	X	X	X	X	X	X	X	X	X	X	X	X	X	X	X	X	X	X	X	X
	1	2	3	4	5	6	7	8	9	10	11	12	13	14	15	16	17	18	19	20	21	22	23	24	25

spec ref	-	dr	P-Mathew Nebu	2011/05/24	projection	mm	size	A3	scale	1/1		
tolerance std	ISO 406 ISO 1101	eng	Alex Babu	2020/07/27		mm	ecn no	ELX-I-37774-1	rel level	Released		
TOLERANCES UNLESS OTHERWISE SPECIFIED		chr	-	appr							Kuriakose, San	2020/07/27
surface	linear	0.X	±0.2	0.XX	±0.1	0.XXX	±0.05	ISO 1302	angular	0°	±1°	
		<b>Amphenol FCI</b>		MPACS RA HDR		Type A, Shielded		cat. no.	HM2J07PE5118----	Product - Customer Drw	sheet 1 of 1	
						dwg no		BSC202767006		rev		J

Amphenol FCI

© 2016 AFCI