

CUSTOMER TERMINAL	RoHS	LEAD(Pb)-FREE
Sn96%, Ag4%	Yes	Yes



**ELECTRICAL SPECIFICATIONS @ 25°C unless otherwise noted:**

PARAMETER	TEST CONDITIONS	VALUE
D.C. RESISTANCE	1-4 tie(2+3), @20°C	1.20 ohms max.
D.C. RESISTANCE	8-5 tie(7+6), @20°C	1.60 ohms max.
INDUCTANCE <sup>1</sup>	1-4 tie(2+3), 100kHz, 100mVAC, Ls	3.0mH min.
DIELECTRIC	1-8 tie(2+3, 7+6) 1875VAC, 1 second	1500VAC, 1 minute
TURNS RATIO	(8-5):(1-4), tie(7+6, 2+3)	1.25:1, ±2%

<sup>1</sup> Designed to meet the specification thru the operating temperature range.

**GENERAL SPECIFICATIONS:**

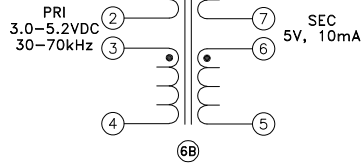
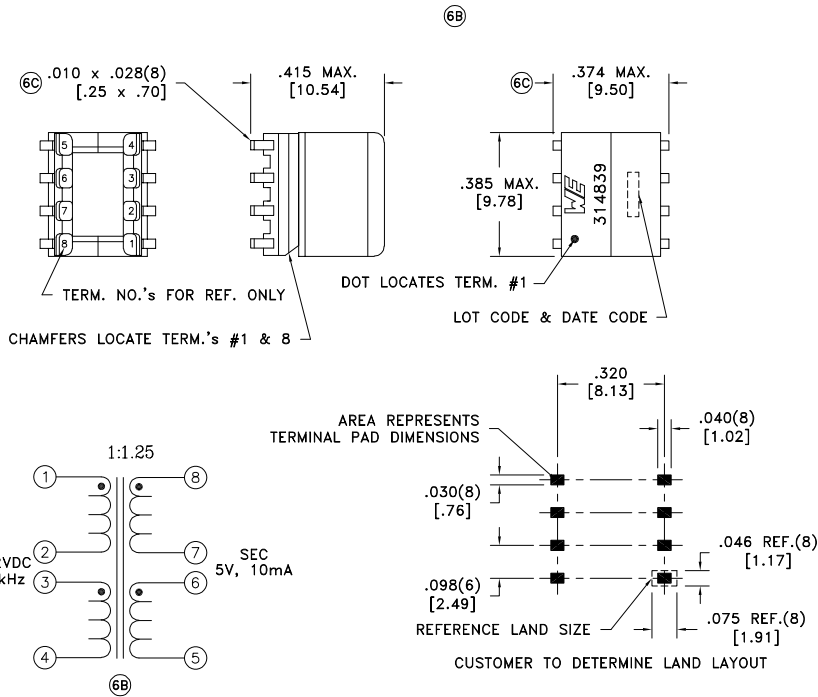
OPERATING TEMPERATURE RANGE: -40°C to +100°C, including temp. rise.

VOLTAGE-TIME: 100VuS, Based on Bsat at 100°C and number of turns across terminals 1-4.

CURRENT RATING: 150mArms

Designed to comply with the following requirements as defined by IEC60950-1, EN60950-1, UL60950-1/CSA60950-1 and AS/NZS60950.1:

- Functional insulation for a primary circuit at a working voltage of 360VDC.



Wire insulation & RoHS status not affected by wire color.  
Wire insulation color may vary depending on availability.

REV.	DATE	Packaging Specifications	CONVENTION PLACEMENT
6D	1/23	Method: Tape & Reel	
6C	9/22	PKG-0410	
6B	11/15	www.we-online.com/midcom	
6A	8/14	SEE REVISION SHEET FOR REVISION LEVEL	

Tolerances unless otherwise specified:  
Angles:  $\pm 1^\circ$  Decimals:  $\pm .005$  [.13]  
Fractions:  $\pm 1/64$  Footprint:  $\pm .005$  [.13]

This drawing is dual dimensioned. Dimensions in brackets are in millimeters.

DRAWING TITLE  
**TRANSFORMER**

eiSos p/n: 750314839

PART NO.  
**750314839**

SPECIFICATION SHEET 1 OF 1

