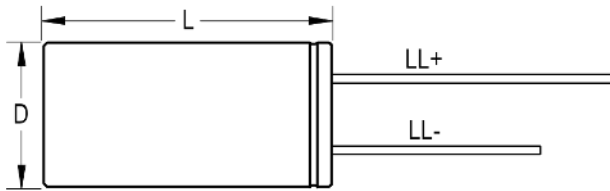
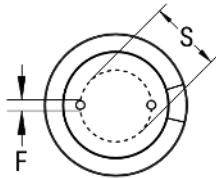


SIDE VIEW



TERMINAL END VIEW



Click [here](#) for the 3D model.

### Dimensions

D	5mm +/-0.5mm
L	11mm +1.5mm
S	2mm +/-0.5mm
LL Negative	15mm MIN
LL Positive	20mm MIN
F	0.5mm NOM

### Packaging Specifications

Packaging	Bulk, Bag
Packaging Quantity	10000

### General Information

Series	ESH
Dielectric	Aluminum Electrolytic
Description	High CV Single Ended Aluminum Electrolytic
Features	High CV
RoHS	Yes
Lead	Wire Leads
AEC-Q200	No

### Specifications

Capacitance	10 uF
Capacitance Tolerance	20%
Voltage DC	63 VDC, 79 VDC (Surge)
Temperature Range	-40/+105°C
Rated Temperature	105°C
Life	2000 Hrs
Dissipation Factor	10% 120Hz 25C
Ripple Current	55 mAmps (120Hz 105C)
Leakage Current	6.3 uA (2min 20°C)
Impedance Ratio at -25C	2
Impedance Ratio at -40C	3