

MODEL NUMBER  
TRM-2055-FC-SMA-02

NOTES:

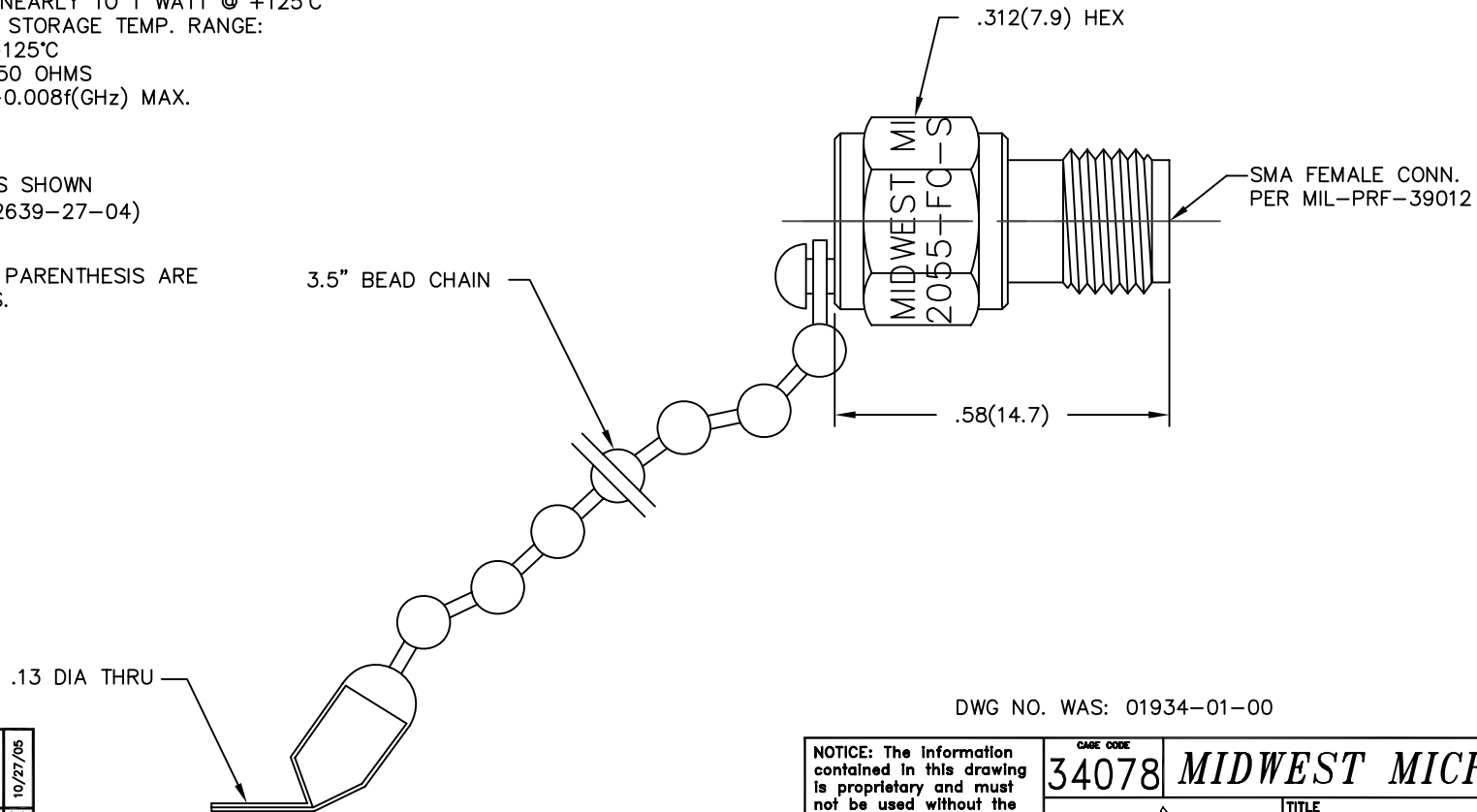
1.0 ELECTRICAL SPECIFICATIONS:

- 1.1 FREQUENCY RANGE: DC to 18.0 GHz
- 1.2 MAXIMUM INPUT POWER: 2 WATTS AVG. @ +25°C  
DERATED LINEARLY TO 1 WATT @ +125°C
- 1.3 OPERATING & STORAGE TEMP. RANGE:  
-65°C to +125°C
- 1.4 IMPEDANCE: 50 OHMS
- 1.5 VSWR: 1.05 +0.008f(GHz) MAX.

2.0 MARKING:

MARK UNIT AS SHOWN  
(REF.: INK-02639-27-04)

3.0 DIMENSIONS IN PARENTHESIS ARE  
IN MILLIMETERS.



DWG NO. WAS: 01934-01-00

REV.	DESCRIPTION	DATE
-	RELEASED	12/11/89
A	ECR 4109	1/7/86
B	ECR 6545	6/28/89
C	ECR 6939	12/23/88
C1	REDRAW ON CAD	9/4/91
D	ECN 11825	5/18/92
E	ECN 12132	10/15/92
F	ECN 13122	11/19/93
F1	ADDED TITLEBLOCK	10/27/05

NOTICE: The information contained in this drawing is proprietary and must not be used without the permission of Emerson Network Power.

UNLESS OTHERWISE NOTED DIMENSIONS ARE IN INCHES AND TOLERANCES ARE:  
3 PLACE DECIMALS ±.005  
2 PLACE DECIMALS ±.02  
FRACTIONS ±1/64  
PARALLELITY: T.I.R.  
FLATNESS: T.I.R.  
CONCENTRICITY: T.I.R.  
ANGLES AND PERPENDICULARITY: ±1'

CAGE CODE <b>34078</b>		<b>MIDWEST MICROWAVE</b>	
 <b>EMERSON</b> Network Power Connectivity Solutions		TITLE TERMINATION OUTLINE DRAWING	
		DRAWN/DATE A.BEATTY 9/4/91	ENG./DATE G.KOZAK 9/5/91
CHECKED/DATE C.RICKARD 9/5/91	APPROVED/DATE	DRAWING NUMBER TRM-2055-FC-SMA-02-01	REV. F1
SCALE: 5=1		SHEET 1 of 1	