

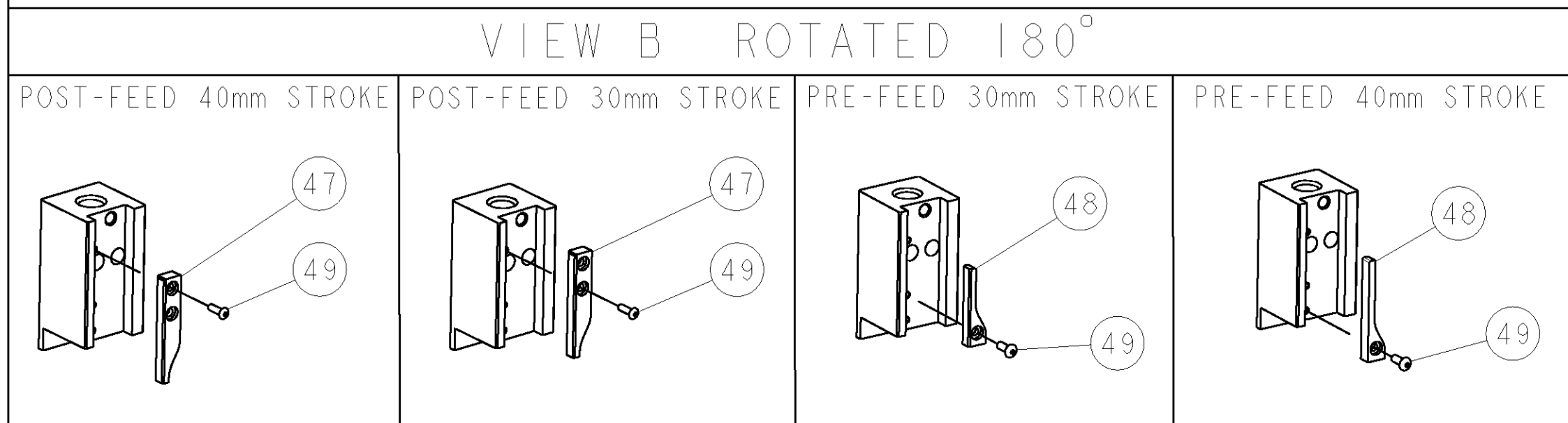
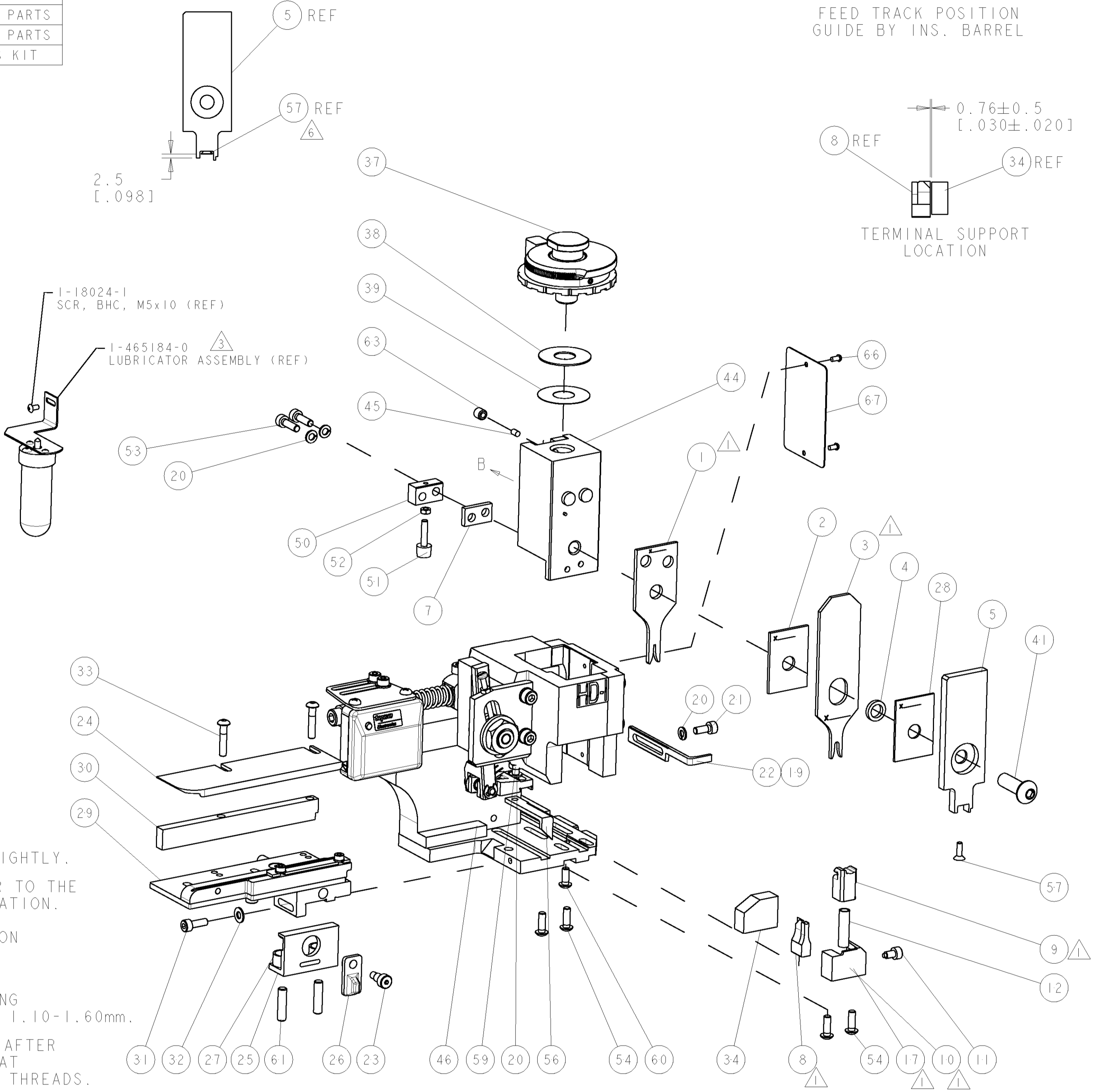
PART NUMBER	REV	TERMINATOR	FEED TYPE	DESCRIPTION
1528907-1	A	LEADMAKER	MECH POST FEED	CUTS CARRIER
1528907-2	A	BENCH	MECH PRE FEED	CUTS CARRIER
1528907-6	A	LEADMAKER	MECH POST FEED	CONTINUOUS CARRIER
7-1528907-1	A	LEADMAKER	MECH POST FEED	-1 AND SPARE PARTS
7-1528907-2	A	BENCH	MECH PRE FEED	-2 AND SPARE PARTS
7-1528907-6	A	LEADMAKER	MECH POST FEED	-6 AND SPARE PARTS
7-1528907-7	A	-	-	SPARE PARTS KIT

CRIMP	SIZE	TYPE	RANGE
WIRE	1.17 [0.046 IN]	F	0.14-0.35mm ²
INSUL	2.90 [1.114 IN]	O	1.10-1.50 [1.043-.059 IN]

TE TERM PN	MANUF TERM PN	TE SEAL PN	MANUF SEAL PN
1949696-1	32124734100	1949520-1	10800507250
1949696-2	32140734100	-	-

WIRE SIZE	CRIMP HEIGHT	REF SETTING
0.35mm ²	0.84 ± 0.03 [0.033 ± 0.001 IN]	C5
0.14mm ²	0.73 ± 0.03 [0.029 ± 0.001 IN]	D3

- 1 RECOMMENDED SPARE PARTS.
- 2. GREASE RAM, CAM, CAM FOLLOWER AND FEED ROD LIGHTLY.
- 3 CERTAIN TERMINALS REQUIRE LUBRICATION. REFER TO THE APPLICATOR INSTRUCTION SHEET FOR MORE INFORMATION.
- 4. LUBRICATE DAILY PER THE APPLICATOR INSTRUCTION SHEET SUPPLIED WITH THE APPLICATOR.
- 5 THIS APPLICATOR APPLIES TERMINAL WITH A SEAL. WIRE INSULATION DIA IS DEPENDENT ON SEAL BEING APPLIED. SEAL PN 1949520-1 INS. DIA RANGE IS 1.10-1.60mm.
- 6 APPLY TORQ-SEAL IN ALLEN SOCKET TO FILL HOLE AFTER FLAT HD HAS BEEN ADJUSTED TO CORRECT HEIGHT AT QUALIFICATION. APPLY #1-23419-5 LOC-TITE TO THREADS.
- 7 CRIMP DATA SUPPLIED BY THE TERMINAL MANUFACTURER.
- 8 WIRE AND INSULATION RANGES ARE THAT OF THE TERMINAL.



ITEM NO	DESCRIPTION
84	
83	
82	
81	
80	
79	
78	
77	
76	
75	
74	
-77 -76 -72 -71 -6 -2 -1	PART NO DESCRIPTION

SET UP GAGE 458637-3		LOC	DIST	REVISIONS			
A	66			REV	DATE	BY	APPV
				A	ECO-08-015842	26 JUNE 2008	MB MC

ITEM NO	DESCRIPTION	DATE	BY	APPV
73				
72				
71	DOCUMENTATION PACKAGE			
70				
69				
68				
67	PLATE, IDENTIFICATION			
66	SCREW, DRIVE			
65				
64				
63	SCR, SET, CUP POINT M6 X 6.0			
62				
61	SCR, SET, FLT POINT M5 X 20.0			
60	SCR, BTN SKT HD CAP (M4 X 10.0)			
59	SCR, HEX HD CAP M4 X 8.0			
58				
57	SCR, FLT SKT HD CAP M3 X 10.0			
56	PAWL, FEED			
55				
54	SCR, BTN SKT HD CAP (M4 X 12.0)			
53	SCR, SKT HD CAP M4 X 14.0			
52	NUT, HEX, REG M3			
51	BUMPER, HOLD DOWN			
50	SPACER, TONKER			
49	SCR, BTN SKT HD CAP (M3 X 10.0)			
48	CAM, UNIVERSAL PRE FEED			
47	CAM, UNIVERSAL POST-FEED			
46	APPLICATOR SUBASSEMBLY, HDI			
45	PLUG, NYLON			
44	RAM			
43				
42				
41	SCR, BTN SKT HD CAP (M8 X 25.0)			
40				
39	SHIM SUB-ASSY			
38	SHIM			
37	FINE ADJUST HEAD ASSEMBLY			
36				
35				
34	SUPPORT, TERMINAL			
33	SCR, BTN SKT HD CAP (M4 X 20.0)			
32	WASHER, FLAT, REG M4			
31	SCR, SKT HD CAP M4 X 12.0			
30	SPACER, STRIP GUIDE			
29	STRIP GUIDE ASSEMBLY			
28	SPACER, CRIMPER			
27	SPRING, COMPRESSION			
26	LEVER, DRAG RELEASE			
25	DRAG, TERMINAL			
24	PLATE, STRIP GUIDE			
23	SCR, SKT HD SHLDR 5.0 DIA X 6.0			
22	STRIPPER			
21	SCR, SKT HD CAP M4 X 10.0			
20	WASHER, SPRG LOCK, REG M4			
19	STRIPPER			
18				
17	SHEAR HOLDER, FRONT			
16				
15				
14				
13				
12	SPRING, COMPRESSION			
11	STOP, SHEAR			
10	SHEAR HOLDER, FRONT, CUT			
9	FLOATING SHEAR, FRONT			
8	ANVIL, COMBINATION			
7	SPACER			
6				
5	DEPRESSOR, SHEAR			
4	BLOCK, CRIMPER SPACER			
3	CRIMPER, INSUL O PREMIUM			
2	SPACER, CRIMPER			
1	CRIMPER, WIRE			

DIMENSIONS:	TOLERANCES UNLESS OTHERWISE SPECIFIED:
mm [IN]	0 PLC ±
	1 PLC ±
	2 PLC ±
	3 PLC ±
	4 PLC ±
	ANGLES ±

MATERIAL	FINISH	WEIGHT	SCALE	SHEET	OF	REV
			3:5	1	1	A

DATE	BY	APPV	DESCRIPTION
03 JUN 2008	J. LOETHOUSE	M. CLIFFORD	FINE ADJUST SIDE FEED HDI APPLICATOR

SIZE	CAGE CODE	DRAWING NO	RESTRICTED TO
A	00779	C-1528907	