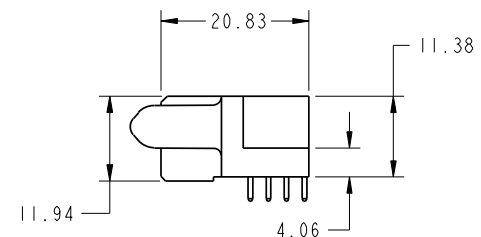
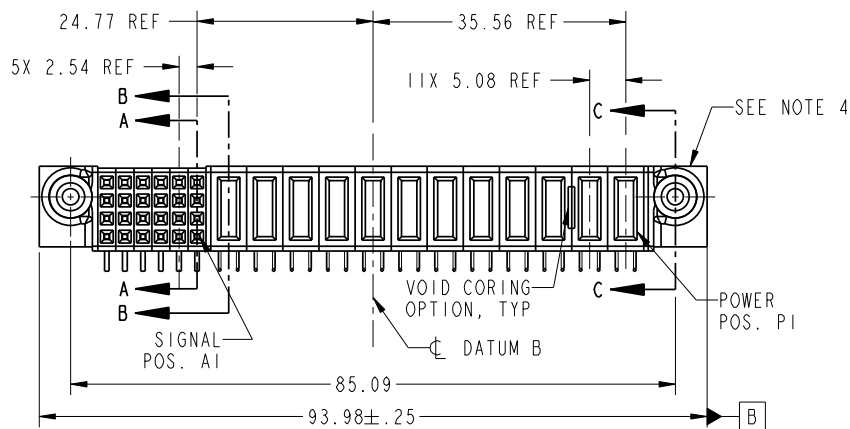


Tous droits strictement reserves. Reproduction ou communication a des tiers interdite sous quelque forme que ce soit sans autorisation ecrite du propriétaire. Propriete de c FCI. Droits de reproduction FCI.



All rights strictly reserved. Reproduction or issue to third parties in any form whatever is not permitted without written authority from the proprietor. Property of FCI. Copyright FCI.

PRODUCT NO.	ROWS	SIGNAL				POWER												E1				
		E2	6	5	4	3	2	1	P12	P11	P10	P9	P8	P7	P6	P5	P4		P3	P2	P1	
51915-132-- NOTE 3	D C B A		H	H	H	H	H	H	H	PA	PA	PA	PA	PA	PA	PA	PA	PA	PA	PA	PA	



CODE	DIM "M" MATING LENGTH	CONTACT TYPE
PA	[1.07]	POWER
H	[N/A]	SIGNAL
G	[N/A]	SIGNAL
F	[N/A]	SIGNAL
E	[N/A]	SIGNAL

mat'l code				SEE NOTE 2		tolerances unless otherwise specified		CUSTOMER	
ltr	ecn no.	dr	date	linear	0.X ± 0.3	COPY		FCI	
A	DG07-0337	JUL1A	28/06/06		0.XX ± 0.13	projection		www.fciconnect.com	
				angles	0.XXX ± 0.051			title	
				dr	0° ± 2°	MM		12P+24S	
				enr	JULIA WANG 28/06/06	scale		R/A STB RECEPT	
				chr	JEROME CHEN 28/06/06	1:1		product family	
				appd	GARY HSIEH 28/06/06			PwrBlade	
					JOSEPH HSIA 28/06/06			code	
sheet index	revision	A	A	A	A			size	
	sheet	1	2	3	4			dwg no	
								51915-132	
								sheet	
								1 of 4	



www.fciconnect.com

title 12P+24S R/A STB RECEPT

product family PwrBlade code 213  
size A dwg no 51915-132 sheet 1 of 4

cage code 22526

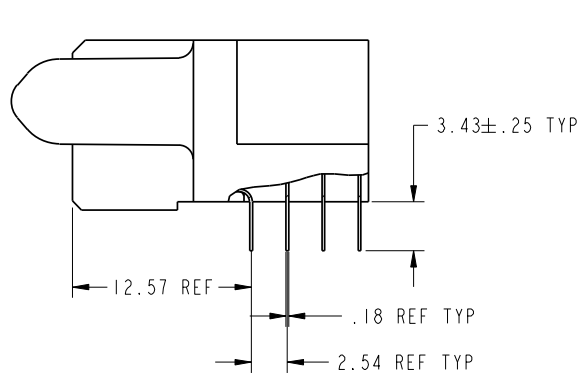
Pro/E

Tous droits strictement reserves. Reproduction ou communication a des tiers interdite sous quelque forme que ce soit sans autorisation ecrite du proprietaire. Propriete de c FCI. Droits de reproduction FCI.

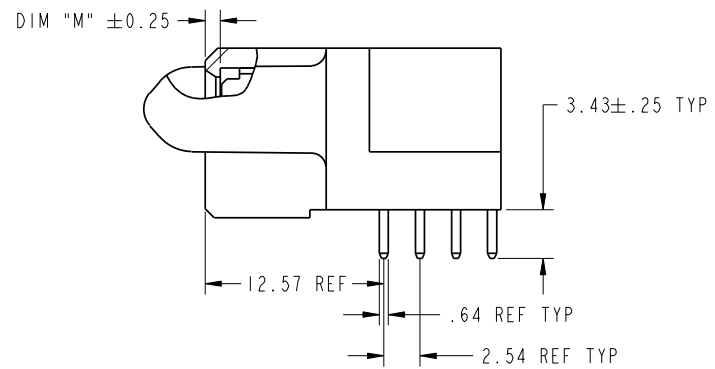


All rights strictly reserved. Reproduction or issue to third parties in any form whatever is not permitted without written authority from the proprietor. Property of FCI. Copyright FCI.

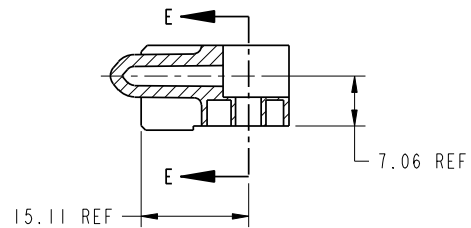
PRODUCT NUMBER  
51915-132\_\_  
NOTE 3



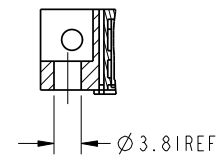
BROKEN-OUT SECTION A-A  
SCALE 2:1



BROKEN-OUT SECTION B-B  
SCALE 2:1



SECTION C-C



PARTIAL SECTION E-E

mat'l code				SEE NOTE 2		tolerances unless otherwise specified		CUSTOMER		FCI	
lfr	ecn no.	dr	date	linear	0.X ± 0.3	COPY		www.fciconnect.com		title	
A				linear	0.XX ± 0.13	projection		12P+24S		R/A STB RECEIPT	
				angles	0.XXX ± 0.051	MM		product family		PwrBlade	
				dr	JULIA WANG 28/06/06	scale		size		code	
				enr	JEROME CHEN 28/06/06	1:1		dwg no		213	
				chr	GARY HSIEH 28/06/06			A		sheet	
				appd	JOSEPH HSIA 28/06/06			51915-132		2 of 4	
sheet index	revision sheet										

cage code 22526

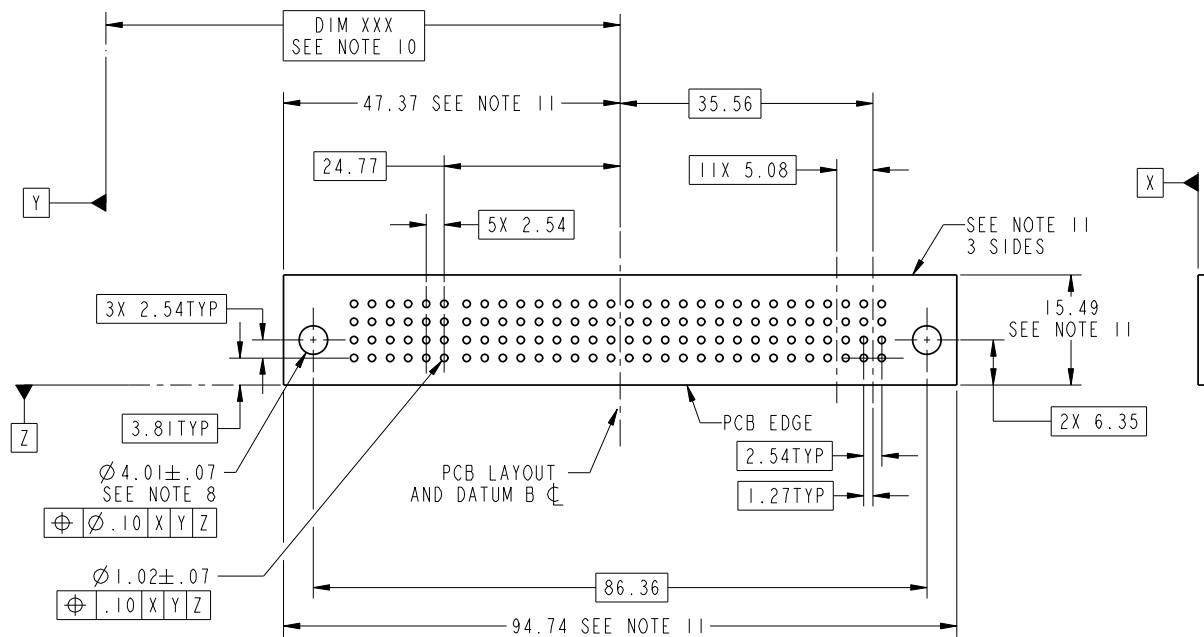
Pro/E

Tous droits strictement reserves. Reproduction ou communication a des tiers interdite sous quelque forme que ce soit sans autorisation écrite du propriétaire. Propriete de c FCI. Droits de reproduction FCI.



All rights strictly reserved. Reproduction or issue to third parties in any form whatever is not permitted without written authority from the proprietor. Property of FCI. Copyright FCI.

PRODUCT NUMBER  
51915-132--  
NOTE 3



mat'l code				SEE NOTE		tolerances unless otherwise specified		CUSTOMER		FCI		www.fciconnect.com		
lfr	ecn no.	dr	date	linear	0.X ±0.3	projection		COPY		title				
A					0.XX ±0.13	MM		A		I2P+24S R/A STB RECEIPT				
				angles	0.XXX ±0.051	scale		1:1		product family		code		
				dr	JULIA WANG 28/06/06					PwrBlade		213		
				enrg	JEROME CHEN 28/06/06					size		sheet		
				chr	GARY HSIEH 28/06/06					51915-132		3 of 4		
				appd	JOSEPH HSIA 28/06/06									
sheet index	revision		sheet											

cage code 22526

Pro/E

Tous droits strictement reserves. Reproduction ou communication a des tiers interdite sous quelque forme que ce soit sans autorisation écrite du propriétaire. Propriete de c FCI. Droits de reproduction FCI.



All rights strictly reserved. Reproduction or issue to third parties in any form whatever is not permitted without written authority from the proprietor. Property of FCI. Copyright FCI.

PRODUCT NUMBER  
51915-132\_\_  
NOTE 3

NOTES:

1. DIMENSIONS AND TOLERANCES ARE IN ACCORDANCE WITH ASME Y14.5M, 1994 UNLESS OTHERWISE SPECIFIED.

CONNECTOR NOTES:

- 2. HOUSING MATERIAL: UL 94 V-0 GLASS FILLED  
HIGH-TEMP THERMOPLASTIC  
POWER CONTACT MATERIAL: COPPER ALLOY  
SIGNAL PIN MATERIAL: COPPER ALLOY
  - 3. PLATING:  
51915-132, 51915-132LF PLATING SPEC. WAS SHOWN IN THE PRINT OF 10064183.
  - 4. MANUFACTURER'S NAME, P/N, AND DATE CODE TO APPEAR ON THIS SURFACE.
  - 5. PRODUCT SPECIFICATION GS-12-149.  
APPLICATION SPECIFICATION BUS-20-067.
  - 6. PACKAGED IN TRAYS.
- PCB NOTES:
- 7. ALL HOLE DIAMETERS ARE FINISHED HOLE SIZE.
  - 8. MOUNTING HOLES, WHERE APPLICABLE, ARE UNPLATED.
  - 9.  $\varnothing 1.151 \pm 0.025$  DRILLED HOLES PLATED WITH  
0.008 MIN SnPb or Sn OVER 0.03  
TO 0.08 Cu PLATING TO ACHIEVE  
 $\varnothing 1.02 \pm .07$  HOLE.
  - 10. "DIM XXX" TO BE DETERMINED BY THE CUSTOMER.
  - 11. CONNECTOR KEEP-OUT ZONE.

mat'l code				SEE NOTE 2		tolerances unless otherwise specified		CUSTOMER		FCI		www.fciconnect.com	
lfr	ecm no.	dr	date	linear	0.X ± 0.3	COPY		projection		title			
A					0.XX ± 0.13					12P+24S			
				angles	0.XXX ± 0.051					R/A STB RECEIPT			
				dr	JULIA WANG 28/06/06			product family		PwrBlade		code	
				enrg	JEROME CHEN 28/06/06			size		dwg no		213	
				chr	GARY HSIEH 28/06/06			scale		51915-132		sheet	
				appd	JOSEPH HSIA 28/06/06			1:1		A		4 of 4	
sheet index		revision sheet											

cage code 22526