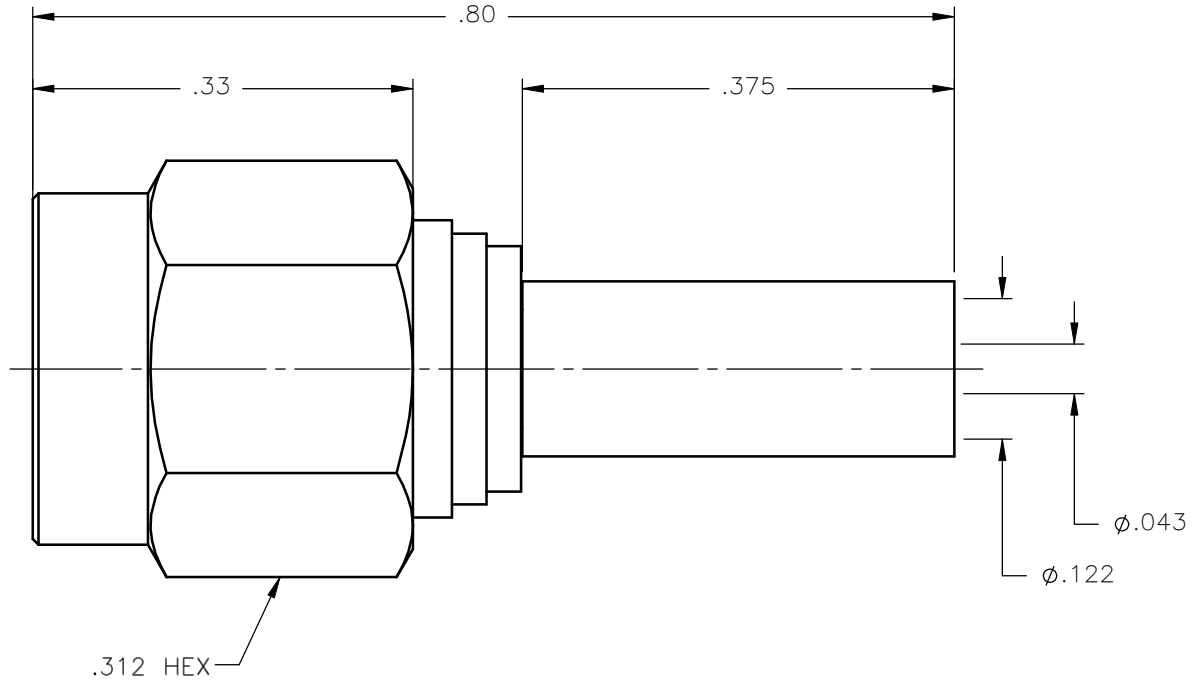
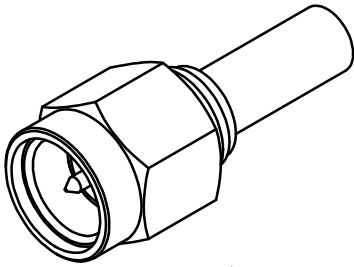


| REVISIONS | | | |
|-----------|-----------------|----------|----------|
| REV. | DESCRIPTION | DATE | APPROVED |
| A | INITIAL RELEASE | 08/23/10 | M.J. |




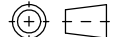
NOTES:

MATERIALS:

1. BODY & COUPLING NUT = STAINLESS STEEL PER ASTM A582, ALLOY 303, CONDITION "A".
2. INSULATORS = VIRGIN WHITE TEFLON PER ASTM D1710, GRADE 1, TYPE I, CLASS "B".
3. CONTACT & RETAINING RING = BERYLLIUM COPPER PER ASTM B196, ALLOY C17300, TEMPER TD04.
4. BUSHING = BRASS PER ASTM B16, ALLOY C36000, TEMPER H02.
5. CRIMP SLEEVE = SEAMLESS LOWLEAD BRASS TUBE, ALLOY 330, SOFT ANNEAL TEMPER, .025/.060 GRAIN SIZE OR SEAMLESS COPPER TUBE PER ASTM B75, TYPE C12000, TEMPER: LIGHT ANNEAL Q50 EXCEPT YIELD STRENGTH.
6. GASKET = SILICONE RUBBER PER ZZ-R-765, CLASS 2B, GRADE 65-75.
7. SHRINK SLEEVE = THERMOFIT SCL, BLACK (NOT SHOWN).

FINISHES:

1. CONTACT = GOLD PLATE PER MIL-G-45204, TYPE II, CLASS 1, GRADE C, OVER .00010 TO .00020 STRESS FREE SULFAMATE NICKEL PER QQ-N-290.
2. CRIMP SLEEVE & BUSHING = NICKEL PLATE PER QQ-N-290, CLASS 1, GRADE G, EXCEPT .0001 TO .0002 THICK OVER .00005 TO .0001 THICK COPPER PER MIL-C-14550.
3. ALL OTHER METAL PARTS = PASSIVATE PER QQ-P-35, TYPE VI.

| | | | | | | | |
|---|-----------------------|----------|---|--|----------|---------------|-----|
| UNLESS OTHERWISE SPECIFIED DIMENSIONS ARE IN INCHES TOLERANCES ON | DWN: | DATE |  | Property of Radiall | | | |
| | M.J. | 08/23/10 | | This document cannot be reproduced or communicated to a third party without prior written permission of RADIALL. | | | |
| DECIMAL | ANGLE | CHKD: | DATE | SMA STRAIGHT PLUG CRIMP TYPE FOR RG-178 & SIMILAR CABLES | | | |
| | | D.N. | 08/23/10 | | | | |
| | | APVD: | DATE | SIZE | FSCM NO. | DWG NO. | REV |
| | | J.M. | 08/23/10 | A | 19505 | 9001-9023-002 | A |
| REFERENCE: | MATERIALS & FINISHES: | | SCALE | THIRD ANGLE PROJECTION | | SHEET 1 OF 1 | |
| ORIGINATED: M.J. DATE: 08/23/10 | SEE NOTES | | 6:1 |  | | | |

9001-9023-002