

6

5

4

3

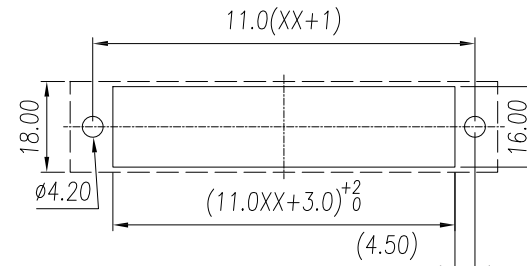
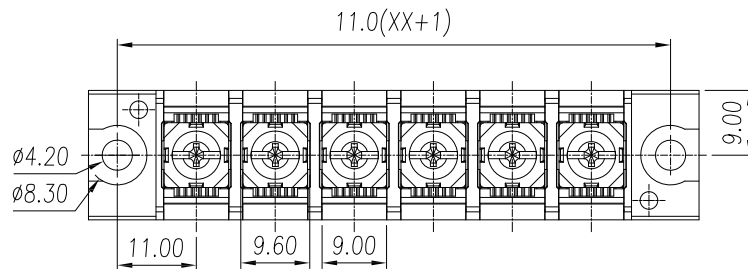
2

1

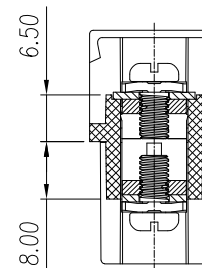
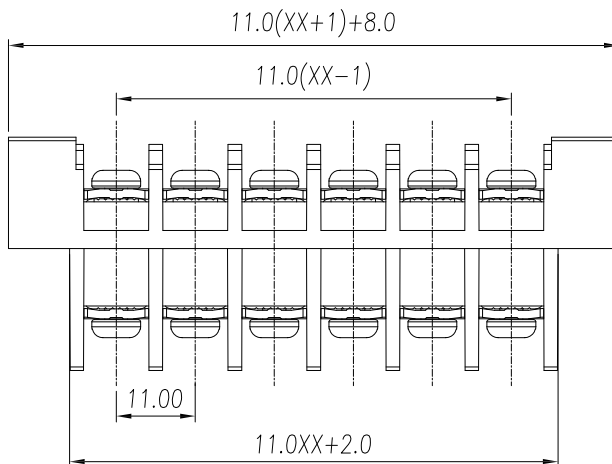
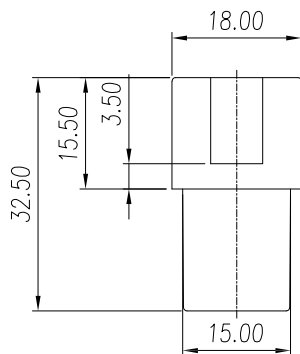
APPROVED: _____

DATE: _____ TITLE: _____

Rev	AWO #	Description	Date	Appr
-		RELEASED	11/26/18	



RECOMMENDED MOUNTING CUT-OUT



Poles: 02 thru 15

linear dimension (Tolerances Standard)								—	∕	⊥
variable		over	over	over	over	over	over		over	over
range	to	6	10	30	60	100	160	to	10	100
	to	10	30	60	100	160	to	10	100	to
tolerance	±0.20	±0.30	±0.50	±0.70	±1.00	±1.30	±1.60	0.10	0.30	0.60

SPECIFICATIONS:

Material:

Insulator: PBT, rated UL 94V-0

Insulator color: Black

Contacts: Copper Alloy, Tin plated

Screw: M4 Steel

Electrical:

Voltage rating: 300 V

Current rating: 30 A

Dielectric withstanding voltage: 2,000 VAC for 1 minute

Mechanical:

Wire Range: 22~10 AWG

Torque: 1.8 (N.m)

Temperature Rating:

Operating temperature: -40°C to +130°C

Environmental:

Lead free, RoHS compliant.



UNLESS OTHERWISE SPECIFIED ALL DIMENSIONS ARE MILLIMETERS TOLERANCES: EXCEPT AS NOTED

SEE CHART



909 Rahway Avenue, Union, NJ 07083 Phone: 908-687-5000 Fax: 908-687-5710

APPROVALS		DATE
DRAWN	AY	11/26/18
CHECKED	AC	11/26/18
APPROVED		

TITLE			
TERMINAL BLOCK, .433 [11.00] PITCH			
SIZE	PART NO.	REV.	
X	TBU-XX-W1	-	
REF:	S00067C	SCALE:	NTS
		SHEET 1 OF 1	

6

5

4

3

2

1