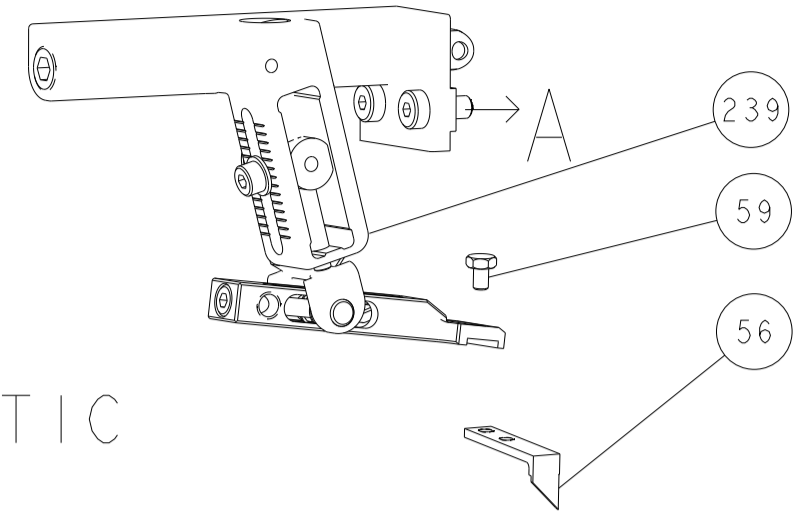


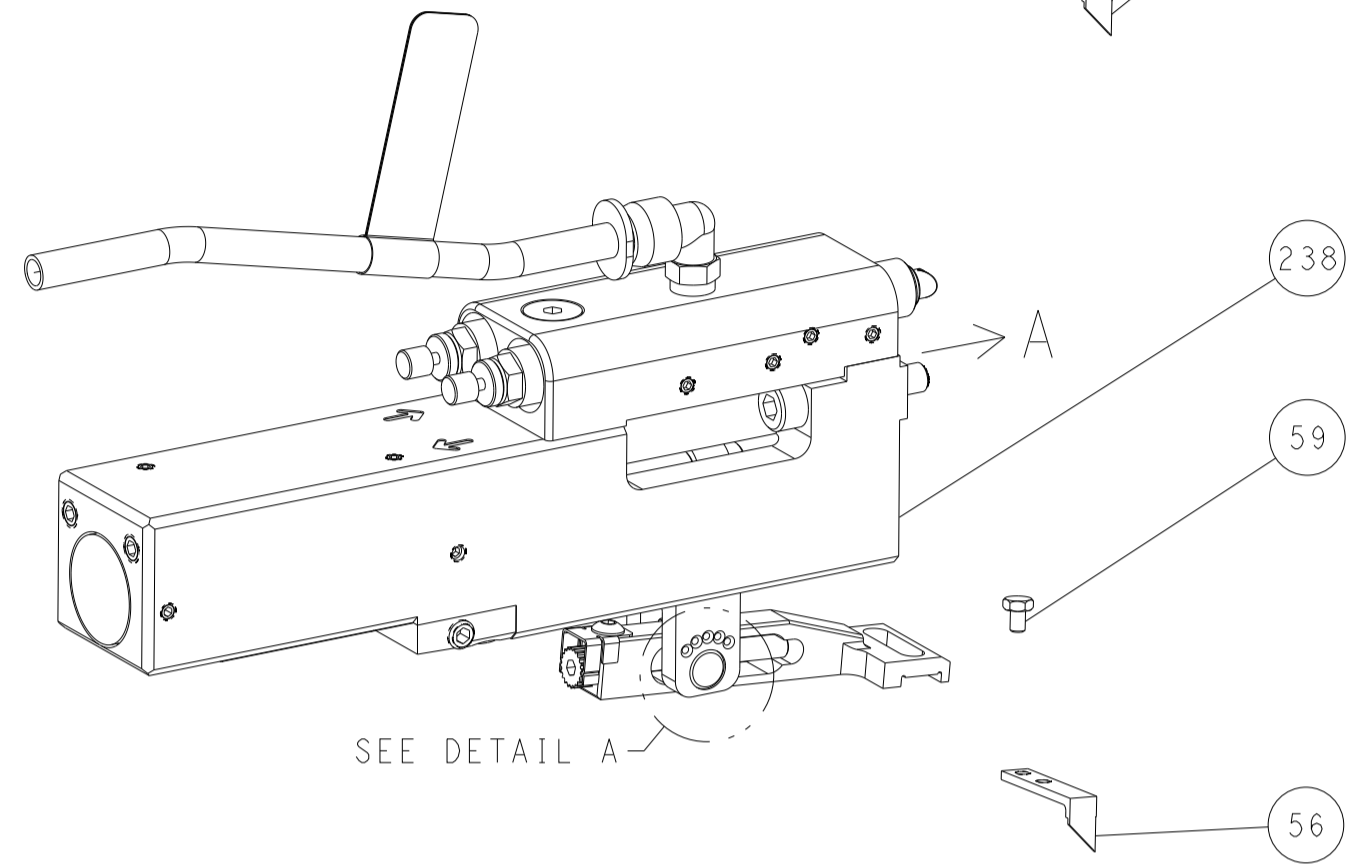


LOC	DIST	REVISIONS					
A	66	P	LTN	DESCRIPTION	DATE	DWN	APVD
		-		SEE SHEET 1			

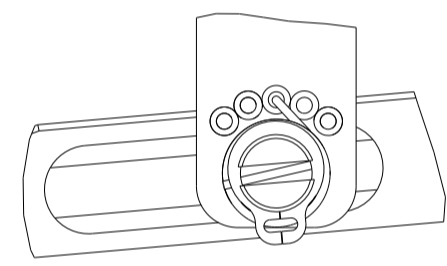
# FEED TYPE MECHANICAL



## PNEUMATIC

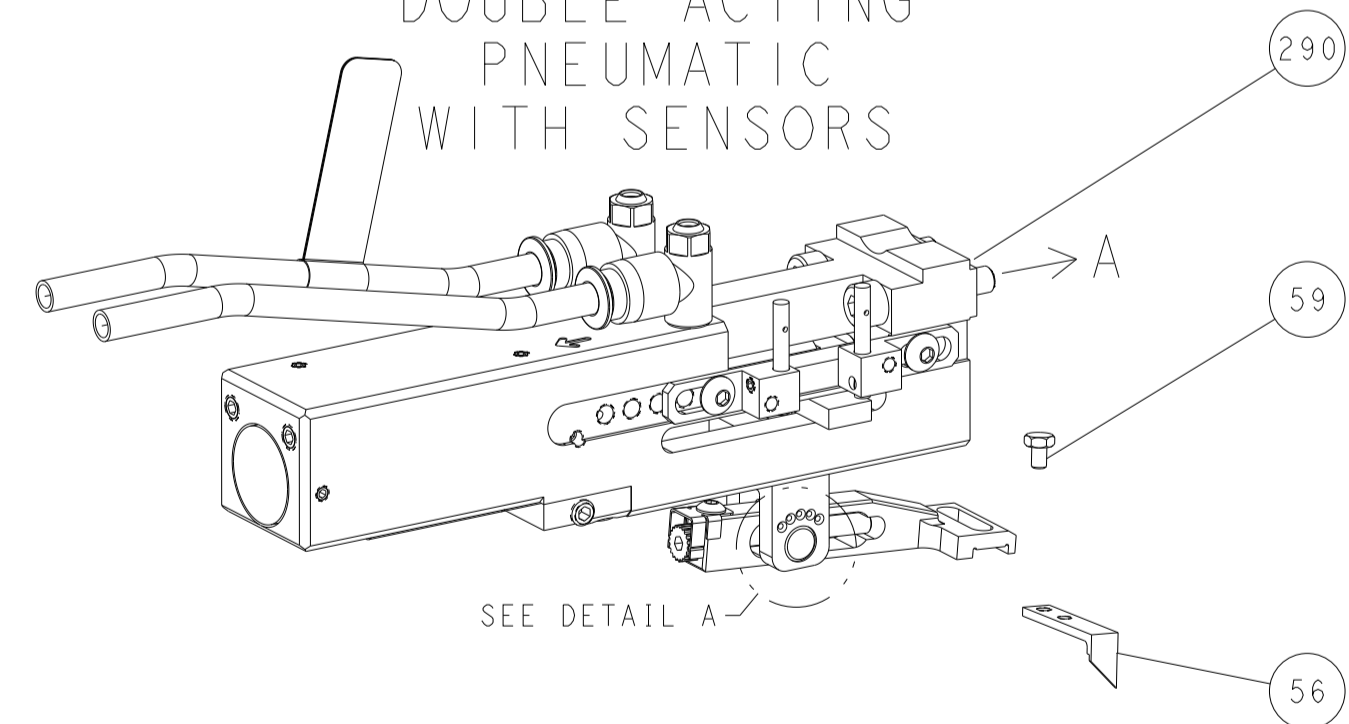


## FEED SPRING SETTING POSITION (SHOWN FROM REAR SIDE)

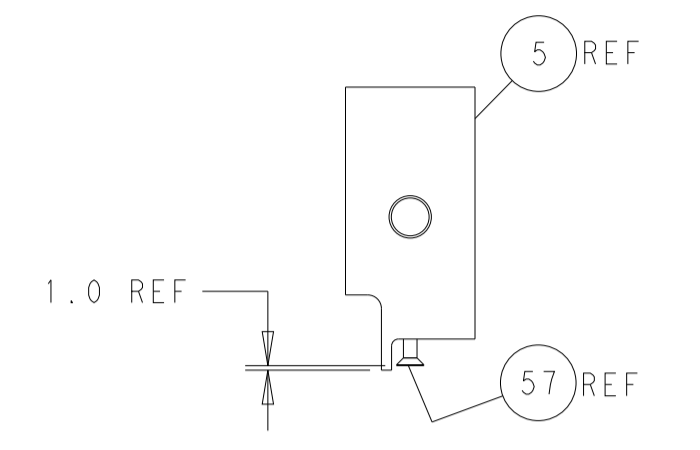
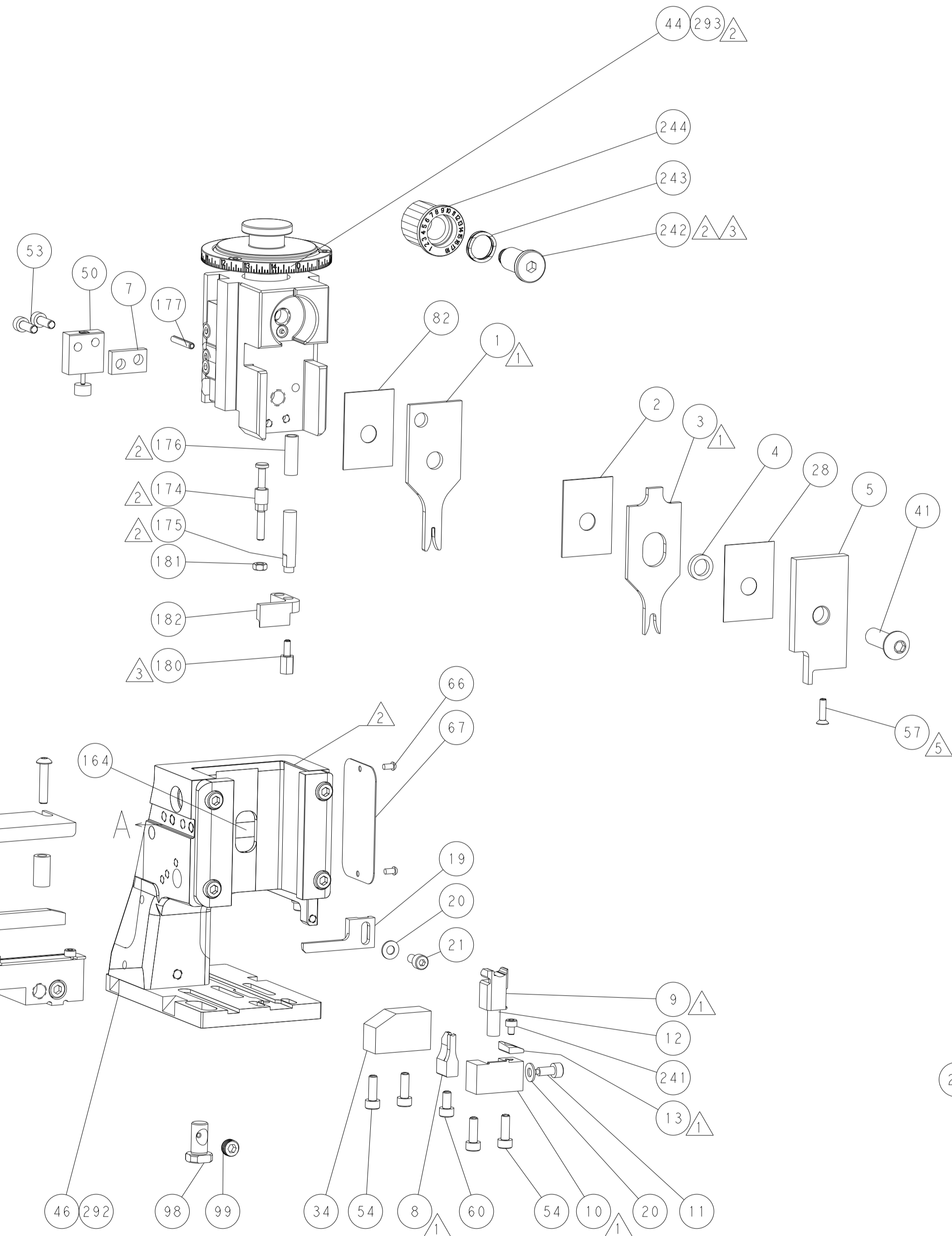
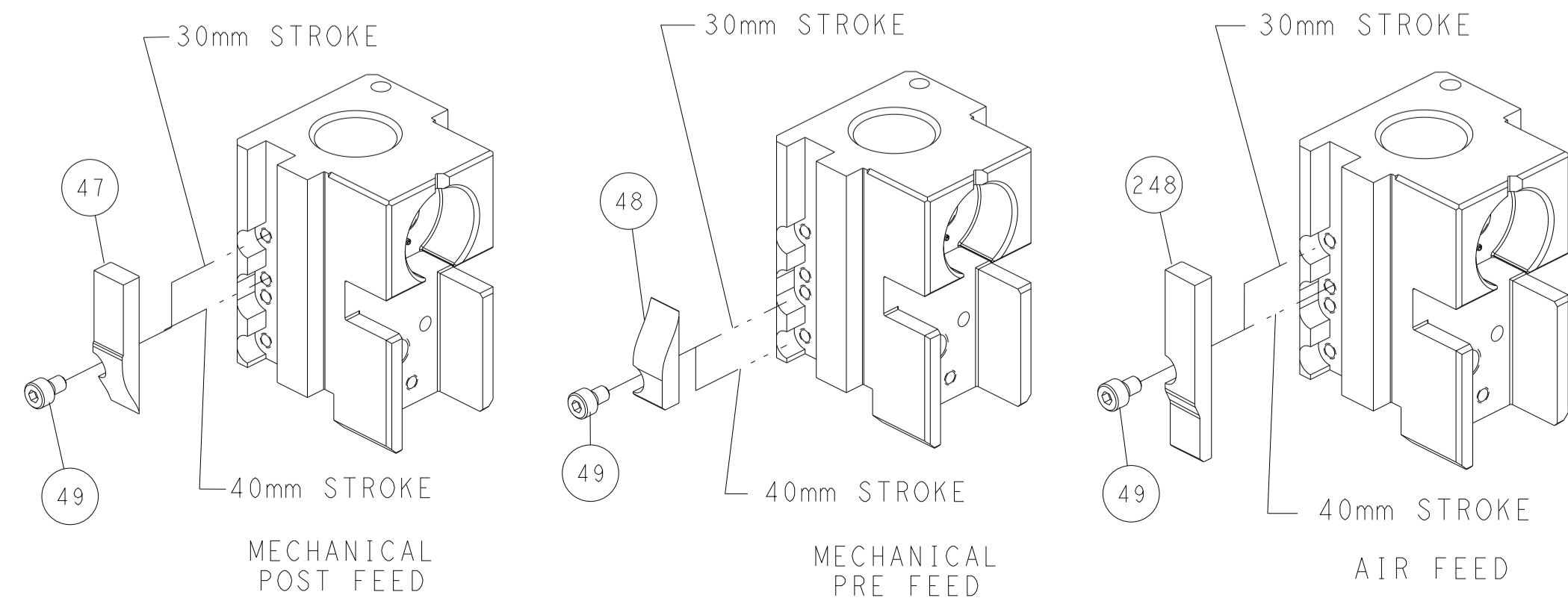


DETAIL A

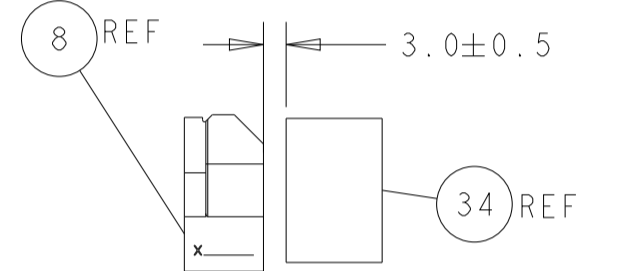
## DOUBLE ACTING PNEUMATIC WITH SENSORS



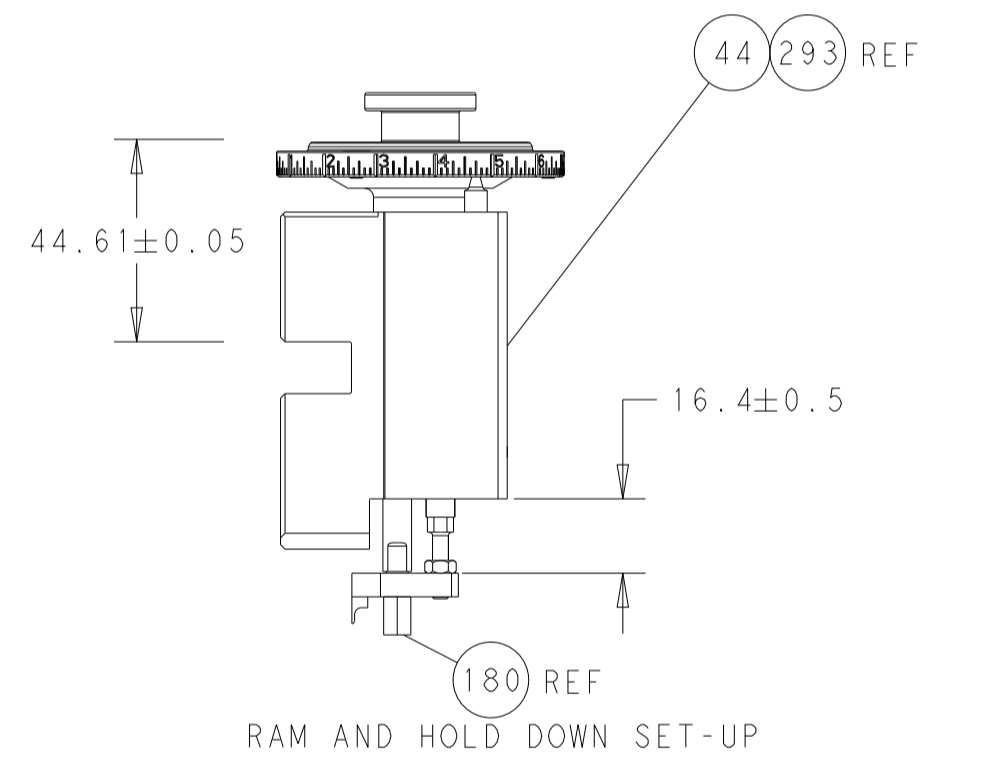
# CAM POSITIONS



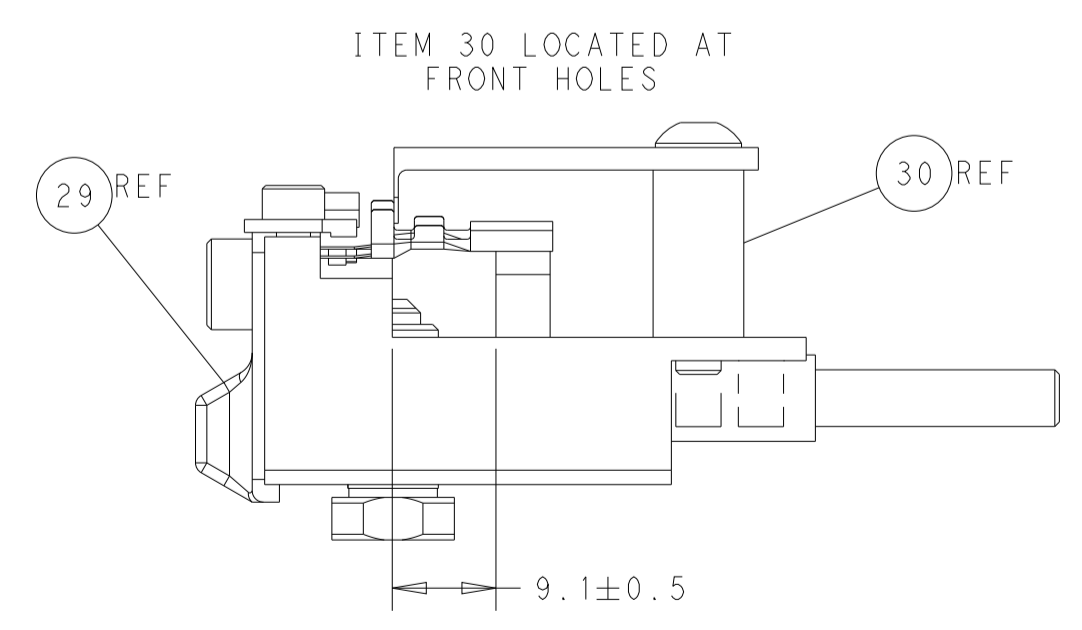
SHEAR DEPRESSOR DETAIL



TERMINAL SUPPORT LOCATION



RAM AND HOLD DOWN SET-UP



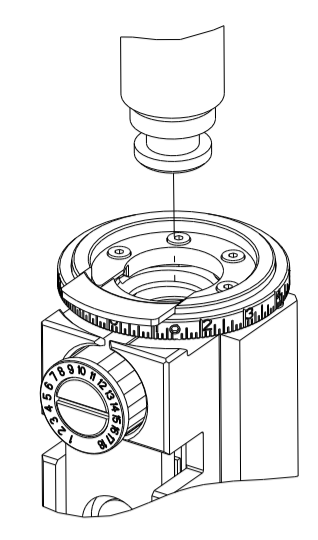
FEED TRACK POSITION GUIDE BY INSULATION BARREL

**ATLANTIC VERSION**  
 Shown on sheets 1 of 4 & 2 of 4  
 (Pacific version shown on sheets 3 of 4 & 4 of 4)

<small>THIS DRAWING IS UNPUBLISHED. RELEASED FOR PUBLICATION BY TYCO ELECTRONICS CORPORATION. ALL RIGHTS RESERVED.</small>		DWN: R. HUANG 02SEP2011 CHK: S. XI 02SEP2011 APVD: S. XI 02SEP2011 PRODUCT SPEC: - APPLICATION SPEC: - WEIGHT: - MATERIAL: -	NAME: Ocean Side Feed Applicator SIZE: A1 CAGE CODE: 00779 DRAWING NO: 2151036 SCALE: 1:2 SHEET: 2 of 4 REV: L2	TE Connectivity Harrisburg, PA 17105-3608
--	--	--	---	--

PART NUMBER	REVISION	DESCRIPTION	FEED TYPE
2-2151036-1	L	FINE CRIMP HEIGHT ADJUST	MECHANICAL
2-2151036-2	L	FINE CRIMP HEIGHT ADJUST	PNEUMATIC
4-2151036-2	L	FINE CRIMP HEIGHT ADJUST	DOUBLE ACTING PNEUMATIC WITH SENSORS
7-2151036-7	A	CRIMP TOOLING KIT	-

PACIFIC VERSION TERMINATOR INTERFACE ADAPTER



APPLICATOR DATA

CRIMP	SIZE	TYPE
WIRE	1.40 mm [.055]	F
INSUL	3.18 mm [1.25]	O

APPLICATOR INSTRUCTIONS 408-35042

TERMINAL DATA: TE TERMINAL TE CRIMP SPECIFICATION

TERMINAL NAME: MCP 1.2 WITH LOCKING LANCE

WIRE STRIP LENGTH	INSULATION DIAMETER RANGE
3.30-3.90 mm [1.30-.154 IN]	Ø1.40-1.90 mm [.055-.075 IN]

TERMINAL APPLICATION SPECIFICATION 114-18464

TERMINALS APPLIED

TE TERMINAL	TE TERMINAL	TE SEAL	TE SEAL	CABLE DIAMETER
1452668-1	1718033-3		967067-1	1.4-2.1
1452668-2		963142-2		0.9-1.3
1452668-3		963142-3		1.4-2.4

TERMINAL DATA: TE TERMINAL TE CRIMP SPECIFICATION

TERMINAL NAME: MCP 1.2 WITH LOCKING LANCE

WIRE STRIP LENGTH	INSULATION DIAMETER RANGE
3.30-3.90 mm [1.30-.154 IN]	Ø1.40-1.90 mm [.055-.075 IN]

TERMINAL APPLICATION SPECIFICATION 114-18464

TERMINALS APPLIED

TE TERMINAL	TE TERMINAL	TE SEAL	TE SEAL	CABLE DIAMETER
7-1452668-1			967067-1	1.4-2.1
7-1452668-2		963142-2		0.9-1.3
7-1452668-3		963142-3	963142-1	1.4-2.4
		967067-2		0.9-1.4
		2098582-1		1.35-2.1

WIRE SIZE	CRIMP HEIGHT mm [INCH]	CRIMP HEIGHT REFERENCE SETTING
0.75mm <sup>2</sup>	1.05 +/- 0.03 [.041 +/- .001]	6.7
20 AWG OR 0.50mm <sup>2</sup>	0.93 +/- 0.03 [.037 +/- .001]	8.0

WIRE SIZE	CRIMP HEIGHT mm [INCH]	CRIMP HEIGHT REFERENCE SETTING
0.75mm <sup>2</sup>	0.98 +/- 0.03 [.039 +/- .001]	7.1
20 AWG OR 0.50mm <sup>2</sup>	0.93 +/- 0.03 [.037 +/- .001]	8.0

- 1 RECOMMENDED SPARE PARTS
- 2 REFER TO SUPPLIED INSTRUCTION SHEET FOR CLEANING, LUBRICATION AND STORAGE OF APPLICATOR.
- 3 APPLY PART NUMBER 2-23419-6 LOCTITE TO THREADS OF ITEM 242.
- 4 CRIMP HEIGHT REFERENCE SETTING WAS THE SETTING USED WHEN THE APPLICATOR WAS QUALIFIED AT THE FACTORY. ADJUSTMENT MAY BE NECESSARY WHEN RUNNING APPLICATOR IN THE FIELD.
- 5 APPLY TORO-SEAL IN ALLEN SOCKET TO FILL HOLE AFTER FLAT HD HAS BEEN ADJUSTED TO CORRECT HEIGHT AT QUALIFICATION. APPLY #1-23419-5 LOC-TITE TO THREADS.
- 6 THIS APPLICATOR IS EQUIPPED WITH THE DOUBLE ACTING FEED WITH SENSORS AND IS APPLICATION SPECIFIC AND DOES NOT REQUIRE ITEMS 49 & 151.
- 7 TERMINAL LUBRICANT IS RECOMMENDED.
- 8 UNLESS SPECIFIED OTHERWISE TORQUE VALUES SHALL BE USED PER DOCUMENT, 101-35000.

**\*WARNING**  
 ON INSTALLATION, SET WIRE DISC TO CRIMP HEIGHT REFERENCE SETTING FOR LARGEST WIRE SIZE. CRIMP HEIGHT REFERENCE SETTINGS GREATER THAN THE VALUE SHOWN MAY CAUSE DAMAGE TO THE CRIMP TOOLING, REFER TO THE INSTRUCTION SHEET FOR PROPER SETUP AND ADJUSTMENTS.

ENTRY LEVEL APPLICATOR		ITEM SUBSTITUTION LIST		
PART NUMBER	SAME AS	ITEM	ITEM DESCRIPTION	SUBSTITUTE PART NUMBER
8-2151036-1	2151036-1	1	WIRE CRIMPER	1-1803530-7
8-2151036-2	2151036-2	3	INSULATION CRIMPER	1803624-1
9-2151036-1	2-2151036-1	46	BASIC SUB -ASSEMBLY	1803940-9
9-2151036-2	2-2151036-2	141	BASIC SUB -ASSEMBLY LUBRICATOR	1-1803940-0 DELETE

PACIFIC VERSION  
 Shown on sheets 3 of 4 & 4 of 4  
 (Atlantic version shown on sheets 1 of 4 & 2 of 4)

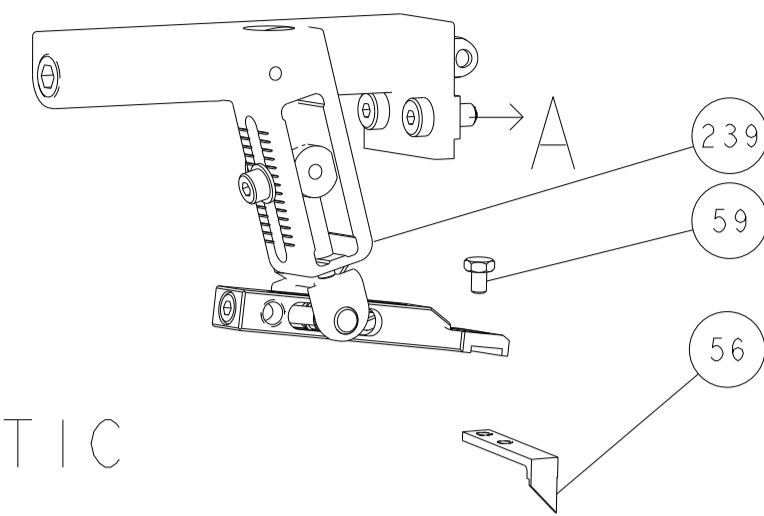
LOC	DIST	REV	DATE	BY	APPV
A	66	-	-	-	-

REV	DATE	BY	APPV	DESCRIPTION	ITEM NO
-	1	-	-	2844950-1 AIR FEED MODULE	290
-	1	1	1	2119082-4 CAM, SNAIL, INSULATION ADJUSTMENT	244
-	1	1	1	2079764-1 WASHER, WAVE SPRING, CREST-TO-CREST	243
3	-	1	1	2119083-1 RETAINER, INSULATION DIAL	242
-	1	1	1	7-18023-7 SCR, SKT HD CAP M3 X 4.0	241
-	-	-	-	2119580-1 MECHANICAL FEED ASSEMBLY	239
-	-	1	-	2844940-1 AIR FEED MODULE	238
-	REF	REF	REF	994970-2 COUNTER, MAGNETIC	164
6	-	-	-	2119641-2 FEED CAM, AIR FEED	151
-	1	1	1	2168083-8 SCR, SKT HD CAP, RoHS, M4 X 16	144
-	4	4	4	2168083-9 SCR, SKT HD CAP, RoHS, M4 X 20	143
-	-	-	-	2119653-2 FEED CAM, POST FEED	142
-	1	1	1	1-1803583-0 APPLICATOR BASIC ASSEMBLY, SF	141
-	1	1	1	1803516-1 RAM ASSEMBLY, SF PACIFIC	140
7	-	1	1	2119955-1 ASSY, LUBRICATOR, SIDE FEED	113
-	1	1	1	2844908-1 SCREW, LOCKING	99
-	1	1	1	2844907-1 POST, LOCKING	98
-	1	1	1	455888-5 SPACER, CRIMPER	82
-	2	2	2	2168083-1 SCR, SKT HD CAP, RoHS, M3 X 8.0	79
-	1	1	1	1633782-2 FENCE	78
-	1	1	1	1803607-3 DOCUMENTATION PACKAGE	71
-	1	1	1	2119740-1 TAG, IDENTIFICATION	67
-	2	2	2	2168078-1 SCREW, DRIVE, RH, RoHS, 2 x .188	66
-	1	1	1	5-18022-5 SCR, HEX HD CAP, M4 X 6.0	59
5	-	1	1	985575-4 SCR, FLT SKT HD CAP M3 X 12.0	57
-	1	1	1	1338685-1 PAWL, FEED	56
-	2	2	2	2168083-3 SCR, SKT HD CAP, RoHS, M4 X 12.0	53
-	1	1	1	1803382-6 HOLD DOWN, SPRING LOADED	50
-	-	1	2	18023-9 SCR, SKT HD CAP M4 X 6.0	49
-	-	-	-	2119652-1 FEED CAM, PRE FEED	48
-	1	1	1	1803602-1 SCR, BHSC, RoHS (M8 X 25)	41
-	1	1	1	1752356-6 SUPPORT, TERMINAL	34
-	2	2	2	2079383-5 SCR, BHSC, RoHS (M4 X 20)	33
-	2	2	2	2-2844962-8 SPACER, CYLINDRICAL, STRIP GUIDE	30
-	1	1	1	2844992-2 ASSEMBLY, STRIP GUIDE	29
-	1	1	1	455888-3 SPACER, CRIMPER	28
-	1	1	1	1320928-2 STRIP GUIDE	24
-	1	1	1	2168083-2 SCR, SKT HD CAP, RoHS, M4 X 8.0	21
-	2	2	2	1-18028-2 WASHER, FLAT, REG M4	20
-	1	1	1	2119533-1 STRIPPER, SIDE FEED	19
1	-	1	1	2119806-1 INSERT, SHEAR	13
-	1	1	1	3-22280-3 SPRING, COMPRESSION	12
-	1	1	1	1-356885-4 STOP, SHEAR	11
-	1	1	1	2119805-1 SHEAR HOLDER, FRONT	10
-	1	1	1	318707-1 FLOATING SHEAR, FRONT	9
1	1	1	1	6-1333201-7 ANVIL, COMBINATION	8
-	1	1	1	240641-1 SPACER	7
-	1	1	1	2119781-1 DEPRESSOR, SHEAR	5
-	1	1	1	238011-4 BLOCK, CRIMPER SPACER	4
1	1	1	1	1633965-1 CRIMPER, INSULATION O PREMIUM	3
-	1	1	1	455888-7 SPACER, CRIMPER	2
1	1	1	1	1-456402-7 CRIMPER, WIRE PREMIUM	1

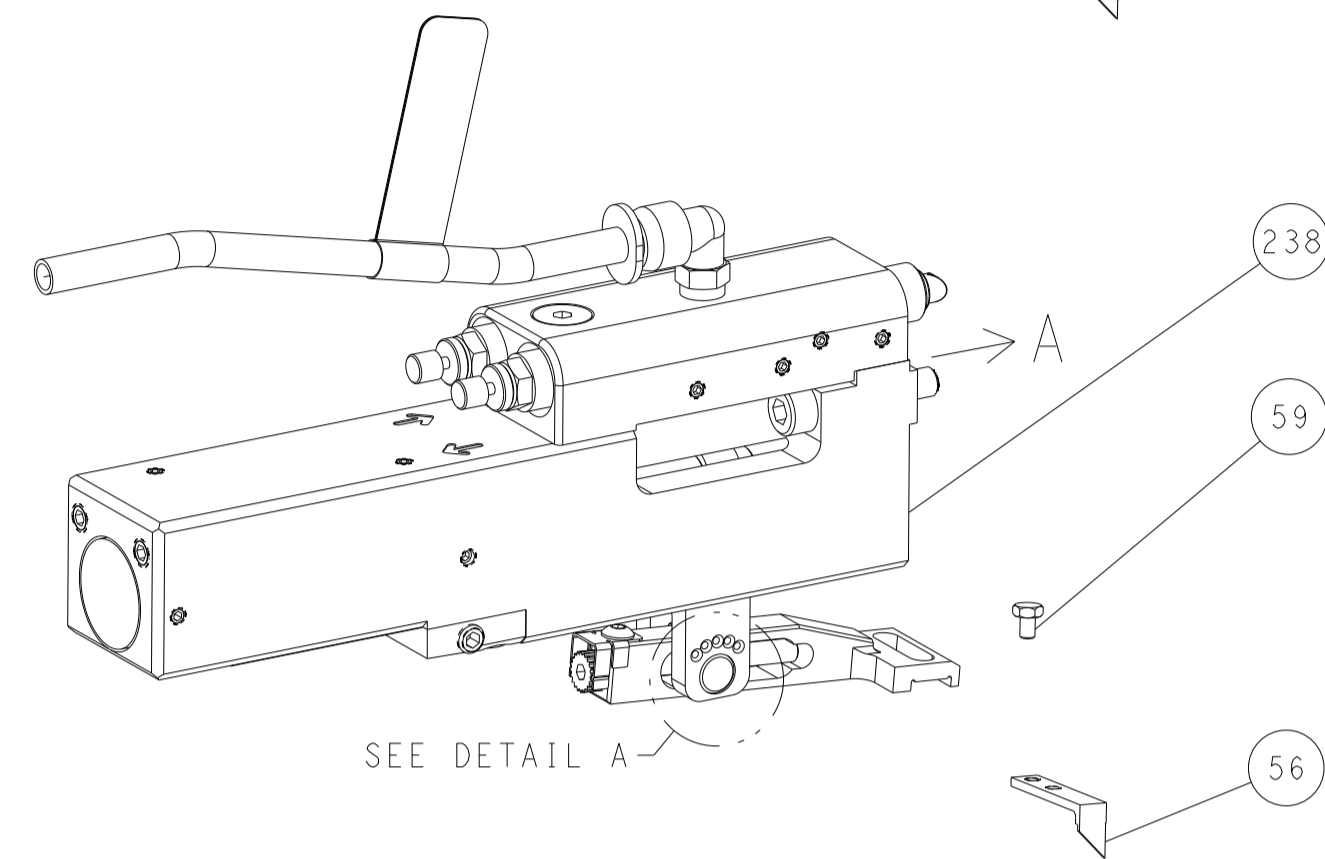
DIMENSIONS: mm		TOLERANCES UNLESS OTHERWISE SPECIFIED:		DWG: H. HUANG 02SEP2011	
0 PLC ±		0.15		CHK: S. XI 02SEP2011	
1 PLC ±		0.25		NAME: Ocean Side Feed Applicator	
2 PLC ±		0.50		SIZE: A1	
3 PLC ±		1.00		CAGE CODE: 00779	
4 PLC ±		2.00		DRAWING NO: C=2151036	
ANGLES		±		RESTRICTED TO: -	
FINISH		-		WEIGHT: -	
MATERIAL: -		-		SCALE: 1:2	
-		-		SHEET: 3 OF 4	
-		-		REV: 2	

LOC	DIST	REVISIONS					
A	66	P	LYN	DESCRIPTION	DATE	OWN	APVD
		-		SEE SHEET 1			

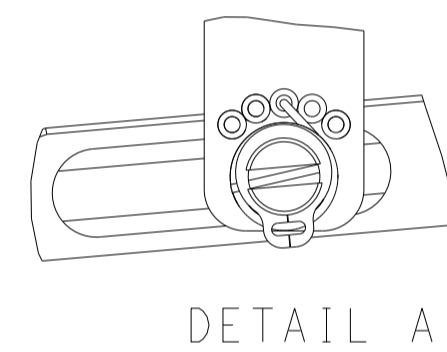
# FEED TYPE MECHANICAL



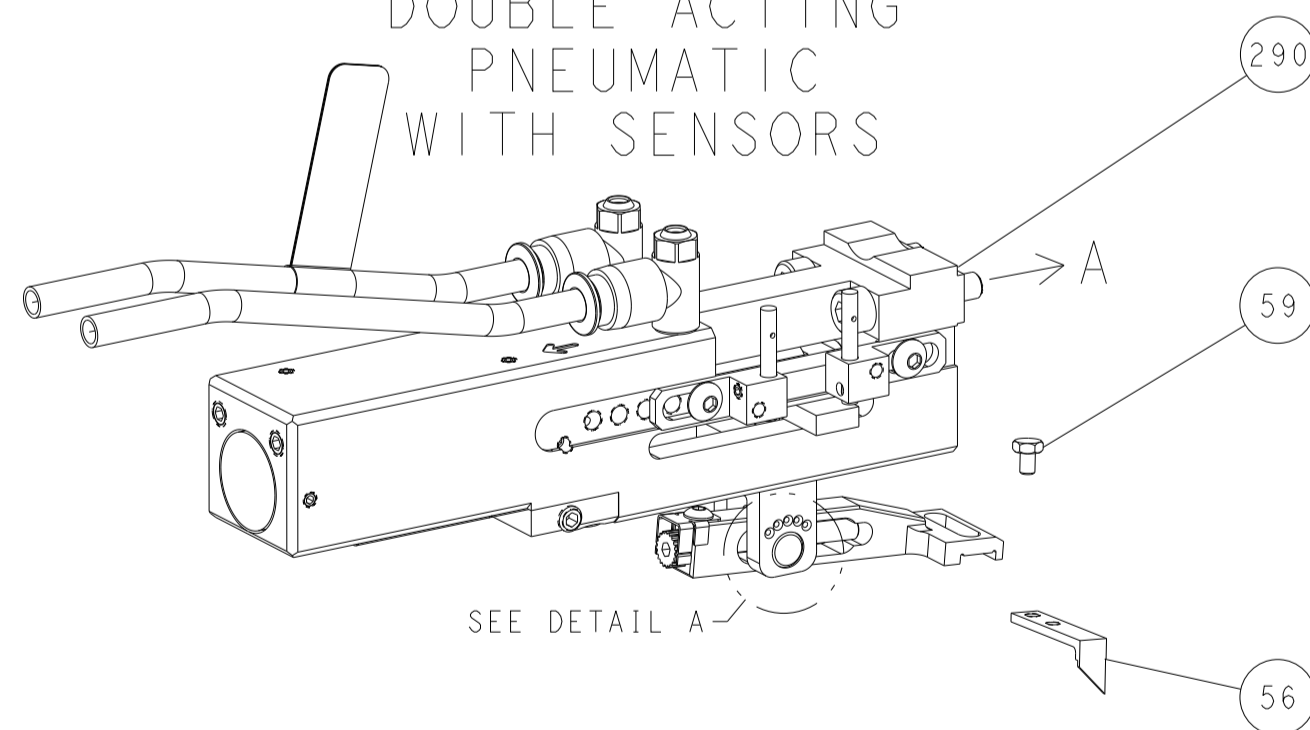
## PNEUMATIC



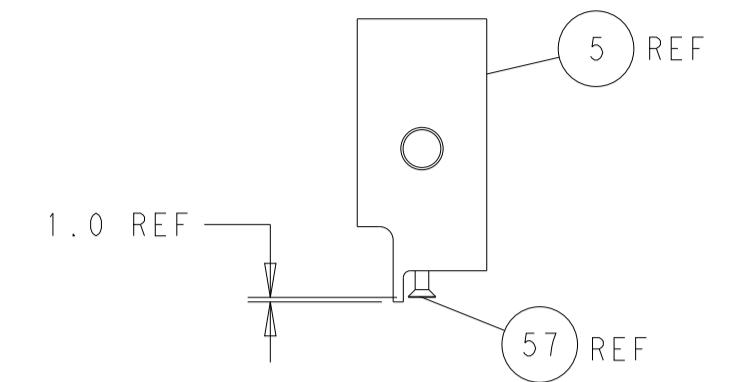
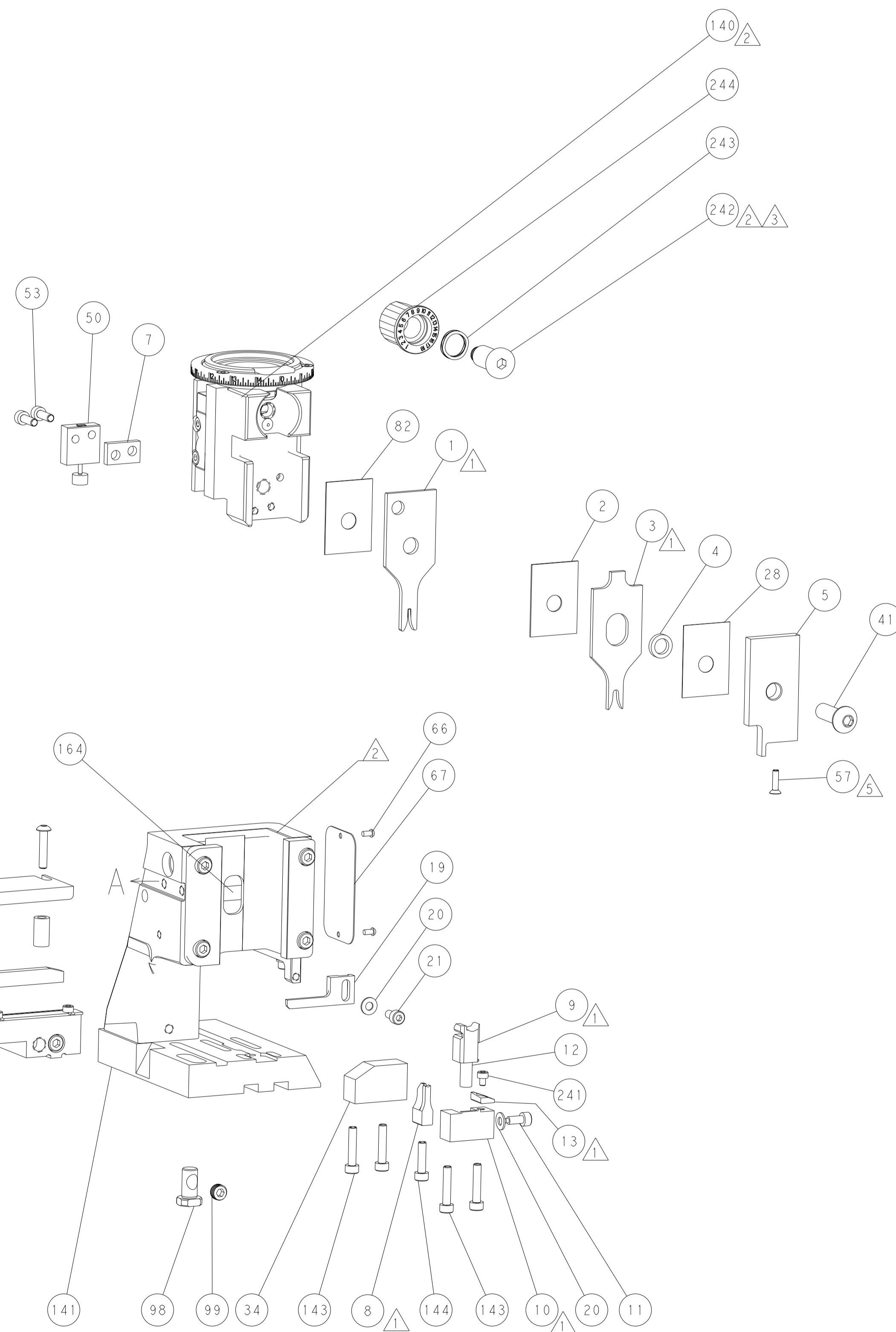
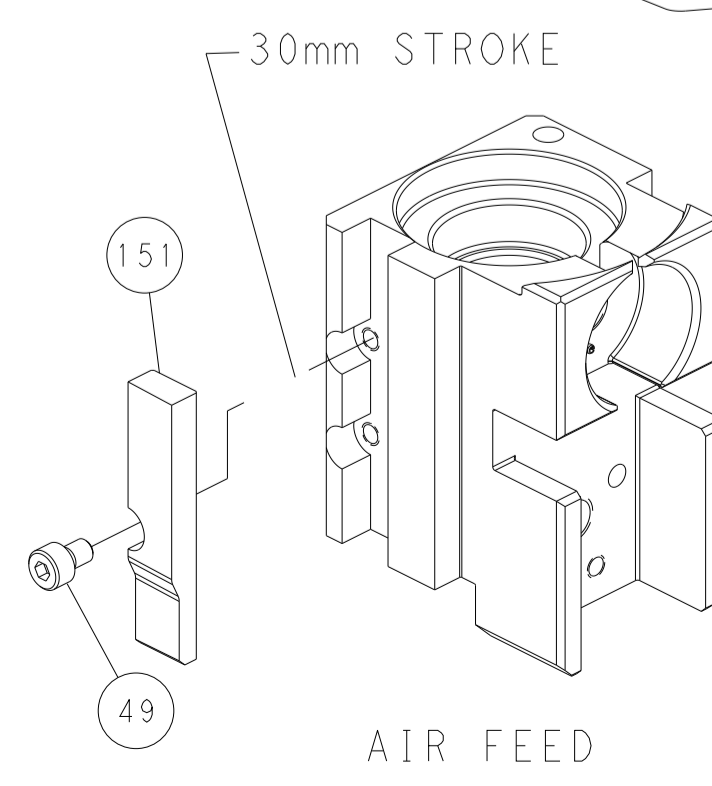
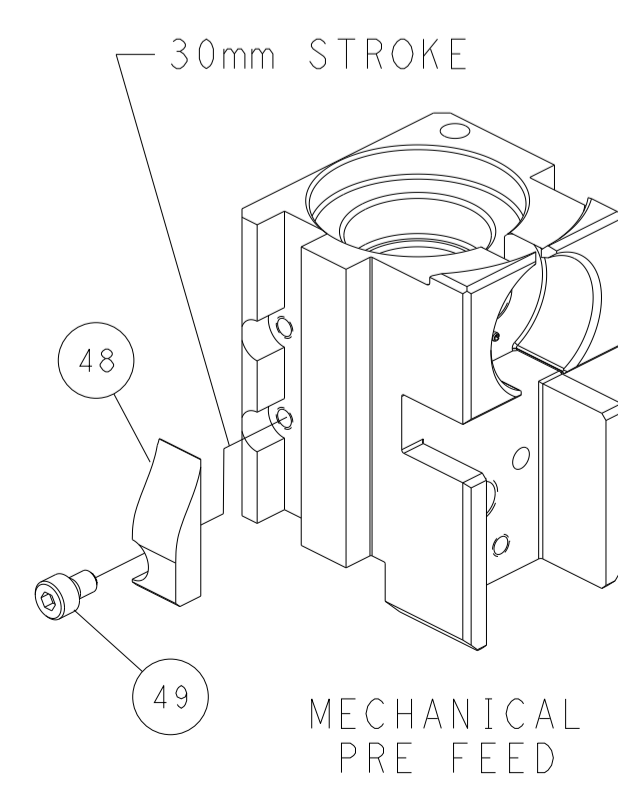
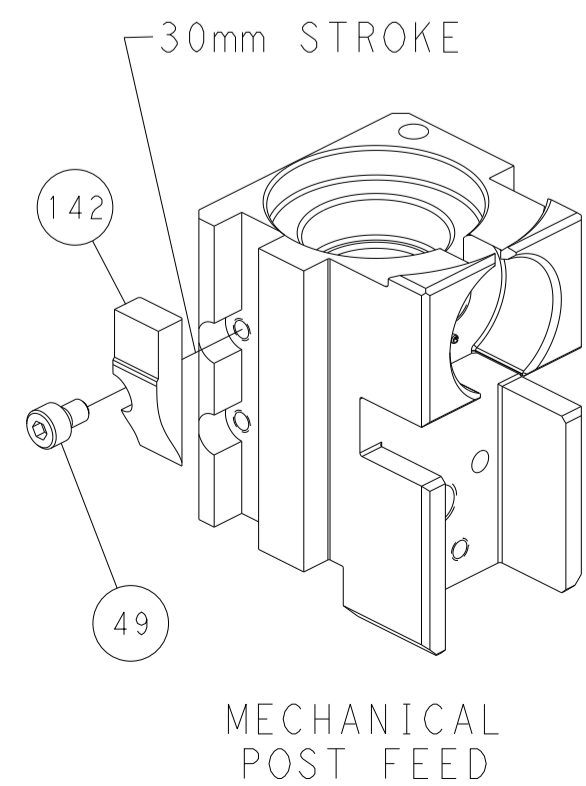
## FEED SPRING SETTING POSITION (SHOWN FROM REAR SIDE)



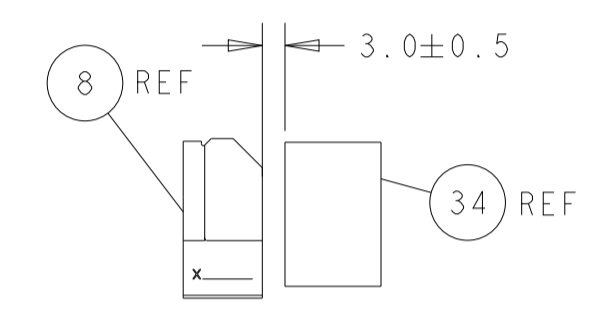
## DOUBLE ACTING PNEUMATIC WITH SENSORS



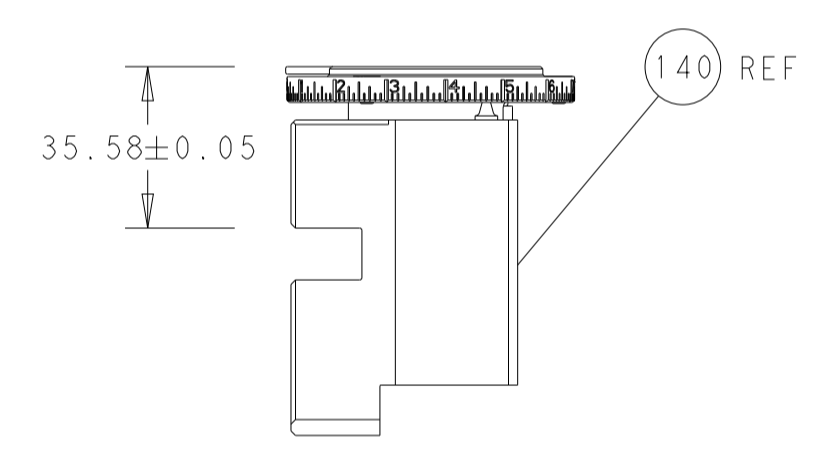
## CAM POSITIONS



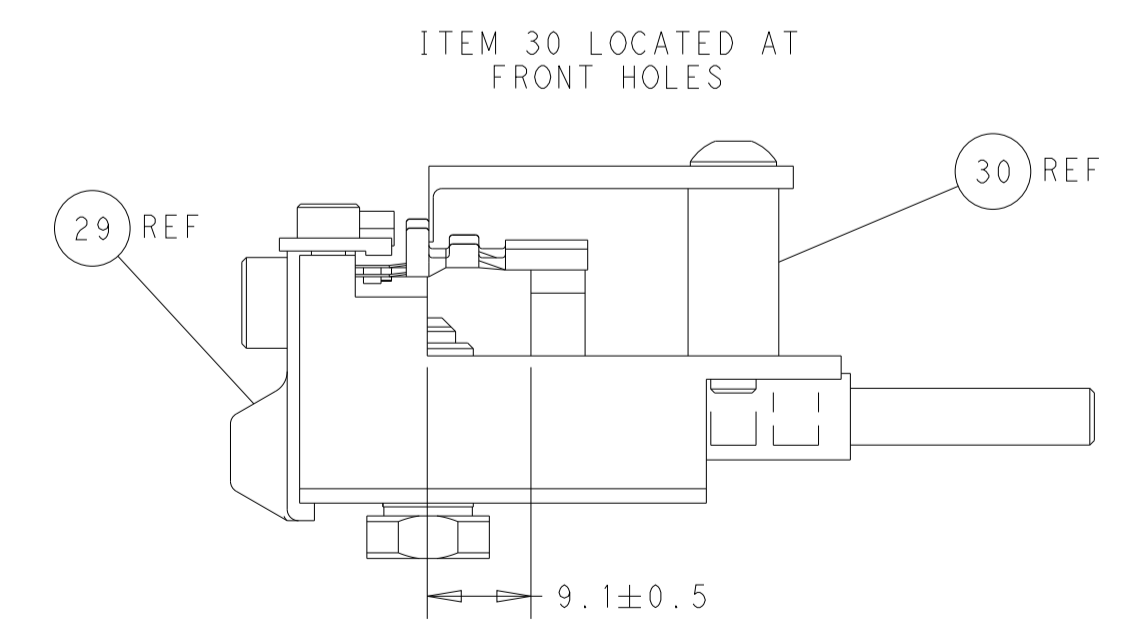
SHEAR DEPRESSOR DETAIL



TERMINAL SUPPORT LOCATION



RAM SET-UP



FEED TRACK POSITION GUIDE BY INSULATION BARREL

**PACIFIC VERSION**  
 Shown on sheets 3 of 4 & 4 of 4  
 (Atlantic version shown on sheets 1 of 4 & 2 of 4)

<small>THIS DRAWING IS A CONTROLLED DOCUMENT FOR TYCO ELECTRONICS CORPORATION. IT IS THE PROPERTY OF TYCO ELECTRONICS CORPORATION AND IS NOT TO BE REPRODUCED OR TRANSMITTED IN ANY FORM OR BY ANY MEANS, ELECTRONIC OR MECHANICAL, INCLUDING PHOTOCOPYING, RECORDING, OR BY ANY INFORMATION STORAGE AND RETRIEVAL SYSTEM, WITHOUT THE WRITTEN PERMISSION OF TYCO ELECTRONICS CORPORATION.</small>		DWN: R. HUANG 02SEP2011 CHK: S. XI 02SEP2011 APVD: S. XI 02SEP2011 PRODUCT SPEC APPLICATION SPEC WEIGHT: - SCALE: 1:2	NAME: Ocean Side Feed Applicator SIZE: A1 CAGE CODE: 00779 DRAWING NO: 2151036 SHEET 4 OF 4 REV L2
DIMENSIONS: mm TOLERANCES UNLESS OTHERWISE SPECIFIED: 0 PLC ± 1 PLC ± 2 PLC ± 3 PLC ± 4 PLC ± ANGLES FINISH ±		CUSTOMER ACCESSIBLE PRODUCTION DRAWING DATE: 02SEP2011 SCALE: 1:2 SHEET 4 OF 4 REV L2	