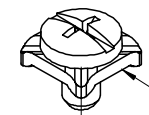
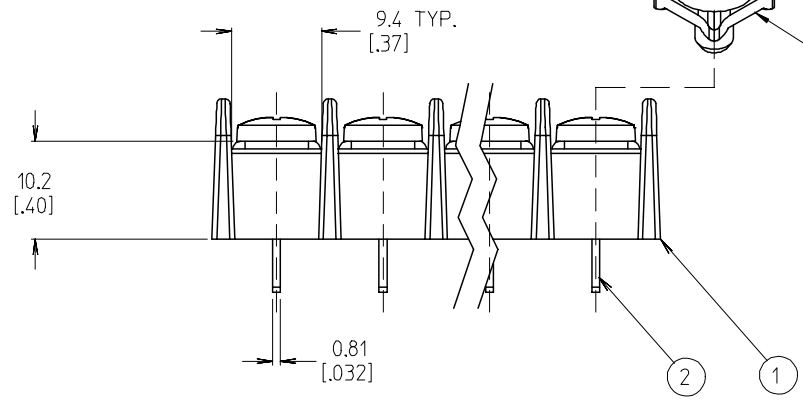
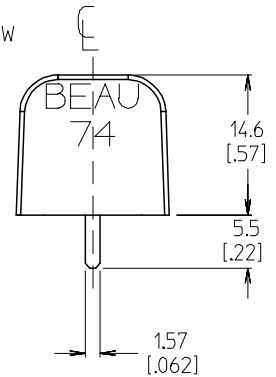


4 CIRCUIT SHOWN



4 REF -A-50 OPTION SCREW (WHERE APPLICABLE)



- NOTES:
1. MATERIAL: SEE TABLE
 2. FINISHES: SEE TABLE
 3. PRODUCT SPECIFICATION: NOT REQUIRED
 4. INCH DIMENSIONS ARE SHOWN IN BRACKETS [XXX].
 5. 'XX' REFERS TO THE QUANTITY OF CIRCUITS.
 6. ALL COMPONENTS ARE ROHS COMPLIANT.

| ITEM | QTY | DESCRIPTION | MATERIAL | FINISH |
|------|-----|---|---------------|---------------|
| 4 | XX | SCREW, #8-32X.250, PAN HD, PHIL-SLOT, W/WSHR (-A-50 OPTION) | STEEL | ZINC CHROMATE |
| 3 | XX | SCREW, #8-32X.290, BIND. HD, PHIL-SLOT (-A) | BRASS | NICKEL |
| 2 | XX | TERMINAL, PC | BRASS | TIN |
| 1 | 1 | INSULATOR, SINGLE ROW, MO (-C) | THERMOPLASTIC | BLACK |

| | | |
|---------------------|----------------|----------------|
| INITIAL RELEASE | 2006/09/28 | 2006/09/28 |
| EC NO: ETC2007-0073 | DRW: NEHLE | CHKD: JMACNEIL |
| | APPR: JMACNEIL | 2006/09/29 |
| DESCRIPTION | REV | |
| DESCRIPTION | REV | |

| QUALITY SYMBOLS | |
|-----------------|---------|
| | = 0.005 |
| | = 0.01 |

| GENERAL TOLERANCES (UNLESS SPECIFIED) | |
|---------------------------------------|--------|
| 4 PLACES | ± 0.3 |
| 3 PLACES | ± 0.13 |
| 2 PLACES | ± 0.05 |
| 1 PLACE | ± 0.01 |
| ANGULAR ± 2 ° | |

| | |
|---|--------------|
| DIMENSION STYLE | MM/IN |
| SCALE | 2:1 |
| DESIGN UNITS | INCH |
| THIRD ANGLE PROJECTION | |
| DRAWN BY | DATE |
| EHILE | 2006/08/31 |
| CHECKED BY | DATE |
| JMACNEIL | 2006/08/31 |
| APPROVED BY | DATE |
| JMACNEIL | 2006/08/31 |
| MATERIAL NO. | DOCUMENT NO. |
| SEE CHART | SD-38741-003 |
| SIZE | B |
| THIS DRAWING CONTAINS INFORMATION THAT IS PROPRIETARY TO MOLEX INCORPORATED AND SHOULD NOT BE USED WITHOUT WRITTEN PERMISSION | |

| NO. OF CIRCUITS 'XX' | DIM. 'A' | DIM. 'B' | ASSEMBLY MATERIAL NO. (-A-C OPTION) | ASSEMBLY MATERIAL NO. (-A-C-50 OPTION) |
|----------------------|---------------|-----------------|-------------------------------------|--|
| 02 | 24.5 [.97] | 11.11 [.438] | 387419802 | 387420002 |
| 03 | 35.7 [1.40] | 22.23 [.875] | 387419803 | 387420003 |
| 04 | 46.8 [1.84] | 33.34 [1.313] | 387419804 | 387420004 |
| 05 | 57.9 [2.28] | 44.45 [1.750] | 387419805 | 387420005 |
| 06 | 69.0 [2.72] | 55.56 [2.188] | 387419806 | 387420006 |
| 07 | 80.1 [3.15] | 66.68 [2.625] | 387419807 | 387420007 |
| 08 | 91.2 [3.59] | 77.79 [3.063] | 387419808 | 387420008 |
| 09 | 102.3 [4.03] | 88.90 [3.500] | 387419809 | 387420009 |
| 10 | 113.4 [4.47] | 100.01 [3.938] | 387419810 | 387420010 |
| 11 | 124.6 [4.90] | 111.13 [4.375] | 387419811 | 387420011 |
| 12 | 135.7 [5.34] | 122.24 [4.813] | 387419812 | 387420012 |
| 13 | 146.8 [5.78] | 133.35 [5.250] | 387419813 | 387420013 |
| 14 | 157.9 [6.22] | 144.46 [5.688] | 387419814 | 387420014 |
| 15 | 169.0 [6.65] | 155.58 [6.125] | 387419815 | 387420015 |
| 16 | 180.1 [7.09] | 166.69 [6.563] | 387419816 | 387420016 |
| 17 | 191.2 [7.53] | 177.80 [7.000] | 387419817 | 387420017 |
| 18 | 202.3 [7.97] | 188.91 [7.438] | 387419818 | 387420018 |
| 19 | 213.5 [8.40] | 200.03 [7.875] | 387419819 | 387420019 |
| 20 | 224.6 [8.84] | 211.14 [8.313] | 387419820 | 387420020 |
| 21 | 235.7 [9.28] | 222.25 [8.750] | 387419821 | 387420021 |
| 22 | 246.8 [9.72] | 233.36 [9.188] | 387419822 | 387420022 |
| 23 | 257.9 [10.15] | 244.48 [9.625] | 387419823 | 387420023 |
| 24 | 269.0 [10.59] | 255.59 [10.063] | 387419824 | 387420024 |
| 25 | 280.1 [11.03] | 266.70 [10.500] | 387419825 | 387420025 |
| 26 | 291.2 [11.47] | 277.81 [10.938] | 387419826 | 387420026 |
| 27 | 302.4 [11.90] | 288.93 [11.375] | 387419827 | 387420027 |
| 28 | 313.5 [12.34] | 300.04 [11.813] | 387419828 | 387420028 |
| 29 | 324.6 [12.78] | 311.15 [12.250] | 387419829 | 387420029 |
| 30 | 335.7 [13.22] | 322.26 [12.688] | 387419830 | 387420030 |

| | | | | | | |
|--|--------------------|--|--|--|--|--|
| INITIAL RELEASE EC NO: ETC2007-0073 DRW: EHILE 2006/09/28 CHKD: JMACNEIL 2006/09/28 APPR: JMACNEIL 2006/09/29 A | DESCRIPTION REV | QUALITY SYMBOLS ▽=0 ▽=0 | GENERAL TOLERANCES (UNLESS SPECIFIED) mm INCH 4 PLACES ± --- ± --- 3 PLACES ± --- ± .005 2 PLACES ± 0.13 ± .01 1 PLACE ± 0.3 ± --- ANGULAR ± 2 ° | DIMENSION STYLE MM/IN DRAWN BY DATE EHILE 2006/08/31 CHECKED BY DATE JMACNEIL 2006/08/31 APPROVED BY DATE JMACNEIL 2006/08/31 | SCALE 2:1 DESIGN UNITS INCH THIRD ANGLE PROJECTION | TITLE 11.11MM [.438] SR BTS LOW PROFILE ASSY, -A-C OPTION |
| | | DRAFT WHERE APPLICABLE MUST REMAIN WITHIN DIMENSIONS | MATERIAL NO. SEE CHART | DOCUMENT NO. SD-38741-003 | SHEET NO. 2 OF 2 | |
| | | SIZE B | THIS DRAWING CONTAINS INFORMATION THAT IS PROPRIETARY TO MOLEX INCORPORATED AND SHOULD NOT BE USED WITHOUT WRITTEN PERMISSION | | | |
| | | MOLEX INCORPORATED | | | | |